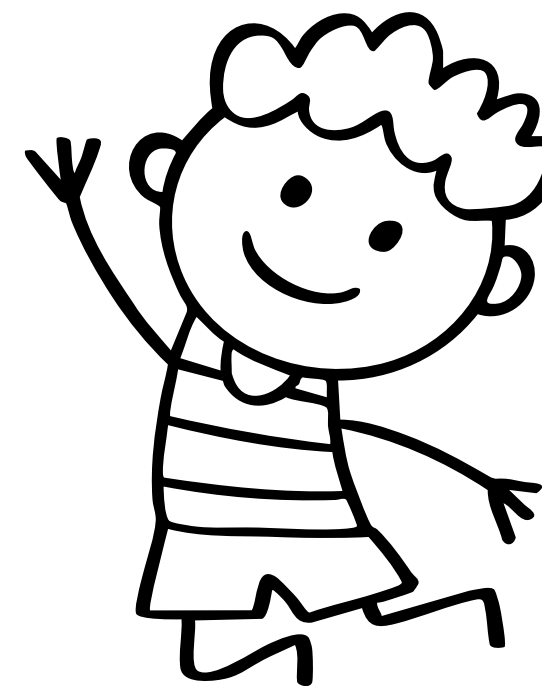


# LEADING LITTLES TO SUCCESS -

TIPS FOR IMPLEMENTING  
SUCCESSFUL TIER 2 STRATEGIES  
IN AN EARLY CHILDHOOD SETTING



PBIS SUMMER INSTITUTE 2026





# WHO WE ARE

## Dr. Herman Blau

- Principal at WLE
- Active with PBS for 5 years
- Administrative component of all PBS Tiers

## Mary Beth Knueven

- Special Education teacher at WLE
- Active with PBS for 10ish years
- Coach for Tier 2 & 3

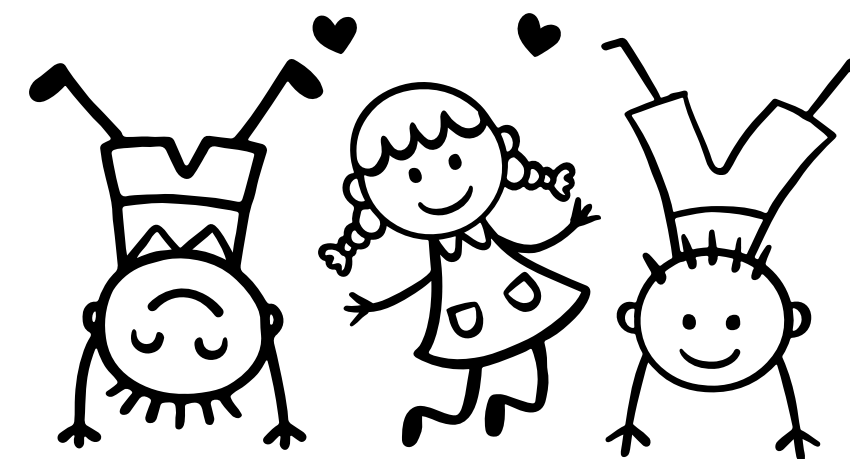




# WHERE WE ARE FROM

## William Lynch Elementary

- Located in Salem, MO
- Now serving PK-K
- Include the Dent County Developmental PK
- Received gold recognition since 2017
- Mary Richter recipients in 2022





# OUTCOMES FOR TODAY:

Participants will:

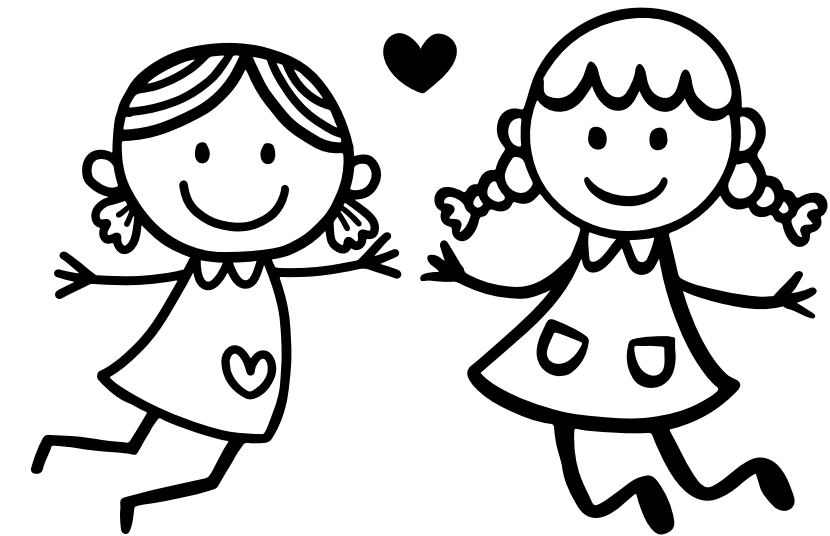
- become more familiar with CICO
- explore the many styles of CICO at WLE
- explore what happens when the pyramid gets flipped
- apply practical applications to take back to their school





# CICO BASICS

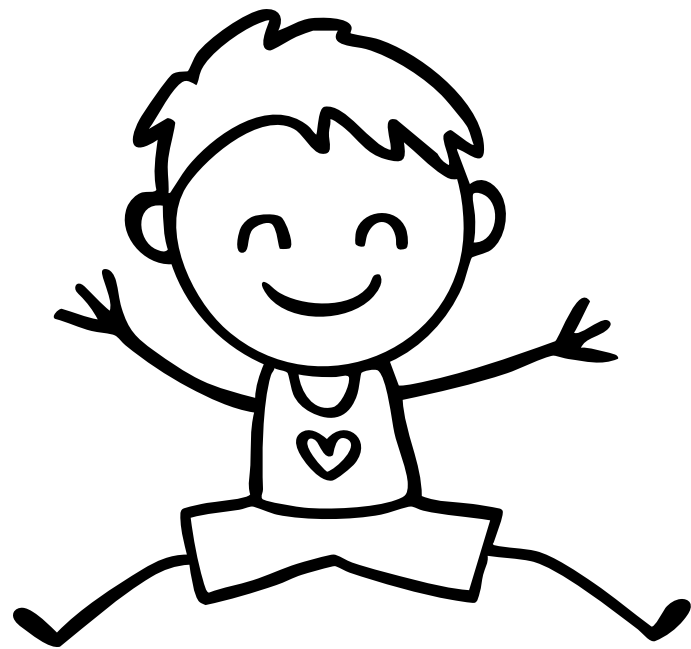
- Tier 2 strategy for students who are attention seeking
- Involves a Coordinator and facilitator
- Parents are always involved
- Reviewed every 2-4 weeks
- Rolls into self-monitoring as appropriate
- Graduation is always the goal !





# OUR PROCESS

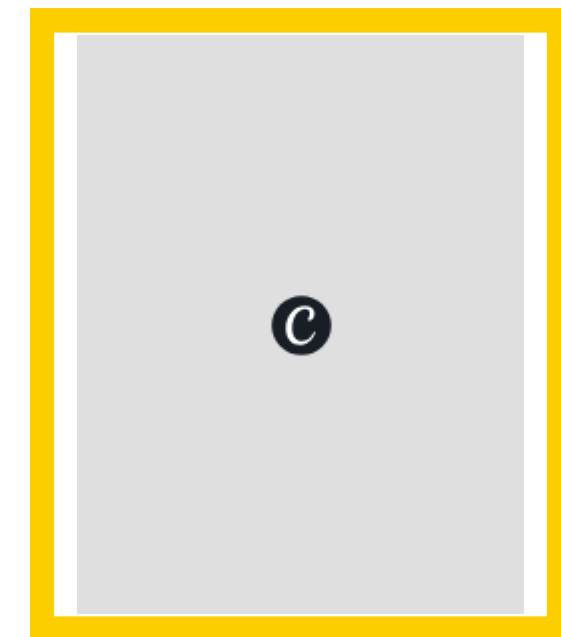
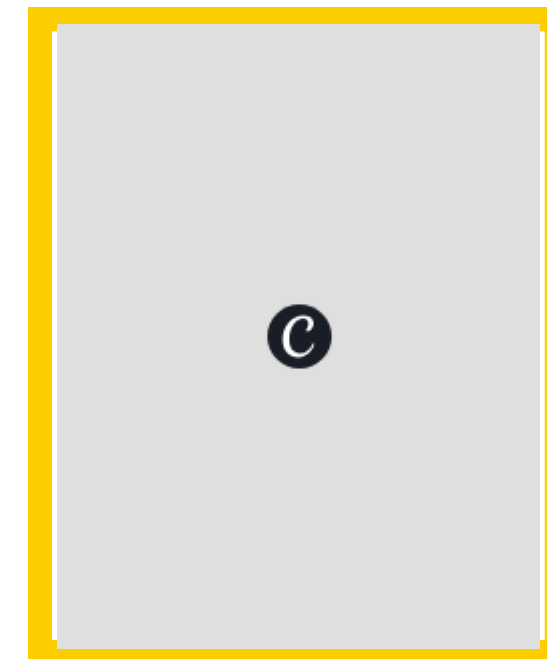
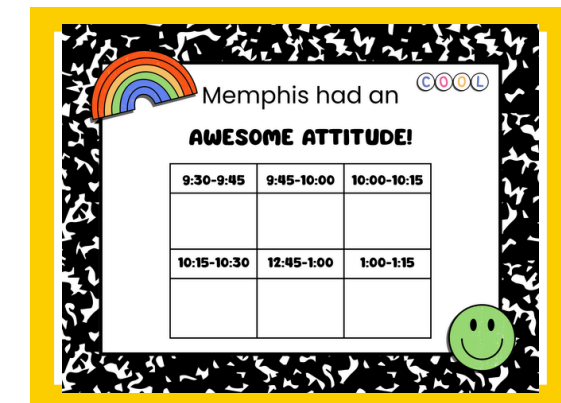
- First few weeks with students - observe, take notes
- Meet with the Tier 2 team
- Complete the Tier 2 Nomination Form (Drive)
- Take frequency data
- Tier 2 team meets - SMART goal and decision
- Meet with parents
- Begin implementation
- Review
- Graduate





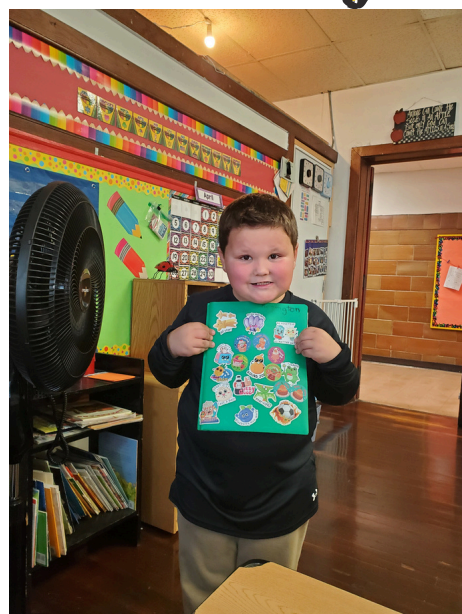
# OUR CICO STYLES

- Pages include time brackets
- Our best point system
- With and without visuals
- With and without comment boxes
- Signature spot
- Half sheet
- No frowns

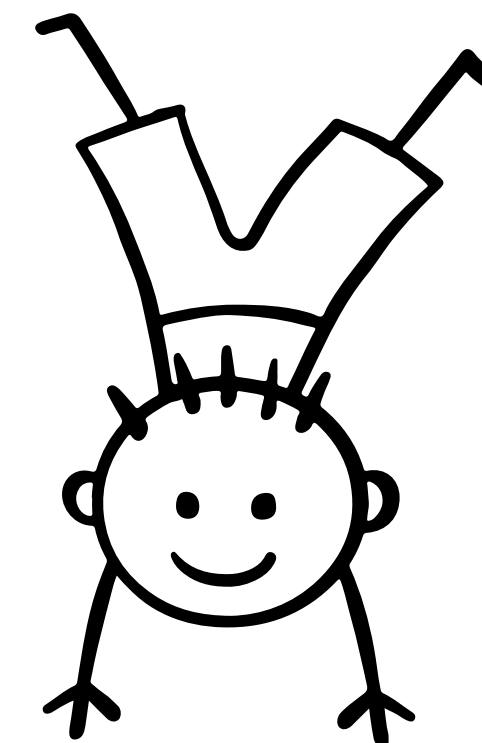




# WHY SO MANY OPTIONS

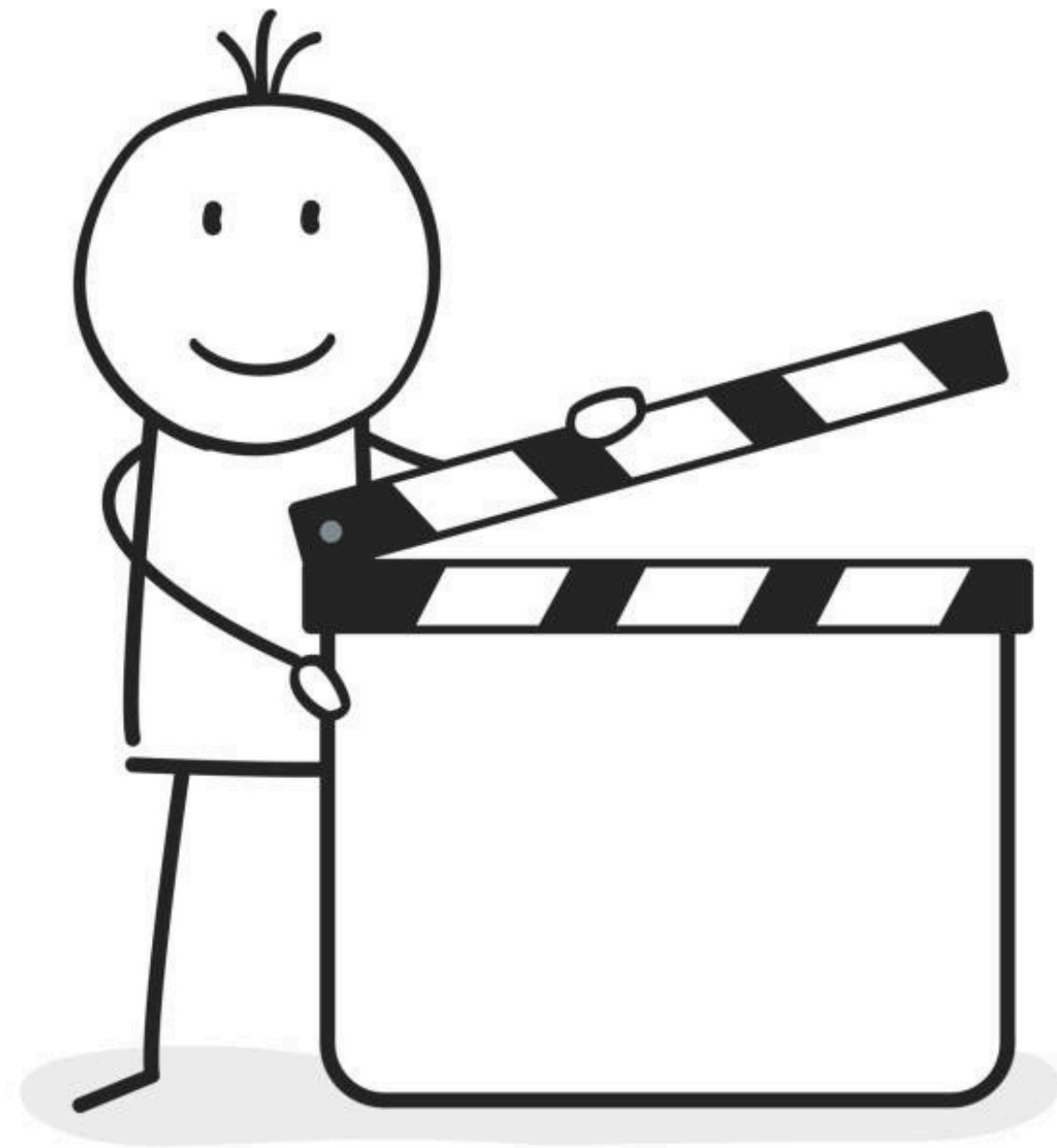


- Our population changed
- We got more training
- Parent responses
- Student responses
- Working with special needs students





HERE'S HOW IT GOES!

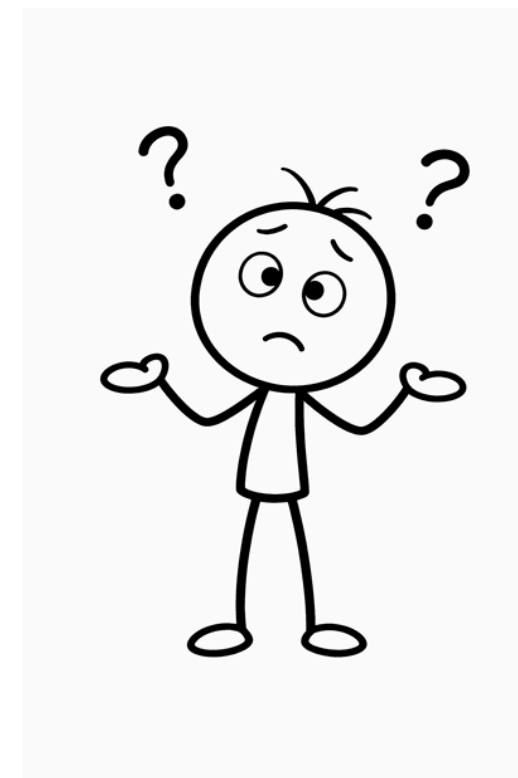
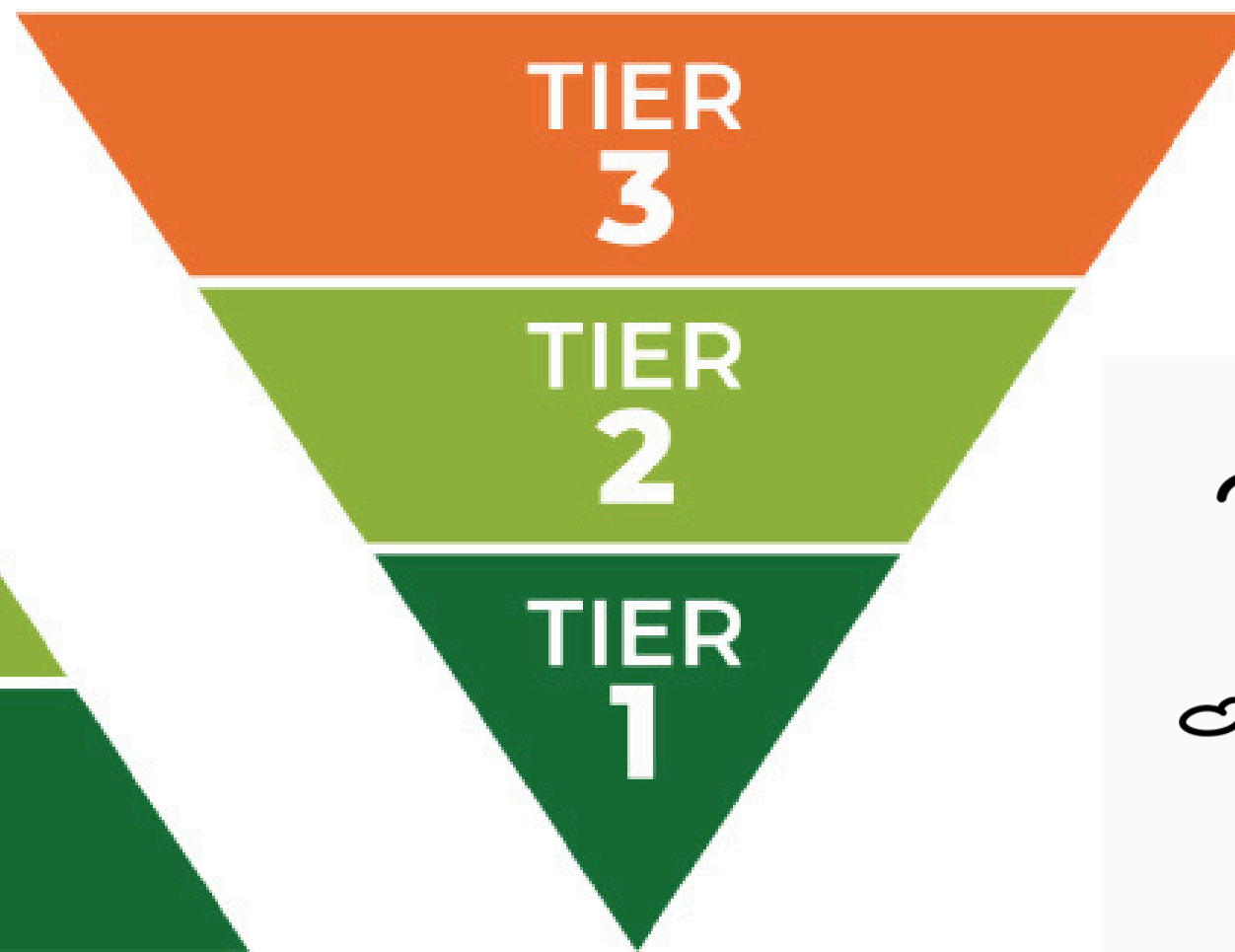
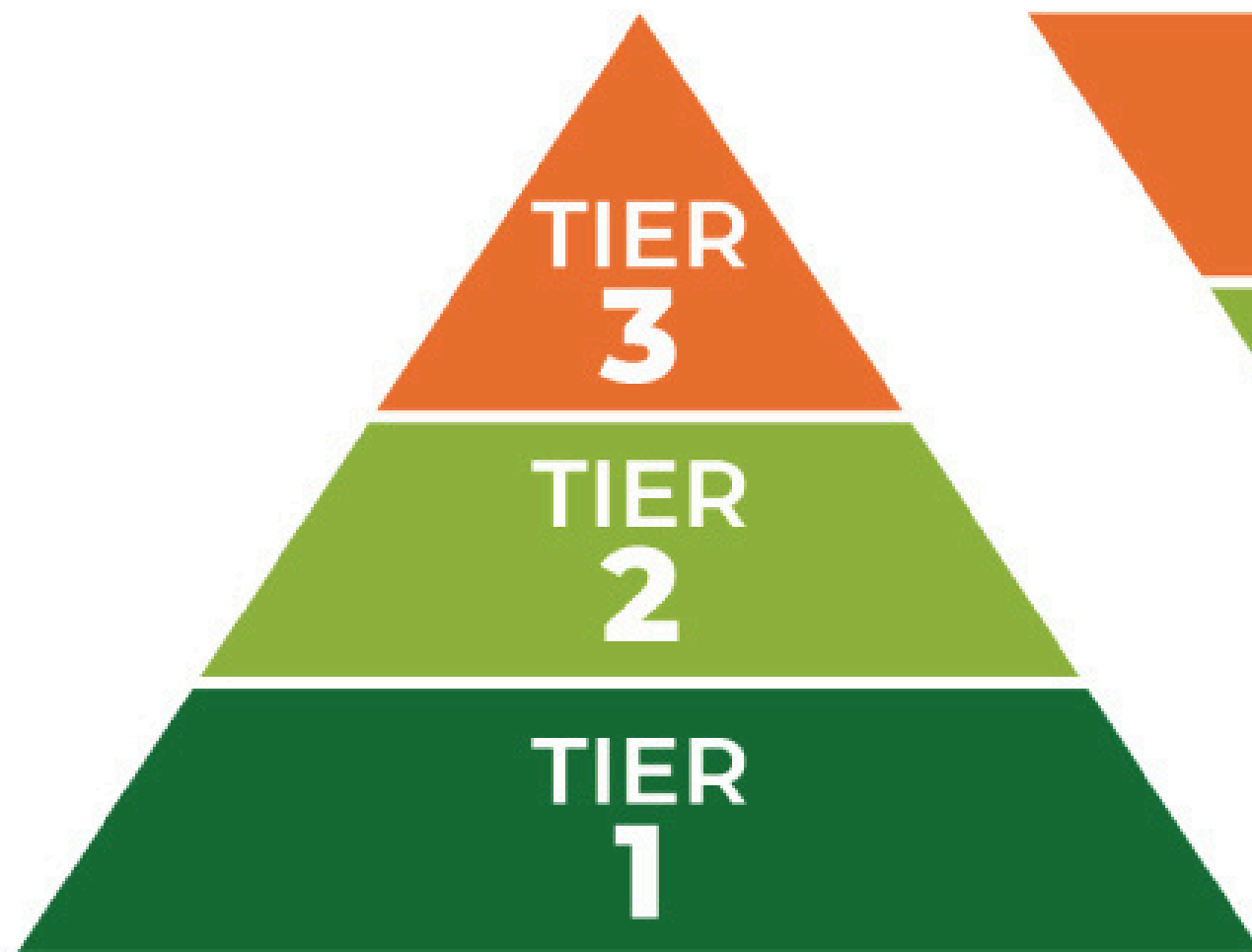


CICO with Amber

CICO with Knueven



# WHAT HAPPENED?!





# WELL.....



- Team discussion
- Difficult conversations
- Back to Tier 1
- Training, training, training
  - the teacher
  - the Tier 2 team
  - the whole staff



# Q&A

Share one thing that you will take back with you and use to improve your CIC0 process.





THANK YOU!

Where to reach us:

[herman.blau@salemr80.org](mailto:herman.blau@salemr80.org)

[marybeth.knueven@salemr80.org](mailto:marybeth.knueven@salemr80.org)

William Lynch Elementary (573)729-6611

