




**WE'RE HAPPY YOU**

**ARE HERE!**

**(ATTENDANCE INITIATIVES)**

**SESSION 4E**

**SOUTH ELEMENTARY SCHOOL  
KENNETT, MO**





## **OUTCOMES:**

- Learn practical, data-driven strategies to evaluate and promote student attendance
- Identify individual, classroom, and schoolwide initiatives to increase student attendance





# ABOUT US

## Dr. McMullan

South Elementary  
Principal --4 years

Former middle school  
assistant principal &  
high school chemistry  
teacher.

## Mrs. Nigut

South Elementary Counselor-  
23 years

K-12 Counselor-  
1 year

Special Education teacher-  
4 years





# **ABOUT OUR SCHOOL**

\*Rural community in SE Missouri

\*Grades 3-5

\*410 students

\*Title 1

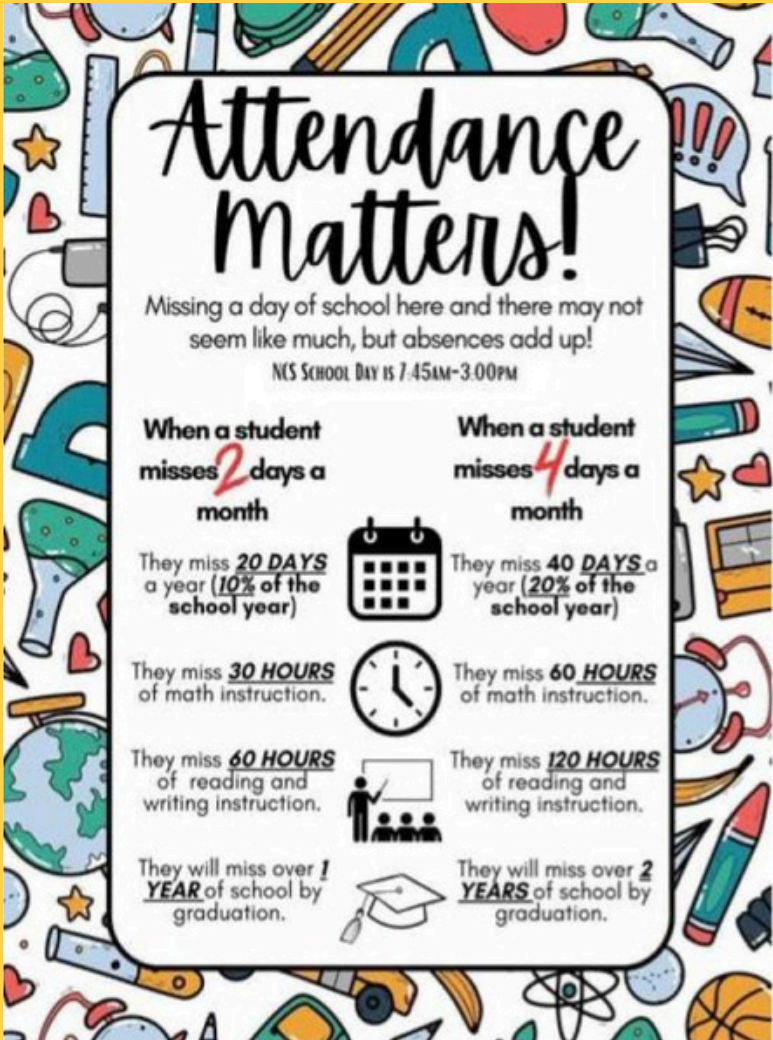
\*85.7% proportional attendance  
for 2023-24 (DESE)

\*6x Award of Excellence recipient





# WHY ATTENDANCE MATTERS



Chronic Absenteeism:  
\*21.8% of MO students were documented as chronically absent in the 2023-24 school year.

Drilled down data:  
\*16.7% of elementary & middle school students  
\*30.7% of students who qualify for Free & Reduced-Price Lunch (PRiME Center, March 2025)

1 or 2 days doesn't seem like much, but...			
If your child misses...	That equals...	Which is...	And over 13 years of schooling that's...
1 day every 2 weeks	20 days per year	4 weeks per year	Nearly 1 ½ years
1 day per week	40 days per year	8 weeks per year	Over 2 ½ years of school
2 days per week	80 days per year	16 weeks per year	Over 5 years
3 days per week	120 days per year	24 weeks per year	Nearly 8 years

How about 10 minutes late a day? Surely that won't affect my child?

He/she is only missing just...	That equals...	Which is...	And over 13 years of schooling that's...
10 minutes per day	50 minutes per week	Nearly 1 ½ weeks per year	Nearly ½ year
20 minutes per day	1 hr 40mins per week	Over 2 ½ weeks per year	Nearly 1 year
30 minutes per day	Half a day per week	4 weeks per year	Nearly 1 ½ years
1 hour per day	1 day per week	3 weeks per year	Over 2 ½ years

EVERY DAY COUNTS  
If you want your child to be successful at school, YES, attendance does matter!



# WHAT THE RESEARCH SAYS WE CAN DO...

- \*Use a data-driven approach to identify root causes and tailor interventions.
- \*Monitor student attendance data on a regular basis.  
(PRiME Center, March 2025)
- \*Implement multiple years of high-quality PBIS.  
(Center on PBIS, February 2025)





# OUR GOAL: 90% ATTENDANCE FOR ALL STUDENTS

\*District initiative/challenge to improve attendance through PLC process.

\*Tier 1 leadership team developed a plan to target attendance and incorporate student celebration.



Attendance Matters



Every Day Counts....





# **OUR PLAN...**

- \*CHANGED THE WAY WE GREET OUR STUDENTS**
- \*WEEKLY ATTENDANCE REPORTING BY GRADE LEVEL**
- \*CLASSROOM ATTENDANCE SIGNS**
- \*NEVER-BEEN-ABSENT (NBA) RECOGNITION**
- \*ATTENDANCE HERO GROUPS**
- \*ATTENDANCE BUDDIES**
- \*SURPRISE ATTENDANCE CELEBRATIONS**
- \*MAP TESTING ATTENDANCE INCENTIVES**
- \*ATTENDANCE LETTERS SENT WEEKLY**
- \*COLLABORATION WITH SSW**
- \*DISTRICT ATTENDANCE MEETINGS WITH PARENTS**





# SCHOOL ENTRANCE



**COLLABORATIVE PROJECT MADE BY ALL STUDENTS**



# UPDATED ADMISSION SLIPS



## WELCOME!

### *Happy YOU are HERE!*

STUDENT'S NAME \_\_\_\_\_ DATE \_\_\_\_\_

TEACHER'S NAME \_\_\_\_\_ ARRIVAL TIME \_\_\_\_\_

REASON FOR LATE ARRIVAL:

LUNCH CHOICE:

#1 \_\_\_\_\_ or BL \_\_\_\_\_

- \_\_\_\_\_ Overslept- You are going to learn so much today!
- \_\_\_\_\_ Running Late- That's Ok! We are so glad you are here!
- \_\_\_\_\_ Sick- So glad you feel better and came to school!
- \_\_\_\_\_ Dr. Appointment- EVERYONE will be so happy to see you!
- \_\_\_\_\_ Missed Bus- Today would have not been the same without you!
- \_\_\_\_\_ Other \_\_\_\_\_

You Matter!

Comments: \_\_\_\_\_

Person issuing admission slip: \_\_\_\_\_ Today is going to be great!

### ***Our School Family is not complete without you!***

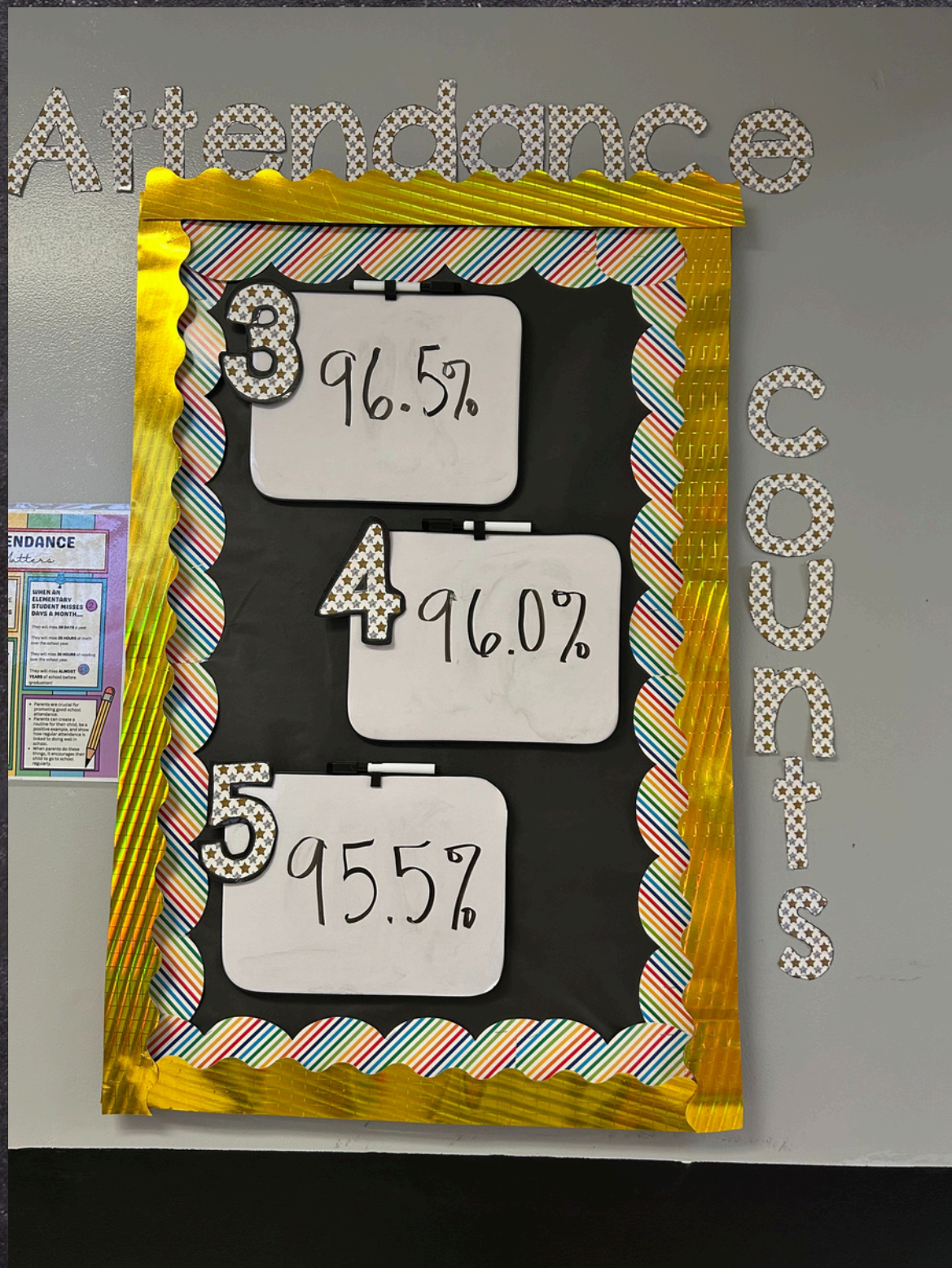
## Be Positive





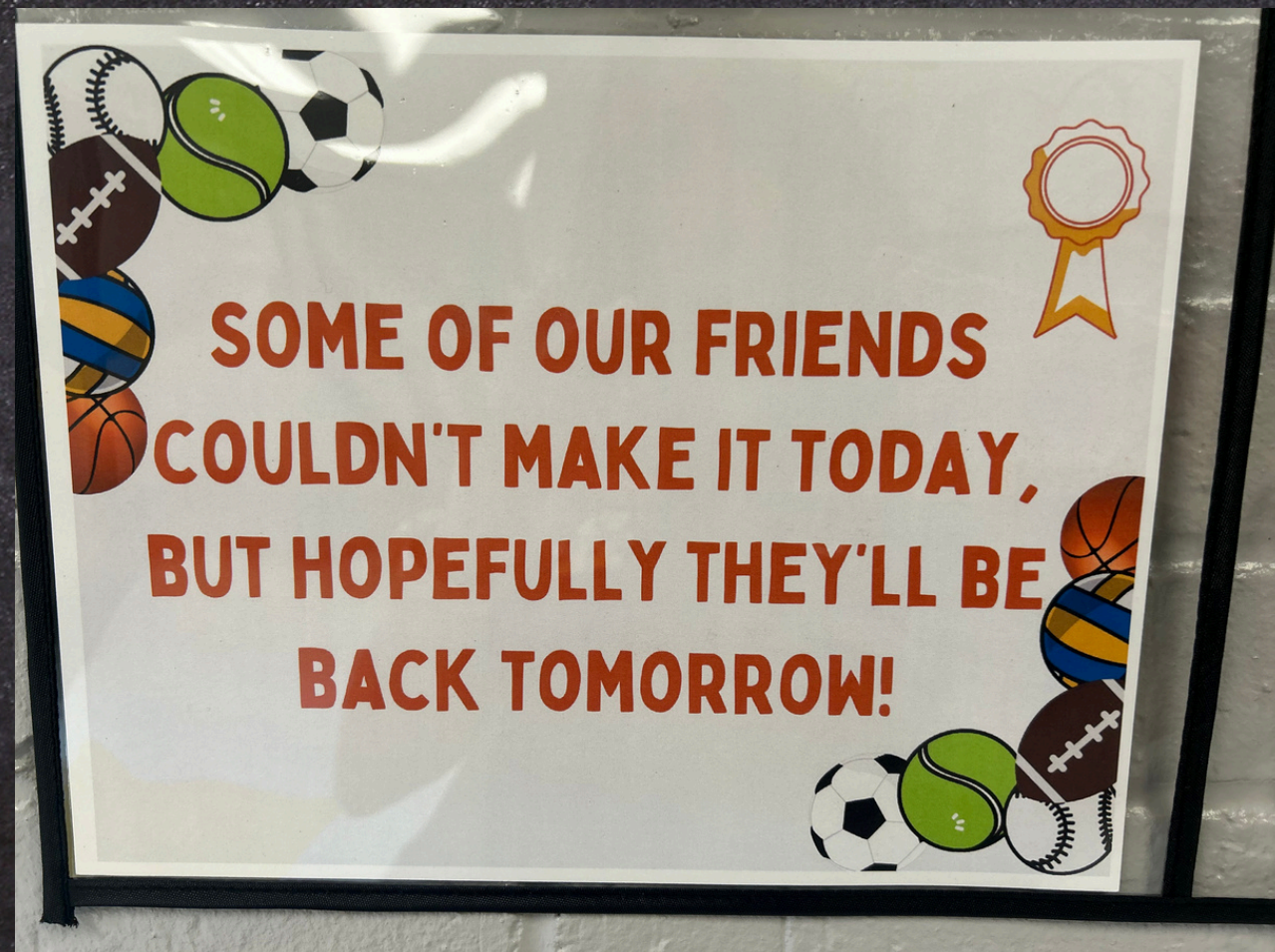
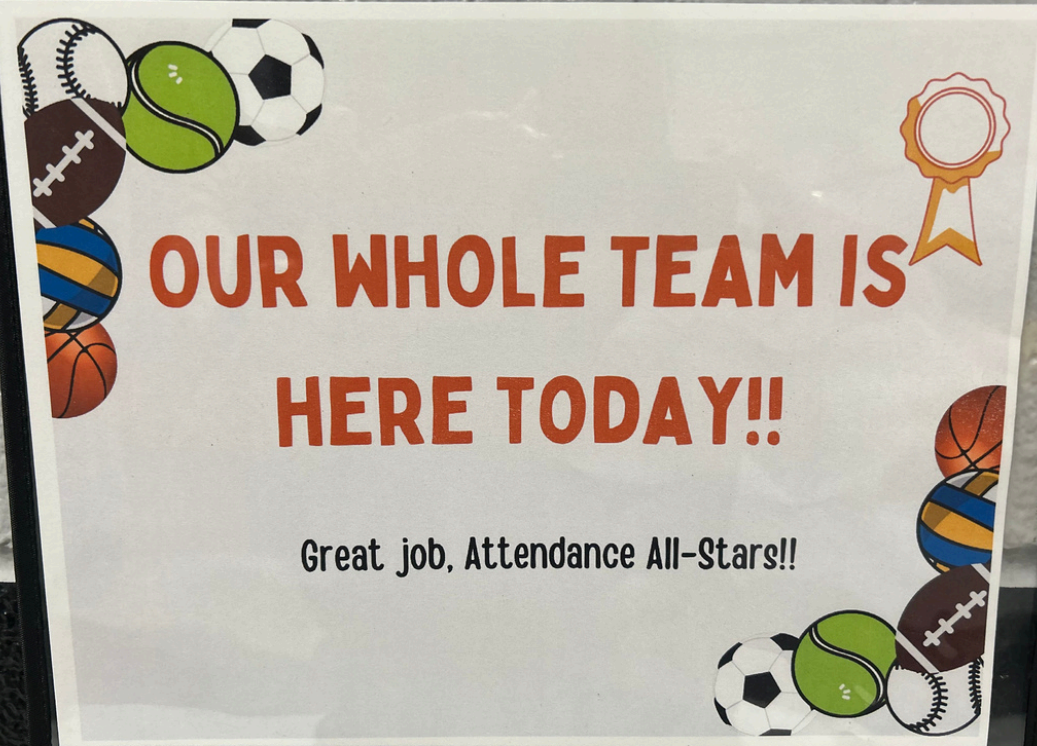
# WEEKLY ATTENDANCE REPORTING

Grade-level attendance is updated and reported each week. It's shared in the weekly staff newsletter and on the Monday morning school-wide announcements.





# CLASSROOM ATTENDANCE SIGNS



Each homeroom class “flips the sign” each morning. Students can be heard cheering when a student arrives to school allowing them to “flip the sign!”



School counselors identified students who have experienced high rates of school absences from the end of the year and through the mid-term of the first quarter. These students attended the “Attendance Hero Group” during breakfast once per week for six weeks.

Lessons targeted:

- \*Feelings about attendance,
- \*What helps or hurts attendance,
- \*Attendance routines
- \*Barriers to attendance

Each student had a folder and ended with a personalized attendance plan that was tailored to thier needs. This group fostered great conversations with the students.

# ATTENDANCE HERO GROUPS







# NEVER-BEEN-ABSENT (NBA) ALL STARS

Students who had zero absences (of any kind for a 4 week time period) were recognized during lunch as NBA all-stars. Three students from each grade-level won \$10 Wal-Mart cards.

A bulletin board outside the cafeteria contains stars with each NBA all-star student name.





# ATTENDANCE BUDDIES

Special area teachers were provided a list of students with less than 90% attendance. From this list, they identified “Attendance Buddies.”

The goal of the “Attendance Buddy” system was to ensure that students knew they were missed when they were absent from school.







# **SURPRISE ATTENDANCE CELEBRATIONS**



**Building admin randomly  
chooses a day and treats  
the class(es) with perfect  
attendance to a treat!**

**ENCOURAGES  
STUDENTS TO  
ATTEND--EVEN  
ON DAYS  
BEFORE  
HOLIDAYS!**



# MAP ATTENDANCE INCENTIVES

## South School "Going for Gold"

### MAP Attendance, Effort and Behavior Incentives March 31-April 25, 2025



- Thursdays- Wear your shirt each week! Drawings for various prizes will be held at lunch each Thursday.
- The classroom from EACH grade level with the best attendance (no tardies or early check-outs, too) and least amount or no write-ups (majors and minors) during MAP Testing and Prep will win an Olympic-themed cookie decorating party with Mrs. Rene, Mrs. Lack, and Miss Jady Beth.
- Other students who have no majors/minors, good attendance and put forth good effort during the MAP test and prep will be entered into raffle drawings for prizes throughout MAP testing.

**Important Dates for April** (Testing will begin promptly at 8:30 a.m. each day and last for a couple of hours, so students may test at alternate times.)

March 31-April 4: MAP Review/Prep and Spirit Week

4: MAP Assembly

7-11: Continued MAP Prep for 3rd and 4th

9-10: Science MAP test (5th grade)

14: MAP Prep for all grades

15-17: ELA MAP Test (all grades)

18: No School (Good Friday)

21: MAP Prep

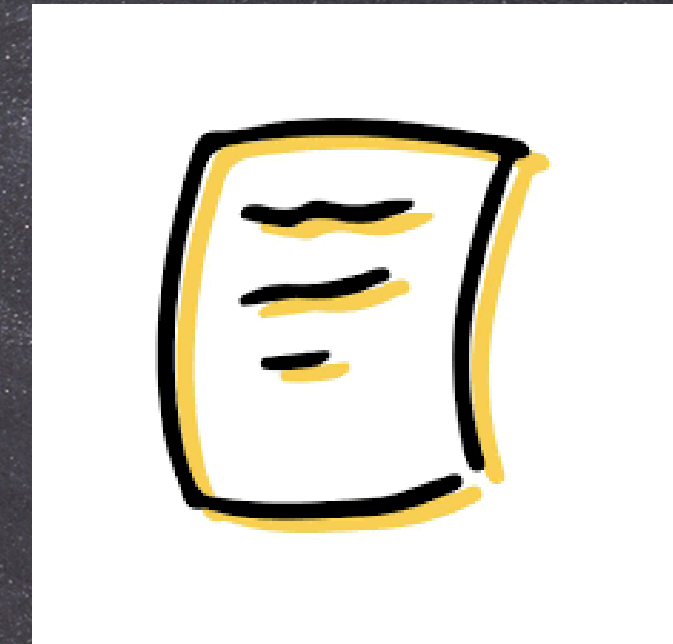
22-24: Math MAP Test (all grades)

28-May 2: Makeup week/Rewards

\* Please try to avoid Dr. Appointments and trips during these dates. If you know you will be gone in advance (for example, cheer competitions in Florida) please notify the school so we can make arrangements to test your child **PRIOR** to the student being gone. Thanks in advance for your cooperation.



**WEEKLY ATTENDANCE LETTERS  
GENERATED  
FROM OUR STUDENT INFORMATION  
SYSTEM (POWERSCHOOL)  
MAILED HOME EACH WEEK**



**\*ATTENDANCE LETTERS ARE SENT FOR 3, 5 AND 6 DAYS ABSENT**

**\*TARDY LETTERS ARE SENT FOR 3 AND 5 DAYS TARDY**

**(THESE LETTERS OFTEN GENERATE CALLS FROM PARENTS)**



# **COLLABORATION WITH SCHOOL SOCIAL WORKER AND EARLY INTERVENTION ATTENDANCE MEETINGS**

\*Each building recommended 8-10 students for attendance case management..

\*SSW made calls/home visits with each absence.

\*If attendance did not improve, SSW collaborated with building admin and counselors, to schedule the early intervention attendance meetings with students and parent/guardian.

\*Superintendent, building principal, counselors, SSW, Juvenile Office, and Children's Division were present at the attendance meetings.

\*Primary goal of the meetings was to provide support and remove barriers to poor attendance.





## DATA...

\*Of the 15 students in the attendance HERO group, 40% improved their attendance.

\*5 students had early intervention attendance meetings, and 4 of the 5 improved their attendance.

\*Building proportional attendance rate is 93.6% (as of March, 2025).





# 90%

As of April 15, 2025


93.6% of South students are at or above 90% attendance.

Compared to the 2023-24 school year with  
85.7% of students at or above 90% attendance.





## NEXT STEPS...

- \*Address sub-group attendance data
    - Proportional attendance for SPED students in 2023-24 was 73.2%
  - \*Implement 2<sup>nd</sup> semester HERO attendance group
  - \*Maintain initiatives in place.
- 



# QUESTIONS?

Find our resources  
here!







# **THANK YOU!**

**PLEASE COMPLETE THE  
FEEDBACK SURVEY IN THE  
GUIDEBOOK APP**

**MMCMULLAN@KENNETT.K12.MO.US**

**JNIGUT@KENNETT.K12.MO.US**