



The background is a solid light blue color with a repeating pattern of white line-art icons. These icons represent various educational fields: science (microscope, test tube, beaker, globe), art (paint palette, pencil, brush), technology (laptop, tablet), and general education (backpack, book, graduation cap, apple, ruler, compass, pencil sharpener).

Let's Rock
Working Together To Build A Culture
Of Belonging

Your Are Important

- **Rock Your Role**
- **Your Why?**
- **PBIS Framework**



**Your Are Important...
Rock Your Role**

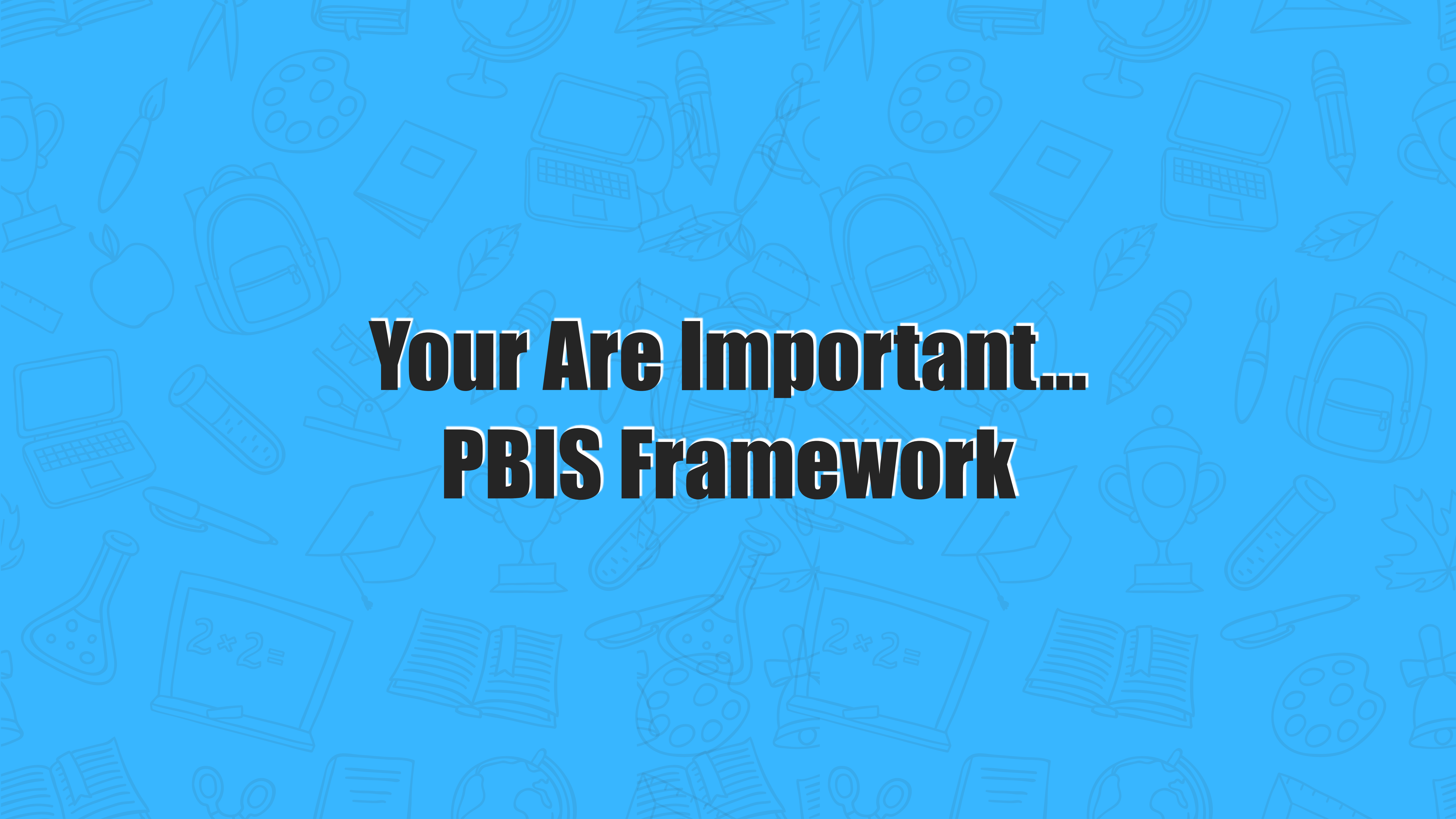


I was talking with Shay a couple of days ago,

**Your Are Important...
Your Why?**



gatewaypeople.com

The background is a solid light blue color with a repeating pattern of white line-art icons. These icons represent various educational fields: science (microscope, test tube, beaker, globe), art (paint palette, pencil, brush), technology (laptop, tablet), and general education (backpack, book, ruler, compass, apple, leaf, graduation cap, trophy, math equation).

Your Are Important... PBIS Framework

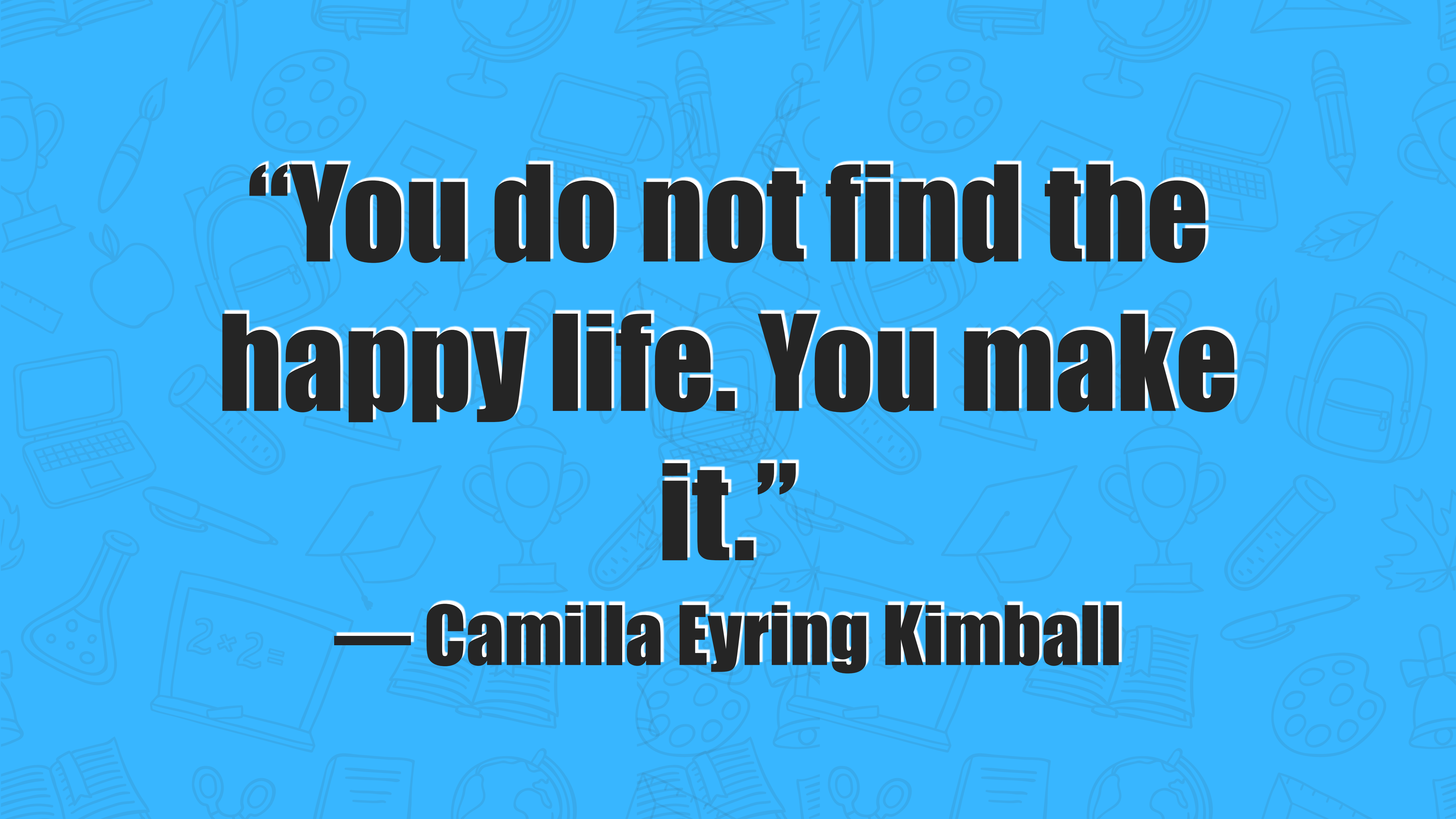


Introducing...
Rodney Lewis, Ed.D.



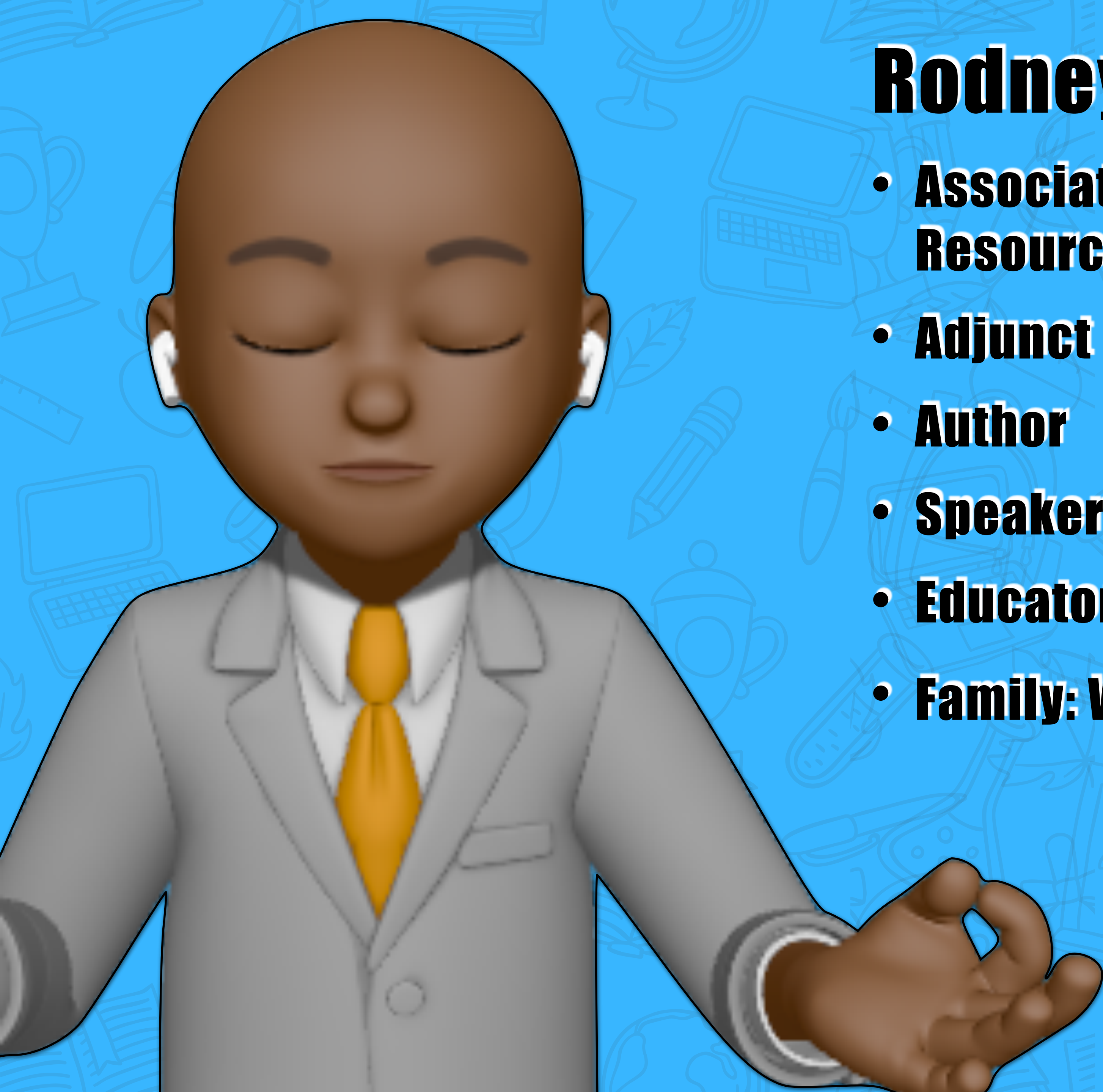
THE GREAT OASIS

Rodney Lewis, Ed.D.,
SHRM-CP

The background is a solid light blue color with a repeating pattern of white line-art icons representing various educational fields: science (microscope, beaker, test tube, globe), art (paint palette, pencil, brush), technology (laptop, tablet), and general education (book, graduation cap, trophy, ruler, compass).

**“You do not find the
happy life. You make
it.”**

— Camilla Eyring Kimball



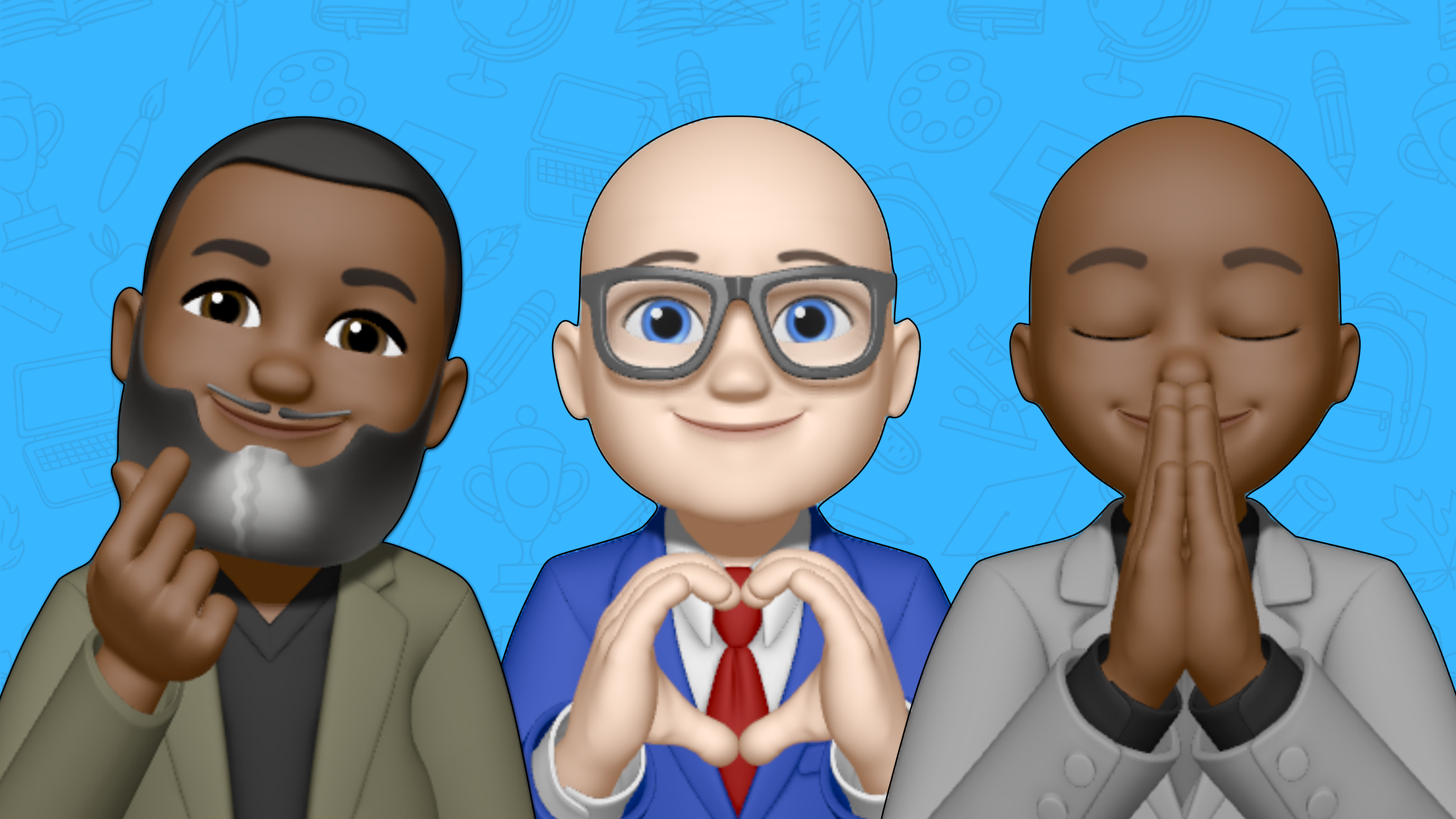
Rodney Lewis, ED.D, SHRM-CP

- **Associate Superintendent of Human Resources**
- **Adjunct Professor**
- **Author**
- **Speaker**
- **Educator**
- **Family: Wife and Daughter**











BATTLES

Battles

- **Politics**
- **Standardized Testing**
- **Educators**

Most Important To Teachers

- **Location**
- **School Culture**
- **School Leadership**



THE BLUEPRINT

Think...

- **Who Am I Beyond My Current Roles?**
- **Which Beliefs and Thoughts No Longer Serve Me?**
- **What Does My Future Self Need From Me To Achieve Happiness?**

The background is a solid light blue color with a repeating pattern of white line-art icons. These icons represent various educational fields: science (microscope, test tube, beaker, globe), art (paint palette, pencil, brush), technology (laptop, tablet), and general education (backpack, book, graduation cap, ruler, compass).

Focus
Guarantees
Leadership
Accountability
Simplicity



FOCUS

INKY JOHNSON



Focus

- **Focus On What Is Important**
- **Focus On What You Can Control**
- **What Are Your Goals?**



GUARANTEES



Guarantees

- **Don't Give Others Your Power**
- **Take Care Of Yourself**
- **What Can You Promise You?**



LEADERSHIP



Leadership

- **Courage: The Hard And Necessary**
- **Self-Discipline: Lead “You” First**
- **Who Are You Leading?**



ACCOUNTABILITY

Accountability

- **Your Feelings = Your Responsibility**
- **Control Your Actions**
- **Have You Taken Responsibility For Your Life?**



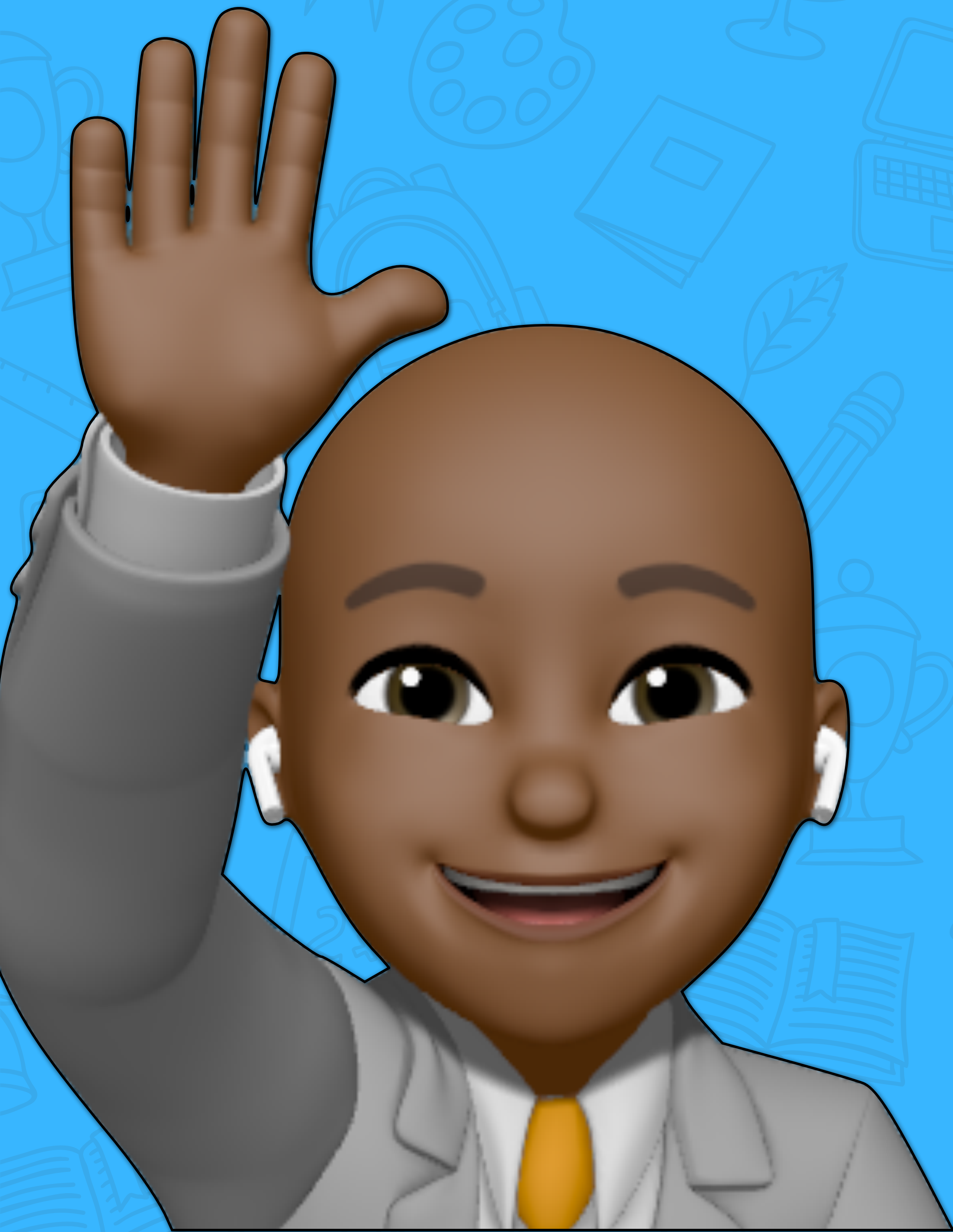
SIMPLICITY

Simplicity

- **Do The Simple Things Right**
- **Protect Your Peace**
- **What Can You Simplify?**

The background is a solid light blue color with a repeating pattern of white line-art icons. These icons represent various educational fields: science (microscope, test tube, beaker, globe), mathematics (ruler, compass, calculator), art (paint palette, pencil, brush), and general education (backpack, laptop, book, graduation cap, apple).

“The Great Oasis”



Phone/Text: 636.485.8213
Email: rlewis@stcharlessd.org
LinkedIn: Rodney Lewis

**“As long as you have breath in
your body, you have success in
your body.”**



I H A N K

Y O U !

