



Districtwide Capacity-Building Through Strategic Evaluation, Training, and Coaching

Danielle Starkey

MTSS-B Supervisor

Omaha Public Schools

Every student. Every day. Prepared for success.

Session Outcomes

By the end of this session, you will...

- Grasp essential components for district-level implementation and sustainability.
- Learn practical strategies for employing evaluation tools, tailored training, and targeted technical assistance to ensure fidelity and consistency in practices.

Session Expectations & Attention Signal



- **Responsible**
 - Engage in session activities
 - Silence cell phones, reply appropriately
- **Respectful**
 - Be an active listener, open to new ideas
 - Respond promptly to attention signal

Omaha Public Schools



87 total schools

8 additional programs



65 elementary schools



12 middle schools



9 high schools



1 K-12 virtual school



4 new schools

opened in fall of 2022



1 new school

opening fall of 2023



51,776 students

Nearly one in six students in Nebraska attends Omaha Public Schools

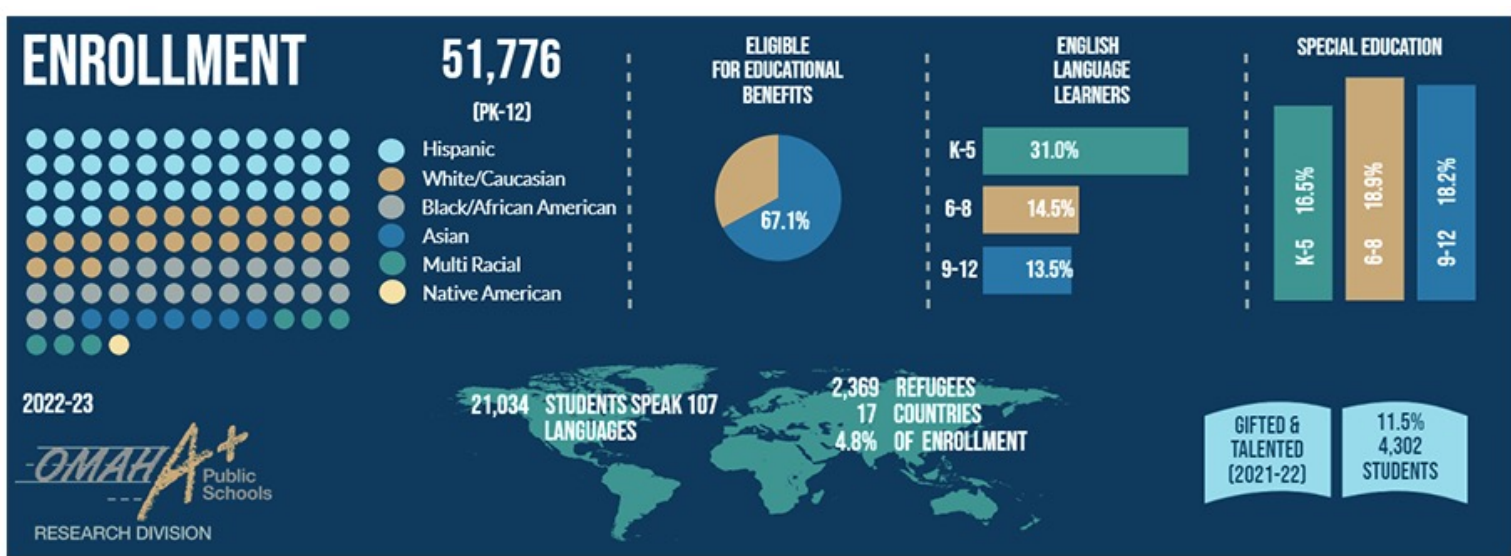


107 languages

spoken by students and families

Every student. Every day. Prepared for success.

Student Demographics

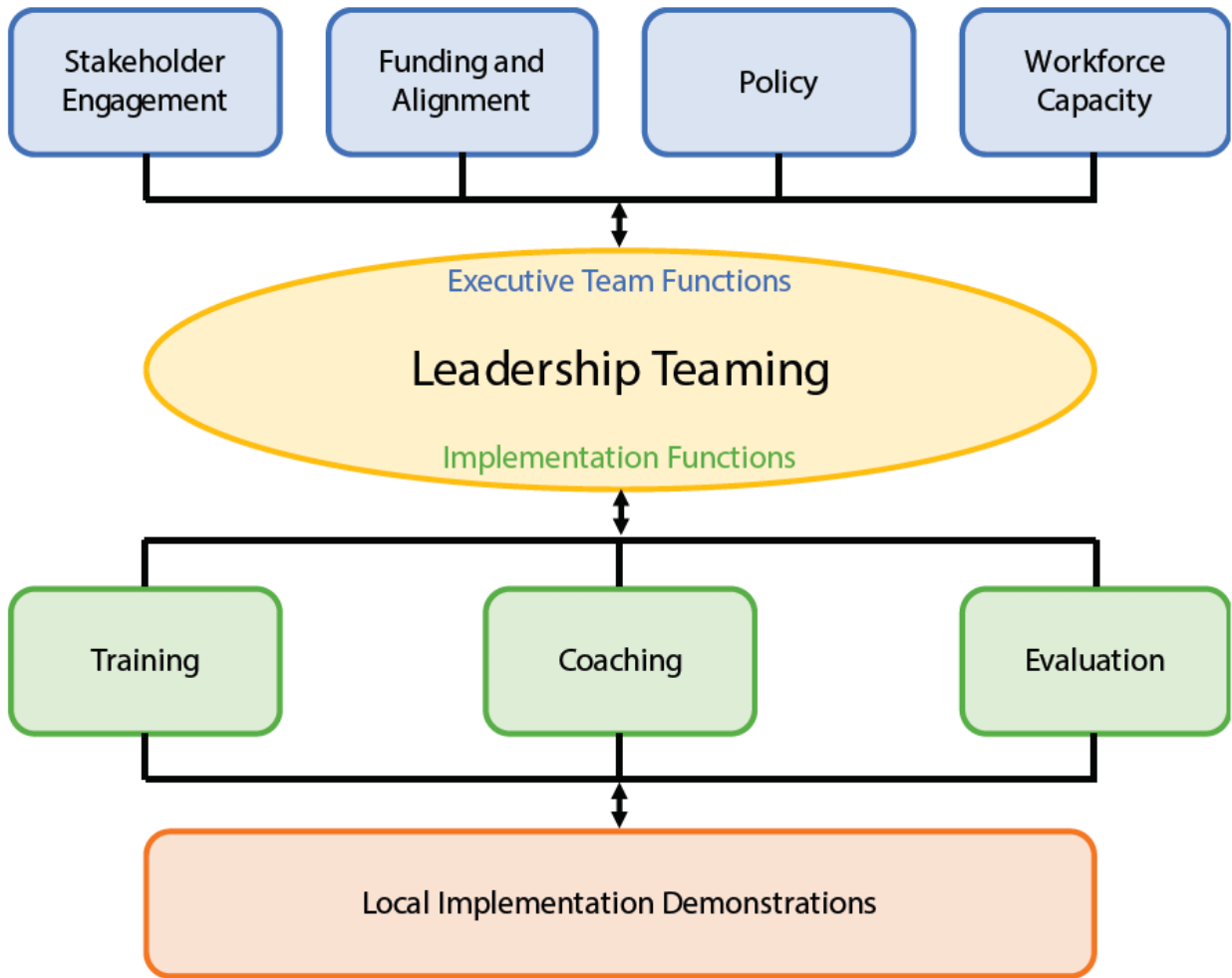


Every student. Every day. Prepared for success.

MTSS-B Implementation in the Omaha Public Schools

- Phased approach beginning in 2015-2016
- All schools/programs implement Tier 1
- All schools/programs working towards Tier 2 and 3 implementation

- MTSS-B implementation is included in our OPS Strategic Plan of Action.



District Systems Fidelity Inventory (DSFI)

1. Leadership Teaming
2. Stakeholder Engagement
3. Funding and Alignment
4. Policy
5. Workforce Capacity
6. **Training**
7. **Coaching**
8. **Evaluation**
9. Local Implementation Demonstration



TRAINING

Every student. Every day. Prepared for success.

MTSS-B Team Training

Past

- Full day trainings with teams at Central Office.
- Half day in-person coach trainings.
- Summer trainings for teams.

Present

- Asynchronous materials available online.
- Virtual coach meetings.
- MTSS-B & SEL Summer Summit

SharePoint & Upcoming Canvas



Microsoft 365 Search this site

OPS MTSS-B Home Documents Edit

+ New Page details Analytics

Tiered MTSS-B Support for Student Success

TIER 3:
1-5% of the student body

TIER 2:
5-10% of the student body

TIER 1:
80-90% of the student body

TIER 1: Universal Interventions
Universal Interventions for all students and all settings. It is preventive and proactive.

Published 2/15/2024 Share Edit

Documents See all

+ New All Documents

Name	Modified
1. MTSS-B Overview Materials	July 21
2. Tier 1 Training, Forms, & Examp...	July 21
3. Effective Classroom Practices (E...	July 21
4. Tier 2 Training, Forms, & Examp...	July 21
5. Tier 3 Training, Forms, & Examp...	July 21
6. Big 5 Data & Solution Plans	July 21
7. TFI & SAS - PBISAssessments	July 21
8. Extra Pay, Budget & Printing Inf...	July 21
9. MTSS-B Coach Meetings	July 21
Archived Newsletters	July 21

Every student. Every day. Prepared for success.

Training for All Staff

Preventing & Responding Challenging Behavior in the Classroom



Professional Learning Day

Preventing & Responding to Challenging Behavior in the Classroom

Asynchronous Session: Get Started by Visiting the Modules Tab

Professional Learning Day Preventing & Responding to Challenging Behavior in the Classroom	⋮
Presentation	
Video - Preventing and Responding to Challenging Behavior in the Classroom	
Slides Handout - Preventing Responding to Challenging Behavior.pdf	⋮
Resources	
Learning Framework - Effective Classroom Management Practices.pdf	⋮
Lists of Classroom Procedures.pdf	⋮
Practice Writing Classroom Procedures.pdf	⋮
Examples and Development of Specific Positive Feedback.pdf	⋮
Practice Selecting Techniques to Effectively Address Inappropriate Behavior.pdf	⋮
Active Supervision Components.pdf	⋮

Every student. Every day. Prepared for success.

MTSS-B & SEL Summit

**Integrating MTSS-B & SEL
for Student Success**

Creating a Culture for Learning

**Monday, July 31, 2023
8:00 – 4:00 pm
CHI Health Center**

MTSS-B & SEL for Student Success
Academics | Attendance | Behavior | Social Emotional Learning
Culture for Learning

Every student. Every day. Prepared for success.

Conference Agenda

**Integrating MTSS-B & SEL for Student Success Summit
July 31, 2023 | CHI Health Center**

7:30 - 8:00 a.m.	Registration	
8:00 - 8:10 a.m.	Welcome	Lisa Utterback Chief Officer, Student and Community Services Matthew Ray Interim Superintendent
8:10 - 8:15 a.m.	Welcome Inclusion Activity & Summit Procedures	
8:15 - 9:00 a.m.	Keynote	Dr. Tim Lewis Co-Director, OSEP Center for PBIS Director, MU Center for School-wide PBS
9:00 - 9:20 a.m.	Setting the Stage	Josie McDonnell Social Emotional Learning Supervisor Danielle Starkey Multi-Tiered Systems of Support for Behavior Supervisor
9:30 - 10:30 a.m.	Breakout Session 1	
10:40 - 11:40 a.m.	Breakout Session 2	
11:40 - 12:30 p.m.	Lunch & Team Time	
12:30 - 1:30 p.m.	Breakout Session 3	
1:40 - 2:40 p.m.	Breakout Session 4	
2:40 - 3:00 p.m.	SEL Break: Nourish & Connect	
3:00 - 4:00 p.m.	Optimistic Closure: Integrating MTSS-B & SEL for Student Success	Josie McDonnell Social Emotional Learning Supervisor Danielle Starkey Multi-Tiered Systems of Support for Behavior Supervisor

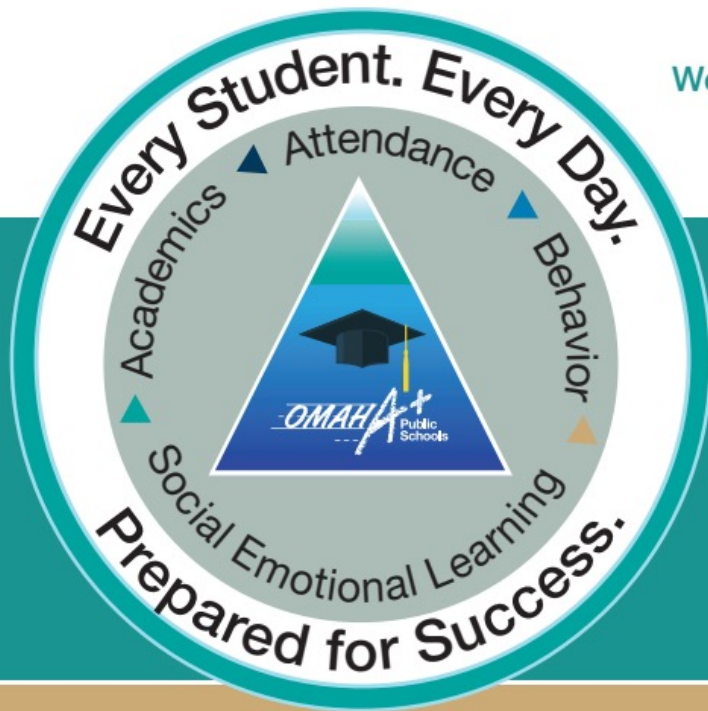
SAVE THE DATE

*Every Student. Every Day. Prepared for Success:
Advancing MTSS-B & SEL Implementation to Support All Students*



This summit will bring together educators across the Omaha Public Schools to share best practices and learn about evidence-based strategies for implementing equitable MTSS-B and SEL systems.

Tuesday, July 23, 2024 – Elementary Schools
Wednesday, July 24, 2024 – Secondary Schools & Programs
8:00 a.m. - 4:00 p.m. (with registration beginning at 7:30 a.m.)
UNO Scott Conference Center & Mammel Hall



Your expertise matters!
Please submit a brief proposal
for a breakout session below.

If you have any questions,
please reach out to
Danielle Starkey or
Josie McDonnell via email.



Other Training Opportunities

- Principal Meetings
- Positive Action Facilitator Trainings
- Elementary Instructional Leaders Network
- Secondary Instructional Leaders Network
- School Support Liaisons
- Data Retreats
- School Improvement Plan Meetings

COACHING

Every student. Every day. Prepared for success.

MTSS-B Coach Responsibilities

Goal: Support the district initiative to implement MTSS-B with fidelity.

- Participate in trainings provided (in person and virtual).
- Model support for the district initiative.
- Communicate frequently with team members.
- Connect teachers to appropriate supports.
- Share information from the Building Coach meetings.
- Receive and disseminate information from district coaches.
- Provide/arrange brief PD at staff meetings as applicable.

MTSS-B Building Coach Meetings 2023 – 2024



All meetings will be held virtually. Building Coaches can choose to attend 9:00am – 10:00am or 1:00pm – 2:00pm sessions.

Tier 1 Coach Meetings:

September 19th
October 2nd
November 27th
February 21st
March 18th

Tier 3 Coach Meetings:

September 26th
October 30th
November 29th
February 28th
March 26th

Tier 2 Coach Meetings:

September 20th
October 3rd
November 28th
February 27th
March 25th

Every student. Every day. Prepared for success.

Additional Coaching Supports

- MTSS-B Supervisor
- SEL Supervisor
- Teaching and Learning Consultants
- School Psychologists

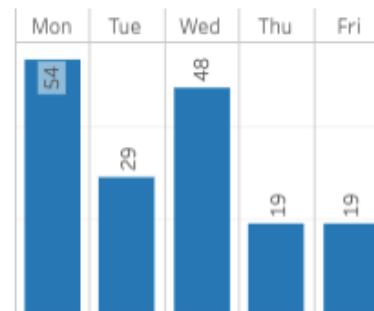
EVALUATION

Every student. Every day. Prepared for success.

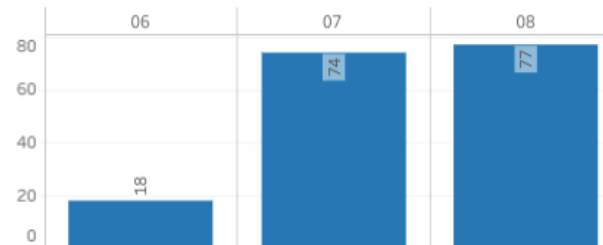
Behavior Dashboard (Tableau)

- Events by...
 - Day of the Week
 - Time of the Day
 - Grade Level
 - Location
 - Problem Behavior
 - Possible Motivation
 - Staff
 - Students

Events by Day of Week



Events by Grade



Monthly Team Reviews



MTSS-B

Multi-Tiered Systems of Support for Behavior



Big 5 Data Analysis & Solution Planning

Please use this document to collaborate as a team. You may type directly into the spaces provided or print this document for convenience.

Identify Outcomes: What is the overall outcome that your school is seeking?	
--	--

Identify Current Status: The Big 5 Report				
What were the average number of ODR's per day per month?	What is the most frequently reported problem behavior?	Where are the most problem behaviors occurring?	When are the most problem behaviors occurring?	Who are most frequently engaged in problem behavior?

Analyze: Select an area for intensive analysis.	
Consider the antecedents for the behavior, as well as <i>when</i> , <i>where</i> , <i>why</i> and <i>who</i> . Record your notes to the right as your team discusses the data.	
Based on your analysis, write a precision statement. <i>The focus for the month of (month) was (behavior) in the (location) at (time) and performed by (students).</i>	

MTSS-B

Multi-Tiered Systems of Support for Behavior



Solution Planning: Collaborate to develop an action plan that includes *prevention, teaching, recognition, and corrective consequences*. For each stage, identify the action step components. Once the plan is complete, determine a progression monitoring methodology.

What action steps will we take?	PREVENT: What can we do to <i>prevent</i> this behavior?	<ul style="list-style-type: none">
	TEACH: How will we teach or reteach expected behaviors?	<ul style="list-style-type: none">
	RECOGNIZE: How will we use specific positive feedback to reinforce expected behaviors?	<ul style="list-style-type: none">
	CORRECT: What strategies will we use to discourage inappropriate behavior?	<ul style="list-style-type: none">

Every student. Every day. Prepared for success.

DSFI: Differentiated Supports

- Data system is in place for identifying school teams in need of additional training and coaching support.

Process for Tiering Schools

- Review of available, related data.
 - Tiered Fidelity Inventory (TFI)
 - Self-Assessment Survey (SAS)
 - Behavior Events
 - Suspensions

Tier 1 Universal Supports

- 5 Tier 1 Building Coach Meetings
- 5 Tier 2 Building Coach Meetings
- MTSS-B SharePoint Training & Resource Library
- Tiered Fidelity Inventory Walkthrough
- MTSS-B Supervisor / Lead Teacher Attendance at One MTSS-B Meeting
- Technical Assistance Requests (as needed)
- “Office Hours” on Staff Workdays
- Monthly MTSS-B Building Coach Newsletter Emails
- Semester Data & Solution Plan Review

Tier 2 Targeted Supports

- Increased Number of Coaching Visits
- Classroom Observations with data review debrief
- Building Administration Collaboration (1/semester)

Tier 3 Intensive Supports

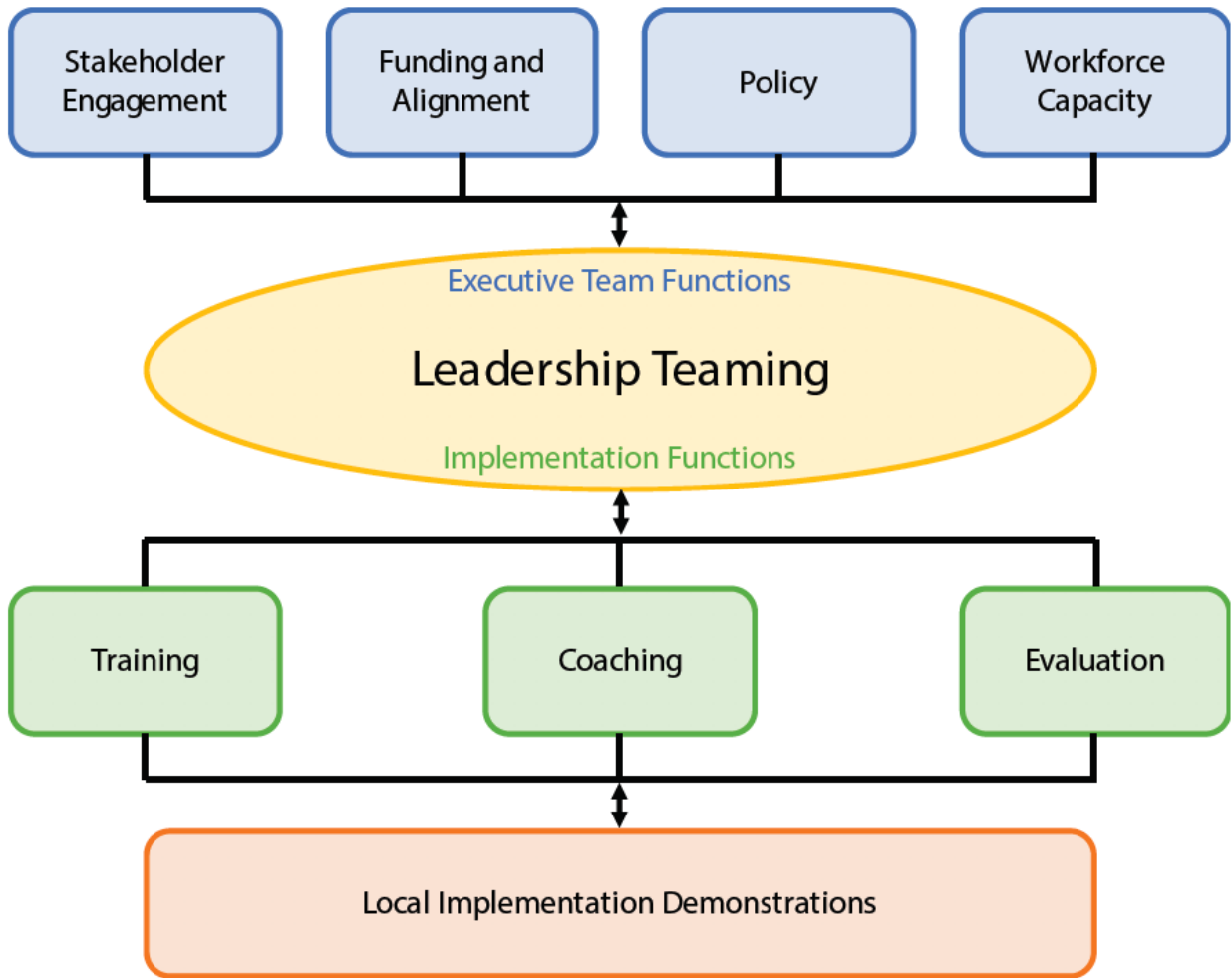
- MTSS-B Supervisor/Teacher Leader Support with Tiered Fidelity Inventory Completion
- Faculty Professional Development Presentations
- Collaboration with MTSS-B Building Coach to Plan Meeting Agendas and Action Plan Items
- Increase number of site visits
- Repeated classroom observations with data review debrief

Strategic Plan of Action

Monitoring

- Every school/program will reduce behavior events by 3% annually.
- Quarterly cross department collaboration with data reviews.





Thank you! Questions?

Danielle Starkey
danielle.starkey@ops.org



Every student. Every day. Prepared for success.