

“We Are Family”

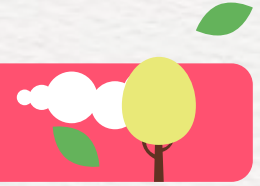
Presented by: Amber Martin, Counselor
Robin Hammons, Behavior Interventionist



Outcomes:

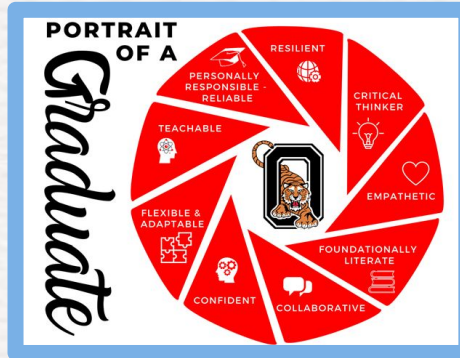
- ★ Learn how to use SW-PBS to create community across grade levels in a K-4 elementary school.
- ★ Identify methods to teach social-emotional learning topics in a fun, engaging way across multiple grade levels.
- ★ Hear options for using the SW-PBS team to support the Portrait of a Graduate initiative in an elementary school.

North Elementary Journey



Morning Meetings

Establish Classroom Community, Trust, and Meaningful Connections



Portrait of a Graduate

Traits of a Successful Ozark Graduate



Zones of Regulation

Self-Regulation Tool & Curriculum

What is a **O.N.E.** Family Meeting?

A chance for all students at North to be part of a smaller community of students and teachers who come together as a family to learn, celebrate, and connect.



Fun Facts About Families

- We start with our families when we enter Kindergarten or when we move in to North.
- We stay in the same family throughout our whole North Elementary Years.
- This is the 4th year we have been doing families at North.
- Everyone in the entire school is a part of a family.
- In December each family does a service project for our community.





Family Groups

O.N.E is our big family but
we are divided into 5
different families

**Green
Family**

**Orange
Family**

**Purple
Family**

**Blue
Family**

**Yellow
Family**

Secret Signal

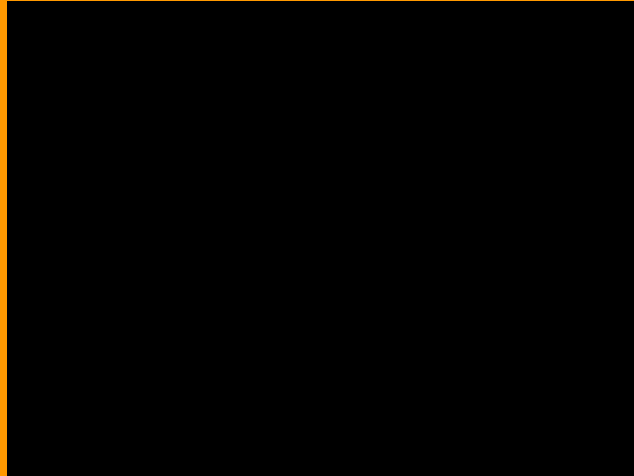


Each family has a secret signal they can do in the hall when they see someone from their family.





Secret Signal



Positive Notes



We celebrate children that have a positive note for the month. We also recognize the Tigers of the Month.



Pizark North Positive Behavior Referral



Date _____ Student _____

Please check all of the habit the child is excelling in:

- ___ Habit 1 — **Be Proactive** You're in Charge! I am a responsible person. I take initiative. I choose my actions, attitudes, and moods. I do not blame others for my wrong actions. I do the right thing without being asked, even when no one is looking.
- ___ Habit 2 — **Begin with the End in Mind** *Have a Plan* I plan ahead and set goals. I do things that have meaning and make a difference. I am an important part of my classroom and contribute to my school's mission and vision. I look for ways to be a good citizen.
- ___ Habit 3 — **Put First Things First** *Work First, Then Play* I spend my time on things that are most important. This means I say no to things I know I should not do. I set priorities, make a schedule, and follow my plan. I am disciplined and organized.
- ___ Habit 4 — **Think Win-Win** *Everyone Can Win* I balance courage for getting what I want with consideration for what others want. I make deposits in others' Emotional Bank Accounts. When conflicts arise, I look for third alternatives.
- ___ Habit 5 — **Seek First to Understand, Then to Be Understood** *Listen Before You Talk* I listen to other people's ideas and feelings. I try to see things from their viewpoints. I listen to others without interrupting. I am confident in voicing my ideas. I look people in the eyes when talking.
- ___ Habit 6 — **Synergize** *Together is Better* I value other people's strengths and learn from them. I get along well with others, even people who are different than me. I work well in groups. I seek out other people's ideas to solve problems because I know that by learning with others we can create better solutions than *anyone* of us can alone. I am humble.
- ___ Habit 7 — **Sharpen The Saw** *Balance Feels Best* I take care of my body by eating right, exercising and getting sleep. I spend time with family and friends. I learn in lots of ways and lots of places, not just at school. I find meaningful ways to help others.

Teacher Comments:

Teacher's Signature _____

Principal's Comments

Principal's Signature _____



Portrait of a Graduate



23-24 PBIS Monthly
Portrait of a Grad/Habit

<u>September</u> Personally Responsible and Reliable	<u>October</u> Collaborative	<u>November</u> Teachable/Learner
<u>December</u> Caring	<u>January</u> Confident	<u>February</u> Empathetic
<u>March</u> Critical Thinker	<u>April</u> Resilient/Flexible	

We introduce and discuss the
different monthly Portrait of a
Graduate traits



Portrait of a Graduate Matrix



Responsible
 Accepting tasks and duties
 with trustworthiness and
 accountability for the results
 (You are in control of yourself)



Classroom	Hallways	Restrooms
<ul style="list-style-type: none"> *Follow directions the first time *Act polite and courteous *Keep classroom orderly and clean *Be an active participant 	<ul style="list-style-type: none"> *Stay in your assigned line *Level 0 *Hands to self *Go directly to destination *Walk 	<ul style="list-style-type: none"> *Flush toilet *One push of soap *Three pushes of paper towel *Throw away paper towel in trash can after use *Giving others privacy
Cafeteria	Playground	Assembly
<ul style="list-style-type: none"> *Grab utensil, napkin, and milk in line the first time. *Respect personal space *Use appropriate hand signal for assistance *Use appropriate voice level *Clean up your area 	<ul style="list-style-type: none"> *Hands to self *Use your words *Use, share, and return equipment appropriately *Collect your things *Enter and exit building in an orderly manner 	<ul style="list-style-type: none"> *Hands to self *Act polite and courteous *Respect personal space *Enter and exit in an orderly manner

Portrait of a Graduate Matrix

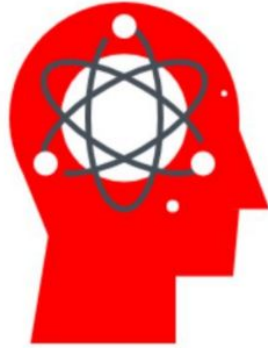


Collaborative
Working well with others
to reach a common goal



Classroom	Hallways	Restrooms
<ul style="list-style-type: none">*Speaking kindly*Taking turns*Using time wisely*Value other's ideas	<ul style="list-style-type: none">*Looking forward*Walking in a straight line*Hands to self*Level 0	<ul style="list-style-type: none">*Keeping restroom clean*Flushing the toilet*Keep water in sink
Cafeteria	Playground	Assembly
<ul style="list-style-type: none">*Cleaning up when directed*Respect personal space*Use appropriate voice level	<ul style="list-style-type: none">*Lining up quietly*What is on the ground, stays on the ground*Pick up equipment*Work together to solve an issue	<ul style="list-style-type: none">*Staying with your class*Maintaining personal space

Portrait of a Graduate Matrix



Teachable

Willing and able to seek knowledge and develop skills in all settings (Transferring and applying social skills from classroom to all settings)

Classroom	Hallways	Restrooms
<ul style="list-style-type: none">*Keeping an open mind*Responding appropriately*Grit*Trying to do your best work	<ul style="list-style-type: none">*Setting a good example for others*Responding appropriately	<ul style="list-style-type: none">*Setting a good example for others*Responding appropriately
Cafeteria	Playground	Assembly
<ul style="list-style-type: none">*Using manners*Appreciating staff*Willing to try new food items	<ul style="list-style-type: none">*Using skills to teach others*Including others*Asking for help	<ul style="list-style-type: none">*Being an active listener*Engaging when appropriate



Portrait of a Graduate Matrix



Learner

Participating in classroom lessons, discussions, and activities, and applying the skills you have learned

Classroom	Hallways	Restrooms
<ul style="list-style-type: none">*Goal Setting*Complete quality assignments*Using time wisely*Asking questions	<ul style="list-style-type: none">*Level 0 so others can learn*Being a role model to other classes	<ul style="list-style-type: none">*Using restroom quickly and return to learning
Cafeteria	Playground	Assembly
<ul style="list-style-type: none">*Eat first, talk later*Being mindful of personal space*Listening to directions*Using hand signals appropriately	<ul style="list-style-type: none">*Lining up quickly when whistle blows*Using equipment appropriately	<ul style="list-style-type: none">*Listening to speaker*Modeling appropriate behavior



Portrait of a Graduate Matrix



Confident
Thinking and acting independently with self-awareness

Classroom	Hallways	Restrooms
<ul style="list-style-type: none"> *Completing your work *Being mindful of others *Problem solving *Responding appropriately 	<ul style="list-style-type: none"> *Level 0 *Being mindful of your surroundings *Enjoying and respecting hallway displays 	<ul style="list-style-type: none"> *Giving others privacy *Cleaning up after yourself without being asked.
Cafeteria	Playground	Assembly
<ul style="list-style-type: none"> *Maintaining appropriate voice level *Respecting personal space *Cleaning up after yourself without being asked. 	<ul style="list-style-type: none"> *Being respectful of school property *Respecting personal space 	<ul style="list-style-type: none"> *Using appropriate voice level without being asked *Respecting personal space



Portrait of a Graduate Matrix



Empathetic

Understanding the experiences, perspectives, and needs of people around you and navigating relationships with generosity and patience



Classroom	Hallways	Restrooms
<ul style="list-style-type: none">*Understanding that everyone has value*Being patient*Using kind, respectful words	<ul style="list-style-type: none">*Being mindful of your surroundings*Yielding to other classes and staff	<ul style="list-style-type: none">*Waiting patiently*Respecting others' privacy
Cafeteria	Playground	Assembly
<ul style="list-style-type: none">*Waiting patiently*Using manners	<ul style="list-style-type: none">*Inviting others to play with you*Respecting personal space*Using kind, respectful words	<ul style="list-style-type: none">*Applauding appropriately*Listening respectfully*Responding appropriately

Portrait of a Graduate Matrix



Critical Thinker

Evaluating information, seeing patterns and connections, making meaning, testing ideas, and applying to real world (Responding appropriately to different situations)

Classroom <ul style="list-style-type: none">*Making connections*Problem solving*Setting goals*Being innovative*Asking questions	Hallways <ul style="list-style-type: none">*Being a role model*Going to your assigned location	Restrooms <ul style="list-style-type: none">*Leaving the area better than you found it.
Cafeteria <ul style="list-style-type: none">*Listening to staff*Problem solving*Leaving the area better than you found it.	Playground <ul style="list-style-type: none">*Listening to staff*Including others in games or activities*Trying to solve problems on your own	Assembly <ul style="list-style-type: none">*Listening to speaker*Responding appropriately



Portrait of a Graduate Matrix



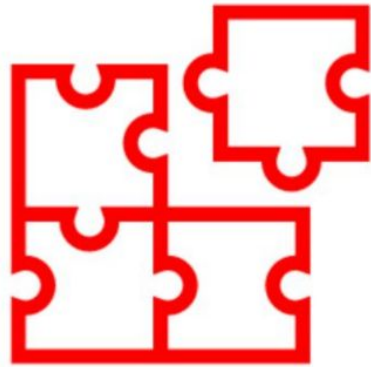
Resilient

Overcoming obstacles, learning through missteps, adapting to challenges and persisting despite setbacks



Classroom	Hallways	Restrooms
<ul style="list-style-type: none">*Trying your best*Keep working even when it's hard*Asking for help	<ul style="list-style-type: none">*Being mindful of your surroundings and responding appropriately	<ul style="list-style-type: none">*Being mindful of your surroundings and responding appropriately
Cafeteria	Playground	Assembly
<ul style="list-style-type: none">*Doing what is expected*Trying new foods	<ul style="list-style-type: none">*Trying new activities*Responding to situations appropriately	<ul style="list-style-type: none">*Responding to situations appropriately

Portrait of a Graduate Matrix



Flexible
Adjusting to new conditions, different roles, unpredictable situations, and shifting contexts

Classroom	Hallways	Restrooms
<ul style="list-style-type: none">*Going with the flow*Transitioning quickly and safely	<ul style="list-style-type: none">*Adjusting to other classes in the hallway*Listening to staff	<ul style="list-style-type: none">*Using stall that is available*Notifying staff when restroom needs attention
Cafeteria	Playground	Assembly
<ul style="list-style-type: none">*Listening to staff directions*Accepting menu changes	<ul style="list-style-type: none">*Allowing others to play when asked*Being respectful of how others want to play	<ul style="list-style-type: none">*Being respectful of presenter's material*Sitting where you are asked



Family Song

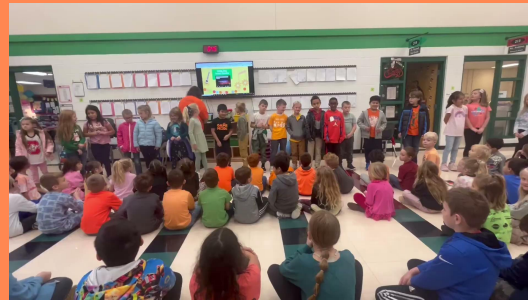
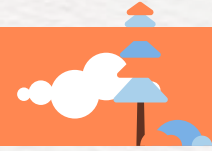


“You can count on me” is our school song and then some families have their own song.

Short Version of Family Song

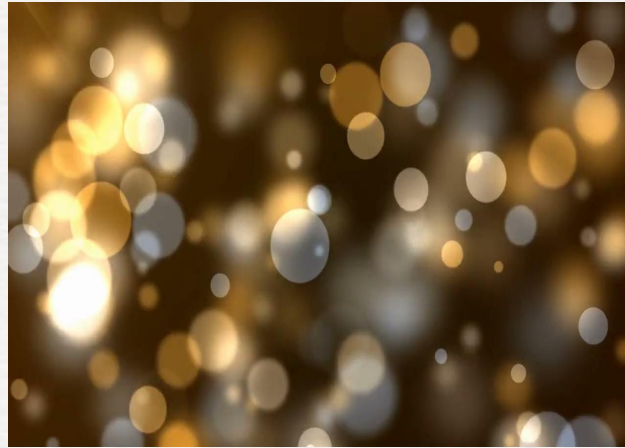


Family Song



Service Projects

- Caroling at nursery homes.
- Decorate coffee sleeves for a local coffee shop
- Decorate placemats for nursing homes
- Create a virtual Christmas Caroling for our families in the military.



Next Steps for North Families

- Break down our families into smaller groups.

For example: each staff will take 10-20 kids and do lessons together every week. Then the last week of the month we will meet as a whole group.



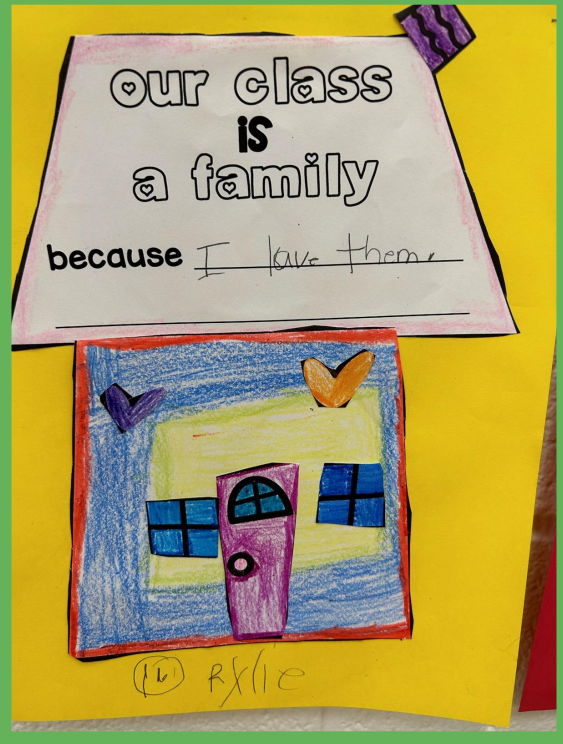
Our Class is a Family
8/24/23

1.SL.1.A.a

Following classroom listening rules (e.g., when someone is speaking, other students are quiet)

1.SL.2.A.a

Demonstrating active listening, according to classroom expectations (e.g. eye contact)



**Questions,
comments or any
ideas you would
like to share with
us to make us even
stronger** 



Families are like branches on
a tree. We grow in different
directions yet our roots
always remain O.N.E.
-Anonymous



