



# PBIS at BMS



PBIS framework using multiple systems at the same time

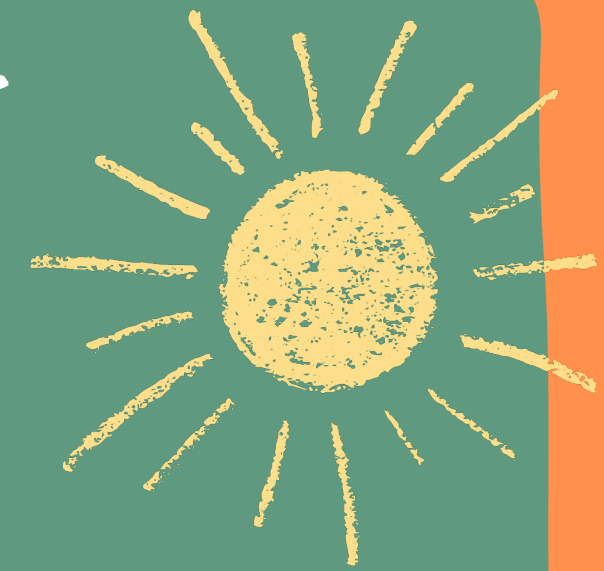


**BOURBON**  
MIDDLE SCHOOL





Brian Witt. Principal of  
Bourbon Middle School



Tara Eikermann. PBIS Tier I leader  
and 6th grade teacher





# BOURBON WARHAWKS

Bourbon Middle School 240 students  
Crawford County R-I 875 students  
Bourbon MO 1,200 population

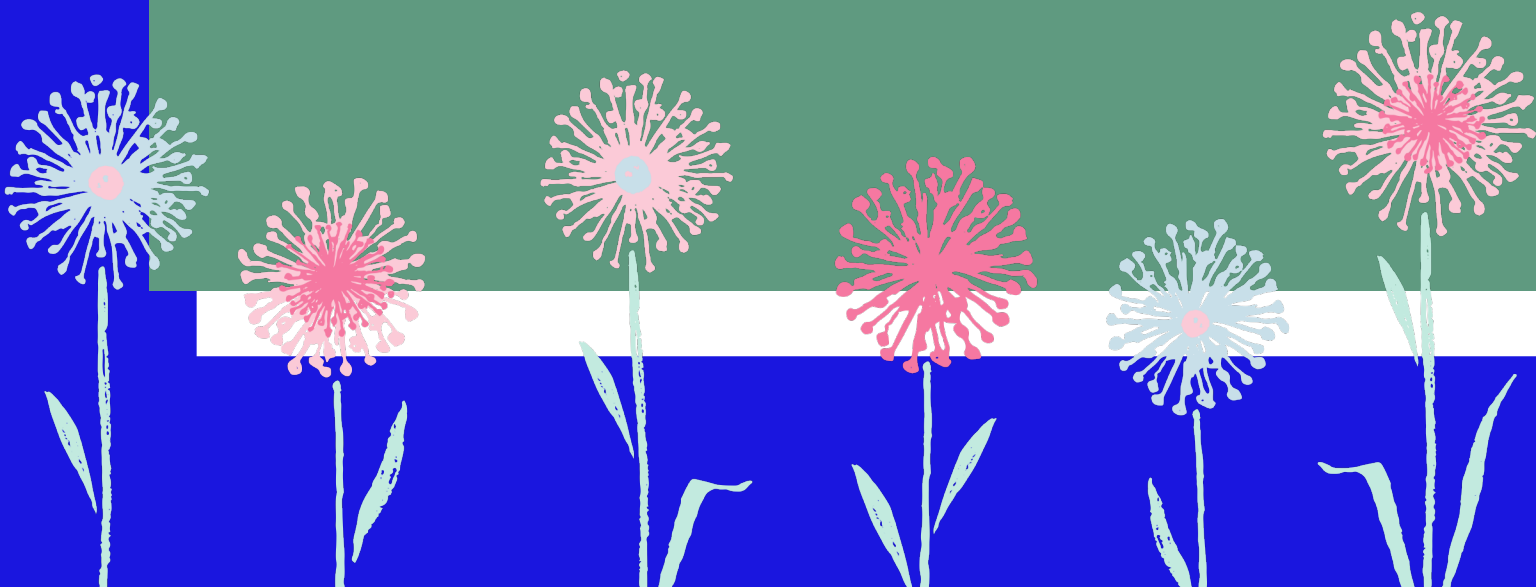


# Are you ready?

Attendees will identify the power of utilizing multiple systems to help students in the PBIS framework

Attendees will utilize flowcharts to follow an efficient process

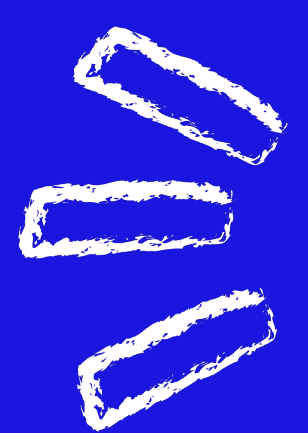
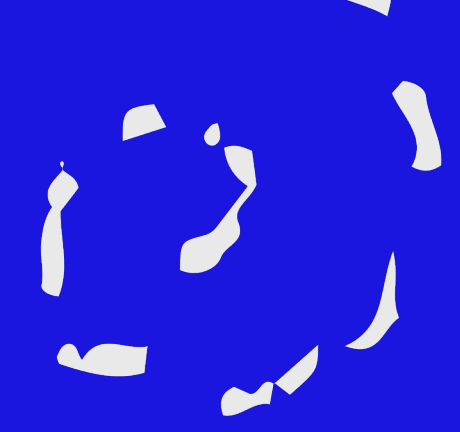
Attendees will consider tiered approach with behavior and academics



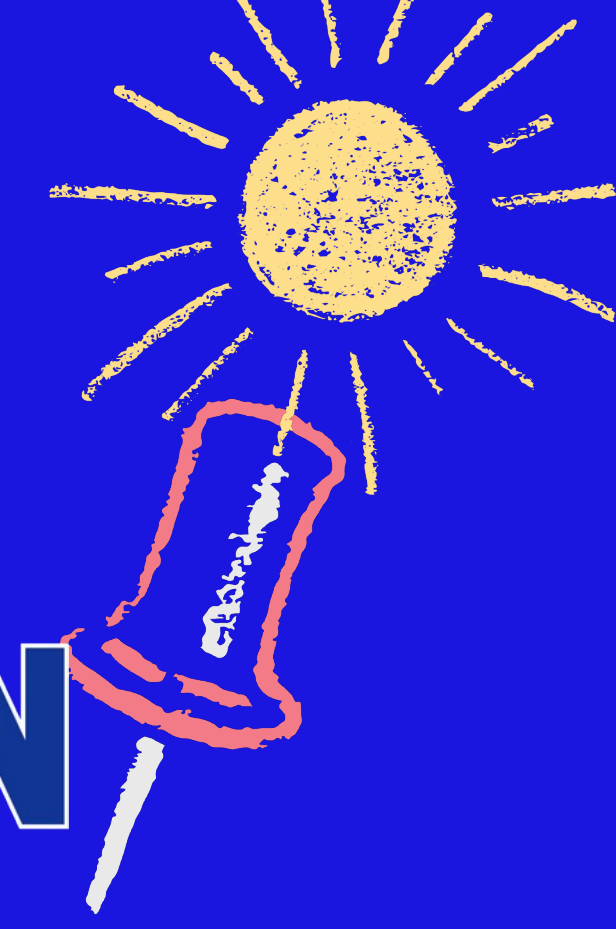
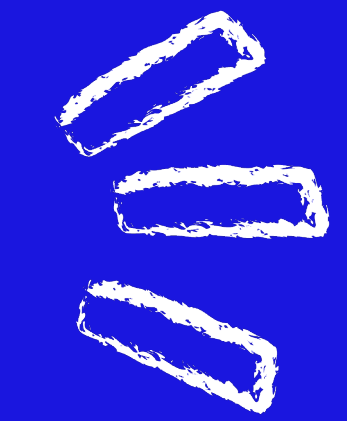
Do you suffer from  
Education overload?

PBIS, PLC, DCI, RTI, SEL, DACL,  
PBL, BSP, STEM, PTLW, DBDM,  
ETC,,,,,,,,,,,,,,,,,,,,,





Time?



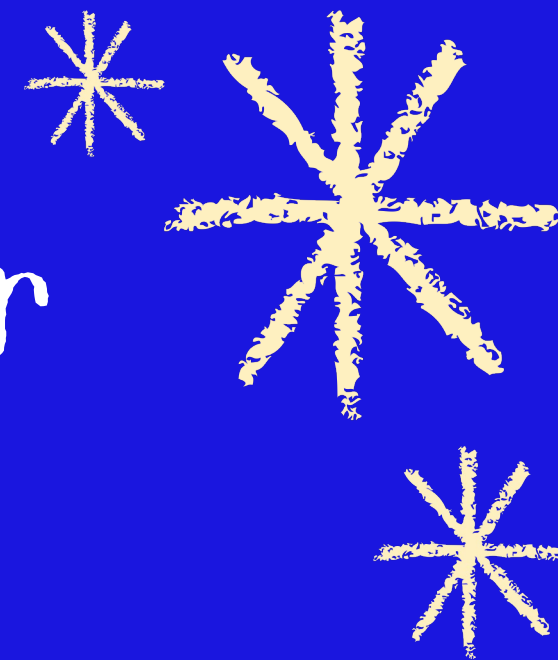
How many programs does your school require your staff to do each year?



**BOURBON  
WARHAWKS**

How many programs are you asked to add on top of existing programs?





# BMS The Warhawk Way



PBS/PLC Work Together  
Everyone involved  
District Leadership Team  
Building Leadership Team  
PBS Tier I / Tier II & III Teams  
Grade Level Teams  
Department Teams  
Communication/Social/





# PBIS – Handbook

## BOURBON MIDDLE SCHOOL




### *PBIS WARHAWK WAY HANDBOOK 2023-2024*

363 JOST STREET  
BOURBON, MISSOURI 65441  
BE RESPECTFUL! BE RESPONSIBLE! BE SAFE!



# Shared Agendas and Templates



**Bourbon Middle School**  
People Centered-Purpose Driven  
BMS

<p><b>CCR-1 Mission</b> The Crawford County R-1 Community empowers students to discover their purpose and to reach their potential.</p>	<p><b>CCR-1 Vision</b> The vision of the Crawford County R-1 Community is to be a source of pride, a leader in innovation, and a model of academic excellence that inspires a passion for learning.</p>
---	---

**CCR-1 Belief Statements-We believe...**

- Every student has purpose
- In high expectations and accountability
- Students thrive in a safe and secure educational setting
- In an active and engaging learning environment
- In a positive and collaborative school community
- In recruiting, retaining, and developing quality staff at all levels
- All stakeholders have a voice
- In good stewardship of district resources

**Team Norms**

- Be Positive and Student-centered
- Begin and End on Time
- Be Prepared
- Be an Active Participant and Work as a Team
- Stay on Topic

Agenda Topic	Discussion Notes	Outcomes/Next Steps




# PBS using PLC Framework


Collaboration with PBS teams as well as individual grade levels



# Behaviors




## The Warhawk Way



<p><b>In all settings</b></p> <ul style="list-style-type: none"> <li>★ We use appropriate language and volume in all areas</li> <li>★ We show respect to people and property</li> <li>★ We keep all areas clean</li> <li>★ We keep cell phones turned off and out of sight during the day</li> <li>★ We accept outcomes of our behavior</li> <li>★ We refuse to allow bullying in our school</li> <li>★ We keep hands, feet, and objects to ourselves</li> <li>★ We are aware of people around ourselves</li> <li>★ We report bullying behavior to adults</li> </ul>	<p><b>In the gym/assemblies</b></p> <ul style="list-style-type: none"> <li>★ We are a good audience</li> <li>★ We participate appropriately</li> <li>★ We talk only at appropriate times</li> <li>★ We focus on the presentation</li> <li>★ We keep comments/questions on topic</li> <li>★ We enter and exit in an orderly fashion</li> <li>★ We sit properly in bleachers</li> <li>★ We stay seated in designated area</li> </ul>
<p><b>In the classroom/library</b></p> <ul style="list-style-type: none"> <li>★ We are on time</li> <li>★ We participate appropriately</li> <li>★ We use technology appropriately</li> <li>★ We have required materials</li> <li>★ We are an active listener</li> <li>★ We complete assigned tasks</li> <li>★ We ask permission to leave assigned area</li> <li>★ We follow directions and safety procedures</li> <li>★ We keep walkways clear and safe</li> </ul>	<p><b>In the cafeteria</b></p> <ul style="list-style-type: none"> <li>★ We respect others food and personal space</li> <li>★ We are courteous to all staff</li> <li>★ We listen when adults make announcements</li> <li>★ We wait in line patiently</li> <li>★ We keep food on our own tray</li> <li>★ We clean up after ourselves</li> <li>★ We keep all food and drink in the cafeteria</li> <li>★ We remain seated until dismissed</li> <li>★ We line up calmly and quietly</li> </ul>
<p><b>In the hallway</b></p> <ul style="list-style-type: none"> <li>★ We respect property of ourselves and others</li> <li>★ We respect the education of others who are in class</li> <li>★ We keep our desk/locker clean and organized</li> <li>★ We use the drinking fountains appropriately</li> <li>★ We go directly to our destination</li> <li>★ We place backpacks and all personal belongings in locker/cubbies/desk</li> <li>★ We walk on the right side in an appropriate manner</li> </ul>	<p><b>On the bus</b></p> <ul style="list-style-type: none"> <li>★ We follow all directions given by driver</li> <li>★ We are courteous and respectful to other passengers and driver</li> <li>★ We use appropriate language</li> <li>★ We only eat or drink when allowed by the driver</li> <li>★ We place all trash in trash cans</li> <li>★ We remain seated and facing forward</li> <li>★ We keep all personal items in backpack</li> <li>★ We keep aisle clear</li> </ul>
<p><b>In the bathroom</b></p> <ul style="list-style-type: none"> <li>★ We respect the privacy of others</li> <li>★ We clean up after ourselves</li> <li>★ We use the facilities appropriately</li> <li>★ We wash our hands with soap and water</li> <li>★ We return to class promptly</li> <li>★ We enter and exit quietly</li> <li>★ We report problems to an adult</li> </ul>	<p><b>On the playground</b></p> <ul style="list-style-type: none"> <li>★ We enter and exit the building quietly</li> <li>★ We follow playground rules</li> <li>★ We take turns with others</li> <li>★ We dress appropriately for the weather</li> <li>★ We follow adult directions</li> <li>★ We line up quickly and quietly</li> <li>★ We use equipment appropriately</li> <li>★ We walk to chosen play area</li> <li>★ We play appropriately with others</li> </ul>

**Our Purpose:**  
To create respectful and responsible members of society, accountable for their own social behaviors and academic achievement.

**Be Respectful, Responsible, Safe**



**Voice Levels**

- 4 ~ Outside
- 3 ~ Passing Time
- 2 ~ Classroom
- 1 ~ Partner
- 0 ~ No Talking

# Expectations Universal Matrix

5th & 6th Grade !

Tickets  
Store



7th & 8th Grade !

PRIDE  
Quarterly  
Field Trips

Tier one: lessons once  
a week Tuesday  
expectations

Tier two: Check in & out, Check &  
Connect, Mentors, Student  
Ambassadors, Knights of the round  
table



Sabers, Teacher  
recommendation  
forms



Academics

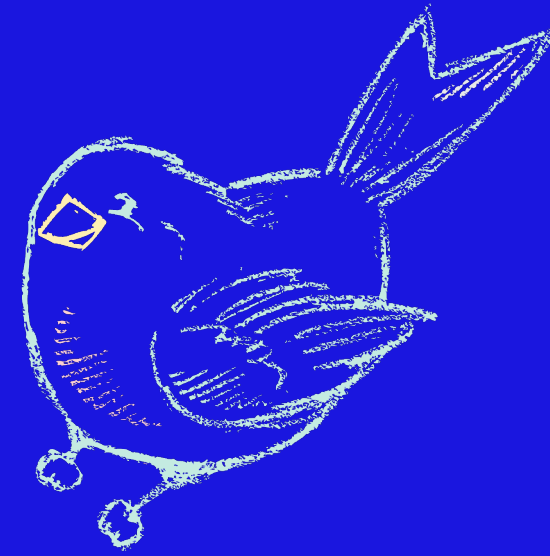
IXL Diagnostic  
Weekly

Student Driven  
Action Plan



Weekly Lessons  
and practice

# Instruction



DCI



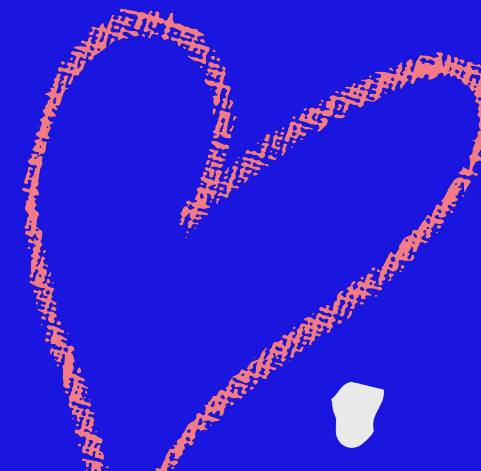
DAACL DBDM

Building training, grade level training, and Individual coaching

Learning Target Walkthrough Form		
Teacher:		Date:
Time/Period	Room Number	Grade/Subject
Essential Function	Teacher	Student
EF #1 Educators teach students to determine, "Where Am I Going?"	<input type="checkbox"/> Writes well-written learning targets (meets 6/6 criteria*) <input type="checkbox"/> Prominently displays learning target <input type="checkbox"/> Unpacks the daily learning target with students <input type="checkbox"/> N/A <input type="checkbox"/> Refers to learning target throughout the lesson	<input type="checkbox"/> Can show or tell learning targets <input type="checkbox"/> # of students asked <input type="checkbox"/> # of students who could show or tell the target
Notes		

Learning Target Walkthrough Form		
Teacher:		Date:
Time/Period	Room Number	Grade/Subject
Essential Function	Teacher	Student
EF #1 Educators teach students to determine, "Where Am I Going?"	<input type="checkbox"/> Writes well-written learning targets (meets 6/6 criteria*) <input type="checkbox"/> Prominently displays learning target <input type="checkbox"/> Unpacks the daily learning target with students <input type="checkbox"/> N/A <input type="checkbox"/> Refers to learning target throughout the lesson	<input type="checkbox"/> Can show or tell learning targets <input type="checkbox"/> # of students asked <input type="checkbox"/> # of students who could show or tell the target
Notes		





Thank You



Brian Witt [wittb@warhawks.k12.mo.us](mailto:wittb@warhawks.k12.mo.us)

Tara Eikermann [eikermann@warhawks.k12.mo.us](mailto:eikermann@warhawks.k12.mo.us)

<https://www.warhawks.k12.mo.us/>