

## Assessments/Data

Head Start prides itself in knowing where a child is developmentally. With the data tools that we utilize Head Start is able to track needs and successes.

## Checkpoints

For 40 years, Teaching Strategies has provided early childhood educators with innovative, research-proven, effective resources to help build a strong foundation for our youngest learners.

Only through ongoing, observation-based formative assessment can teachers truly get to know and build relationships with each child. *GOLD®*, grounded in 38 research-based objectives for development and learning, helps Head Start programs support the whole child and make meaningful, data-driven decisions that lead to improved outcomes.

## Brigance

Head Start evaluate the key predictors of school success and align to the Head Start Early Learning Outcomes Framework. These screening tools equip program professionals to meet the federal requirement that children be screened within 45 days of entering Head Start. Each screener assists with identifying potential developmental delays, giftedness, and allows for comparison of a child's performance to an at-risk cutoff score to reduce the chance of over-referrals. Our Head Start screening tools address the domains of Physical Development, Language Development, Academic Skills/Cognitive Development, and Self-help and Social-Emotional Skills.

**Education:** *The process of receiving or giving systematic instruction.*

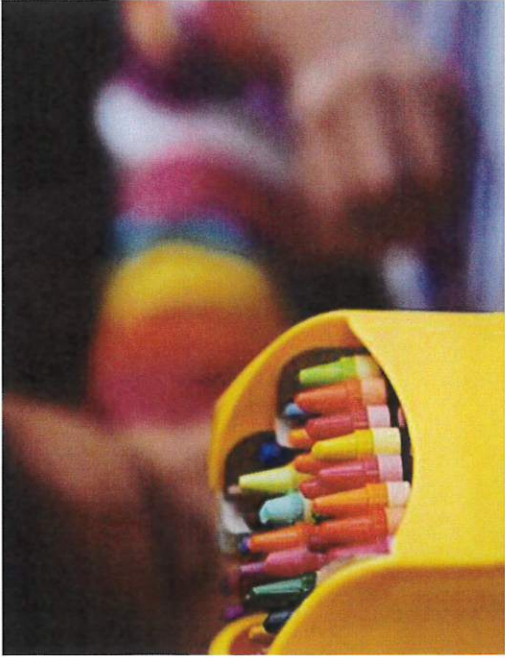
Head Start Performance Standards require that all programs provide highly-quality early education and child development services for *ALL* children. WE must be a program that supports the implementation of teaching and learning environments that promote healthy development with integrity.

As the Education Specialist it is my job to supervise as well as communicate the importance of every facet of the Head Start Organization.



# Green Hills Head Start

Education Specialist  
Home Base & Centers



## Accountability Effort

Head Start strives to educate parents and children. We hold our educators to high expectations and standards. With the use of different tools we are able to hold our educator accountable for educating our families.

**CLASS: Classroom Assessment Scoring System** is an observation instrument developed to assess classroom quality. Using three domains: Emotional Support, Classroom Organization, and Instructional Support to capture the interactions between teachers and students.

**PBS: Positive Behavior Support** is a set of research-based strategies used to increase quality of life and decrease problem behavior by teaching new skills and making changes in a person's environment.

## Home Base Program

- ❖ Provides experiences to children from 0 – 5 years of age in a family setting.
- ❖ Weekly Home Visits supporting child development with Growing Great Kids Curriculum
- ❖ Play groups twice a month to provide social opportunities
- ❖ Parent/Child Focus
- ❖ Engagement focus from the parents to the child.

## Growing Great Kids<sup>A</sup> research

based parenting curriculum is unique in that it fosters optimal child development through enhancing parent-child relationships. Our curriculum is designed to help families' master six essential parenting skills sets. These skill sets, or Daily Do's, are based on decades of research that indicates enhanced child development across all the learning domains included in the Early Learning Outcomes Framework. Supporting parents to understand and practice these critical parenting skills is an integral focus of Growing Great Kids.

# “Serving Children and Families First”

## Center Based Program

- ❖ Provides experiences to children 3 to 5 years of age in an educational setting.
- ❖ Research Based Curriculum used: Creative Curriculum
- ❖ Children Assessed 3 times per year to track growth and development
- ❖ Healthy meals provided
- ❖ Indoor and Outdoor learning environment.

## Creative Curriculum

A comprehensive curriculum that addresses all aspects of teaching 3 to 5 year old children. This curriculum defines *what* to teach; *why* the content and skills are appropriate expectations for young children; and *where, when, and how* to teach effectively. This curriculum is also connected to an assessment system so that teachers can use information from assessment to plan and guide instruction.

