

# Practice Makes Progress



Indian Creek Elementary School  
9801 Grand  
Kansas City, MO 64114

Center School District #58

# Outcomes

- Explore strengths of your school community for getting started.
- Become familiar with how to use data for decision-making, action planning, and creating celebrations.
- Hear another school's journey and how we evaluate and continually improve our program for school-wide success.





*our* **JOURNEY**



It began during the 2016-2017 SY

# WHO WE ARE

- Tier 2
- K-5
- Title I School
- Enrollment: 300
- 30 Certified Staff Members
- 13 Classified Staff Members

## PBIS Recognitions:

- Bronze: 18-19 SY & 19-20 SY
- Silver 20-21 SY

Indian Creek Elementary School is in the Center School District. It is nestled in the heart of south Kansas City. We are proudly diverse with an urban/suburban feel.

## Student Demographics

- Students Served – 300
- White - 9.00%
- Black - 63.00%
- Latin- 16.33%
- Asian/Pac. Isl. - 1.67%
- Native American - 0.33%
- Multiracial- 9.67%
- Free/Reduced – 100.00%\*
- Students with IEPs - 13.67%

\*Community Eligibility Provision

# WHO WE ARE & WHERE WE ARE GOING....

- Percentage of Students with 90% or better Attendance – 92.33%
- Office Discipline Referrals (ODR's)
  - 85.00%: 0-1 ODRs
  - 8.33%: 2-5 ODRs
  - 6.67%: 6+ ODRs



Indian Creek Elementary School has worked to use data to drive decision making. This has resulted in the following outcomes for students, as of March 31 of the 2019 school year: The number of students with 90% or better attendance has gone from 268 to 277 for an increase of 3.36%; office discipline referrals have gone from 417 to 318 for a decrease of 23.74%; In school suspensions have gone from 14 to 4 for a decrease of 71.43%; and out of school suspensions have gone from 76 to 37 for a decrease of 51.32%.

# THE GROWTH MINDSET



## COACH

A Teacher's Month-by-Month Handbook  
for Empowering Students to Achieve  
Annie Brock and Heather Hundley

# THE GROWTH MINDSET PLAYBOOK



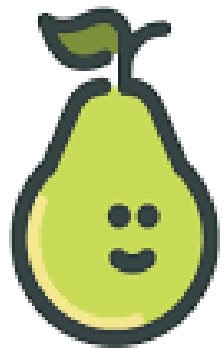
A Teacher's  
Guide to  
Promoting  
Student  
Success

Annie Brock and Heather Hundley  
authors of The Growth Mindset Coach

# growth mindset



# Mindset Matters!



# Pear Deck™

Temp Check

Let's do a quick temperature check...



Students, drag your icon

**SW-PBS Team Agenda/Notes**  
Date: May 6, 2022

Rebecca Meyer	Beverly Hampton	CJ Bass	Christian Nord	Billee Potts	Angela Price	Jeremy Mathis	Jennifer Ross	Deanna Smith

**Members Present: Put an x above for all present members**

**Meeting Norms:**

- Be open minded,
- Leave your biases outside the door
- Act in our students' best interest
- Hold each other accountable
- Be a problem solver
- Be respectful of what you say and how you say it
- Don't take it (make it) personal
- Be respectful

**Norm Check: PANCAKES!**

Objective/Outcome/Notes Meeting Dates for the Year: First Friday of every month. Team Member Year Assignments:	Person Reporting
Chairperson: Deanna Smith Secretary: Rebecca Meyer Database Manager: Jeremy Mathias, Jennifer Ross Communication Coordinator: Beverly Hampton Time Keeper: Christian Nord Cheerleader: Billie Potts Historian: Deanna Smith & Angela Price	
<b>Celebrations:</b>	TEAM
<b>Item 1:</b> District PBIS PD Update:	Smith
<b>Item 2:</b> Building PD to support <a href="#">Solution Plan</a> :	Smith/Price
<b>Item 3:</b> Hallway Heroes/Sheroes, Cafeteria Captains, & Waggin' Your Tail Celebration Updates:	TEAM



**SW-PBS Team Agenda/Notes**  
Date: May 6, 2022

<b>Item 4:</b> SAS & TIFI:	Smith
<b>Item 4:</b> 4th Quarter Celebration Plans What is the point goal for the EOY?	TEAM
<b>Item 5:</b> 22-23 PBIS Team Roster 22-23 Goals	Smith/Price
<b>Item 5:</b> <u>Summer Institute Presentation and PBIS Recognition</u>	
<b>Possible Agenda Items for Next Meeting: TBD 2022</b>  <b>Updating Matrix, Handbook, Majors-Minors, etc.</b>	
<b>Notes:</b>	

**Our Vision: Learning for All, Stronger Together!**

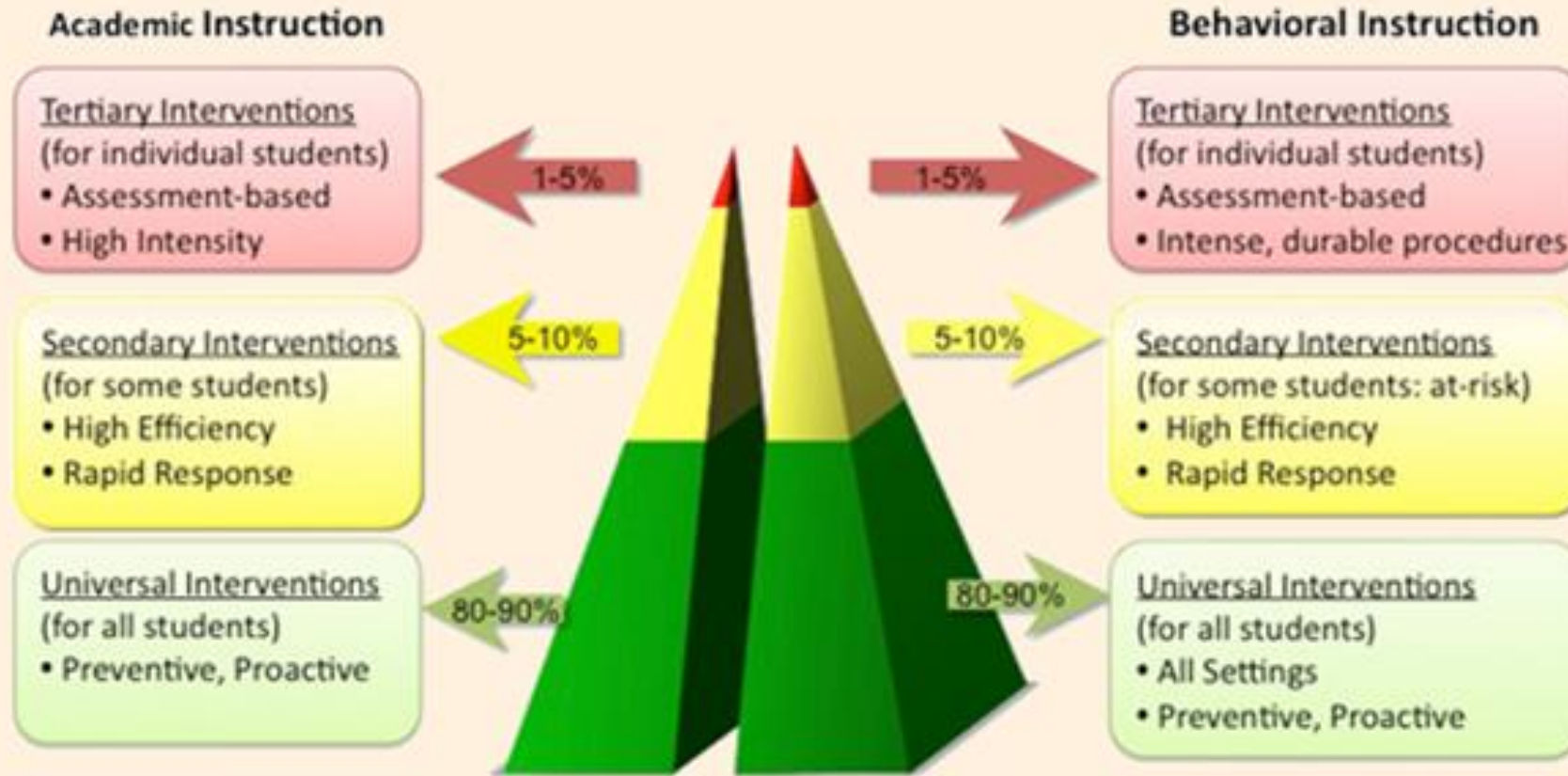
At Indian Creek Elementary, our high expectations cultivate knowledge for students to become lifelong learners, effective communicators, and responsible citizens who are prepared for success in a diverse society.





*“Data beats emotions.”* – Sean Rad

## Designing Schoolwide Systems for Student Success



# ANALYZE

# DATA

# IMPACT

# STRATEGIZE

Big\_5\_Generator\_2019-2020

File Edit View Insert Format Data Tools Extensions Help Last edit was made on March 9, 2020 by Joyce Suedmeyer

100% \$ % .0 .00 123 Verdana 10 B I U A

	A	B	C	D	E	F	G	H	I	J	K	L	M	N	O	P	Q	R	S	T	U	V	
9	Indian Creek Cumulative ODR by Location for 2019-20 school year as of February																						
10		August	September	October	November	December	January	February	March	April	May	June	July										
11	Classroom	11	32	37	22	25	23	25															175
12	Playground	2	3	9	3	3																	20
13	Commons																						0
14	Hall/Breezeway	5	3	11	6	3	2	2															32
15	Cafeteria		3	3	1	4		6															17
16	Bath/Restroom		1		3	1																	5
17	Gym			1	1																		2
18	Library					1																	1
19	Bus Loading																						0
20	Parking Lot																						0
21	Bus			2	2	1	4	5															14
22	Special Event																						0
23	Off-Campus																						0
24	Stadium																						0
25	Office																						0
26	Locker Room																						0
27	Other Location						2																2
28	Unknown Location		1	1																			2
29																							
30																							
31																							
32																							
33	Indian Creek	FebruDR's by Locatio																					
34	Classroom	25																					
35	Playground	0																					

Location	Count
Classroom	175
Playground	20
Commons	0
Hall/Breezeway	32
Cafeteria	17
Bath/Restroom	5
Gym	2
Library	1
Bus Loading	0
Parking Lot	0
Bus	14
Special Event	0
Off-Campus	0
Stadium	0
Office	0
Locker Room	0
Other Location	2
Unknown Location	2

0 0 ODR's by Location

February

Coaching Classroom Management

REPRODUCIBLE FORM  
5.2

## Basic 5 Observation Form

Clear Form

(15 minutes)

Teacher: \_\_\_\_\_ Date: \_\_\_\_\_ Time: \_\_\_\_\_

Observer: Dr. Angela Price Class: \_\_\_\_\_ Activity: \_\_\_\_\_

**STEP 1** During a 10-minute observation period, record simple tally marks for each of the following behaviors. (10 minutes)

Benchmark	Observation period (10 minutes)		Total
	(Positive)	(Negative)	
Ratio of Interactions			
Opportunities to Respond			
Disruptions			

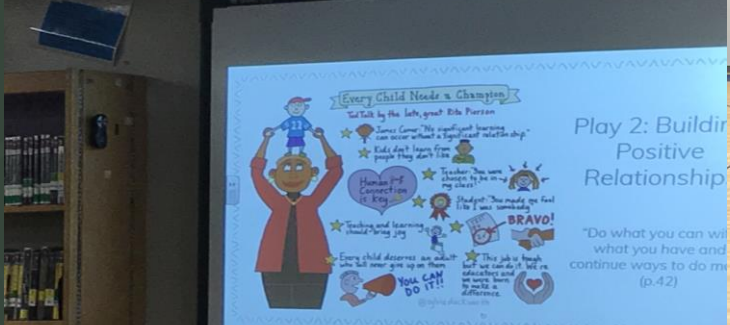
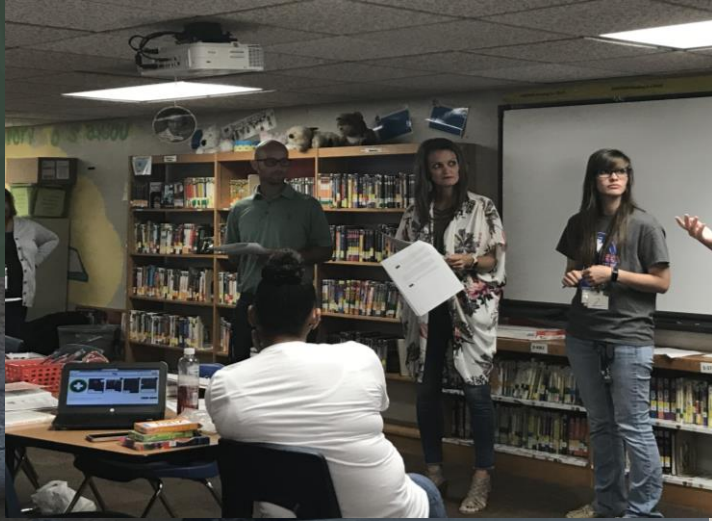
Ratio of interactions = \_\_\_\_ : \_\_\_\_ (Positive:Negative)

**STEP 2** For the next 5 minutes, focus on a different student every 5 seconds. Record a "+" symbol to indicate on-task or engaged behavior and a "-" symbol to indicate off-task behavior. When each student has been observed, begin the progression again. Continue until 5 minutes has elapsed. (5 minutes)

1	2	3	4	5	6	7	8	9	10	11	12
13	14	15	16	17	18	19	20	21	22	23	24
25	26	27	28	29	30	31	32	33	34	35	36
37	38	39	40	41	42	43	44	45	46	47	48
49	50	51	52	53	54	55	56	57	58	59	60

Divide the number of on-task (+) marks by the total number of marks (60).  
Time on Task (percentage of on-task behavior) = \_\_\_\_ %.

© 2010 Pacific Northwest Publishing

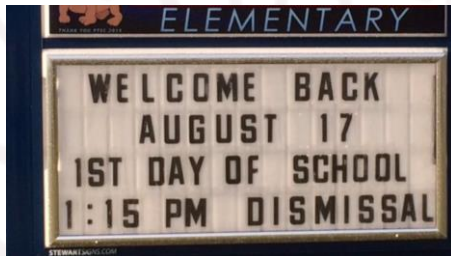






TEAMWORK MAKES THE DREAM WORK!

# Indian Creek's "Paws"itive Bulldogs

## Philosophy

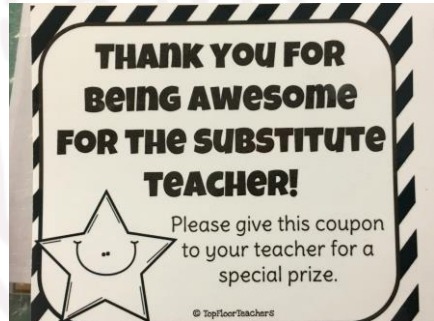
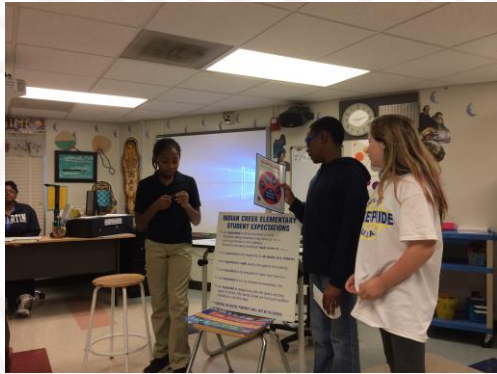
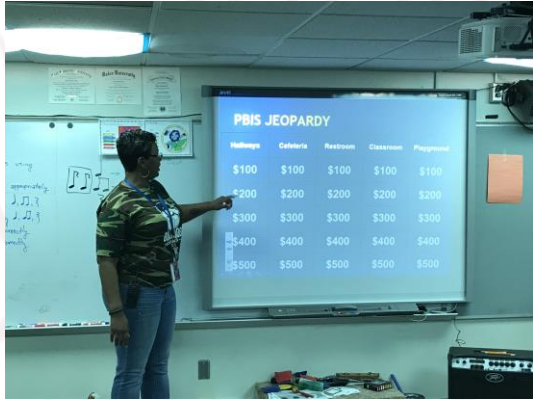
ICE believes that all learners will acquire the skills necessary to develop self-discipline, positive social relationships and academic success; these skills will be taught, expected, reinforced, and coached daily.



	<p><b>ALL Settings</b></p>	
<p><b>BE SAFE</b></p>	<p>I can</p> <ul style="list-style-type: none"> <li>• Keep my hands and feet to myself</li> <li>• Use school materials and equipment appropriately</li> <li>• Take care of school property</li> </ul>	
<p><b>BE RESPECTFUL</b></p>	<p>I can</p> <ul style="list-style-type: none"> <li>• Be kind and include others</li> <li>• Follow directions the first time</li> <li>• Use polite words and tell the truth in a considerate (gracious) voice</li> </ul>	
<p><b>BE RESPONSIBLE</b></p>	<p>I can</p> <ul style="list-style-type: none"> <li>• Follow directions the first time</li> <li>• Keep my eyes on the speaker with my body ready and quiet</li> <li>• Be on time, organized, and prepared</li> </ul>	

## Restroom Expectations Video





**100 Points**

- ❖ Slinkys
- ❖ Design your own cup
- ❖ Sunglasses
- ❖ Slap bracelets



# Building Positive Behaviors

Goals for Life	All Settings	Hallways	Cafeteria	Restroom	Recess	Computer Lab	Arrival/Departure	Bus	Assemblies	Emergency	Classroom
 <b>Be Safe</b> I can take good care of myself even if I am mad.	*Hands and feet to self *Use school materials and equipment appropriately	*Walk on the 2nd tile on the right side of hallway *My body will stay to myself	*Walk in the cafeteria and follow the "flow" (explained in lesson plans) *Sit on seat correctly with feet facing forward	*Feet on the floor *Keep water in the sink	*Use equipment correctly *Stay within playground boundaries	*Walk to work station *Stay in your workspace	*Walk to assigned area *My body will stay to myself	*Walk on and off the bus to and from your seat *Keep aisle clear	*Sit on pockets with hands in lap *Keep medals around neck and awards in lap/backpack	*Listen to directions from the adult *Find an adult if necessary	*Hands and feet to self *Use school materials and equipment appropriately
<b>Be Respectful</b> I can be productive and follow directions even if I don't want to.	*Be kind and include others *Follow directions the first time	*Observe and appreciate student work with your eyes only *Allow lines to pass	*Listen and follow adult's instructions on lunch duty *Speak to students in your proximity only	*Wash hands with soap and water *Treat the restroom properly	*Include others *Take turns	*Listen and follow adult directions *Use appropriate voice level	*Listen to adults in charge *Encourage others	*Face forward, hands to self, bottom on seat and feet in front on the floor *Be kind to others, follow the golden rule	*Stay in personal space *Clap appropriately	*Walk appropriately to the designated area *Listen and wait patiently for the adult's instruction	*Be kind and include others *Follow directions the first time
<b>Be Responsible</b> I can be okay, even when others are not okay.	*Use polite words & tell the truth in a considerate (gracious) voice *Follow directions the first time	*Allow others to learn *Take the most direct route to destination	*Use good manners (explained in lesson plans) *Get all utensils, milk, etc. before taking your seat	*Leave the restroom better off than you found it *Use 2 paper towels and throw away in a trash can	*Play fairly *Return equipment	*Help to maintain the equipment in the lab *Stay on task	*Be open to other ideas *Have all belongings with you and keep track of them	*Greet and thank the bus driver *Be ready for your stop	*Be proud of yourself when receiving an award *Actively participate	*Follow set procedures *Stay calm	*Use polite words & tell the truth in a considerate (gracious) voice *Follow directions the first time
	*Eyes on speaker and body is ready and quiet *Be on time, organized, & prepared	*Keep the pace of your class *Return to class promptly	*Raise hand and receive permission to leave seat *Clean up area when finished eating	*Return promptly to assigned area/leave seat *Report any problems to an adult	*Report problems to the adult on the playground and/or classroom *Solve problems without the help of teachers when possible	*Report any problems to an adult *Logoff and clean up after yourself	*Report any problems to an adult *Report any problems to an adult	*Report any problems to an adult *Keep track of belongings and relatives	*Be alert *Walk at all times (receiving an award or when volunteering, etc.)	*Eyes on speaker and body is ready and quiet *Be on time, organized, & prepared	

## Shopaholics



Waggin' Your Tail Award



Cafeteria Captains



Hallway Heroes & Sheroes

## Indian Creek Elementary Positive Behavioral Interventions & Supports Staff Handbook



### ICE PBIS

Dream, Think, Believe, Achieve

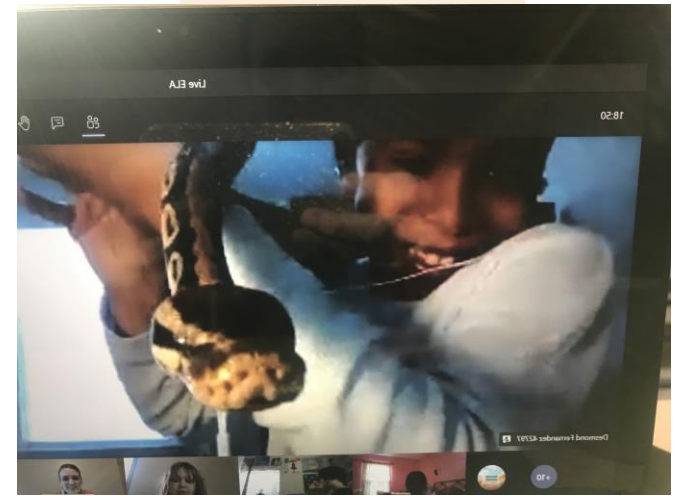
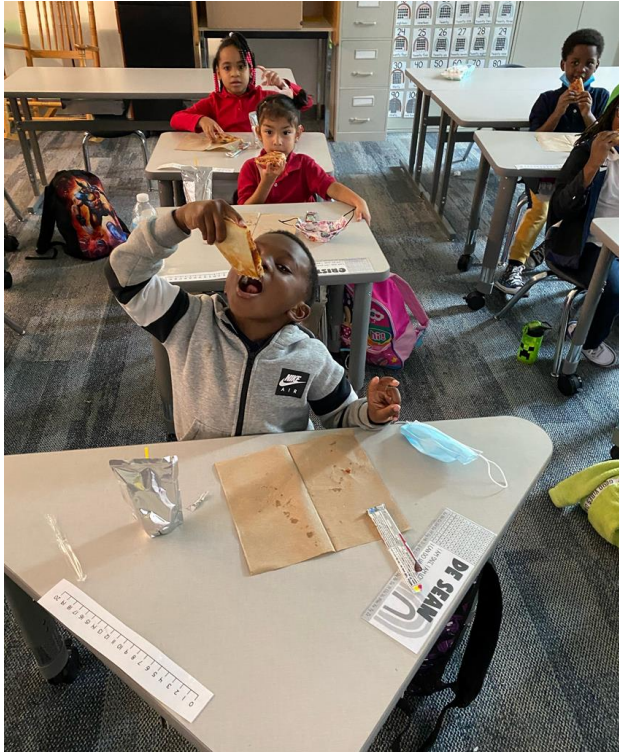
By Being

SAFE

RESPONSIBLE

RESPECTFUL

School PBIS Staff Manual



A Celebration is a Celebration!







**"Daily PAWS"**  
(pause-reflect-focus)



Student \_\_\_\_\_ Date \_\_\_\_\_

Safe	Respectful	Responsible
I keep my body to myself and <u>in my space</u> .	I use <u>appropriate</u> words, tone and volume.	I take care of myself, <u>control</u> my reactions.
I <u>go</u> where adults expect me to be.	I follow directions <u>completely</u> .	I <u>ask</u> for and <u>accept</u> help.

2 = I did it with 1 or less reminders/redirects      1 = I did it with 2 to 3 reminders/redirects  
0 = I needed 4 or more reminders/redirects

**Kindergarten Daily Report**

Time or Subject	Be Safe	Be Respectful	Be Responsible	Staff Initials	Positive Comments
9:30	2 1 0	2 1 0	2 1 0		
12:15	2 1 0	2 1 0	2 1 0		
1:15	2 1 0	2 1 0	2 1 0		
1:55	2 1 0	2 1 0	2 1 0		
3:30	2 1 0	2 1 0	2 1 0		

Today's goal is: 55% 60% 65% 70% 75% 80% 85% 90%

Todays Points: \_\_\_\_\_ Points Possible: \_\_\_\_\_ Todays Percentage: \_\_\_\_\_%



**(SAEBRS)**

Social, Academic, and Emotional Behavior Risk Screener

**Bulldog Brigade Report**

Student Name \_\_\_\_\_ Date \_\_\_\_\_

**3** = Yes I did with 1 redirect or less      **2** = Yes I did with 2-3 redirects/teacher intervention      **1** = No I needed 4 or more redirects/teacher intervention

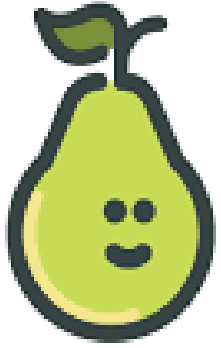
Be Safe	Be Respectful	Be Responsible	Teacher Initials	Positives
3 2 1	3 2 1	3 2 1		
3 2 1	3 2 1	3 2 1		
3 2 1	3 2 1	3 2 1		
3 2 1	3 2 1	3 2 1		
3 2 1	3 2 1	3 2 1		
3 2 1	3 2 1	3 2 1		

Today's Goal: 55% 60% 65% 70% 75% 80% 85%

Today's Points \_\_\_\_\_ Points Possible \_\_\_\_\_/54

Today's Percent \_\_\_\_\_%





# Pear Deck™

Where do you stand?

Drag the dot to indicate whether you agree or disagree:



<https://app.peardeck.com/student/tshdlpxic>

**QUESTIONS**

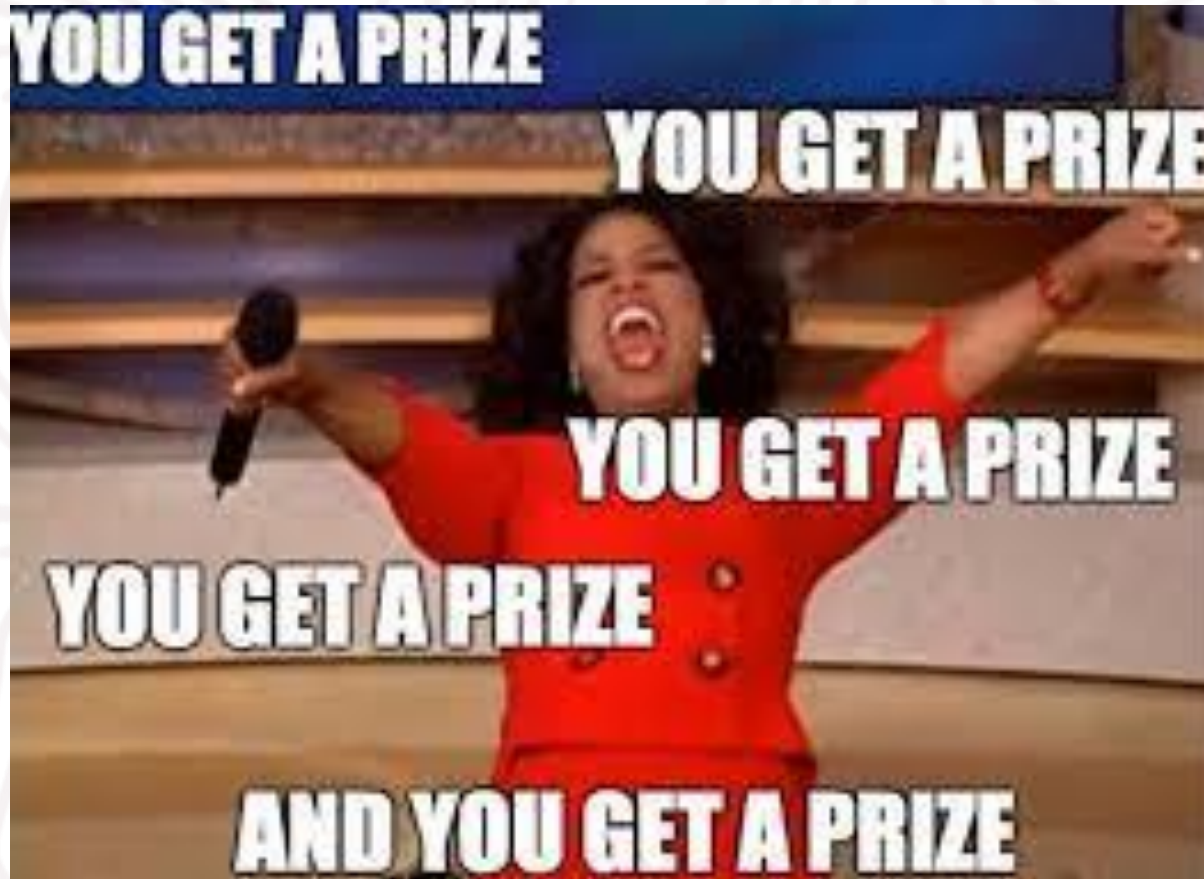


**THANK YOU!**

# Practice Makes Progress

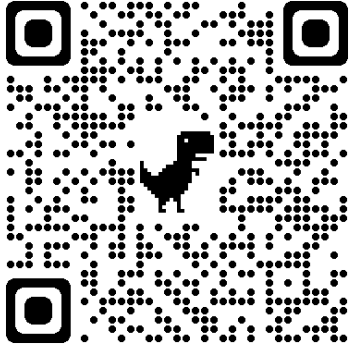


**It will be colorful at times  
but,  
STAY THE COURSE!! It Works!**

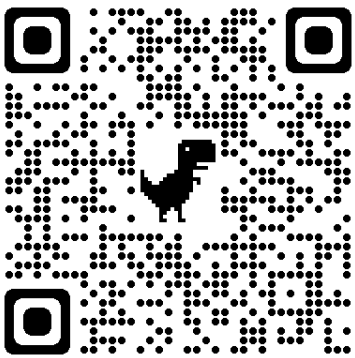


## Wheel of Names

# CONTACT US



<https://www.facebook.com/ICEBULLDOGS>



<https://twitter.com/ICEBULLDOGS>



Indian Creek Elementary School  
9801 Grand  
Kansas City, MO 64114

Center School District #58

*Dr. Angela Price-Principal*  
[aprice@center.k12.mo.us](mailto:aprice@center.k12.mo.us)

816-612-4253

*Beverly Hampton-1<sup>st</sup> Grade  
Teacher*

[bhampton@center.k12.mo.us](mailto:bhampton@center.k12.mo.us)

*Billee Potts-Behavior  
Interventionist*

[bpotts@center.k12.mo.us](mailto:bpotts@center.k12.mo.us)

