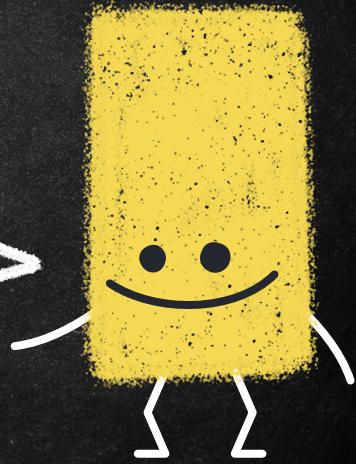
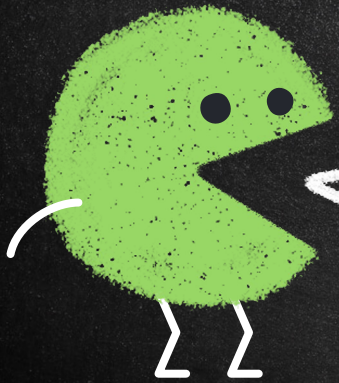


WHOOMP, THERE
IT IS!

Presented by:
The South Park PBS
Squad




SESSION OUTCOMES

Attendees will...

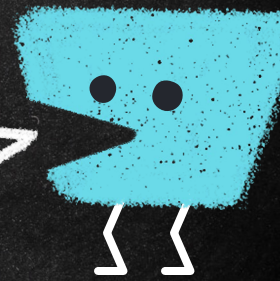
- ❑ Be provided with Tier 1 resources to help new teachers, as well as tenured teachers, with implementing the eight Effective Teaching and Learning Practices into their classrooms.
- ❑ Be provided with a variety of resources and materials to enhance Tier 1 implementation, including celebration ideas and videos.
- ❑ Leave with the enthusiasm to revamp their student and staff building culture.



8 ESSENTIALS

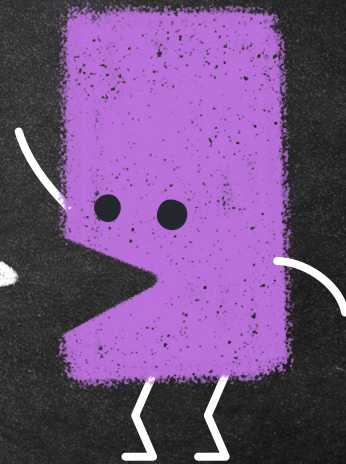
A yellow, textured, circular character with two black dots for eyes and a simple curved line for a smile. It has two thin white legs.

“Hey man, do you have any idea what the 8 essentials are?”

- 
- A blue, textured, rectangular character with two black dots for eyes and a simple curved line for a smile. It has two thin white legs.
- Classroom Expectations
 - Classroom Routines/Procedures
 - Active Supervision
 - Encourage Expected Behavior
 - Discourage Unexpected Behavior
 - Opportunities to Respond
 - Task Difficulty & Academic Success
 - Activity Sequencing & Offering Choice

“

*Now that I know what the
8 essentials are, how do I
implement them in my
building?*



OPPORTUNITIES TO RESPOND

Video

Survey

- ❑ For each of the 8 essentials we make a staff video and provide a survey to our teachers. Those that complete the survey will be provided a special visit from the woot woot cart.
- ❑ This also provides opportunities for new teachers to collaborate and obtain strategies to implement in their classrooms.



HOW DO WE GET THE STAFF ENGAGED?

Potty Time

Staff Newsletter

PBS Minutes

Staff Challenge

Teacher Rewards

Data Board

Woot Woot Cart

PBS Lesson Calendars

 POTTY TIME WITH PBS 

April Monthly Goal:
Classroom
Expectations



Bus Club
Be sure to reach out to Mrs. David or Mrs. Graves if you have students that need extra support on the bus!

SPARTAN HEADS—Keep giving those class compliments for our last surprise party of the school year

Data for Referrals:

- Most Referrals
- -Disrespect/Defiance (8 total)
- Bus (7 total)
- Review Week

Focus on: classroom expectations!

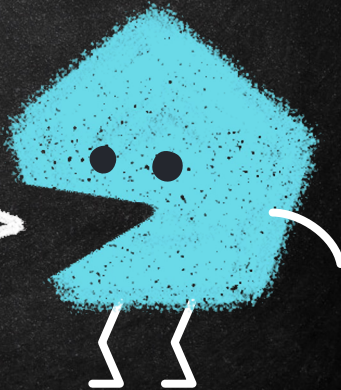
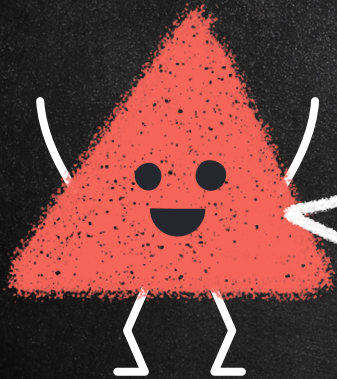
As an elementary school teacher, when I need to fart




Morning Meetings— Be sure to include the four components to your morning meetings...

Greeting, Sharing, Activity, and Morning Message

WOW! So everyone knows what's going on?

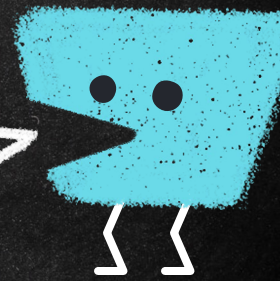


BIG 5 DATA... SAY WHAT?!?! 7

A yellow, textured, circular character with a simple smile and two thin legs.

So I've heard some teachers talking about the Big 5. That's a new movie right?

Wait, we have a car?

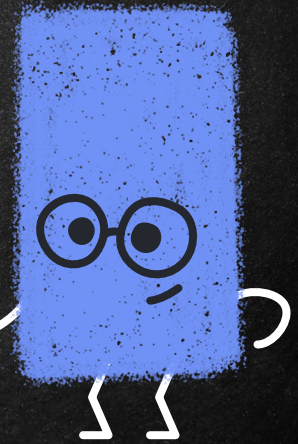
A blue, textured, rectangular character with two black dots for eyes and two thin legs.

What you talkin' bout Willis? That's where we get our information to help us drive our decisions.

THE BIG 5 BREAKDOWN

March PBS Data

Let's Analyze the Data! Everything you need is right here!



WHAT DO WE DO NOW? – REVIEW WEEK

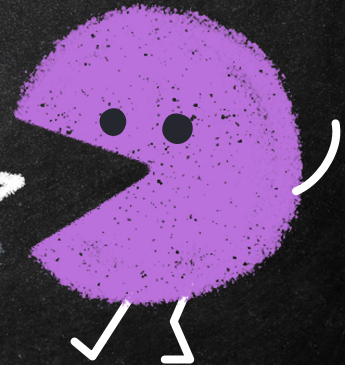
MONDAY: RESPECT BUS LESSON

TUESDAY: RESPONSIBLE BUS LESSON

WEDNESDAY: SAFE BUS LESSON

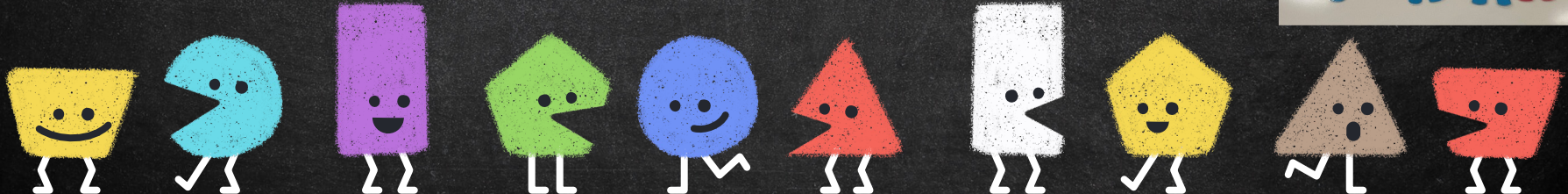
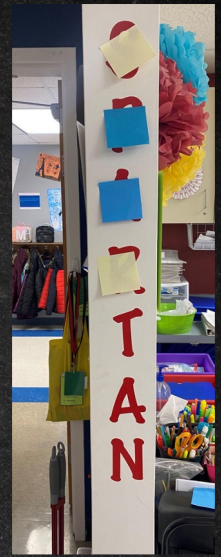
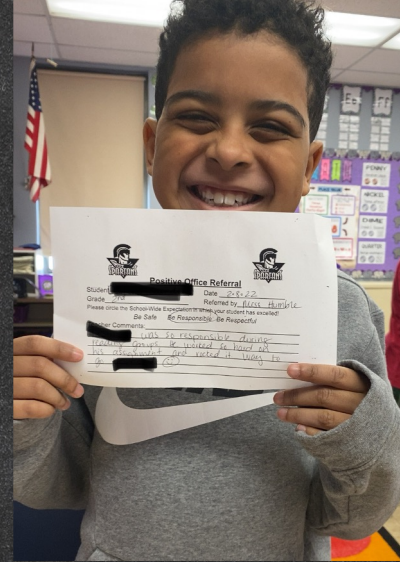
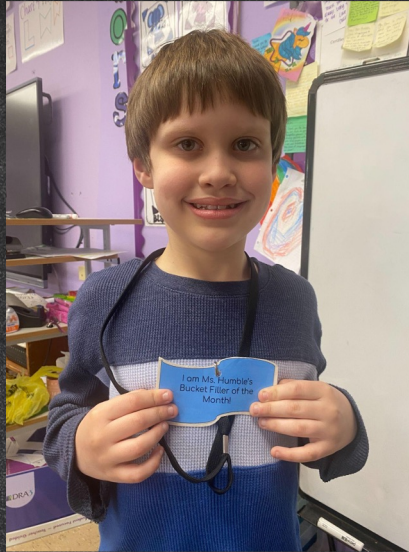
THURSDAY: REVIEW VIDEOS TO WATCH AND REVIEW WITH THE CLASS.... RIDING THE BUS SOCIAL STORY *(DISCUSS SEATBELT)*
RIDING THE BUS AT SOUTH PARK

FRIDAY: SOCIAL SKILL #4 (SELF TALK FOR LEARNING)



How do we engage the students?

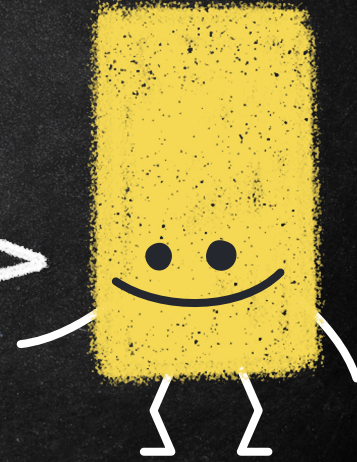
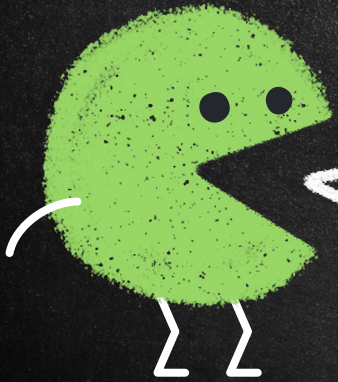
- Class Compliments
- Spartan Head
- PBS PARTY!
- Positive Office Referral
- Leadership Team
- Bucket Fillers
- Lunchroom-STAR
- Music on Fridays
- PBS Daily Lessons
- Videos
- Morning Meetings
- Daily Pledge/Mission Statement



Calm Down Kits
Calm Down Area
Sensory Walk
Buddy Rooms



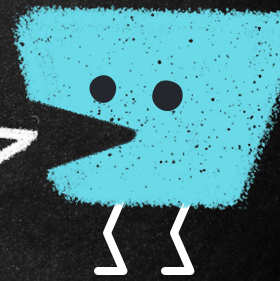
Sensory Room



STOP! COUNSELOR TIME!

“Where does the counselor fit into all this?”

- Tier 1 PBS Coach
- Classroom Lessons
- Social Skills Groups
- Individual Counseling
- Small Group Counseling
- Weekly Check-ins
- Observations of Students
- Bus Club



HOCUS POCUS EVERYBODY FOCUS

“What’s a Focus Room?”

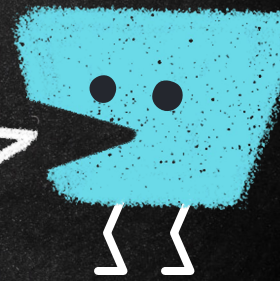
“So students just go there to play?”

“What social skills to they learn?”


“A focus room is a safe area for students to take a break to refocus before going back to class.”

“Sometimes, that is what they need to do. Some students do social skills lessons there, too!”

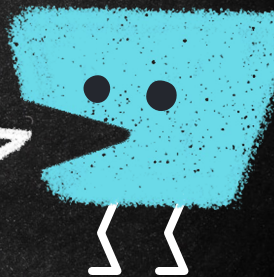
“Students learn to identify and regulate their emotions, and problem solving skills. They learn how to be better students and better friends.”



BEHAVIOR COACH

A yellow, textured, circular character with two black dots for eyes and a simple curved line for a smile. It has two thin white legs.

“You mean there’s a coach for behavior?”

- 
- A blue, textured, rectangular character with two black dots for eyes and a simple curved line for a smile. It has two thin white legs.
- Provide professional development for staff
 - Create Classroom Success Plans
 - Meet regularly with teachers to analyze behavior data and develop strategies
 - Network with Resource Coordinators, Focus Facilitators and other outside support agencies

TRAUMA TEAM

Restorative Circles

Minute Meetings

Positive Student-Staff Relationships

Kindergarten

- Katelyn Gilbert Kindergarten Web Page
- Tory Foster Kindergarten Web Page
- Alicia Downing Kindergarten Web Page
- Amanda Estick Kindergarten Web Page
- Natalie Owens 1st Grade Web Page
- Michelle James 1st Grade Web Page
- Breah Hulet 1st Grade Web Page
- Kaitlin DeVries 1st Grade Web Page

1st grade

2nd grade

- Jennifer Holcomb 2nd Grade Web Page
- Monica Miller 2nd Grade Web Page
- Jennifer Garratt 2nd Grade Web Page
- Jarvis Daniels 2nd Grade Web Page
- Anna Nordmeier Principal
- Tina LaBeaux Secretary
- Samantha Audon Building Aide
- Brenda Ayers Nurse LPN

office

Nurse

specials

- Amelia David Counselor Web Page
- Brian Kitcher Librarian Web Page
- Jennifer Barnett Library Aide
- Melissa Vestal Librarian Web Page
- Lacy Cannon-Hicks 1st Web Page
- Coree Steppert
- Callie Will Interventionist Web Page
- Lorin Espedal Interventionist Web Page

Title

speech

Focus Room

- Heleen Burroughs Speech Language Pathologist Web Page
- Ashley Strawn Focus Room Facilitator

special services teachers

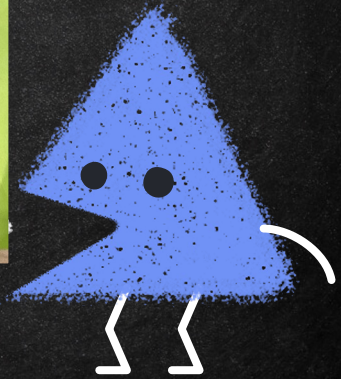
- Alminda Swanson Special Services Web Page
- Wanda Anderson Special Services Web Page
- Gina LaScola Special Services Web Page

custodians

- Jarry Plank Custodian
- Ma'lye Tucker Custodian

Building Aides and SS Aides

- Rhonda Ouel Special Services Aide
- Karson Kim Special Services Aide
- Melissa Garcia Special Services Aide
- Amber Bohase Special Services Aide
- Joyce Bauer Special Services Aide
- Bethany J. Inbeaux Special Services Aide
- Bronxy Niess Full Time Substitute Teacher
- Juanita Vega Special Services Aide
- Kimberly Meisinger Building Aide



ROADMAP

Evaluate
Monthly Data

Review Weeks

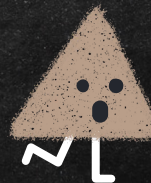
Make it Fun



Get Key Players
Involved

Set your
Destination

Continue
Growing





SOUTH PARK ELEMENTARY

CONTACT INFORMATION:

ANNA NORDMEYER-PRINCIPAL

ANNANORDMEYER@MOBERLYSPARTANS.ORG

JESSICA DAVID-COUNSELOR

JESSICADAVID@MOBERLYSPARTANS.ORG

JESSICA GROSS-BEHAVIOR SPECIALIST

JESSICAGROSS@MOBERLYSPARTANS.ORG

