

MISSOURI SW-PBS SUMMER INSTITUTE

TAN-TAR-A CONFERENCE CENTER • OSAGE BEACH, MISSOURI • JUNE 1-2, 2022

NOT ALL HEROES WEAR CAPES!



Session 3B: Districtwide Data-Based Decision-Making



MU Center for SW-PBS
College of Education &
Human Development
University of Missouri



Daniel Rector

*Statewide Coach / District
Facilitator
MO SW-PBS*

Former Science Teacher

Former MS/Jr. HS Administrator

Former RPDC School Improvement
Consultant

Adjunct Professor (*Classroom &
Behavior Management*)

National & State Presenter

E-mail: RECTORDL@MISSOURI.EDU



MU Center for SW-PBS
College of Education &
Human Development
University of Missouri





Dr. Tim Roth

Assistant Superintendent
Southern Boone R-1 School District
E-mail: TROTH@ASHLAND.K12.MO.US



Karen Pfingsten

School Improvement Coordinator
Southern Boone R-1 School District
E-mail: KPFINGSTEN@ASHLAND.K12.MO.US



Southern Boone School District

Excellence in Learning for All



District Demographics*

Buildings: 4
PK-12 Enrollment: 1800
Race/Ethnicity: 90% White
FRPL: 16%

SPED: 9.4%
Certified Staff: 160

**2020-2021 Data*



MU Center for SW-PBS
College of Education &
Human Development
University of Missouri



Today's Outcomes...

- Hear representatives from an exemplar school district explain how they use data to inform decision-making.

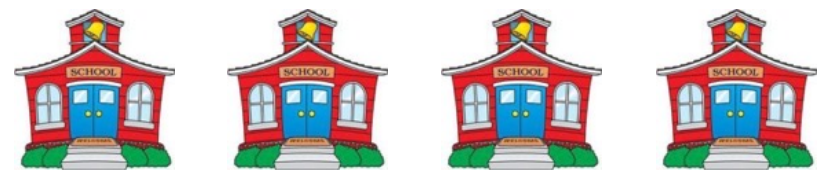
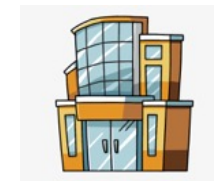


District-wide Implementation Logic

the theory behind why we do what we do...

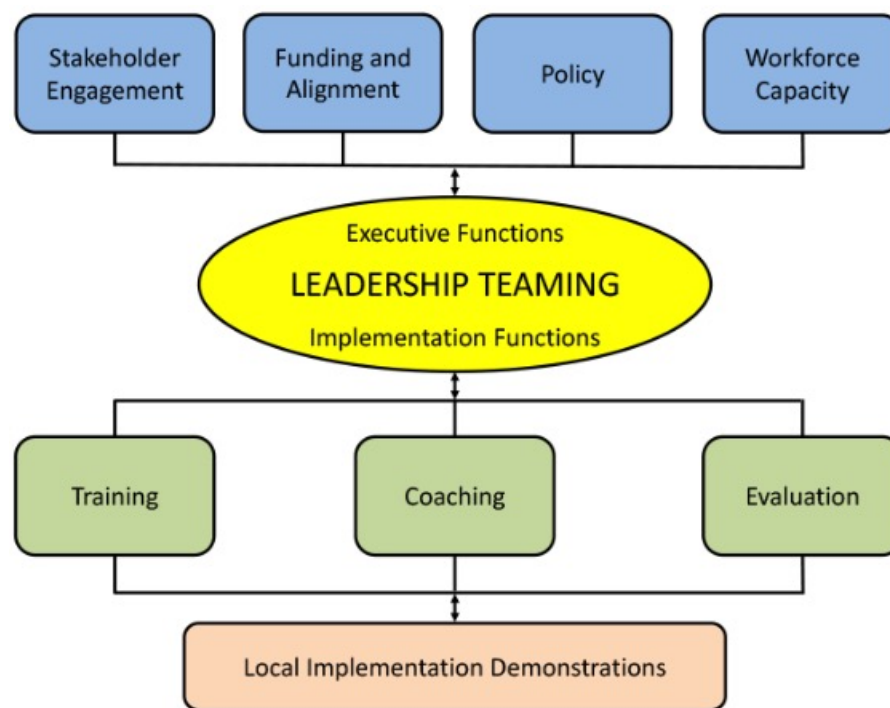
Reasons for Districtwide Implementation

- PBIS implementation is more successful when it is supported by district-level systems.
- By supporting multiple schools in the same area, districts can create a shared vision, language and experience that makes everything more effective.

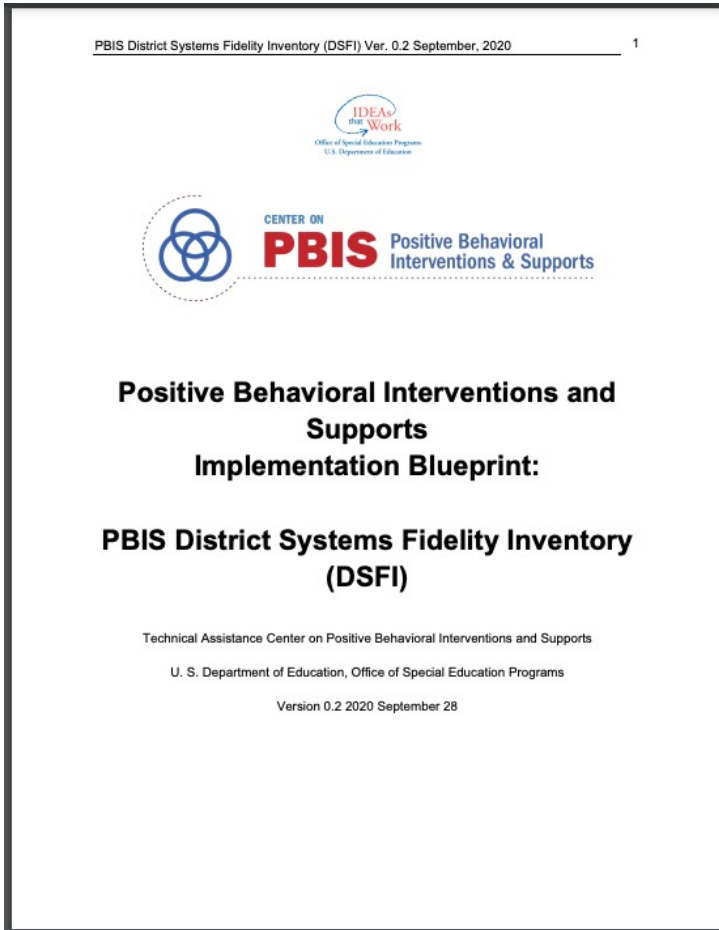


Components of Districtwide Implementation

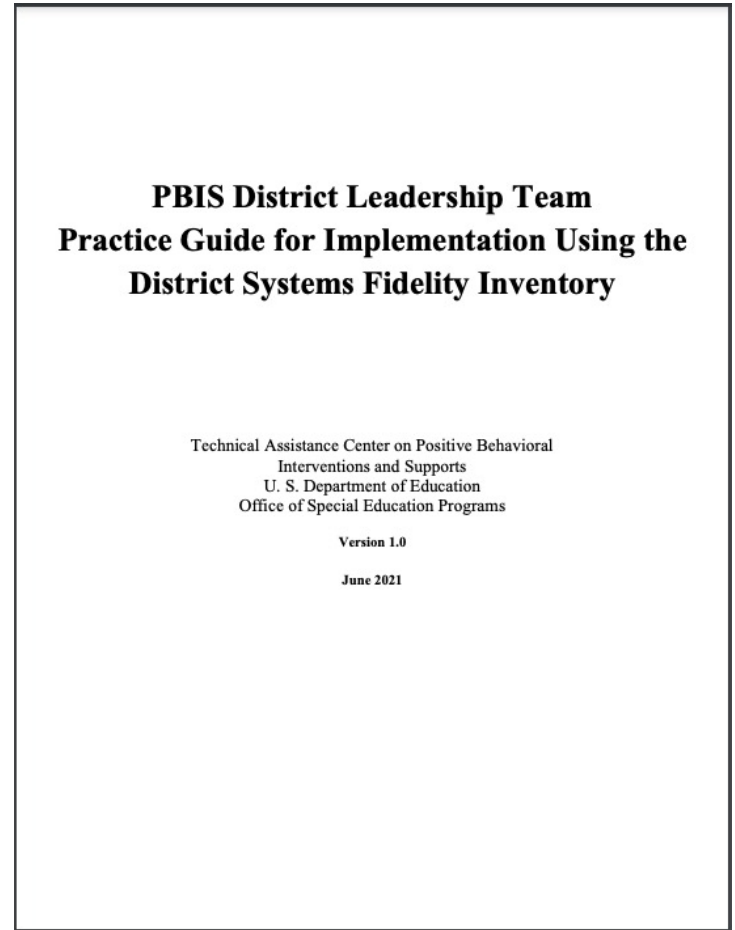
- Leadership team to actively coordinate implementation efforts.
- Adequate funding, broad visibility, and consistent political support.
- Support local/site implementation through training, coaching, and on-going evaluation.



Districtwide Implementation Resources



[District Systems Fidelity Inventory](#)



[District Leadership Team Practice Guide](#)



MU Center for SW-PBS
College of Education &
Human Development
University of Missouri



MO SW-PBS Journey



Southern Boone School District

Excellence in Learning for All

- Southern Boone has been connected to MO SW-PBS since at least the 2006-2007 school year.
- District focus to do MO SW-PBS; site-based implementation supported by RPDC.
- Varying states of implementation:
 - Elementary & primary buildings – gold recognition for 13 years.
 - Middle & high buildings – cycles of start and stop



MU Center for SW-PBS
College of Education &
Human Development
University of Missouri

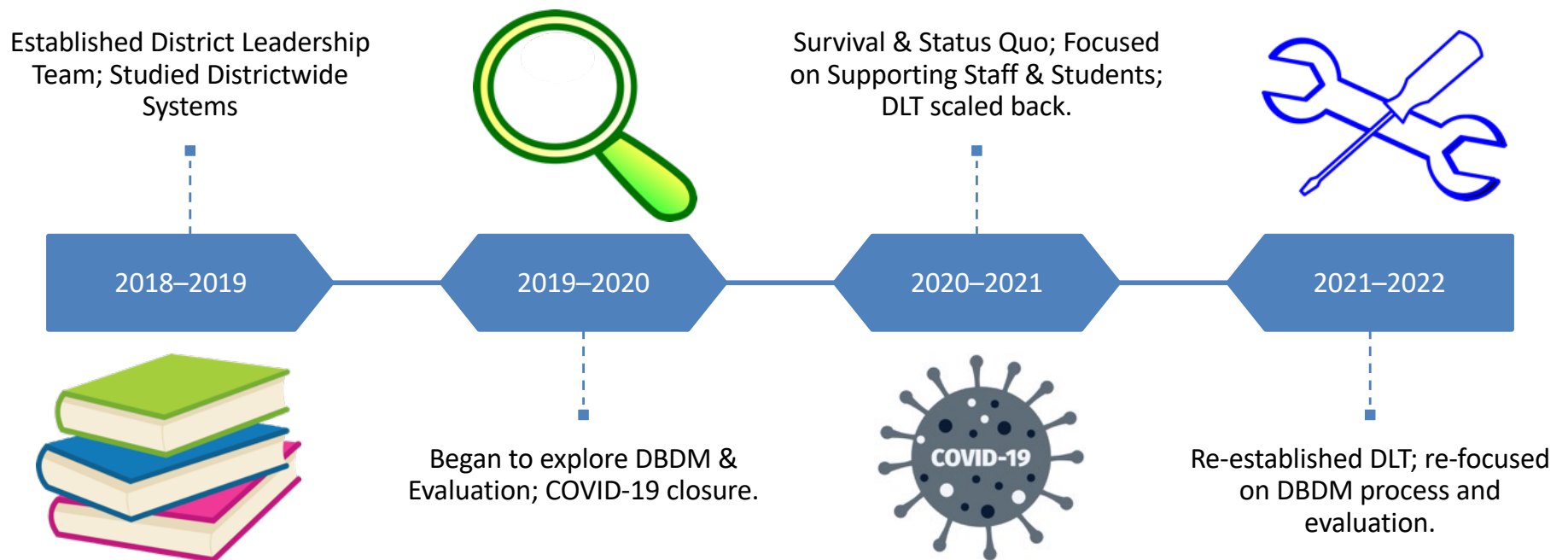


MO SW-PBS Journey



Southern Boone School District
Excellence in Learning for All

- Focused district-wide approach during 18-19.



2021-2022 Leadership Team Focus Area

To determine what supports schools need, we committed to answering the following questions:

- How well are we implementing MO SW-PBS across the district?
- How well are we impacting our intended outcomes?



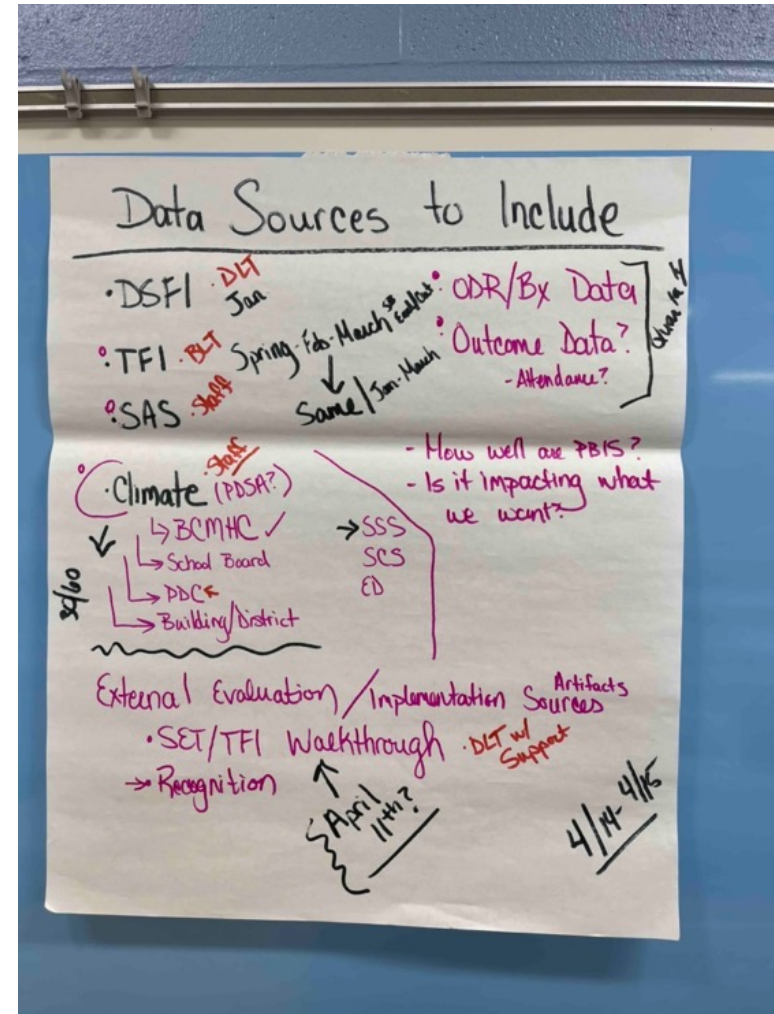
MU Center for SW-PBS
College of Education &
Human Development
University of Missouri



Data Audit

We first had to determine what data we felt could answer our questions and inform our decision-making.

- We started by exploring what PBIS implementation and outcome data each school is collecting and what the data does/does not tell us.
- We then explored what other data would help inform our decision-making process.



Data Collection Schedule

We decided on the data sources that would be collected by every building.

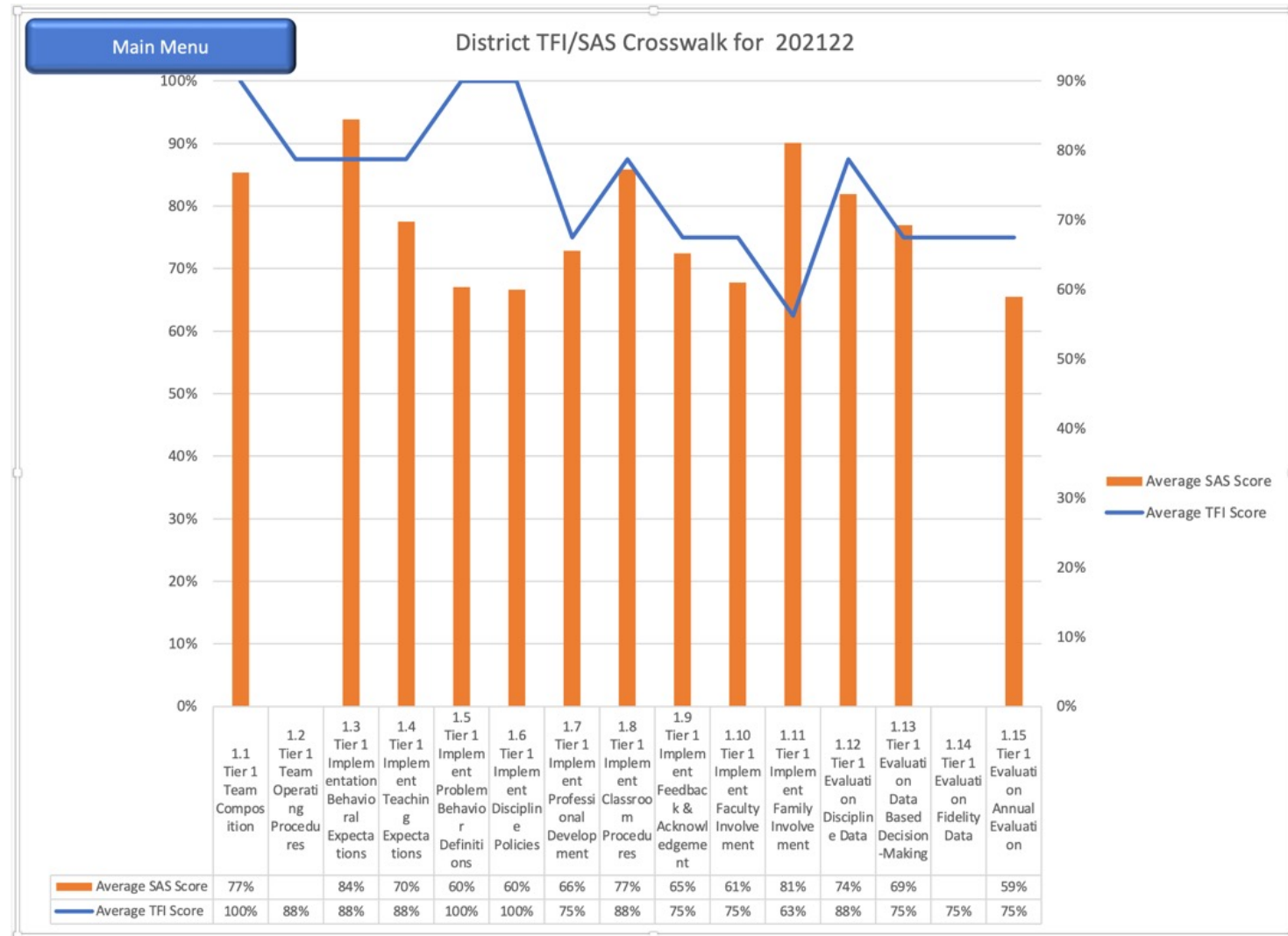
We incorporated these data sources into our district's data collection and assessment matrix.

We established data collection windows, being mindful of when the data would be useful and when other events were occurring.

	August	September	October	November	December	January	February	March	April	May
Staff and Students			Mental Health Checklist				Mental Health Checklist		Mental Health Checklist	
Staff and Students Cont.										
Selected Stakeholders			Climate Survey	External Evaluation (SET/TFI)						
Selected Stakeholders Cont.										
All Staff						SAS			Selected ETLPs	
All Staff Cont.							SAS	SAS		
DLT Team			Quarterly Data			Quarterly Data DSFI		Quarterly Data DSFI		Quarterly Data
DLT Team Cont.							DSFI	DSFI		
Tier Teams							TFI (I, II, and III)			
Tier Teams Cont.								TFI (I, II, and III)		

Data Dive – TFI & SAS

Piloting our data collection schedule to drive data-based decision-making.



Data Dive – TFI Walkthrough & SET-Like Tool

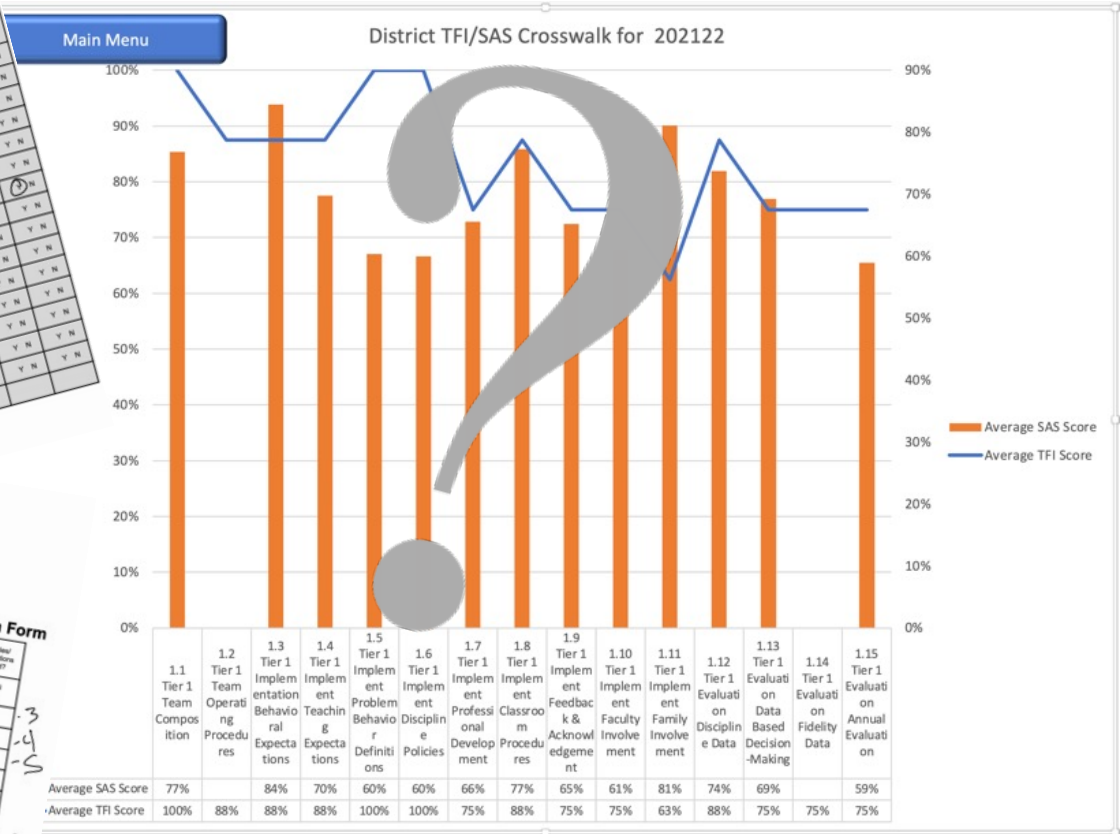
Staff Interview Form
Interview a minimum of 10% or at least 10 staff members

Student Interview Form
Interview a minimum of 10 students

Observation Form

General Notes from Staff Interviews:

General Notes from Observations:

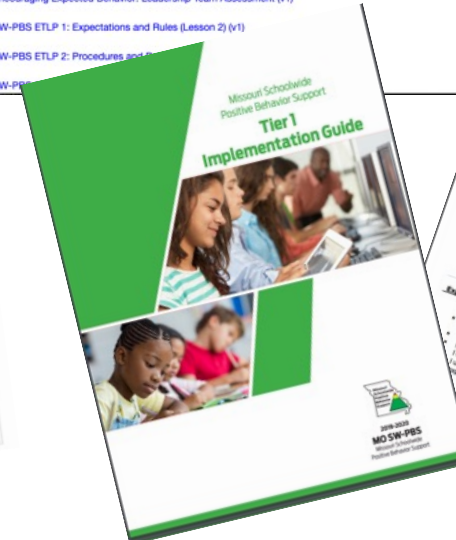
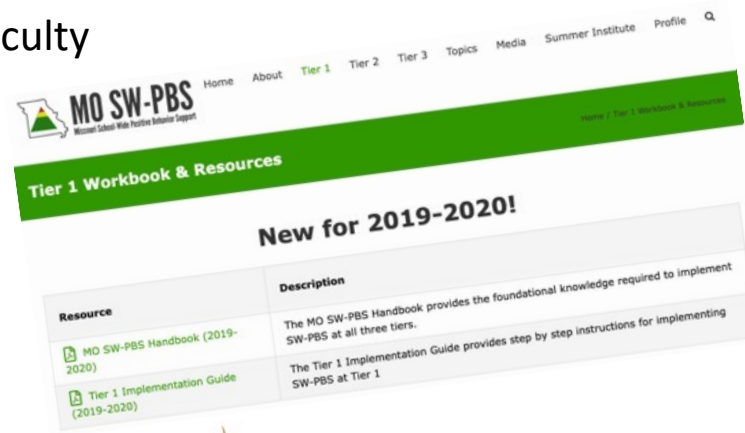
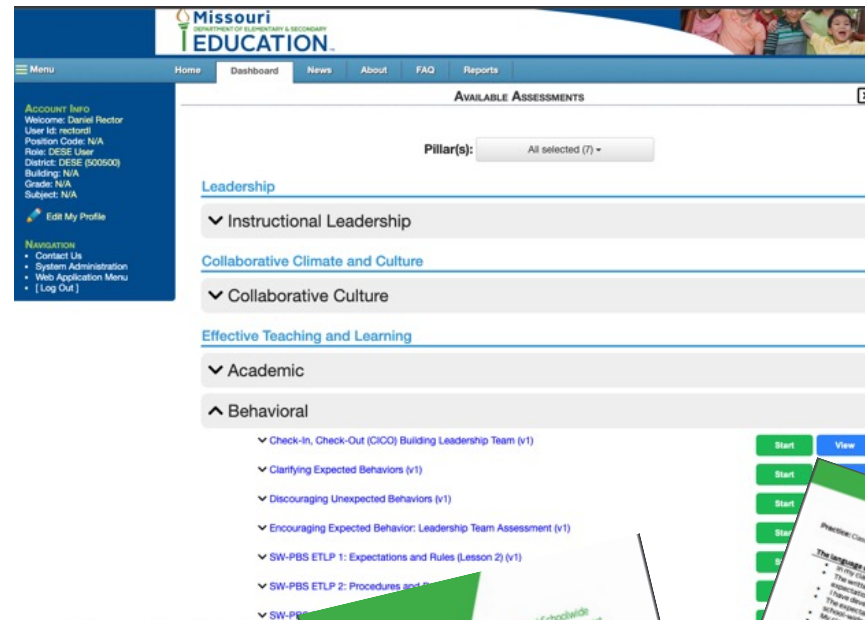


Data Dive – ETLP Self-Assessments

(aka the Effective Classroom Practices or the Classroom Great 8)

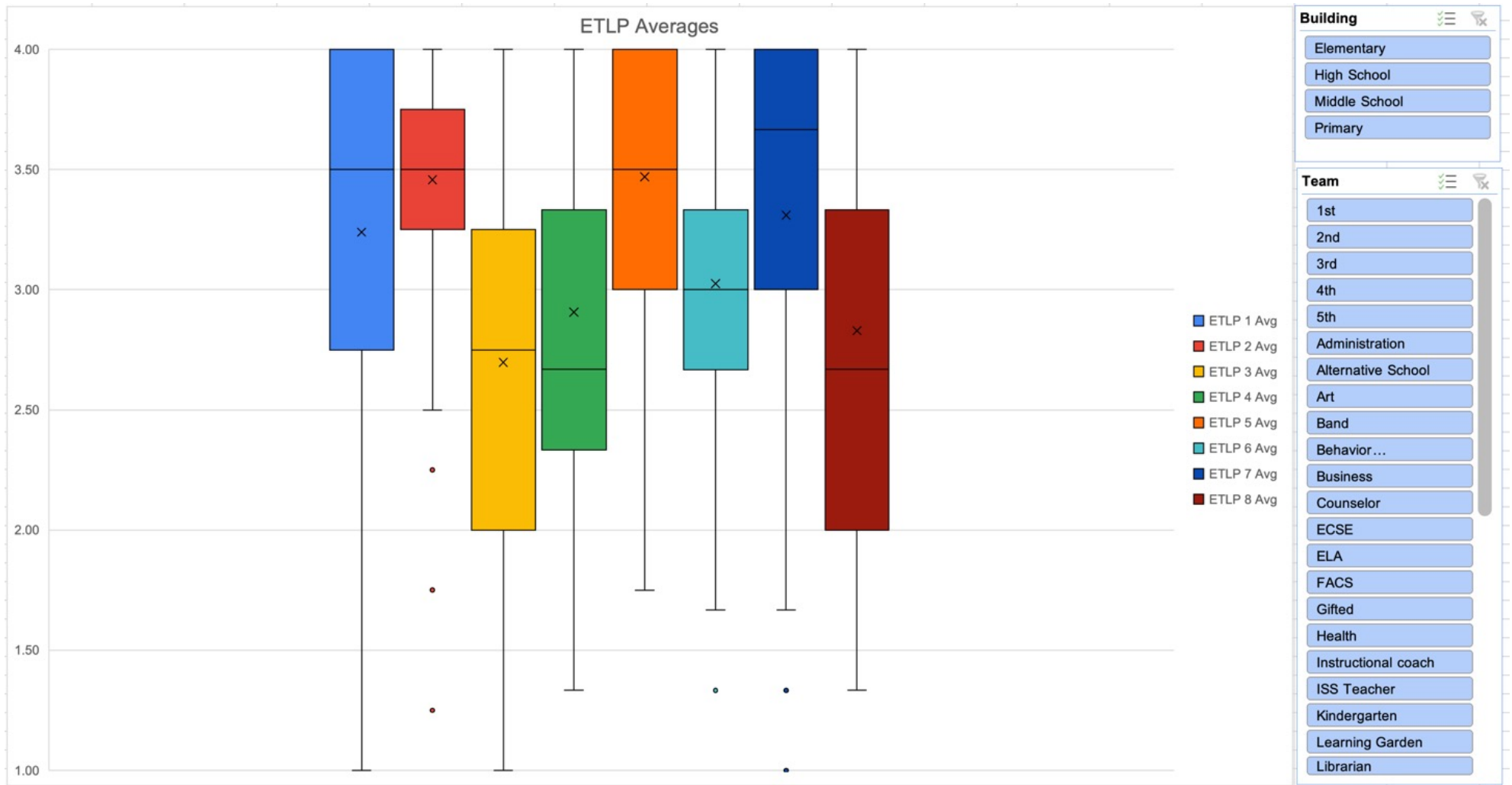
ETLPs

- Expectations & Rules
- Procedures & Routines
- Encouraging
- Discouraging
- Active Supervision
- Opportunities to Respond
- Activity Sequencing & Choice
- Task Difficulty



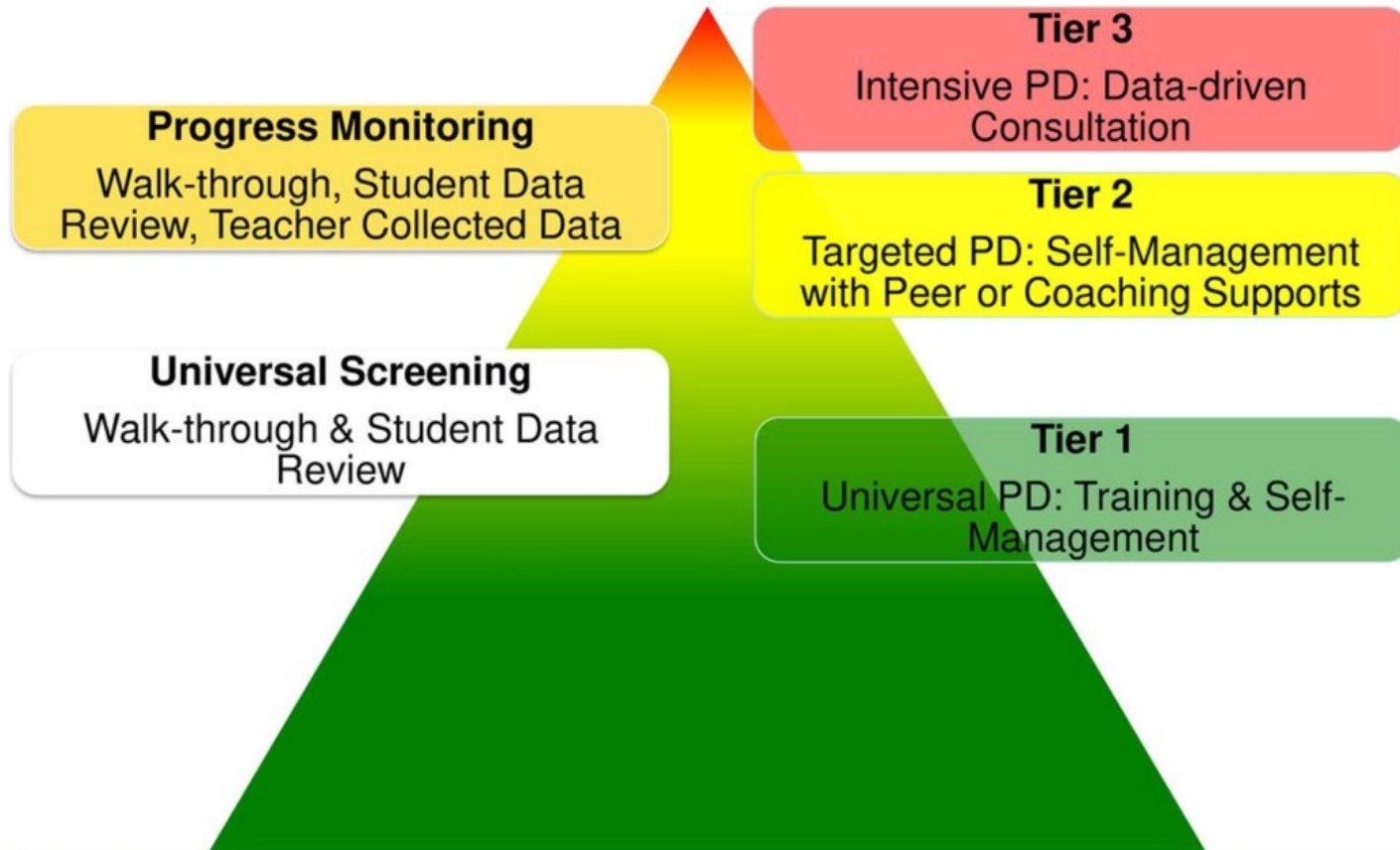
Data Dive – ETLP Self-Assessments

(aka the Effective Classroom Practices or the Classroom Great 8)



Potential Systems Focus for Next Year

Multi-tiered Framework of Professional Development Support



How can we better support (training, coaching) the varying needs of our educators implementing MO SW-PBS?

Questions?

