

# Welcome to Missouri Schoolwide Positive Behavior Support (MO SW-PBS) Summer Institute 2021

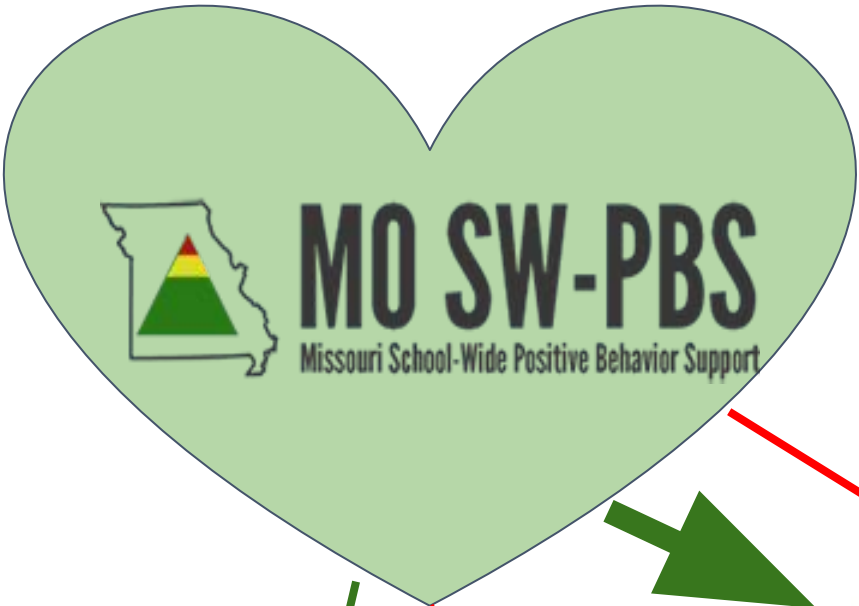
Summer Engagement Series:  
June 9-10 EQUITY  
June 16-17 DATA  
June 23-24 SCHOOLWIDE  
June 30-July 1 DISTRICT WIDE

MO SW-PBS SUMMER INSTITUTE



## WELCOME

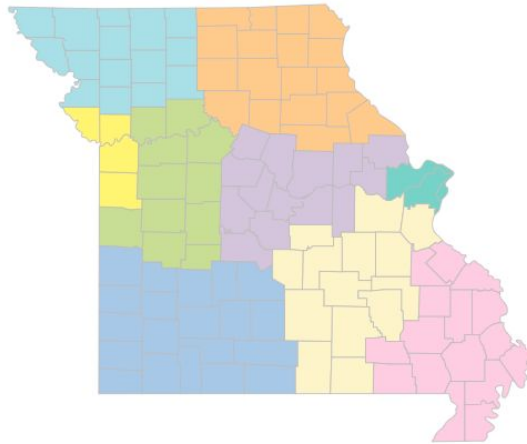
# Who Are We?



Center for Schoolwide  
Positive Behavior Support  
University of Missouri

### Missouri RPDCs

- Southeast - Cape Girardeau
- Heart of Missouri - Columbia
- Kansas City
- Northeast - Kirksville
- Northwest - Maryville
- South Central - Rolla
- Southwest - Springfield
- St. Louis
- Central - Warrensburg
- MO SW-PBS
- MU Center for SW-PBS



CENTER ON  
**PBIS** Positive Behavioral  
Interventions & Supports

# Who are We?



**Maria Allen**  
SW-PBS Consultant



**Debora Lintner**  
SW-PBS Consultant



**Cindy Rodgers**  
SW-PBS Consultant



**Christie Lewis**  
SW-PBS Consultant



**Sherri Thomas**  
SW-PBS Consultant



**Jeff Freeland**  
SW-PBS Consultant



**Kathy Growney**  
SW-PBS Consultant



**Emily Howell**  
SW-PBS Consultant



**Christi Rice**  
SW-PBS Consultant



**Sandy Daniels**  
SW-PBS Consultant



**Carolyn Hall**  
SW-PBS Consultant



**Karen Wigger**  
SW-PBS Consultant



**Jeanie Carey**  
SW-PBS Consultant



**Debra Jones**  
SW-PBS Consultant



**Rebecca Roberts**  
SW-PBS Consultant



**Susanna Hill**  
SW-PBS Consultant



**Jordan Politte**  
SW-PBS Consultant



**Andrea Rockney**  
SW-PBS Consultant



**Joseph Beydler**  
SW-PBS Consultant



**Nancy Rogers**  
SW-PBS Consultant



**Deb Childs**  
SW-PBS Consultant



**Jeff Burkett**  
SW-PBS Consultant



**Lindsay Schmidt**  
SW-PBS Consultant



**Shaw-Hoon Teo**  
SW-PBS Consultant



**Karen Westhoff**  
SW-PBS Consultant



**Jody Baker**  
Statewide Coach



**Christine Croll**  
Statewide Coach



**Nanci Johnson**  
State Director



**Laura Shaw**  
Statewide Coach



**Gordon Way**  
Web and Data Consultant

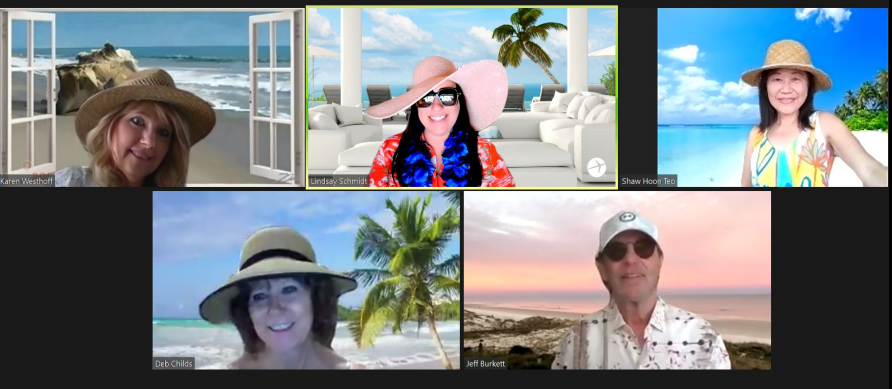


**Daniel Rector**  
Statewide Coach



# WELCOME

# Who Are We?



# Mission, Vision and Values

## **“Why do we exist?”**

The mission of MO SW-PBS is to facilitate the building capacity of all Missouri schools and districts to establish and sustain a research-based, multi-tiered behavioral framework that supports positive outcomes for all students.

## **“What do we hope to become?”**

The vision of MO SW-PBS is for Schoolwide Positive Behavior Support to be the behavioral framework that all Missouri schools and districts implement with consistency, fidelity, and equity.

## **“What do We Value?”**

**POSITIVITY \* GROWTH**

**EQUITY \* RESEARCH**

# **WELCOME**



# What Do We Do?

- Provide training, coaching and technical assistance to partner building leadership teams (BLTs).
- Provide training, coaching and technical assistance to partner district leadership teams (DLTs) implementing the District Continuous Improvement for Behavior (DCI-B) framework.
- Develop training materials for BLTs and DLTs to use in Tier 1, 2 and 3 supports.
- Maintain a website, produce newsletters, host an Annual Summer Institute ...

...and so much more!

# WELCOME



# How We Get it Done!

## The Cascade Model of Support

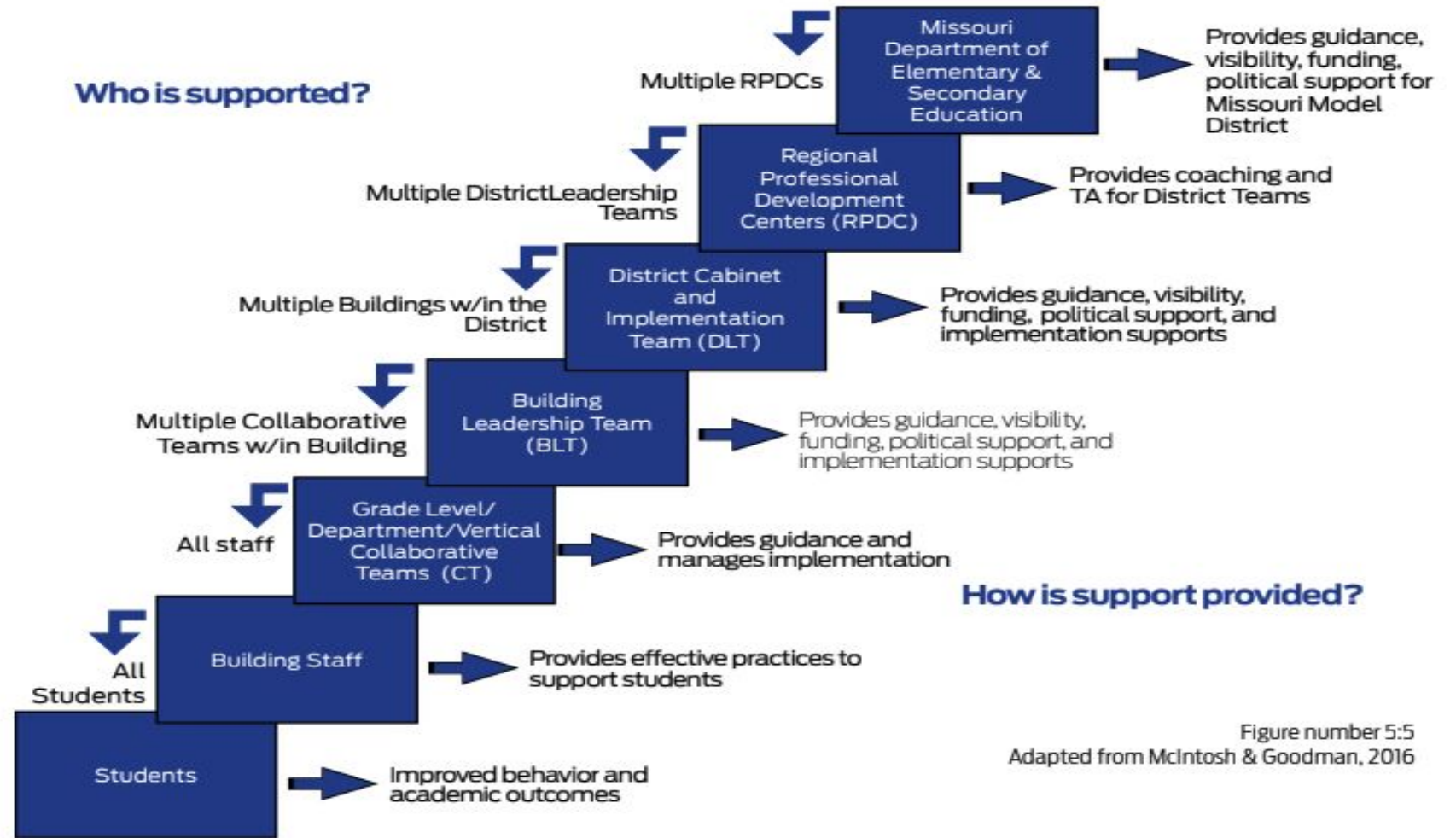


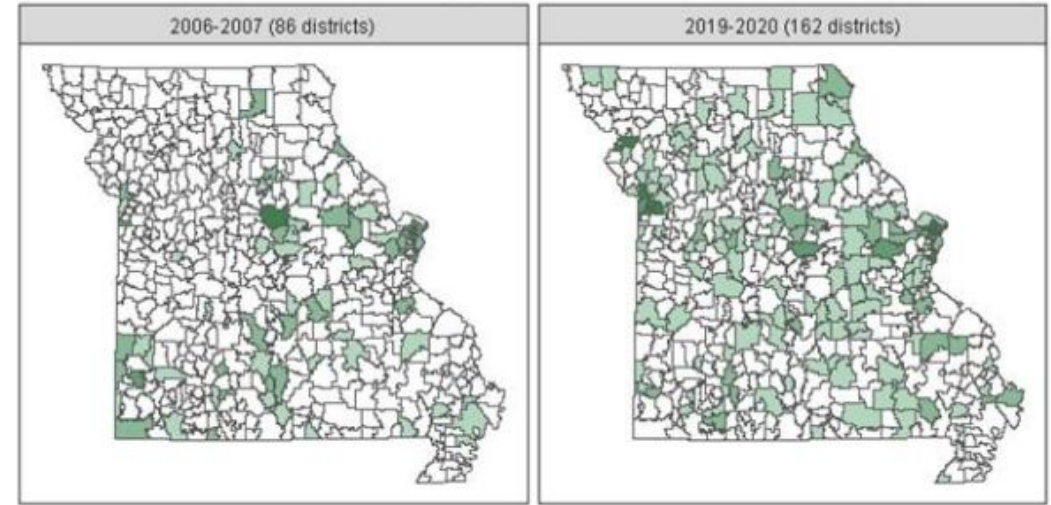
Figure number 5:5  
Adapted from McIntosh & Goodman, 2016

# WELCOME

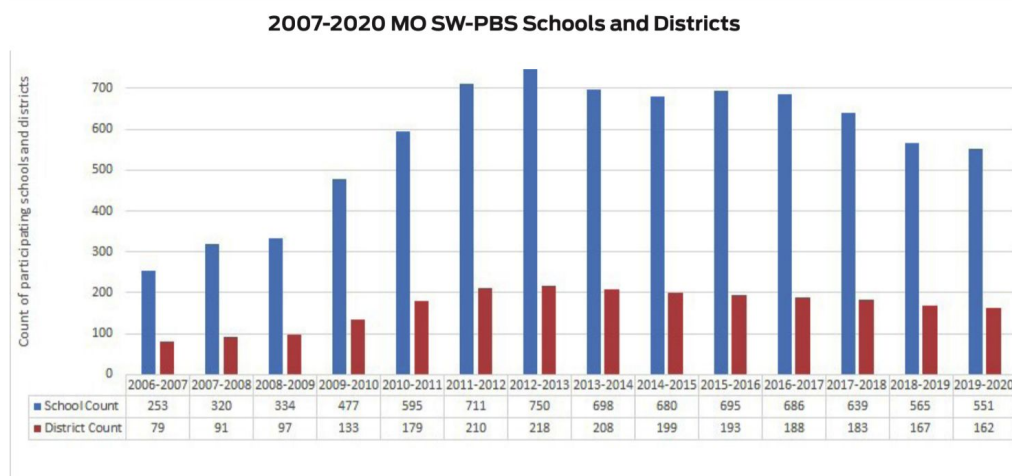
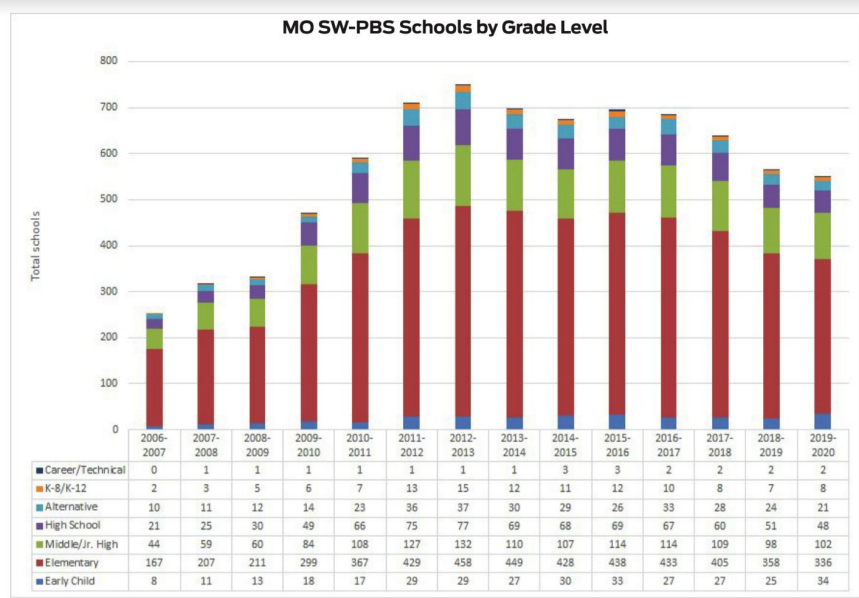


# Who Do We Serve?

Missouri SW-PBS School Counts by Districts



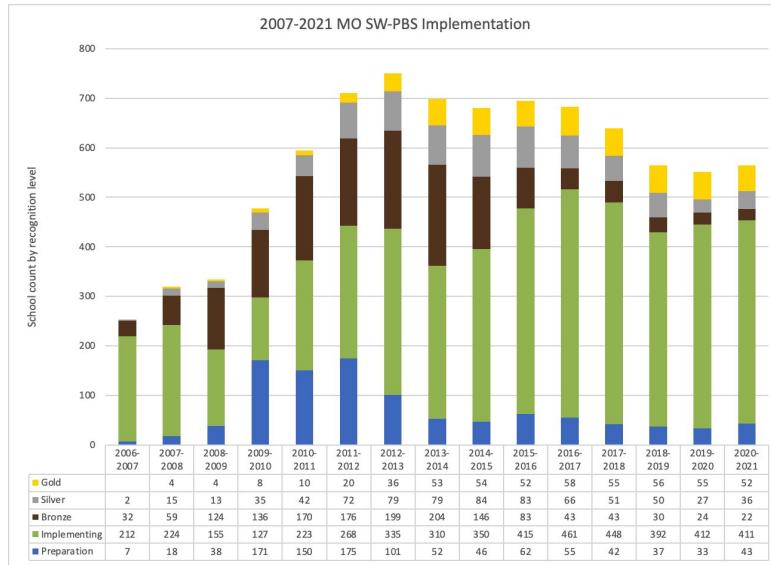
Number of active PBS schools: 0 (white), 1-2 (light green), 3-6 (medium green), 7-10 (dark green), 11-30 (darkest green)



**WELCOME**

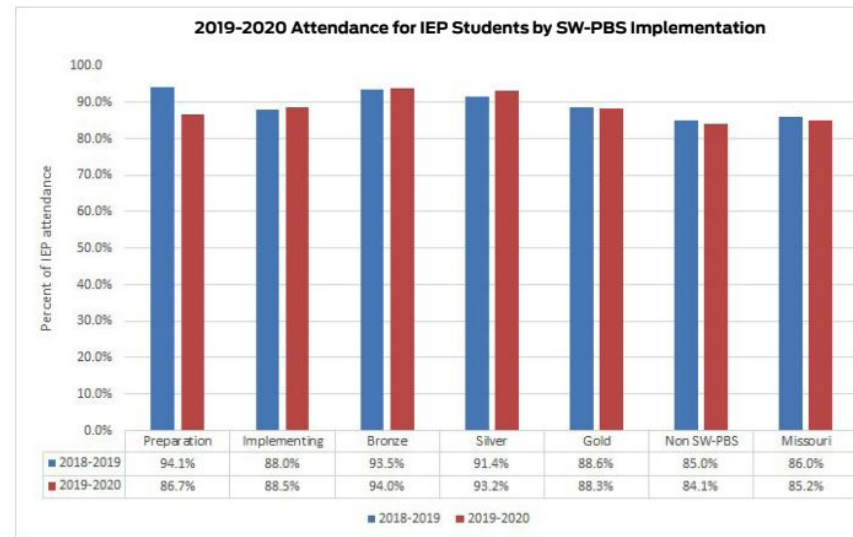


# What Are the Impacts of Our Collaboration?



## FIDELITY MATTERS!

Attend the Data Keynote with Dr. Heather Hatton to learn outcomes of a new analysis on June 16th at 9:00AM CST!



MO SW-PBS SUMMER INSTITUTE



# WELCOME

# MO SW-PBS Award of Recognition 2021



- GOLD LEVEL = Fidelity of Tiers 1, 2 & 3 = 52 Schools
- SILVER LEVEL = Fidelity of Tiers 1 & 2 = 37 Schools
- BRONZE LEVEL = Fidelity of Tier 1 = 22 Schools
  
- In 2021 8 schools joined 24 others in reaching 10 years of SW-PBS Recognition!
  
- Two schools received their 15th year of Recognition in 2021
  - **Saegar Middle School**, Francis Howell School District
  - **Westchester Elementary**, Kirkwood School District



## WELCOME

# Summer Institute 2021 - Choose Your Adventure

- SI 2021 is 4 “themed’ weeks >
  - EQUITY - June 9-10
  - DATA - June 16-17
  - SCHOOLWIDE - June 23-24
  - DISTRICTWIDE - June 30-July 1
- Choose all ALL ACCESS PASS for all 4 weeks, or register by the week, all resources are live ON DEMAND at [pbissmissouri.org](http://pbissmissouri.org)
- Weekly offerings
  - KEYNOTES > kick off the week with research and exemplars
  - BREAKOUTS > application examples & opportunities to interact
  - VISIONING LABs > bringing it all together with networking & small groups



# WELCOME