

Welcome to
SCHOOLWIDE & CLASSROOM WEEK!
June 23-24

**MISSOURI SW-PBS
SUMMER INSTITUTE**

VIRTUAL CONFERENCE
SUMMER 2021



THANK YOU FOR JOINING
US

Session 2 – A Renewed
Beginning: The Husky
Way

Begins at 1:15 p.m.

Tweet about your
experience!

#SI2021

Welcome to
**SCHOOLWIDE &
CLASSROOM WEEK!**
June 23-24

MO SW-PBS SUMMER INSTITUTE



- Keep cameras off
- Keep mics muted
- Participate during engagement opportunities when offered
- Limit use of Chat feature unless otherwise instructed

Tweet about your experience!

#SI2021

If you lose connection during the session, go to pbissmissouri.org and log back in.



Welcome!

Region 5 Northwest RPDC

Karen Wigger- Tier 1 Consultant

Carolyn Hall- Tier 2 & 3 Consultant

SCHOOLWIDE/CLASSROOM

MO SW-PBS SUMMER INSTITUTE

ROOTING FOR EACH OTHER!

TEAMS



WHO IS IN THE ROOM?

Administrator

Early Childhood
Teacher

Elementary
Teacher

Secondary
Teacher

Special Education
Teacher

Support Staff



SCHOOLWIDE/CLASSROOM

A New Beginning: The Husky Way



Jennifer Burns: Home-School Coordinator - jennifer.burns@dese.mo.gov

Mark Wheatley: Building Principal - mark.wheatley@dese.mo.gov

SCHOOLWIDE/CLASSROOM



Session Outcomes

- **Engage staff in the benefits of PBS**
- **Mold the PBS model into an effective one for students with significant developmental disabilities**
- **Utilize peer collaborative practices to engage staff in program fidelity**
- **Create a student support team driven by data**
- **Implement strategies to address PBS skill development for distance learners**



SCHOOLWIDE/CLASSROOM

Helen Davis State School

Missouri Schools For The Severely Disabled

- **One of 34 schools across the state**
- **Approximately 50 students with complex physical and cognitive delays**
- **9 classrooms**
- **35 Certified and Support staff**
- **Helen Davis has been a PBS School Since Fall of 2010**

SCHOOLWIDE/CLASSROOM



Helen Davis Mission Statement

We will utilize school-wide positive behavior supports to create an educational environment which promotes:

- **Consistent responses**
- **Safety**
- **Positive social interactions**
- **Student learning**

SCHOOLWIDE/CLASSROOM

MO SW-PBS SUMMER INSTITUTE



It's True:

SW-PBS Is more about the adults' behavior than it is about the students' behavior

Each organization must evaluate itself before it can attempt to create change!



MO SW-PBS SUMMER INSTITUTE



SCHOOLWIDE/CLASSROOM

It was time for a reality check...

Review of Tiered Fidelity Survey (TFI) Data

Show-Me the Proof!

Scoring Criteria:

0 - Not Implemented

1 - Partially

Implemented

2 - Fully Implemented

Helen Davis Average Score

2017-2018

.93



SCHOOLWIDE/CLASSROOM

Action Plans Take Shape



- **Big Picture**
 - **Make Sure Lesson Plans are Being Taught**
 - **Use Collaboration with All Staff to Re-Define Key Needs**
 - **Classroom Look-fors**
 - **Involve Parents and Seek Feedback**
 - **Parent/Staff Survey**
- **Identify and Train the Leadership Team**
 - **Support From NW-RPDC - Re-Connect Training**



SCHOOLWIDE/CLASSROOM

Action Plans Take Shape (Cont.)



- **Breakdown data from multiple sources**
 - **Self Assessment Survey (SAS)**
 - **Student ODR data**
 - **Target Interventions and PD based on multiple data sources**
 - **Student Care Team - who, when, how**
 - **SPF**
 - **Direct and Indirect Strategies for Responding to Inappropriate Behavior (Staff and Student)**
 - **Child Behavioral Study Team**



SCHOOLWIDE/CLASSROOM

Action Plans Take Shape (Cont.)



- **Focus year-long professional development and peer collaboration keyed to the data**
 - **Implement PD with fidelity**
 - **Hold each other accountable for implementation**
- **Re-evaluate and reassess**
- **Have fun with continual staff and student learning**
 - **Recognize, Reinforce and Celebrate (Culture)**
 - **Individual - Paw Store & Terrific Kid Awards**
 - **Classroom - Whole Class Incentives**
 - **Whole School - Golden Paw Celebrations**
 - **Parent and Staff Recognition**



SCHOOLWIDE/CLASSROOM

It was time for a reality check...

Review of Tiered Fidelity Survey (TFI) Data

Show-Me the Proof!

Scoring Criteria:

0 - Not Implemented

1 - Partially

Implemented

2 - Fully Implemented

Helen Davis Average Score

2017-2018

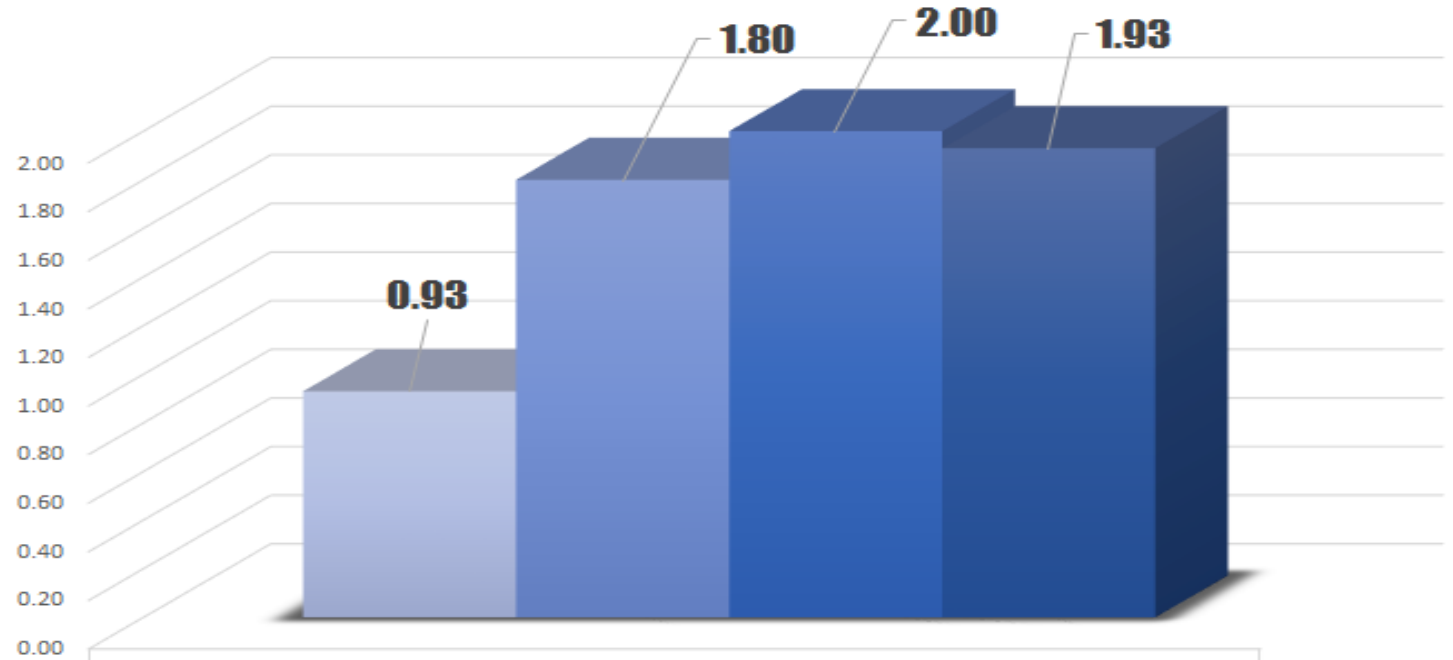
.93



SCHOOLWIDE/CLASSROOM

Our New Reality

Multiyear Comparison Tiered Fidelity Helen Davis School



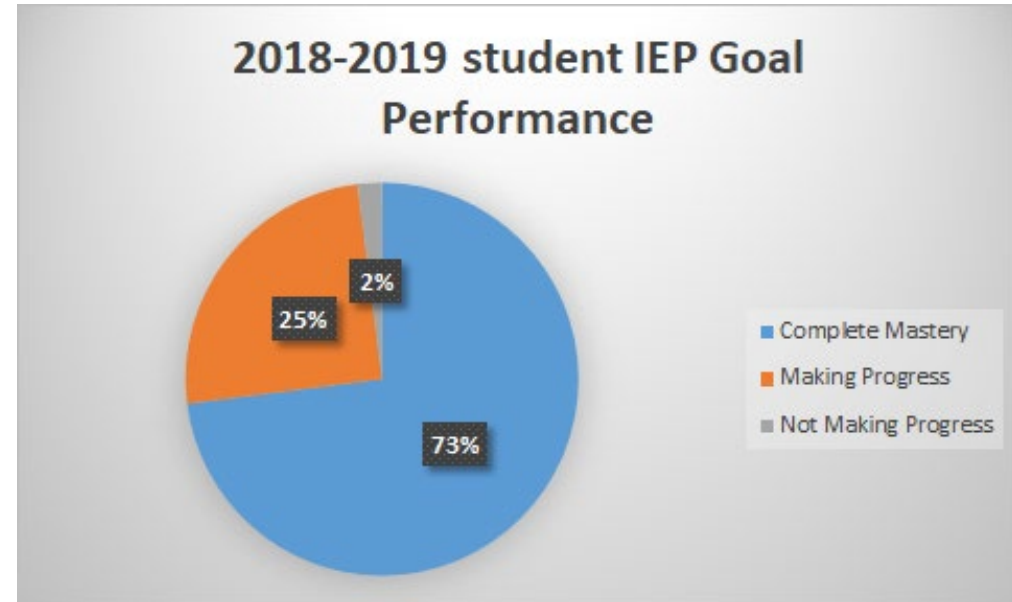
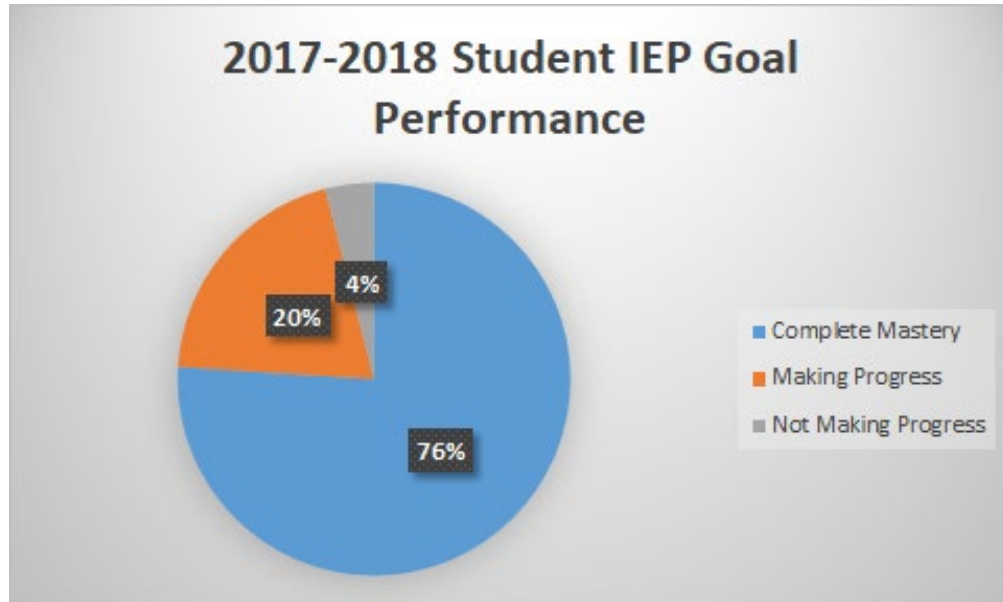
Each Year's Average Score	
■ 2017-18	0.93
■ 2018-19	1.80
■ 2019-20	2.00
■ 2020-21	1.93

MO SW-PBS SUMMER INSTITUTE



SCHOOLWIDE/CLASSROOM

Multi-year IEP Mastery Data



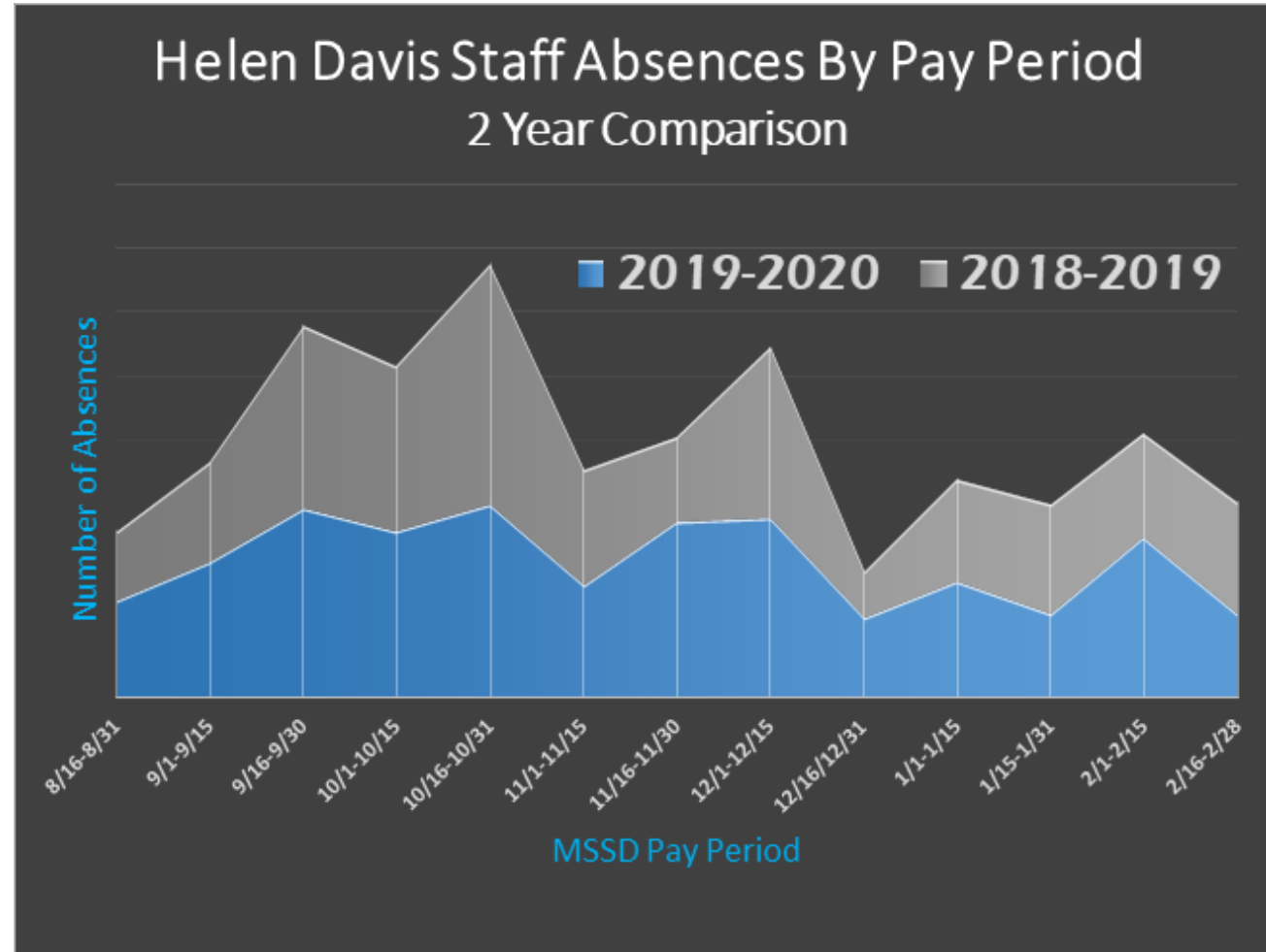
Note: Percentage of IEP Goals Met Based on Approximately 250 IEP Goals Annually Schoolwide

MO SW-PBS SUMMER INSTITUTE



SCHOOLWIDE/CLASSROOM

Impact on Staff



MO SW-PBS SUMMER INSTITUTE



SCHOOLWIDE/CLASSROOM

Virtual Lessons Learned



2020-2021 School Year - 40% of Helen Davis students' families opted into distance learning for most or all of the school year

- **Integrate PBS activity plans into distance learning lessons**
- **Encourage parents to integrate token economy at home**
- **Provide virtual opportunities to participate in school-wide, classroom and individual PBS celebrations and activity**
- **Stick to the plan and make it fit the students' needs, wherever they are**



SCHOOLWIDE/CLASSROOM

Our Helen Davis Team



2017 HELEN DAVIS 2018

SCHOOLWIDE/CLASSROOM



***“If you are not telling YOUR
story, someone else is
telling it for you!”***

-Michael Margolis

Thank you for listening to the Helen Davis story today!

SCHOOLWIDE/CLASSROOM



3-2-1 Reflection

3 things that confirm what you are currently doing

2 takeaways

1 questions you have



MO SW-PBS SUMMER INSTITUTE



SCHOOLWIDE/CLASSROOM



MO SW-PBS SUMMER INSTITUTE



SCHOOLWIDE/CLASSROOM

CONTACT INFORMATION

Jennifer Burns: Home - School Coordinator - jennifer.burns@dese.mo.gov

Mark Wheatley: Building Principal - mark.wheatley@dese.mo.gov

Karen Wigger: NWRPDC Tier 1 Consultant - kwigger@nwmissouri.edu

Carolyn Hall : NWRPDC Tier 2/3 Consultant - chall@nwmissouri.edu



SCHOOLWIDE/CLASSROOM

Welcome to
SCHOOLWIDE & CLASSROOM WEEK!
June 23-24

**MISSOURI SW-PBS
SUMMER INSTITUTE**

VIRTUAL CONFERENCE
SUMMER 2021



THANK YOU FOR JOINING US!

Please complete the
[Evaluation Survey](#).

The next session will start
tomorrow at 9:00 a.m.

Please use the same Zoom
meeting link to join the next
session.