



Missouri Model District— Behavior Pilot Roundtable Discussion & Questions

Session 5K

Dr. Nanci Johnson → MO SW-PBS Director

Laura Shaw → MO SW-PBS Statewide Coach/Facilitator



Who's in the Room??

- ▶ Your Turn:

- ▶ What is your *name*?

- ▶ In which *district* and *building* level do you work?

- ▶ What is your *position* and *assigned roles* within your district/building?

- ▶ What is your current *experience* with SW-PBS?

- ▶ New → Implementing → Fidelity/Innovation

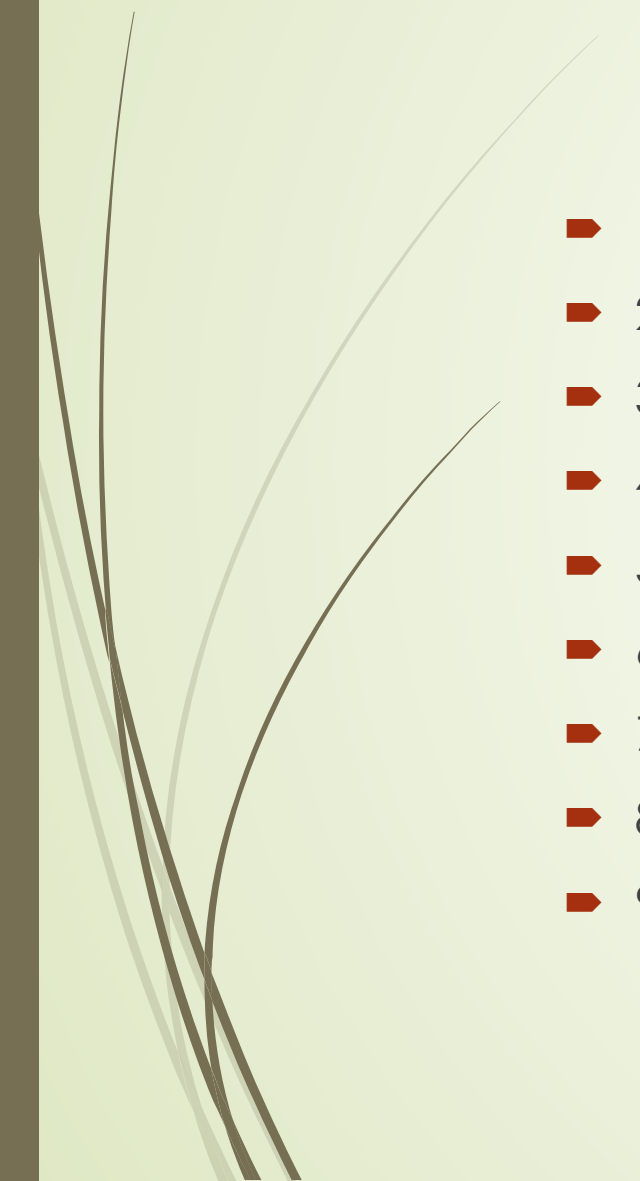
- ▶ Our Turn:

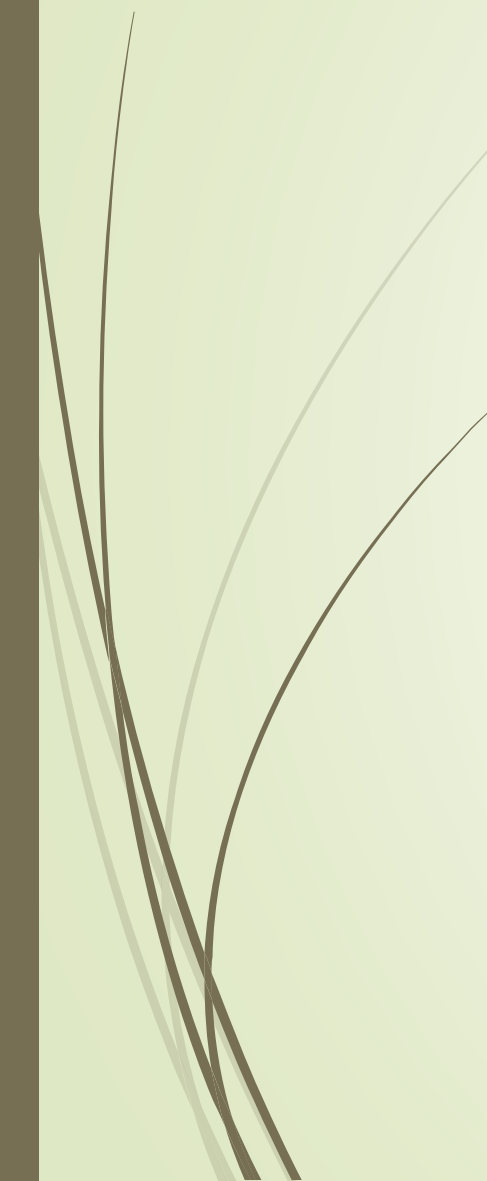
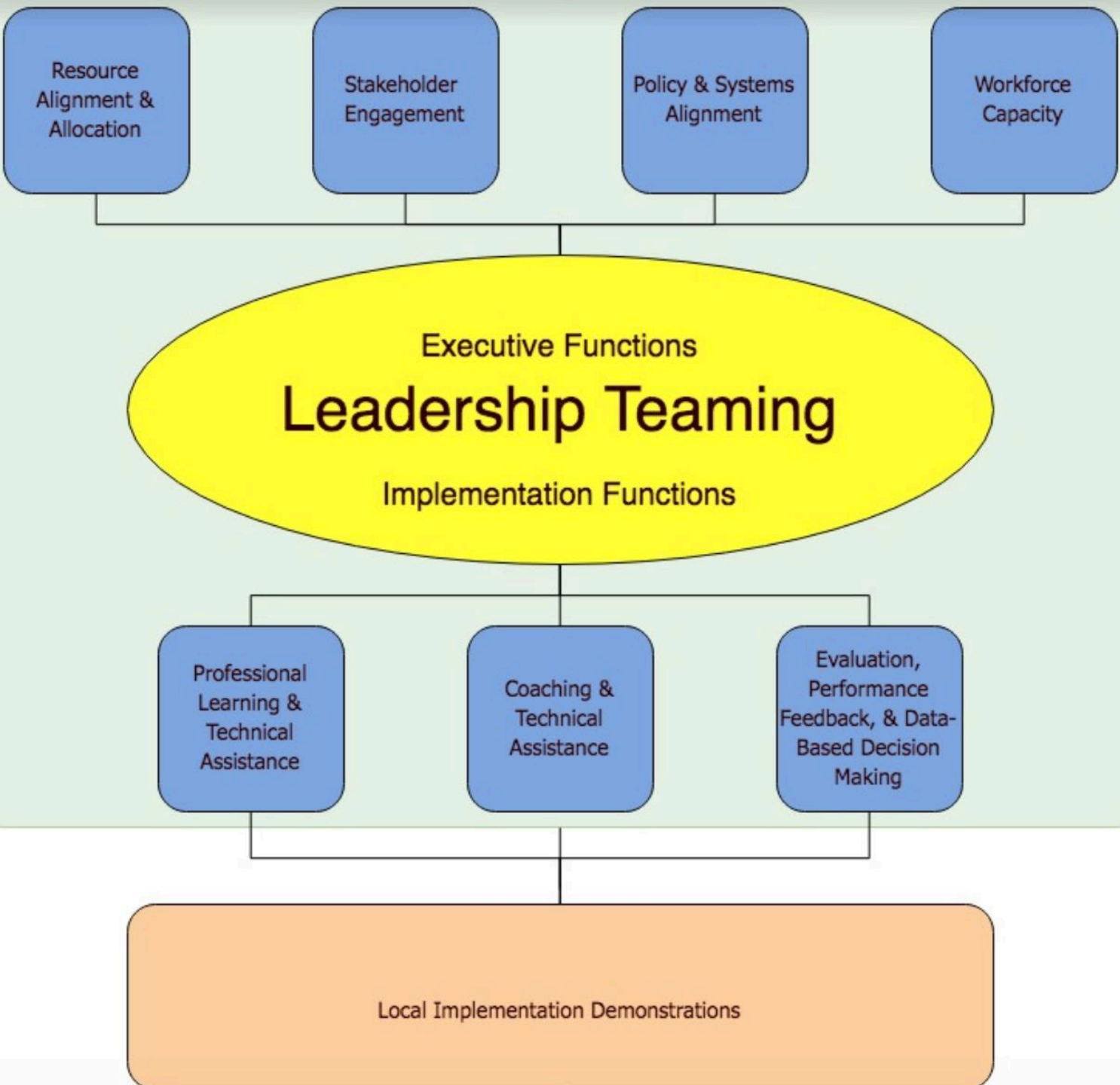
- ▶ Who are we?

- ▶ What is our experience?



District Systems Fidelity Inventory

- 
- 1. Leadership Teaming
 - 2. Resource Alignment, Funding, & Allocation
 - 3. Stakeholder Engagement
 - 4. Professional Learning
 - 5. Coaching and Technical Assistance
 - 6. Evaluation, Performance Feedback, & Data Based Decision Making
 - 7. Policy & Systems Support
 - 8. Workforce Capacity
 - 9. Local Implementation Demonstration





What questions do you have???

- ▶ In regards to the categories on the DSFI and to frame our discussion, what questions do you have?
 - ▶ Write a question on each post-it
 - ▶ Place your post-it on the appropriate category that aligns to your question
 - ▶ We will sort the questions and begin a discussion using these questions



Let's Chat...

- Find someone in the room who you do not know
- Take 10 minutes to get to know your partner's PBS journey
- Discussion starters:
 - In relationship to your behavioral supports, what are you *celebrating* about the school year that just past?
 - In relationship to your behavioral supports, what is one area your hope to *improve* in the upcoming school year?



Discussion

- ▶ Open discussion using questions from the group
- ▶ Question Document <http://bit.ly/2Wyz7Zp>



Wrap Up



- Feel free to email us questions that come up over the remainder of the summer or into this coming school year
- Feel free to share your contact information with one another for continued networking opportunities
- Dr. Nanci Johnson
 - johnsonnw@missouri.edu
- Laura Shaw
 - shawlau@missouri.edu