

Leader in Me and PBIS



John W. Luff Elementary School
Independence, MO
<http://sites.isdschools.org/luff>

Goals for the Session

Can Leader in Me and PBIS live happily ever after? At Luff, we say yes! We will share Luff's journey as we work to build positive relationships that focus on school culture and the whole child.

- 1. Participants will discover how LIM and PBIS can align in a school, with fidelity, encouraging growth, leadership, and whole child development.**
- 2. Participants will discover practical and effective ways to implement PBIS in a LIM school.**
- 3. Give the information and tools needed to feel confident both programs can work hand in hand.**
- 4. Attempt to answer any further questions about how we have merged the two programs.**



A little bit about us...

Preschool-5th grade

430 students

72% Free and Reduced Lunch Rate

60% Caucasian

15% African American

25% Hispanic



Luff's Beliefs, Mission & Vision, and Goals

Beliefs:

- All students can learn.
- All people have the right to be accepted and treated with respect.
- Schools will be safe; orderly and caring environments.
- Effective teaching/learning is the responsibility of the family, school and community.

Mission and Vision:

The faculty and staff of John W. Luff will strive to create a collaborative culture which fosters an environment where students achieve the skills and self-confidence necessary to become lifelong learners.

Goals:

- Increase student achievement and performance.
- Align district programs and services for continuity and cohesiveness.
- Maximize resources to facilitate learning.
- Instill intrinsic rather than extrinsic reward mindset

Our Journey...

- ★ Our journey felt LONG!!
- ★ We sat for many hours contemplating how we could merge two programs with such seemingly different ideas for the kids.
- ★ We began by having both teams comprised of the same people (Lighthouse Team and PBIS Team.)
- ★ We bucked the PBIS initiative for as long as we could 3 years to be exact..worried it would not work well with LIM. After merging the two, we are so thankful to be a part of both. Both programs are stronger when they work together!

Developing Our Expectations and Our Matrix

Our Expectations-

We Lead By...

Doing to Right Thing

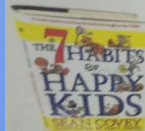
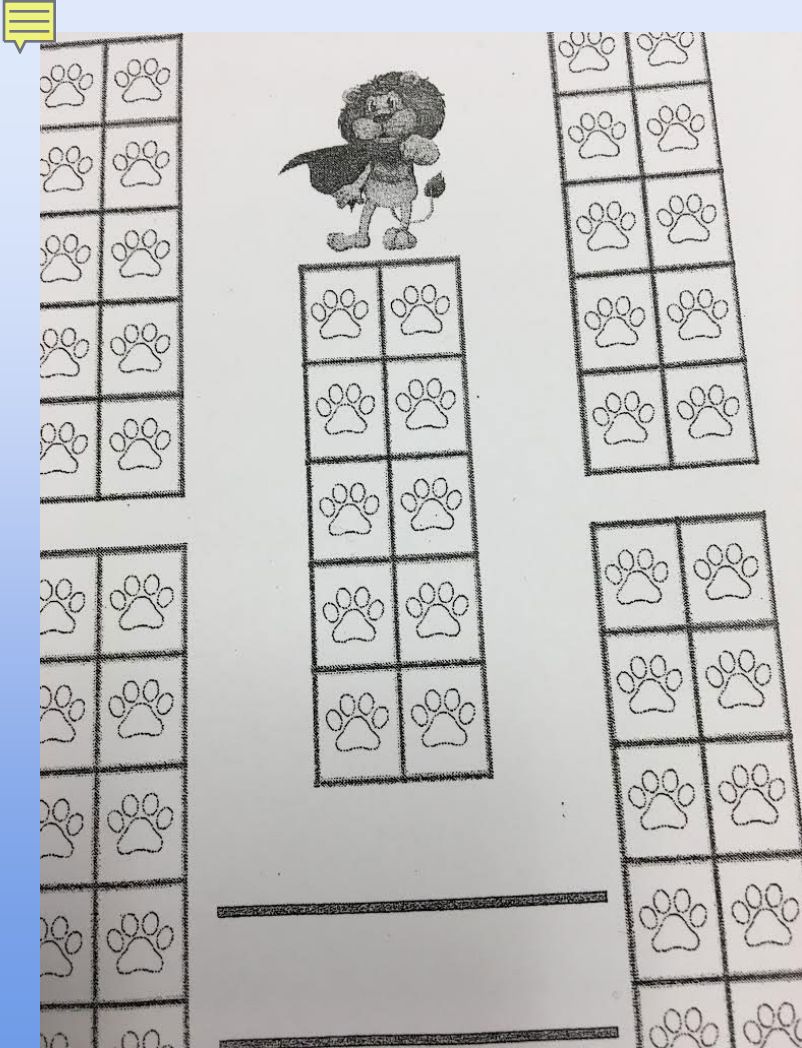
Being Respectful

Serving Others

Copy of our Expectations and Matrix

Rewards/Incentives

- Paw Cards/ Getting Paws
- Classroom Rewards
- Legacy Field Trips



Legacy Rewards

1. Wear a hat for a day
2. Wear sunglasses for a day
3. Stinky feet (no shoes for a day)
4. Show and Tell
5. Free Draw for 15 minutes
- ~~6. Chew gum for a day~~
7. Choose brain breaks for a day
8. Get a treat from the treat box
9. Play on a Chromebook for 15 minutes
10. Play a board game (with a friend) for 15 minutes
11. Skip the lunch line
12. Read to our/another class
13. Bring a stuffed friend to school

★ If you earn 50 paws, you may choose to eat with your teacher at lunch



PAWS

- use pen all day
- free draw
- white board message



PAWS

- hat day -
- smelly feet - wear socks in the classroom
- special note home to parents



PAWS

- wear sunglasses in the classroom
- read a book to our class
- chew gum



PAWS

- read a book to another class
- sit in the teachers chair
- bring a stuffed animal to school



PAWS

- Computer break/games
- show and tell
- work with a 4th grade buddy



LION
LEGACY



From a child's perspective...



Luff Legacy Field Trips



DE SOTO MAYOR

RICK WALKER
TIMOTHY J. MANIEZ (IN)

63%
37%

Race Results: fox4kc.com
100% REPORTING



Luff Legacy Field Trips

September- Community Services League

October- Meals on Wheels

November- Raking Leaves in the Neighborhood

December- Caroling at The Groves Nursing Home

January- Wayside Waifs Animal Shelter

February- Harvesters Food Pantry

March- Drumm Farm planting potatoes and onions



Leader in Me

- ★ It's not about material items- no Cougar Cash, no Bulldog Bucks.
- ★ It's about intrinsic motivation and the legacy of helping others.
- ★ It's about making a difference- They would choose making a difference over a tangible item any day.

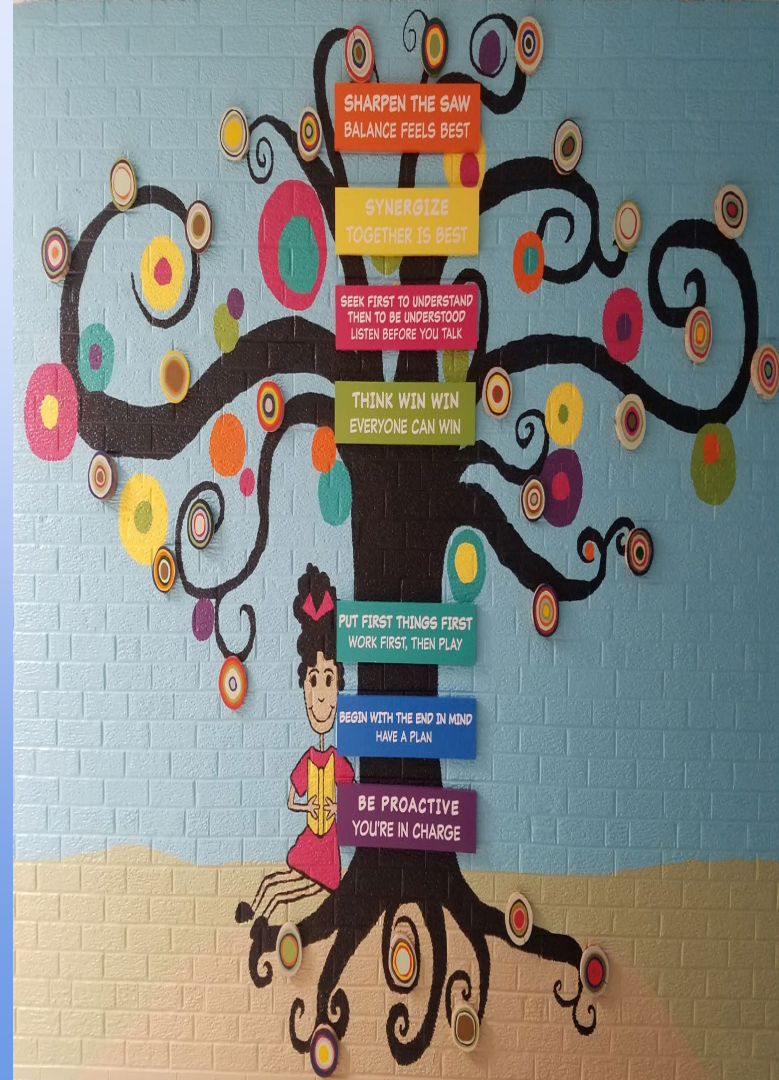
Teaching the Expectations

- First 8 Days- LIM Curriculum
- [Calendar](#)
- Organic Opportunities
- When we see a problem... [30 second Lunch Lessons](#)

Results



While it is hard to correlate the success of LIM to high academic achievement, Luff has seen some growth on MAP as well as on STAR.



Current MAP Data

2018

Math 360.5

ELA 376.3



Culture

- Staff Satisfaction is at an all time high
- Parent Involvement increases each year
- Attendance continues to increase yearly



Leadership

- Students feel pride in their school and know their school cannot function without them daily.



Needed Resources

- ★ **A commitment from our administrator to reserve a portion of the budget to pay for buses.**
- ★ **Local community partners willing to offer volunteer opportunities for our students.**
- ★ **Staff buy-in**



Early Education Matrix

<https://docs.google.com/document/d/1urXGt2K47Axaot-rTJmaDsaLWxbL4sLTKAQzr83CLbc/edit?usp=sharing>

[Legacy Field Trip to The Groves](#)

[Legacy Field Trip to Wayside Waifs](#)

[Legacy Field Trip- Meals on Wheels](#)

[Channel 41- Meals on Wheels](#)

[Garden Club](#)

Contact Information

Dr. Melissa Carver, Principal @melissa_carver1

melissa_carver@idschools.org

Amanda True, 2-3 Grade Looping Teacher

amanda_true@idschools.org

Rae Jean T. Agüero, School Counselor

raejean_aguero@idschools.org