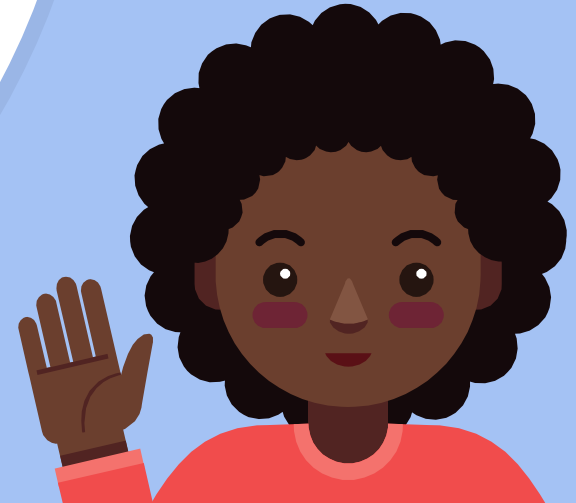


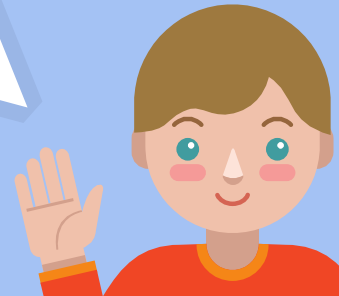
# Reboot-Year 2

Lewis Elementary School  
Excelsior Springs



## Outcomes

- × Attendees will receive, learn, and practice various activities to support staff in order to help students be successful during their school day.
- × Attendees will learn ways to support all staff and students as they begin to implement SW-PBS with fidelity.



## Our journey....

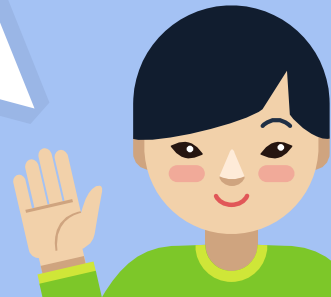
- × 2008-2009, 2009-2010 Bronze Award
- × 2010-2011, 2011-2012 Silver Award
- × 2012-2013, 2013-2014 Gold Award
- × Model school in KC Area
- × Visitors came to see how expectations were set up and meet with SW-PBS team members
- × 30 minute block per week in classroom schedules for SW-PBS lessons



# Our journey....

2012 the decline began...

- × Little if any new staff training
- × No follow through
- × Lacked consistency building wide
- × Matrix was posted in each classroom but no guidance or conversation
- × 2016-Introduction of other behavior management programs...no one knew how to blend those two programs



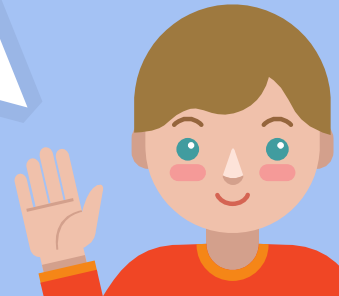
If you are in this place now, share with your neighbor how it looks in your building. Share your journey from great to the need to reboot.



# Our journey....

In 2017 at the beginning of the year....

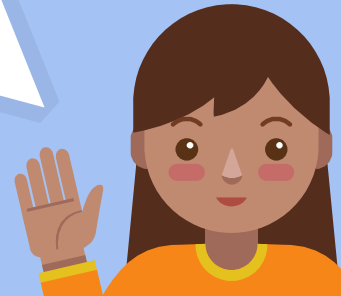
- × New administration who thought that SW-PBS was not being done with fidelity
- × SWIS had been discontinued in the district
- × Tier 1 Team had only one member with training and experience
- × Tier 2/3 Team had only one member with experience but had not had training
- × All other members were new



## Our journey....

In 2017 at the beginning of the year....

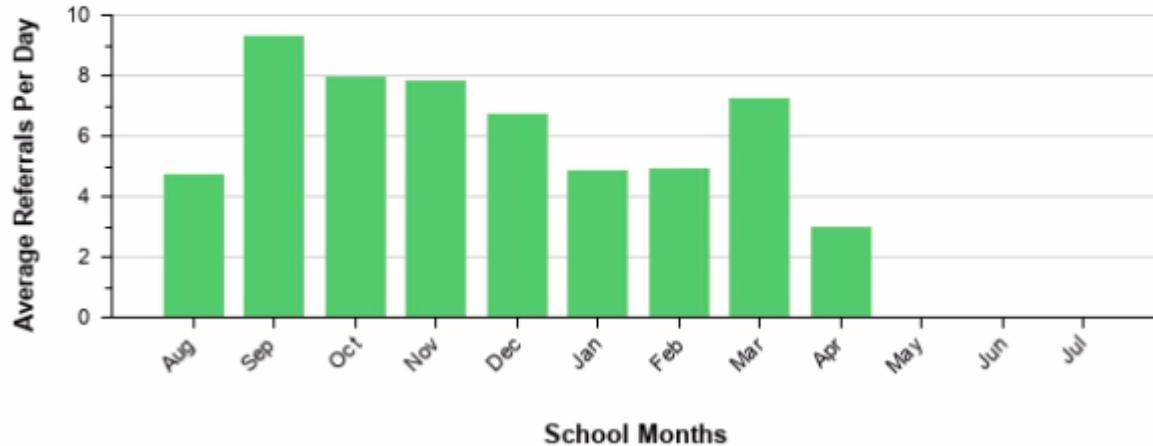
- × KC RPDC was contacted and a meeting was set up to see where to begin
- × SWIS was put back into the building
- × Tier 1 began the preparation phase and attended trainings with a preparation phase cohort and a new Action Plan was created



# Big 5 Data 2018-2019 (as of 4-16-19)

## Average Referrals Per Day Per Month

All, 2018-19





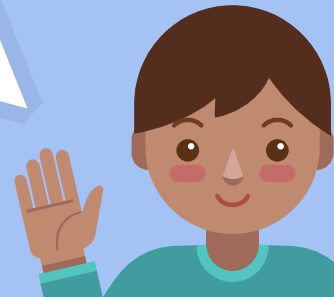
What do you need to change in your building? Share at your table.



## Our journey....

In 2018 at the beginning of the year....

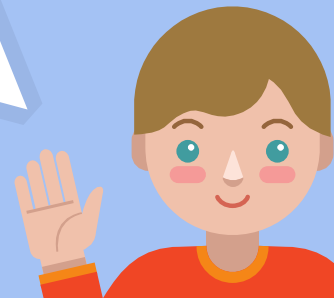
- × Tier 1 began year 2 training with KC RPDC
- × Tier 2 began
- × Tier 1 began the Emerging phase and attended trainings with an Emerging phase cohort and Action Plan was continued



## Our journey....

2018 the schoolwide implementation began...

- × Staff training during back to school days
- × Student bootcamp during first week of school
- × Consistent building wide expectations
- × Building matrices were posted in each classroom and throughout the building
- × Individual classroom matrices created and posted



## Our journey....

In 2018 at the beginning of the year....

- × Staff received a SW-PBS Handbook
- × Building matrix was updated
- × Classroom matrices were given to teachers to make with their students
- × All signage changed-Tiger Stop, matrices added in high traffic areas



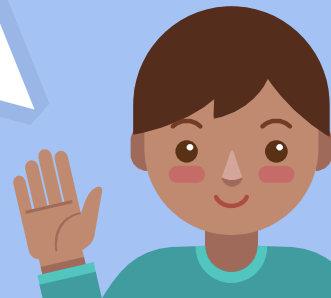


Tiger Stop signs are located at the end of hallways as well as mid-way through long halls.



## What are we doing different?

- × Encouraging and celebrating staff buy-in
- × Sharing grade level data to teams regularly during collaboration
- × SWIS data is added online
- × Explaining the difference between minor and major behaviors
- × Tier 1 team beginning to track minor behaviors in SWIS



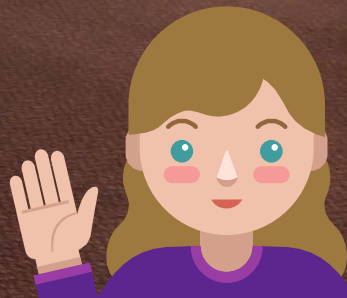
## How did we get buy in with staff?

- × FOOD! Pancakes Butter Syrup for back to school breakfast and Popcorn Butter and Salt for a staff meeting
- × Christmas cart with snacks and drinks delivered to classrooms by SW-PBS members
- × Wordle with positive words staff came up with
- × LOTS of support to staff
- × Listening to feedback from staff





Pancakes  
Btter  
Syrup



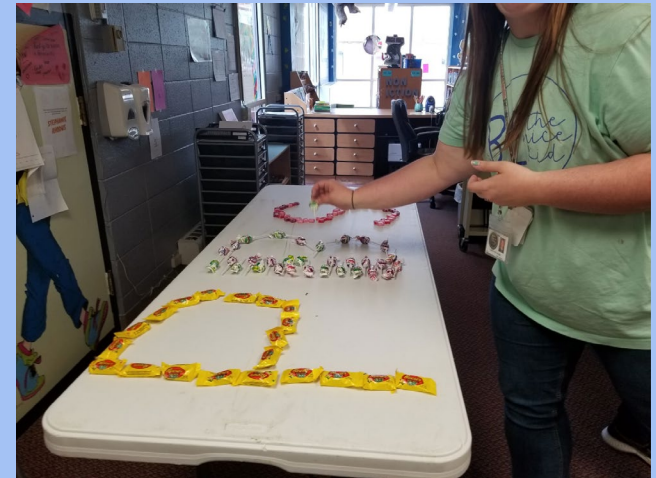


Helpful Celebrate Happy Like Safe  
Kindness Rock-Star Responsible Team  
Love Cooperation Tiger Model  
Thank Appreciation Noticed  
Choices Ready Good Respectful  
Leader Example

Wordle given to staff



Peanut butter cups  
Blow pops  
Starburst





Discuss and make a list to share of how you can recognize staff.





**Lewis Elementary Behavior Matrix**

Expectations	All Areas	Hallways	Cafeteria	Classroom	Restrooms	Bus	Assemblies
<b>Be Respectful</b>	1) Follow directions the first time given 2) Use positive language 3) Agree and disagree respectfully	1) Walk quietly with a level 0 voice	1) Use your own fork 2) Use proper manners 3) Line up in a level 0 voice 4) Share and take turns	1) Enter and exit the building using a level 0 voice 2) Allow others to join in	1) Allow for privacy of others 2) Walk quietly with a level 0 voice	1) Follow the bus monitor 2) Clap when appropriate	1) Eyes on the teacher 2) Clap when appropriate
<b>Be Responsible</b>	4) Use materials correctly 5) Straighten and straighten back 6) Take responsibility for your own actions 7) Stay on task	2) Keep up with your lines 3) Keep hallway clean	4) Place trash in proper compost, landfill, or recycle container 5) Take only the food you are going to eat 6) Keep cafeteria clean	4) Line up with a level 0 voice after the signal 5) Clean up after 0 voice after the signal 6) Wash hands with soap and water 7) 2 samples each, 1-2 paper towels	3) Clean up after 0 voice after the signal 4) Keep track of your belongings 5) Stay with your class		3) Stay with your class
<b>Be Safe</b>	8) Walk back toward 9) Ask permission to leave the line 10) Keep your feet on the floor and all other objects to yourself at all times 11) Report unsafe situations 12) Stay in assigned areas	4) Give clear directions 5) Stay on the right side in a single file 6) Keep your feet on the floor and all other objects to yourself at all times 7) Report unsafe situations 8) Stay in assigned areas	7) 3 subjects on a bench 8) Rub your hand for soap 9) Stay in your seat unless you have permission	5) Use equipment safely 6) Rub your hand for soap 9) Stay in your seat unless you have permission	3) Use supplies correctly 4) Keep water in sink	4) Sit seat to seat and back to back 5) Follow emergency procedures	4) Enter and exit bus correctly with a level 0 voice 5) Sit in bus seat properly

**Guiding Hand**  
The Essential Academic and Developmental Expectations

**Voice levels**

**Level 0 - No Talking**  
Working without talking

**Level 1 - Whisper**  
Only the person next to you can hear you

**Level 2 - Inside learning**  
Talking in a small group and hear you

**Level 3 - Speaker voice**  
Your teacher can hear you without shouting

**Level 4 - Outside voice**

**Mrs. Bradshaw's Classroom Expectations**

<p><b>Be Respectful</b></p> <ul style="list-style-type: none"> <li>* Follow directions the first time</li> <li>* use kind words</li> <li>* walk with a level 0 to class</li> </ul>	<p><b>Be Responsible</b></p> <ul style="list-style-type: none"> <li>* use materials correctly</li> <li>* stay on task</li> <li>* clean up after yourself</li> </ul>	<p><b>Be Safe</b></p> <ul style="list-style-type: none"> <li>* sit seat to seat and back to back</li> <li>* use stairs appropriately</li> <li>* walk face forward</li> </ul>
--	---	--



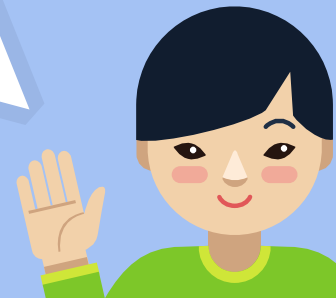
# How do we recognize students?

## Individual students

We have worked with teachers on using 4 to 1 ratio. Our staff was anti-paper. We had Tiger Tickets in the past and a Tiger Store.

## Classrooms

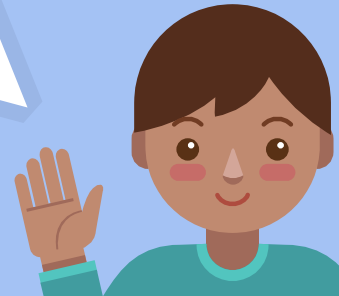
Tiger Ticket Boards-This year, we are paperless and the staff loves it!





## Classroom Recognition

Each classroom has a 30 ticket countdown outside their classroom. Students come up with the celebration they are working towards.



# Lewis PBS Classroom Celebrations



Miss Ali



Ms. Darr



Mrs. Kessler



Mrs. Verdi



Mrs. Flanagan



Ms. Malaponti



Mrs. Mikd



Mrs.  
Nordstrom



Mr. Gasey



Mrs. Gomo



Miss Turner



Miss  
Wiedmayer



Miss Dobkins



Mrs. Jamison



Miss Stone



Miss White



Mrs. Brinker



Mr. Campbell



Mrs. Clark



Mrs.  
O'Connor



Miss Bowers



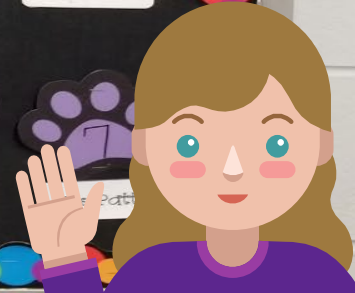
Mrs. Davis



Miss Greco



Miss



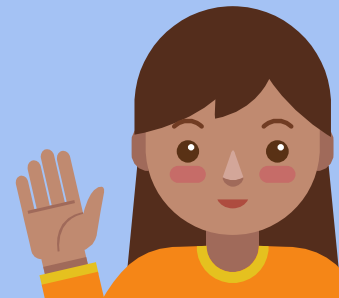
# Take a Virtual Tour of Your School

Think about the following things--

- × Your school's behavior Matrix is posted in ALL locations.
- × You hear teachers teaching the expectations.
- × You see and hear teachers giving specific positive feedback.
- × You see students practicing the schools expectations.

Discuss thoughts with your table--

Where do you go next?





## What's next for 2019-2020?

Tier 2 is rolling  
out check  
in/check out

Tracking minor  
behaviors in SWIS

Training new  
staff and  
supporting all  
staff



# Questions?



# Contact information

## Renee Bradshaw

Tier 1 Coach

Title 1 Reading Specialist

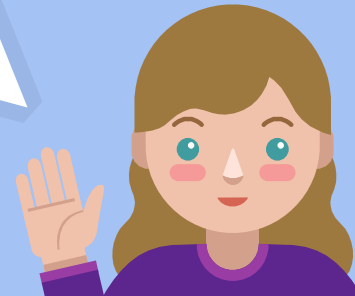
[rbradshaw@ga.essd40.com](mailto:rbradshaw@ga.essd40.com)

## Cindi Flanegin

Tier 1 Coach

1st Grade Teacher

[cflanegin@ga.essd40.com](mailto:cflanegin@ga.essd40.com)



# Credits

Special thanks to all the people who made and released these awesome resources for free:

- × Presentation template by [SlidesCarnival](#)