

# Beacon School

Still Going Strong  
Tier I, II, and III  
with  
Tier IV and V Behaviors



CLASSROOMS ARE  
WHERE IT'S AT

FOR:

- Fidelity
- Consistency
- Equity



# Hello



- Beacon School is a consortium of fourteen school districts in Southwest Missouri.
- Created over twenty-five years ago to meet the needs of students for which their school districts had exhausted all resources in attempting to change chronic behavior difficulties.

CLASSROOMS ARE  
WHERE IT'S AT

FOR:  
 Fidelity  
 Consistency  
 Equity

# Challenges of Alternative Schools

Lions, Lambs, Hybrids

Bi-Polar

Asperger's

RAD

Academic deficits

Environmental Challenges

Autism

Domestic Violence

Homeless

Poverty

Anxiety

Depression-Severe

Hopeless

CLASSROOMS ARE  
WHERE IT'S AT

FOR:

- Fidelity
- Consistency
- Equity

# Beacon Alternative School

- 10 staff, 30 students (2018-2019)
- Staff meet daily at end of each day.
- Discussing the day: kid behavior, our response, did it work as planned, what do we need to change.



CLASSROOMS ARE  
WHERE IT'S AT

FOR:  
 Fidelity  
 Consistency  
 Equity

# Beacon Alternative School



- Consistency in expectations across all areas.
- Commitment to teaching and practicing procedures.
- Structures within program align with Tier II strategies.

CLASSROOMS ARE  
WHERE IT'S AT

FOR:

- Fidelity
- Consistency
- Equity

# Beacon Alternative School

Tools:

We use just about anything that any staff can think of to plan for success.

Hypothesized function driving reinforcement/rewards, consequences, interventions.



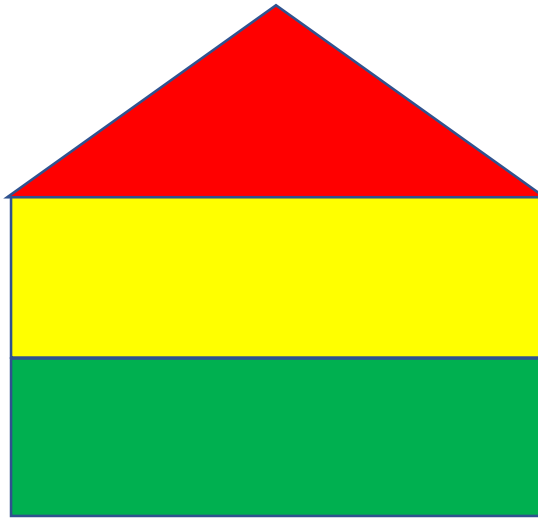
CLASSROOMS ARE  
WHERE IT'S AT

FOR:  
 Fidelity  
 Consistency  
 Equity



# Beacon School Tier 1- Systems, Data, Practices

Our triangles often take on new shapes



CLASSROOMS ARE  
WHERE IT'S AT

FOR:

- Fidelity
- Consistency
- Equity

# Beacon School Tier 2- Behavior Interventions

- Tier 2 Interventions are part of everyday structure for all students
- CICO, SGSS, Self-Monitoring
- Every Student is assessed upon entry

CLASSROOMS ARE  
WHERE IT'S AT

FOR:

- Fidelity
- Consistency
- Equity





# Beacon Alternative School: Tier 3- Individual Behavior Plans

- Nearly all come with an IEP
- All students have goals, all behavior, many academic
- All individual plans focus on life skills/transition

CLASSROOMS ARE  
WHERE IT'S AT

FOR:

- Fidelity
- Consistency
- Equity

# Challenges of implementing PBIS in Alternative Schools

- Discipline/Data
- Approach to Tier II
- Reinforcers
- Funding



CLASSROOMS ARE  
WHERE IT'S AT

FOR:

- Fidelity
- Consistency
- Equity



**DATA**

**Recognition  
Reward  
Motivation**

ODRS

Minors

Criticals

Majors

**&**



**CLASSROOMS ARE WHERE IT'S AT**

FOR:

- Fidelity
- Consistency
- Equity

# Beacon- *Data*

- Every student has personalized life skills
- Data shared with staff in real time, with Board of Directors at monthly meeting
- Staff meets everyday after school



CLASSROOMS ARE  
WHERE IT'S AT

FOR:

- Fidelity
- Consistency
- Equity

# Beacon Alternative School

- Criticals rather than ODR's
  - Physical Aggression
  - Elopement
  - Illegal Acts



CLASSROOMS ARE  
WHERE IT'S AT

FOR:  
 Fidelity  
 Consistency  
 Equity

# Beacon Alternative School

- Monitor Lost Learning Time: defined as time outside of the classroom.
- Log time spent in Alternative Learning Room
- Log time spent in isolation due to out of control behavior or self-imposed.



CLASSROOMS ARE  
WHERE IT'S AT

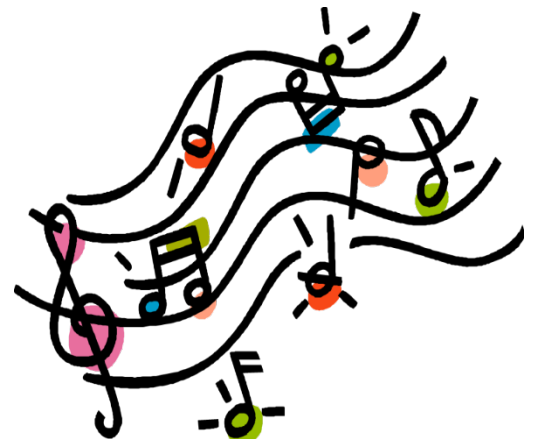
FOR:

- Fidelity
- Consistency
- Equity



# Beacon- *Reinforcers*

- Beacon Bucks for Beacon Store
- Positive Referrals
- Principal's Club
- Increased privileges for high school students who meet certain criteria
  - Music
  - Coffee



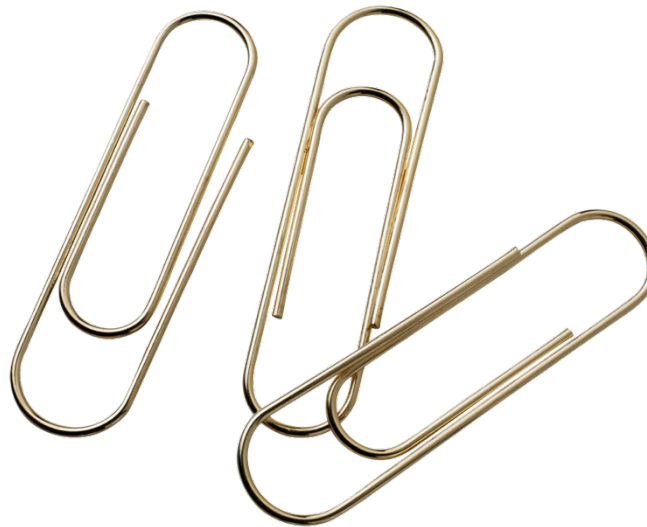
CLASSROOMS ARE  
WHERE IT'S AT

FOR:

- Fidelity
- Consistency
- Equity

# Beacon Alternative School

- Positive statements
- Beacon Bucks
- Increased privileges upon advancing on Level System



CLASSROOMS ARE  
WHERE IT'S AT

FOR:

- Fidelity
- Consistency
- Equity





# Beacon Alternative School: What If ???

- There are times that our “usual” doesn’t work for a student.
- Will leave the traditional “Beacon structure”
- Create individual plans



CLASSROOMS ARE  
WHERE IT'S AT

FOR:  
 Fidelity  
 Consistency  
 Equity

# Resources

## Where do we find Resources?



- Various behavior models
  - Boys' Town
  - Love & Logic
  - BIST
  - Anger Replacement Therapy
  - Discipline with Dignity

CLASSROOMS ARE  
WHERE IT'S AT

FOR:

- Fidelity
- Consistency
- Equity

# Resources

The best resource is:



Sharing Ideas  
Talking to Each Other

CLASSROOMS ARE  
WHERE IT'S AT

FOR:

- Fidelity
- Consistency
- Equity

# Contact:

Susan James, Beacon School

[susanjames@joplinschools.org](mailto:susanjames@joplinschools.org)

417 625-5215

CLASSROOMS ARE  
WHERE IT'S AT

FOR:

- Fidelity
- Consistency
- Equity