



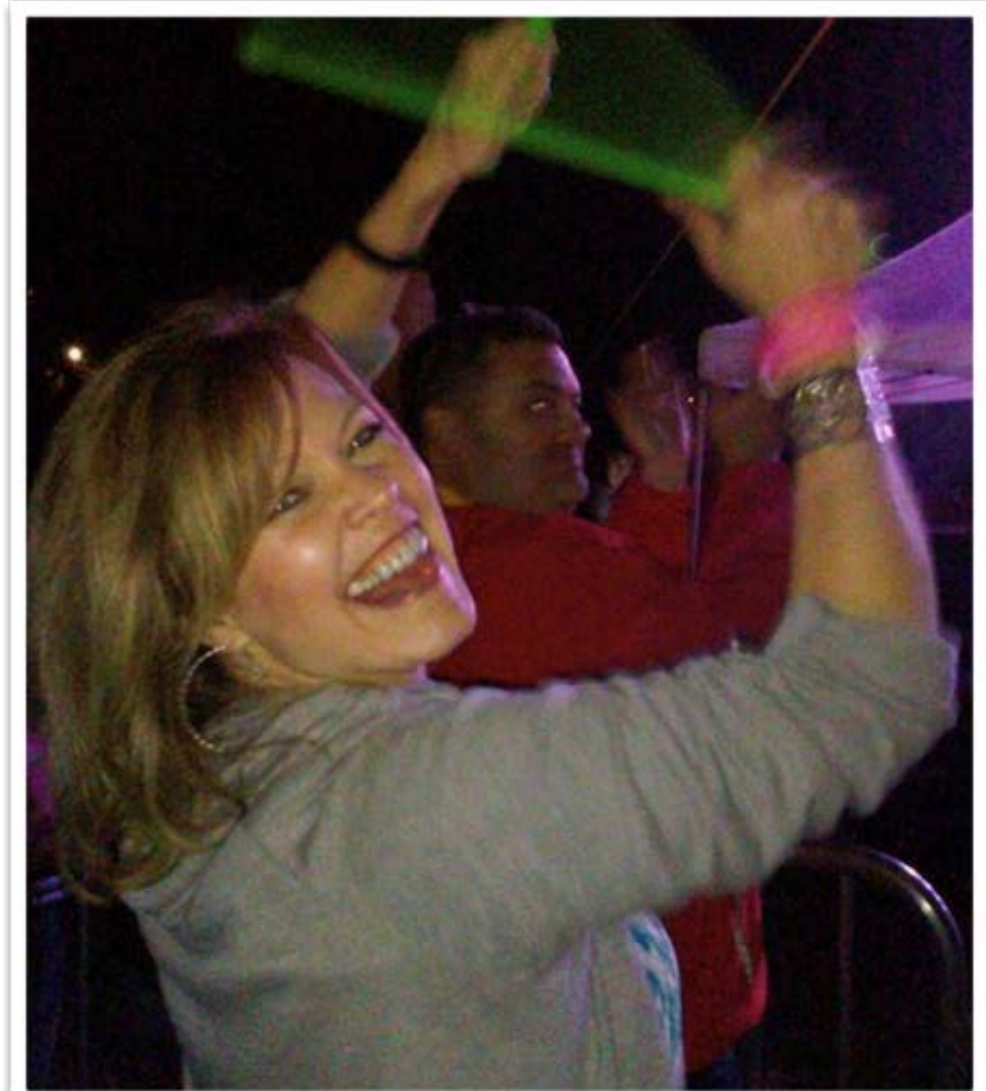
Amy Casey, Ph.D.

**I love all my
students!**

Does that make me culturally
responsive?

Who is Amy Casey?

- ❖ Everyone has a story





I am from the tobacco farm, hide in the barn, search for fascinating rocks until second grade. Then it was move to the city...no more tobacco barns, rocks or even crazy cows chasing me down.

I am from Patty and Buddy, really. Mom was who knows where. Great aunt and uncle did the raising with my three “brothers” and little sister, stray dogs and stray people.

I am from fried porkchops, mashed potatoes and bread and butter at every meal. Long John Silvers if it was a special occasion.

I am from Charlie’s Angels, Mork & Mindy, and MTV – Martha Quinn and ohhhh I love Duran Duran and Cyndi Lauper!

I am from “Do I need to get the fly swatter?” And “if your friends jumped off a bridge would you follow them?!”

I am from let’s go down to the creek or walk back in the woods. I will stay in this pool until I become a prune!

I am from Christmas Eve, Easter, Thanksgiving – always a reason to eat, celebrate and be thankful. Better do it with at least 50,000 relatives or you haven’t done it right.

~ Amy Casey 2006



I Am From...

- ❖ Use the provided template to create a poem about yourself
- ❖ Share it with your group

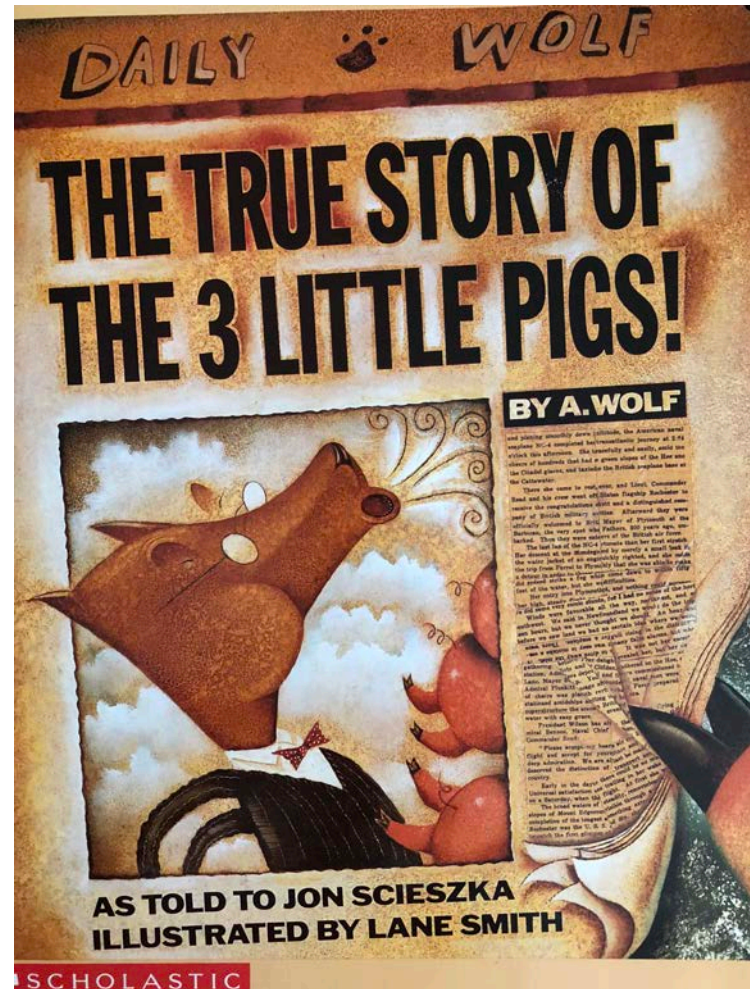


Culturally Responsive Means...

- ❖ Brain storm with the people in your group about what culturally responsive teaching/being culturally responsive means.
- ❖ Brain Break!



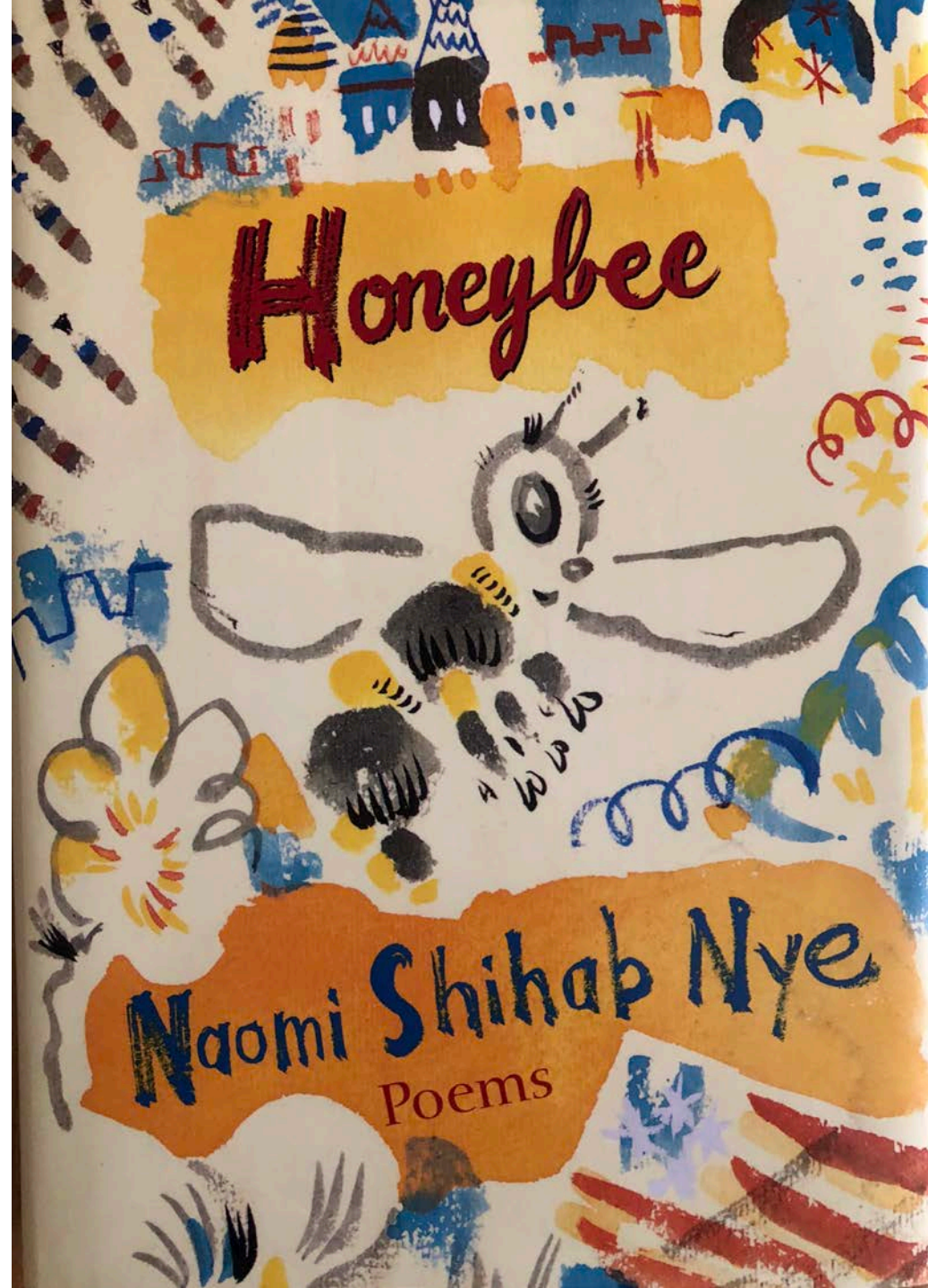
Student perspective => Respond



“We need to give each other the space to grow, to be ourselves, to exercise our diversity. We need to give each other space so that we may both give and receive such beautiful things as ideas, openness, dignity, joy, healing, and inclusion.”

–Max de Pree

Books as
powerful
gateways





Making lessons culturally responsive

Literature, PBS, CW-Fit,
Flexible Seating



We the people...

Who are WE?

Some Stats

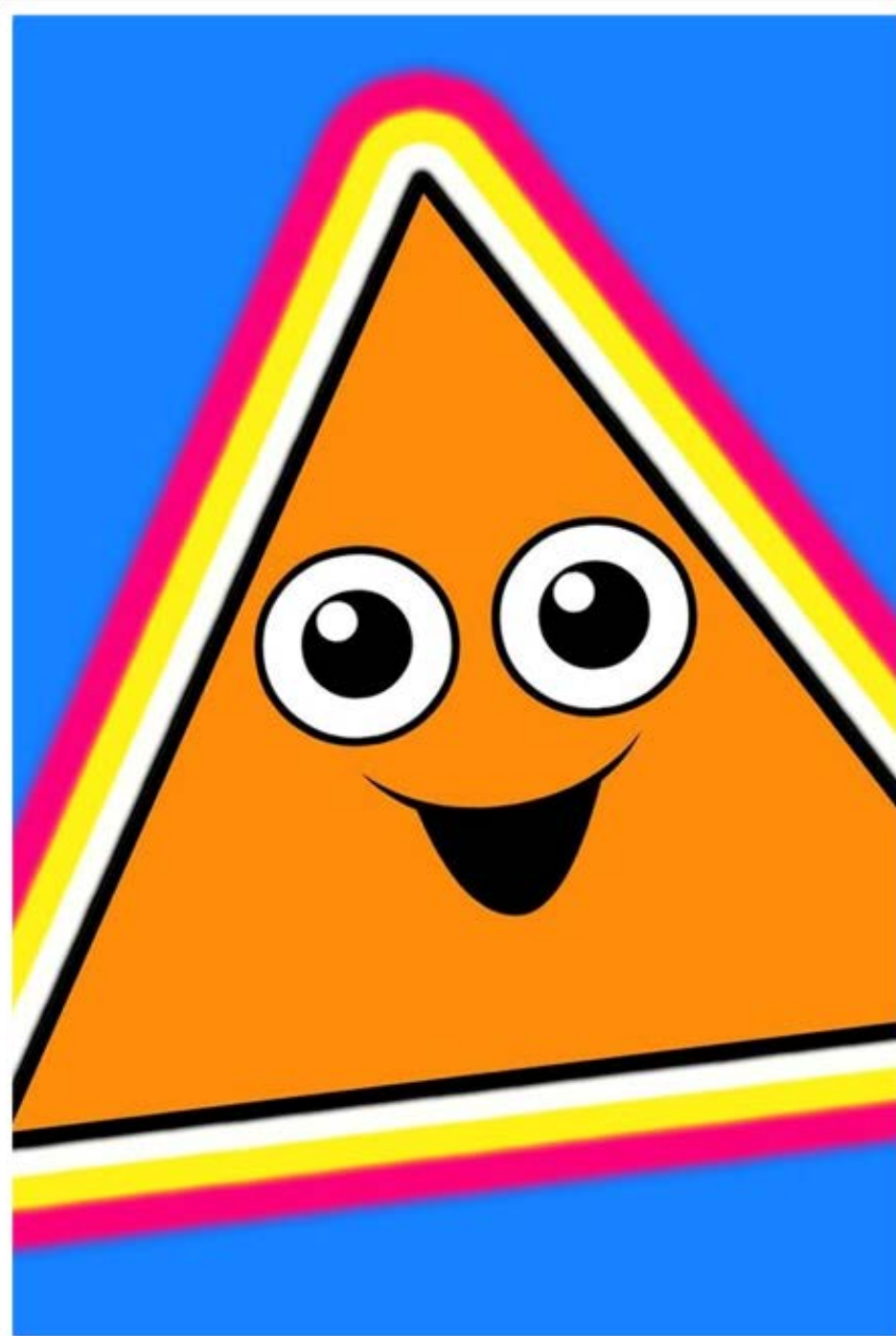
NKC ranks as the 3rd most diverse district in the State, but we have The MOST diverse elementary and high school.

<https://www.niche.com/k12/search/most-diverse-schools/s/missouri/>

- ❖ NKC Teachers - 96% white, 4% teachers of color
- ❖ NKC Students - 69.5% white, 30.5% students of color

Identity Triangle

Common Humanity
Collectives
Individual



Abandonment of a racist identity

- ❖ Contact Stage
- ❖ Disintegration Stage
- ❖ Reintegration Stage

Establishment of a non-racist identity

- ❖ Pseudo-independence
- ❖ Immersion / Emersion
- ❖ Autonomy

White privilege doesn't
mean your life hasn't been
hard; it means that your
skin color isn't one of the
things making it harder. ~

William Li Campanello



Research

Let's give em' something to talk about

Michael's story





Color Blind or Color Brave?



The problem with being color blind



Reflect

Commit

Contact info:

Amy Casey, Ph.D.

amy.casey@nkcschools.org

Twitter ~ @aimster70