

MTSS: Connecting School Climate, Behavior Support, & Academic Success

George Sugai
OSEP Center on PBIS
Center for Behavioral Education & Research
University of Connecticut
June 11 2014

9th MO SW-PBS Summer Training Institute
MO PBIS
June 11, 2014

www.pbis.org www.cber.org

PURPOSE

Review of fundamentals for enhancing MTSS links: SWPBS + School Climate + Discipline + Academic Success

Multi-tiered Systems of Support?
Planning success for all students

Shaping of MTSS

Prevention & Intervention

- Positive behavior support
- Early literacy instruction
- Curriculum-based assessment
- Direct instruction
- Function-based support
- Precision teaching
- Problem solving consultation

Response-to-Intervention

- Universal screening
- Continuous progress monitoring
- Continuum of evidence-based practices
- Implementation fidelity
- Team driven leadership & coordination
- Data-based decision-making

Multi-Tiered Systems of Support

- Multi-tiered behavior framework
- School climate & positive discipline
- School mental health
- Interconnected Systems
- Implementation science

IMPLEMENTATION W/ FIDELITY

CONTINUOUS PROGRESS MONITORING

CONTINUUM OF EVIDENCE-BASED INTERVENTIONS

UNIVERSAL SCREENING

CORE FEATURES MTSS/RTI

CONTENT EXPERTISE & FLUENCY

DATA-BASED DECISION MAKING & PROBLEM SOLVING

TEAM-BASED IMPLEMENTATION

CONTINUUM OF SCHOOL-WIDE INSTRUCTIONAL & POSITIVE BEHAVIOR SUPPORT

Primary Prevention: School-/Classroom-Wide Systems for All Students, Staff, & Settings

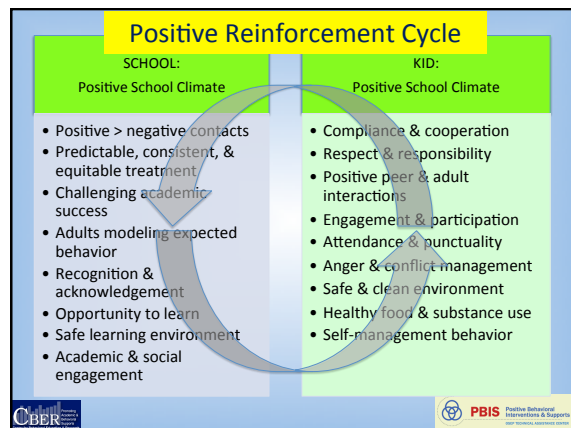
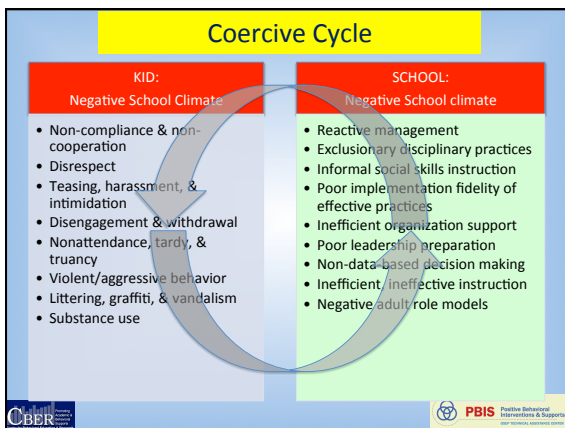
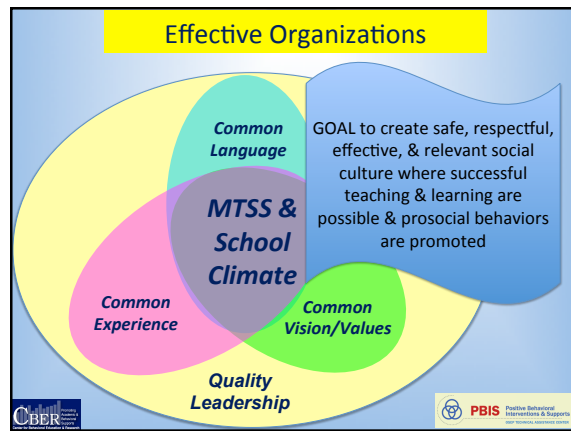
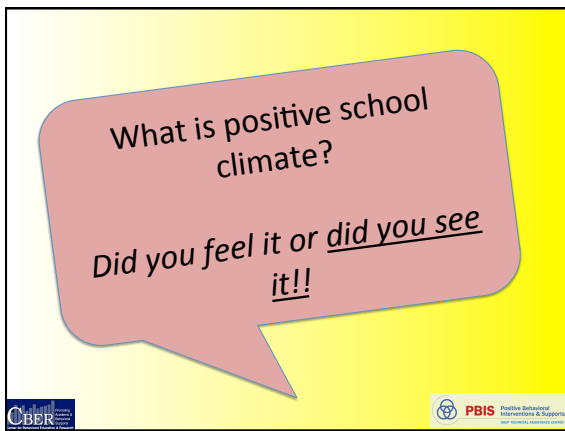
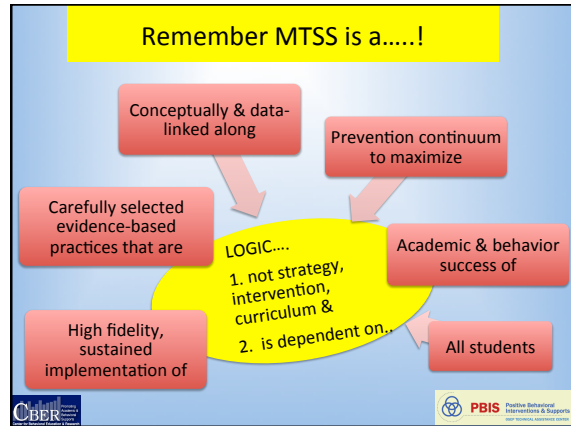
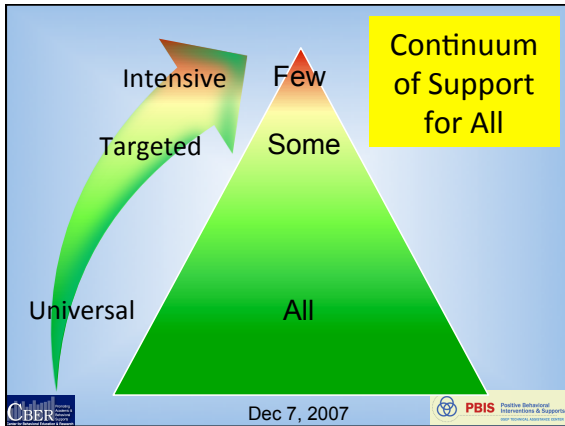
Secondary Prevention: Specialized Group Systems for Students with At-Risk Behavior

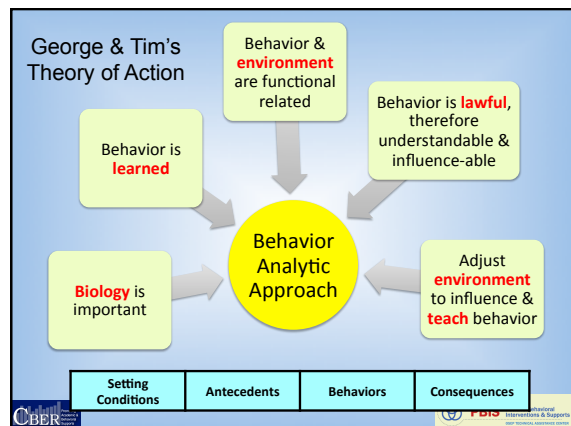
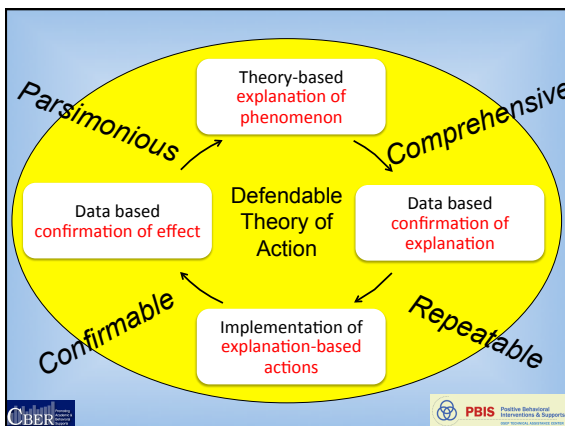
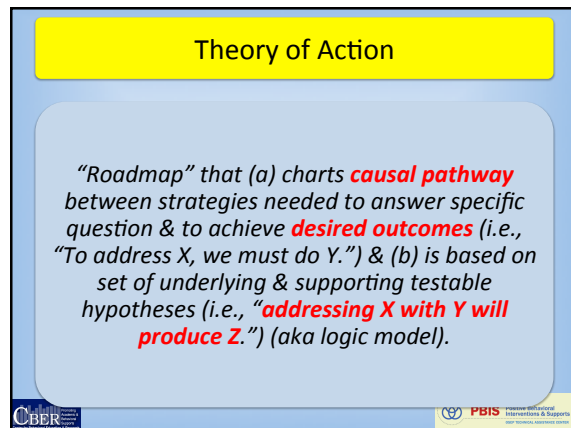
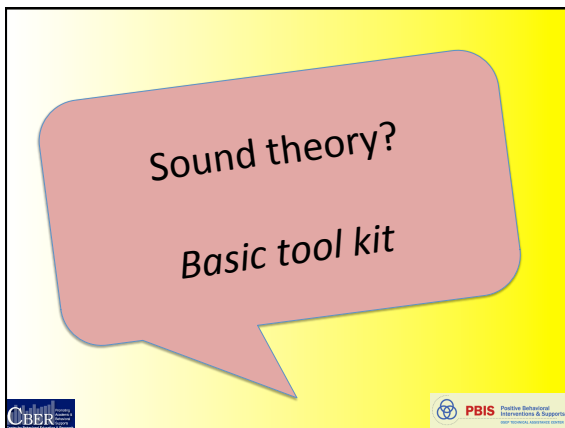
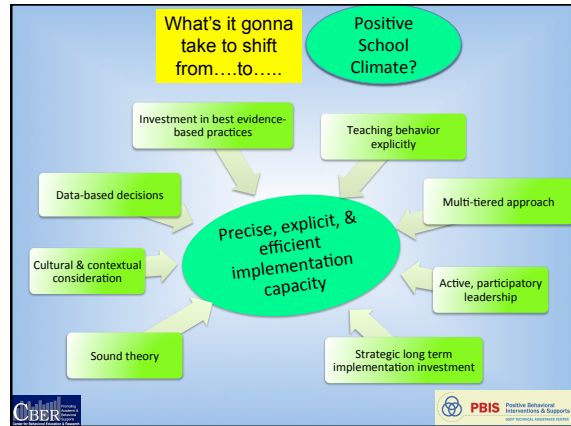
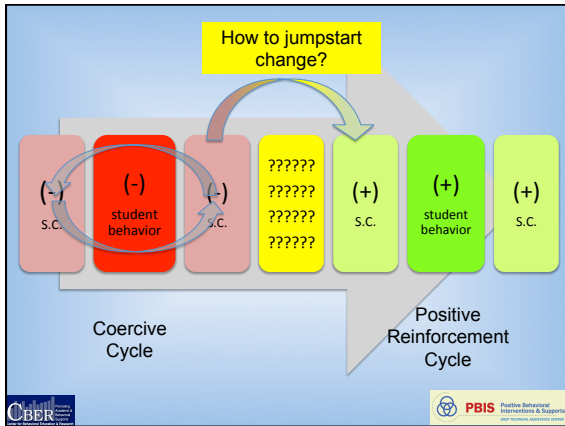
Tertiary Prevention: Specialized Individualized Systems for Students with High-Risk Behavior

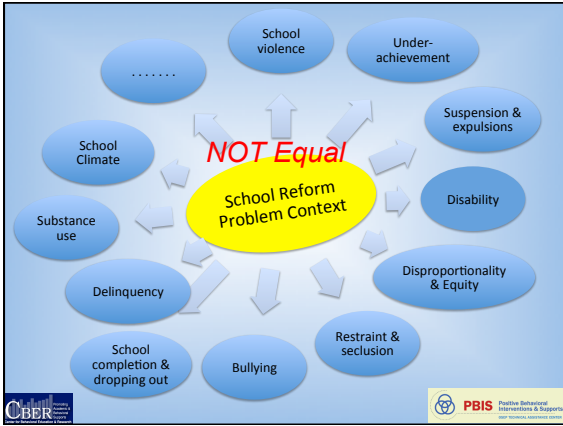
FEW
~5%

SOME
~15%

ALL
~80% of Students



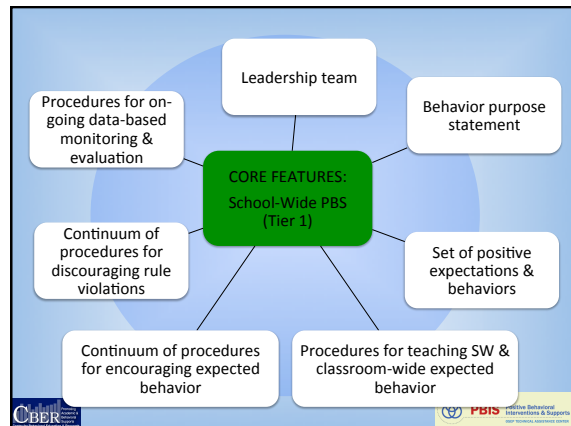
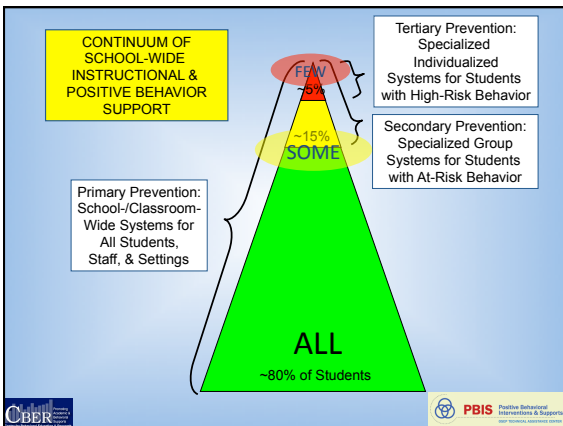


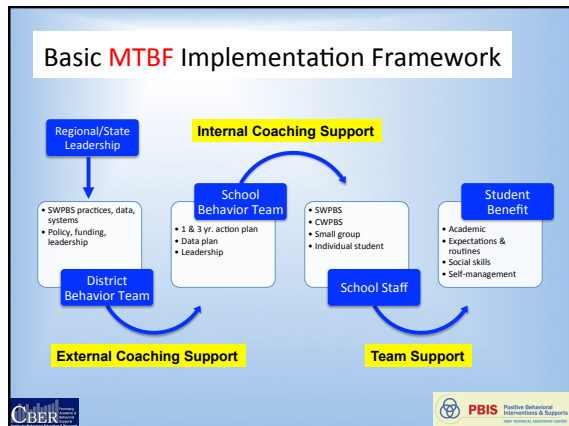
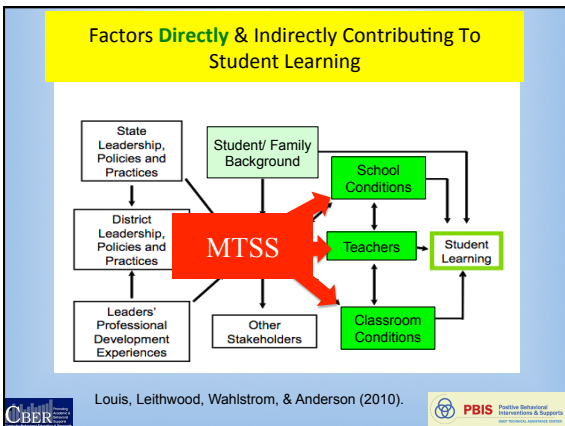
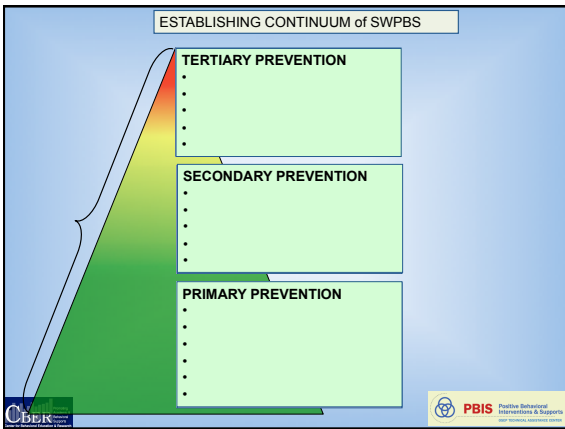
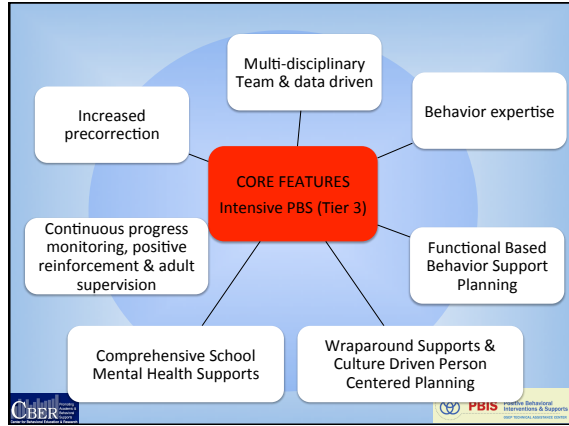
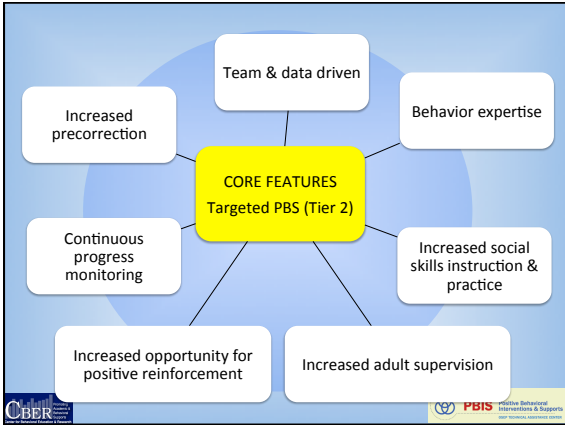


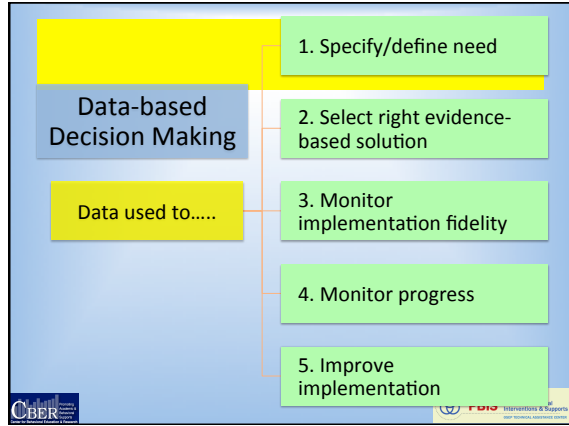
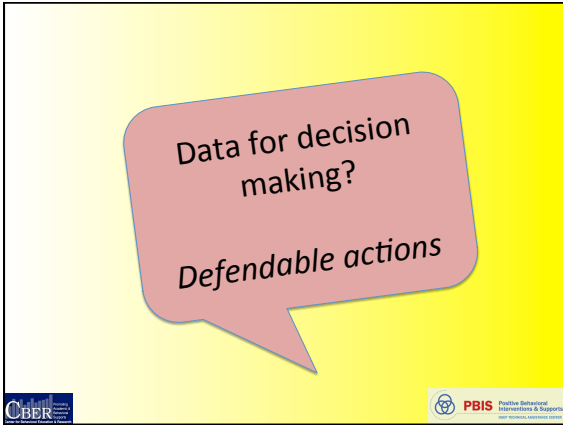
Behaviors	Consequences
STUDENT BEHAVIOR <ul style="list-style-type: none"> Aggression Bullying behavior Non-compliance Insubordination Social w/drawal Truancy Law/norm violations Weapon possession Harassment Self-injury 	ADULT BEHAVIOR <ul style="list-style-type: none"> Office referral In school detention Out of school suspension Probation & parole Arrests & incarceration Restraint & seclusion Mental health referral
OUTCOMES <ul style="list-style-type: none"> Disproportionality Dropping out School failure Mental illness School-to-prison pipeline Achievement gap Unemployment Delinquency 	

Apply Behavior Analytic Logic

	CONTEXT CONDITIONS	STUDENT BEHAVIOR	ADULT BEHAVIOR	STUDENT OUTCOME
RISK	<ul style="list-style-type: none"> Hunger Chronic illness Disability Race Gender Violence & trauma exposure Unemployment Gangs Substance use Mental illness 	<ul style="list-style-type: none"> Aggression Bullying behavior Non-compliance Social withdrawal Truancy Law/norm violations Substance use Weapon possession Harassment Self-injury 	<ul style="list-style-type: none"> Office referral In school detention Out of school suspension Probation & parole Arrests & incarceration Restraint & seclusion Mental health referral 	<ul style="list-style-type: none"> Disproportionality Dropping out School failure Mental illness School-to-prison pipeline Achievement gap Unemployment Delinquency
Conditions	Setting Conditions	Antecedents	Adult Behaviors	Consequences
PREVENTIVE-PROTECTIVES	<ul style="list-style-type: none"> Employment Physical health Recreation Healthy diet Preschool Literacy exposure Safe neighborhoods Positive role models 	<ul style="list-style-type: none"> Problem solving Conflict & anger management Asking for assistance Communicating feelings Literacy Self-management skills Managing bullying behavior 	<ul style="list-style-type: none"> Lesson, supervise, reinforce Active supervision Check in check out Function-based support Positive reinforcement Precorrection Opportunity to respond Generalization training Data-based decision making 	<ul style="list-style-type: none"> Postsecondary education Employment Family Recreation & leisure activities Physical & mental health Positive peer group Safe neighborhood







Implementation Fidelity		IMPLEMENTATION	
		Effective	Not Effective
PRACTICE	Effective	Maximum Student Benefit	Reduced Probability of Student Benefit
	Not Effective	Low Probability for Student Benefit	Low Probability for Student Benefit

Fixsen & Blase, 2009

