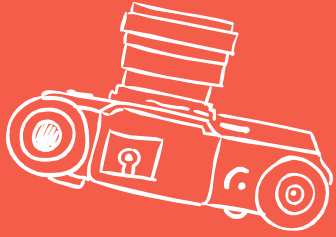


INCORPORATING DIGITAL CITIZENSHIP IN PBIS





ROADMAP TO INCORPORATING TECHNOLOGY

- ✘ Adding technology to the expectations matrix
- ✘ Materials used to teach digital citizenship in an elementary building
- ✘ Discover how Mathews Elementary went 1 to 1 and how their PBIS team integrated that technology into their already existing program.



WWW.MENTI.COM

37 10 50





HELEN MATHEWS ELEMENTARY, NIXA MO

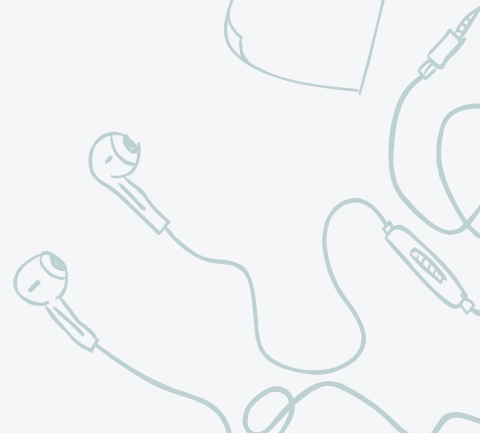


Christina O'Neill

- 9 years in education
- SPED teacher
- Tier III coach
- chrisonneill@nixaschools.net
- @oneillclassroom

Jordan Politte

- 
- 5 years in Education
 - ED Sped Teacher
 - Tier II
 - jordanpolitte@nixaschools.net

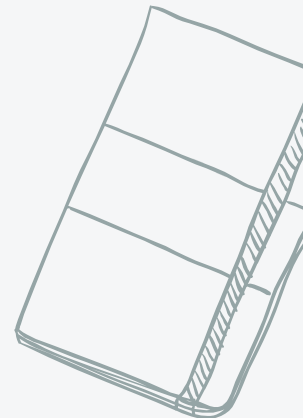
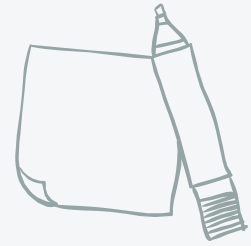




Helen Mathews Elementary

489 students K-4

K-1: Chromebooks stays at school
2-4: Take Chromebooks home





BUILDING BLOCKS FOR SUCCESS

expectation

education

accountability



1.

SET CLEAR EXPECTATIONS

SOARing students show great CHARACTER!



* Kindness

* integrity

* Perseverance

	All Settings	Classroom	Bathroom	Playground	Eagle Café/ Multi- Room	Hallways	Gym	Bus
Be Safe S	KAHFOOTY Notify teacher of unsafe conditions Ask permission to leave any setting	Each teacher will define expectations based on the four norms Safe, Respectful, Responsible, learner Stay Safe Practice digital citizenship	Walk Wash hands with one squirt of soap, water, and only 2 paper towels	Use equipment appropriately Stay in approved areas	Report spills Walk quietly Stay in line and face forward Feet under your table, pockets under your seat Notify teaching when leaving Quiet Voices	Walk slowly Stay to the right	Sit on pockets silently	Keep aisles clear Seat to Seat Back to Back Face Forward Wait until bus comes to complete stop to get on or off
Outstanding Learner O	Give full effort Be a team player	Use technology for learning	Return to teacher quickly	Be a problem solver	Try new foods Be an active learner	Be an active learner	Silent Voices	Use quiet voices
Always Respectful A	Use school words Respond appropriately to quiet signal Use kind words One voice	Protect your device at all times and in all settings	Give others privacy Keep voices at a low tone	Let others play	Eat only your food Show table manners Follow adult directions Use polite language Respond appropriately to show appreciation	Short, straight, and silent lines	Follow adult directions Use polite language Be an attentive listener	Follow all bus expectations Know what belongings are permitted on the bus Respect others' space and property
Responsible R	Follow directions first time given Keep school neat and clean Keep personal belongings stored safely	Maintain your device Be accountable for your device	Clean up after yourself; flush, throw away paper towels	Return equipment Line up upon signal	Clean up after yourself Use restroom first Take all belongings Keep all toys in backpack	Take a pass Return to class promptly	Take all belongings when you leave Keep all items in your backpack	Do what the driver requests Watch for your stop and be on time

* RESPECT

* Self-control

*

* Compassion

* Responsibility *

* Cooperation *

* Courage *

* Trustworthiness

Chromebook Expectations

Mathews Elementary K-1



Stay On The
Right Site



Safe
Search
Only



Handle
With
Care



Feed
Electricity
Nightly



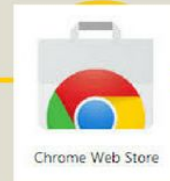
Only Selfies
Do Not
Photo
Friends



Remember
the 3 Steps
to Report

Chromebook Expectations

Mathews Elementary



Chromestore
Requires
Supervision



Safe
Search
Only



School
Appropriate
Images



Feed
Electricity
Nightly



Only Selfies
Do Not
Photo
Friends



Always Have
An Adult
Close By



2.

EDUCATE YOUR TEACHERS AND STUDENTS



SOARing Explorers

Google classroom



HAVING AN AMAZING TECHNOLOGY COACH


- ★ Meets with each classroom every month
- ★ Teaches teachers how to effectively use technology (and what to look out for)
- ★ Has her own google classroom with all digital citizenship lessons



Digital
superheros



Digital
Footprint
tattoo



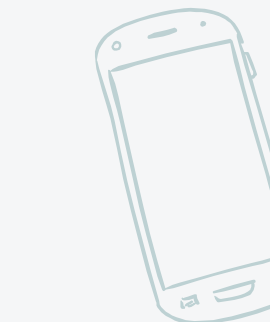
Online
privacy

Safe
navigation





LET THE INTERNET WORK FOR YOU



3.

CLEAR AND APPROPRIATE ACCOUNTABILITY



PBIS

Technology Minor

Reteach
Expectation

MINOR
01

Reteach
Expectation

MINOR
02

**New
Behavior -
Start at #1**

#2

Same Behavior

- Follow Step 1
- Replace CB with another tool
- CB remains w/Classroom Teacher until processed (to be used at the Classroom Teacher's discretion)

#3

Same Behavior

- Follow Step #1 & #2
- Think sheet sent home and signed by parent
- CB stored with classroom teacher when not in use
- CB use only for instruction and assessment for 2 days

MINOR

03

**New
Behavior -
Start at #1**

MINOR

04

**New
Behavior -
Start at #1**

#4

Same Behavior

- Follow steps #1, #2, & #3
- CB use only for instruction & assessment 5 days
- Parent Contact

#5

Same Behavior

- Follow steps #1, #2, #3 & #4
- Meet with peer leadership team

MINOR

05

**New
Behavior -
Start at #1**





THANKS!

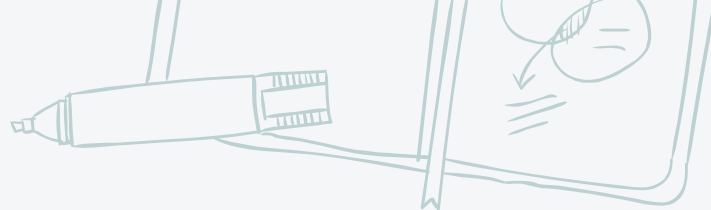
Heather Michel

ITF extraordinaire



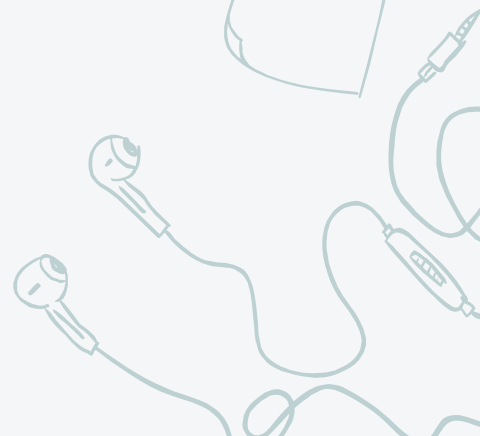
Resources






Christina O'Neill
chrisonneill@nixaschools.net

Jordan Politte
jordanpolitte@nixaschools.net





“Our kids are growing up on a digital playground and no one is on recess duty.”

-@KevinHoneycutt