

Beacon School

Implementing Tier I, II, and III
with
Tier V, VI, and VII Challenges

MO SW-PBS:

LEADING THE WAY

FOR STUDENT ENGAGEMENT





Hello



- ❑ Beacon School is a consortium of twelve school districts in Southwest Missouri.
- ❑ Created more than two decades ago to meet the needs of students for which their school districts had exhausted all resources in attempting to change chronic behavior difficulties.

MO SW-PBS:



Challenges of Alternative Schools

Lions, Lambs, Hybrids

Bi-Polar

Asperger's

RAD

Academic deficits

Environmental Challenges

Autism

Domestic Violence

Homeless

Poverty

Anxiety

Depression-Severe

Hopeless

Beacon Alternative School

- 10 staff, 22 students
- Staff meet daily at end of each day.
- Discussing the day: kid behavior, our response, did it work as planned, what do we need to change.



MO SW-PBS:

LEADING THE WAY

FOR STUDENT ENGAGEMENT

Beacon Alternative School



- Consistency in expectations across all areas.
- Commitment to teaching and practicing procedures.
- Structures within program align with Tier II strategies.

MO SW-PBS:

LEADING THE WAY

FOR STUDENT ENGAGEMENT

Beacon Alternative School

Tools:

We use just about anything that any staff can think of to plan for success.

Hypothesized function driving reinforcement/rewards, consequences, interventions.



MO SW-PBS:

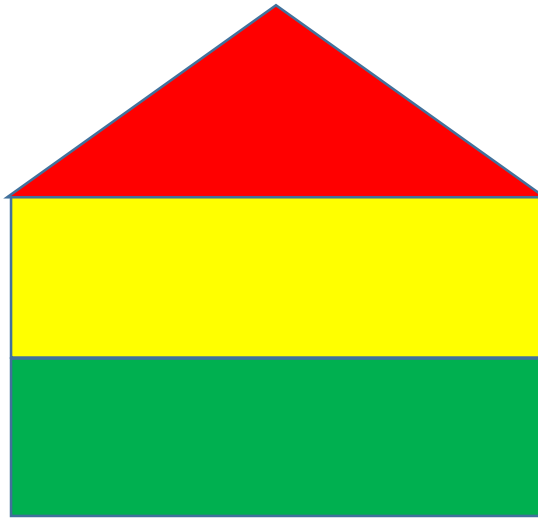
LEADING THE WAY

FOR STUDENT ENGAGEMENT



Beacon School Tier 1- Systems, Data, Practices

Our triangles often take on new shapes



MO SW-PBS:



FOR STUDENT ENGAGEMENT



Beacon School Tier 2- Behavior Interventions

- Tier 2 Interventions are part of everyday structure for all students
- CICO, SSIG, C&C
- Every Student is assessed upon entry

MO SW-PBS:

LEADING THE WAY 

FOR STUDENT ENGAGEMENT



Beacon Alternative School: Tier 3- Individual Behavior Plans

- Nearly all come with an IEP
- All students have goals, all behavior, many academic
- All individual plans focus on life skills/transition

MO SW-PBS:

LEADING THE WAY

FOR STUDENT ENGAGEMENT

Challenges of implementing PBIS in Alternative Schools

- Discipline/Data
- Approach to Tier II
- Reinforcers
- Funding



MO SW-PBS:

LEADING THE WAY

FOR STUDENT ENGAGEMENT



DATA

**Recognition
Reward
Motivation**

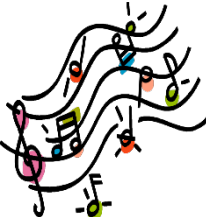
ODRS

Minors

Criticals

Majors

&



MO SW-PBS:

LEADING THE WAY

FOR STUDENT ENGAGEMENT

Beacon- *Data*

- Every student has personalized life skills
- Data shared with staff in real time, with Board of Directors at monthly meeting
- Staff meets everyday after school



MO SW-PBS:

LEADING THE WAY
FOR STUDENT ENGAGEMENT

Beacon Alternative School

- Criticals rather than ODR's
 - Physical Aggression
 - Elopement
 - Illegal Acts



MO SW-PBS:

LEADING THE WAY

FOR STUDENT ENGAGEMENT

Beacon Alternative School

- Monitor Lost Learning Time: defined as time outside of the classroom.
- Log time spent in Alternative Learning Room
- Log time spent in isolation due to out of control behavior.



MO SW-PBS:

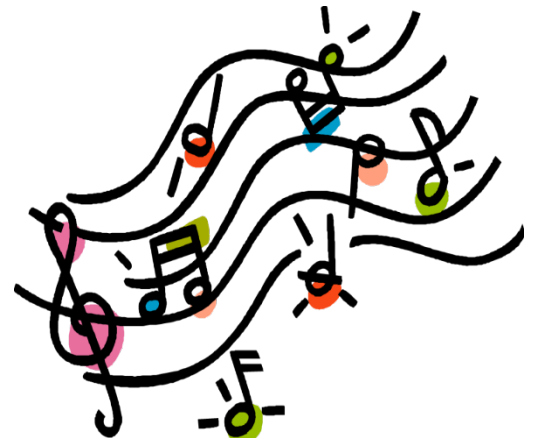
LEADING THE WAY

FOR STUDENT ENGAGEMENT



Beacon- *Reinforcers*

- Beacon Bucks for Beacon Store
- Positive Referrals
- Principal's Club
- Increased privileges for high school students who meet certain criteria
 - Music
 - Coffee



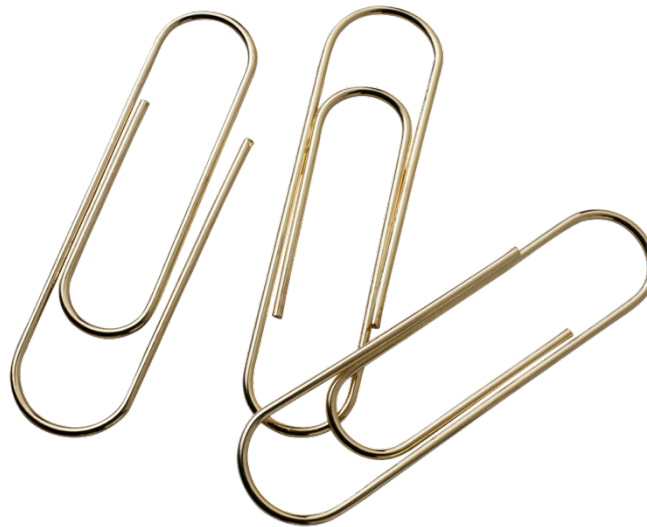
MO SW-PBS:

LEADING THE WAY

FOR STUDENT ENGAGEMENT

Beacon Alternative School

- Positive statements
- Beacon Bucks
- Increased privileges upon advancing on Level System



MO SW-PBS:

LEADING THE WAY

FOR STUDENT ENGAGEMENT

Beacon Alternative School: What If ???

- There are times that our “usual” doesn’t work for a student.
- Will leave the traditional “Beacon structure”
- Create individual plans



MO SW-PBS:

LEADING THE WAY

FOR STUDENT ENGAGEMENT



Resources

Where do we find Resources?



- Various behavior models

DBT

Boys' Town

Love & Logic

Anger Replacement Therapy

BIST

Discipline with Dignity

CPI

MO SW-PBS:

LEADING THE WAY

FOR STUDENT ENGAGEMENT



Resources

The best resource is:



Sharing Ideas
Talking to Each Other

MO SW-PBS:

LEADING THE WAY

FOR STUDENT ENGAGEMENT

Contact:

Susan James, Beacon Alternative School

susanjames@joplinschools.org

417 625-5215

MO SW-PBS:

LEADING THE WAY 

FOR STUDENT ENGAGEMENT