



Alternative Schools

Implementing Tier I, II, and III

with

Tier V, VI, and VII Challenges

MO SW-PBS:

LEADING THE WAY

FOR STUDENT ENGAGEMENT





Hello

Alternative Schools in the Southwest Region

- Susan James, Beacon School, cooperative housed in Joplin School District
- Michelle Branham, Heartland School, school within Nevada R-5
- Frances Gooden, Finley River School, program within Ozark School District

MO SW-PBS:

LEADING THE WAY 

FOR STUDENT ENGAGEMENT

Challenges of Alternative Schools

Bi-Polar

Like having lions and lambs together

Asperger's

RAD

Addiction

Environmental
Challenges

Autism

Substance
Abuse

Homeless

Independent

Anxiety

Depression-Severe

Pregnancy

MO SW-PBS:

LEADING THE WAY

FOR STUDENT ENGAGEMENT

Beacon Alternative School- Joplin

- 10 staff, 22 students
- Beacon serves 16 school districts with 7 sending at this time.
- K-12
- Each student maintains their sending school's identity.



MO SW-PBS:

LEADING THE WAY

FOR STUDENT ENGAGEMENT

Ozark Finley River- Ozark



- 5 staff, 40 students
- Grades 9-12
- Choice School, Application Process
- Graduate with all other Ozark Seniors

MO SW-PBS:

LEADING THE WAY

FOR STUDENT ENGAGEMENT

Heartland - Nevada

- 12 staff, up to 70 students
- Grades 1-12
- Primarily a school to provide educational services to clients of Heartland Behavioral Health Services
- Also provides a more restrictive educational placement for Nevada R-5 students.



MO SW-PBS:

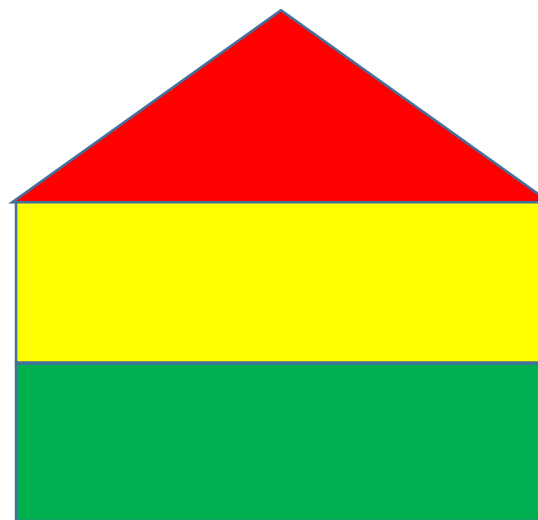
LEADING THE WAY

FOR STUDENT ENGAGEMENT



Tier 1- Systems, Data, Practices

Our triangles often take on new shapes



MO SW-PBS:

LEADING THE WAY

FOR STUDENT ENGAGEMENT



Tier 2- Behavior Interventions

- Tier 2 Interventions are part of everyday structure for all students
- CICO, SSIG, C&C
- Every student is assessed upon entry
- Tier 2 behaviors are why they are in our school

MO SW-PBS:

LEADING THE WAY 

FOR STUDENT ENGAGEMENT



Tier 3- Individual Behavior Plans

- Average 50% come with an IEP
- All students have contracts/goals both academic and behavior
- All individual plans focus on life skills/transition

MO SW-PBS:

LEADING THE WAY

FOR STUDENT ENGAGEMENT

Challenges of implementing PBIS in Alternative Schools

- Discipline/Data
- Approach to Tier II
- Reinforcers
- Funding



MO SW-PBS:

LEADING THE WAY

FOR STUDENT ENGAGEMENT



DATA

**Recognition
Reward
Motivation**

ODRS

Minors

Criticals

Majors

&



MO SW-PBS:

LEADING THE WAY

FOR STUDENT ENGAGEMENT



Beacon- *Data*

- Every student has personalized life skills
- Data staff in real time, with Board of Directors at monthly meeting
- Staff meets everyday after school
- Criticals rather than ODRs
 - Physical Aggression
 - Elopement
 - Illegal Acts

MO SW-PBS:



Finley River- *Data*

- Minors on google form
- Majors are on paper
- SIS/Pulse
- Data shared with staff and district

MO SW-PBS:

LEADING THE WAY

FOR STUDENT ENGAGEMENT



Heartland - *Data*

- SIS
- All ODRs are electronic, both majors and minors are recorded
- Our data collection tremendously skews our reported data to MO SW-PBIS

MO SW-PBS:

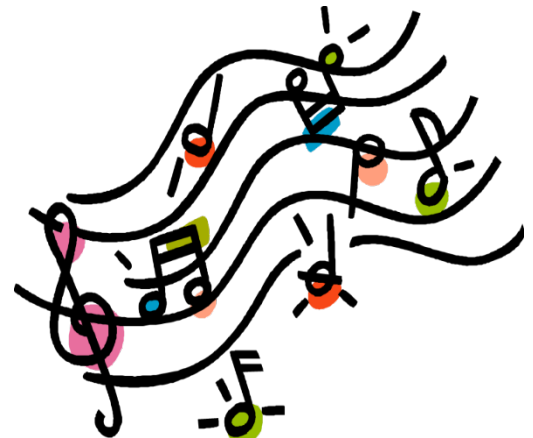
LEADING THE WAY 

FOR STUDENT ENGAGEMENT



Beacon- *Reinforcers*

- Beacon Bucks for Beacon Store
- Positive Referrals
- Principal's Club
- Increased privileges for high school students who meet certain criteria
 - Music
 - Coffee



MO SW-PBS:

LEADING THE WAY

FOR STUDENT ENGAGEMENT

Finley River- *Reinforcers*

- Positive statements
- 100 Board
- Free coffee for being on time on Tuesday and Thursday
- Special lunches or breakfasts for targeted behavior
- Special trips for those who meet established criteria



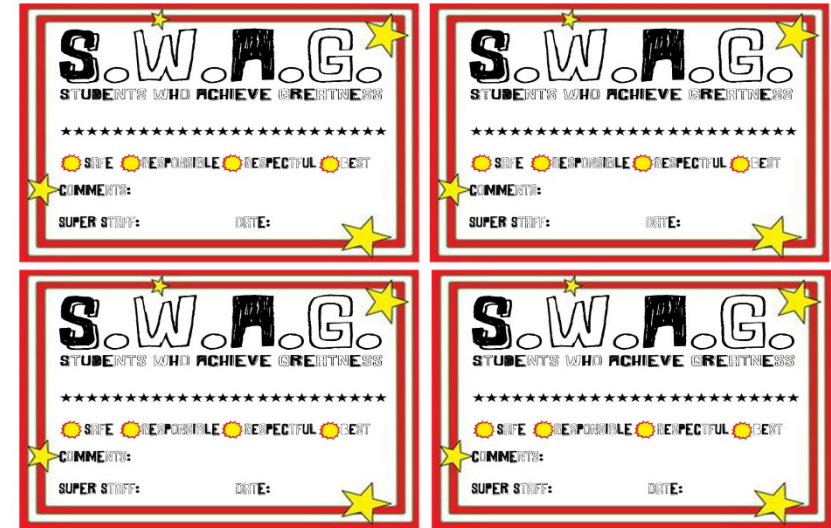
MO SW-PBS:

LEADING THE WAY

FOR STUDENT ENGAGEMENT

Heartland- *Reinforcers*

- SWAG
- Lunch with a staff member
- Candy



- Monthly PBIS celebrations based on attendance, grades, behavior
- Quarterly off-campus for those that have met criteria

MO SW-PBS:



Resources

Where do we find Resources?

- Chamber of Commerce/Community
- Various behavior models

DBT

Love & Logic

BIST

CPI

Boys' Town

Anger Replacement Therapy

Discipline with Dignity

MO SW-PBS:

LEADING THE WAY

FOR STUDENT ENGAGEMENT

Resources

The best resource is:



Sharing Ideas
Talking to Each Other

MO SW-PBS:

LEADING THE WAY

FOR STUDENT ENGAGEMENT

Contact:

Susan James, Beacon Alternative School

susanjames@joplinschools.org

Michelle Branham, Heartland Nevada

mbranham@Nevada.k12.mo.us

Frances Gooden, Finley River

francesgooden@mail.Ozark.k12.mo.us

MO SW-PBS:

LEADING THE WAY 
FOR STUDENT ENGAGEMENT