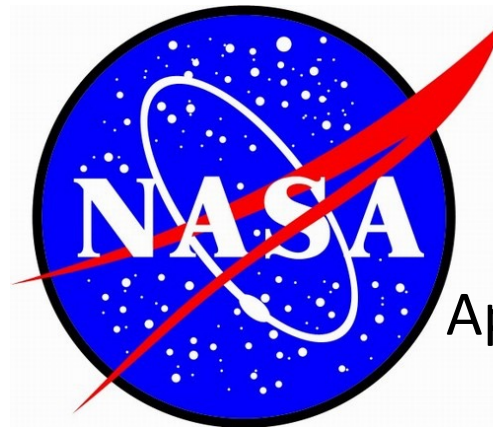
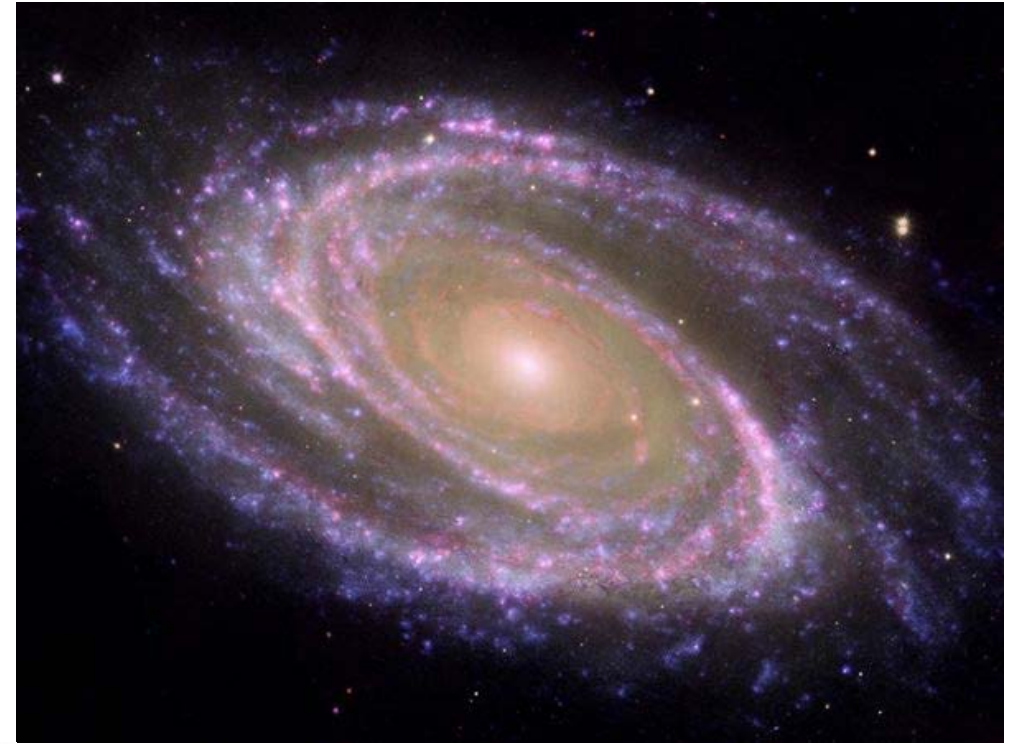




In a School District Far, Far Away...

Alternative Schools...
A GREAT place for
**POSITIVE BEHAVIOR
SUPPORTS**



Approved

MO SW-PBS:

LEADING THE WAY

FOR STUDENT ENGAGEMENT



MO SW-PBS:

LEADING THE WAY 
FOR STUDENT ENGAGEMENT



MO SW-PBS:

LEADING THE WAY 

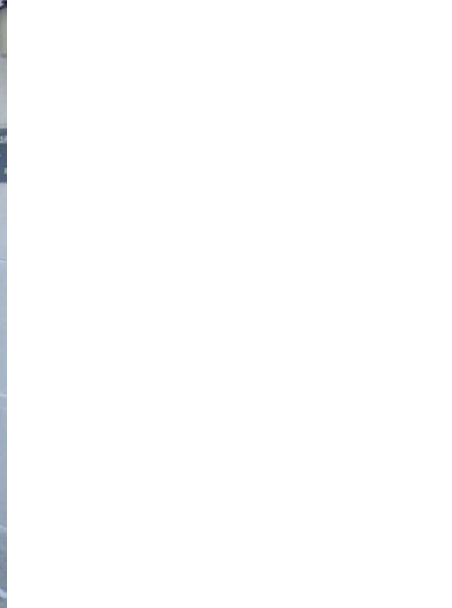
FOR STUDENT ENGAGEMENT



MO SW-PBS:

LEADING THE WAY

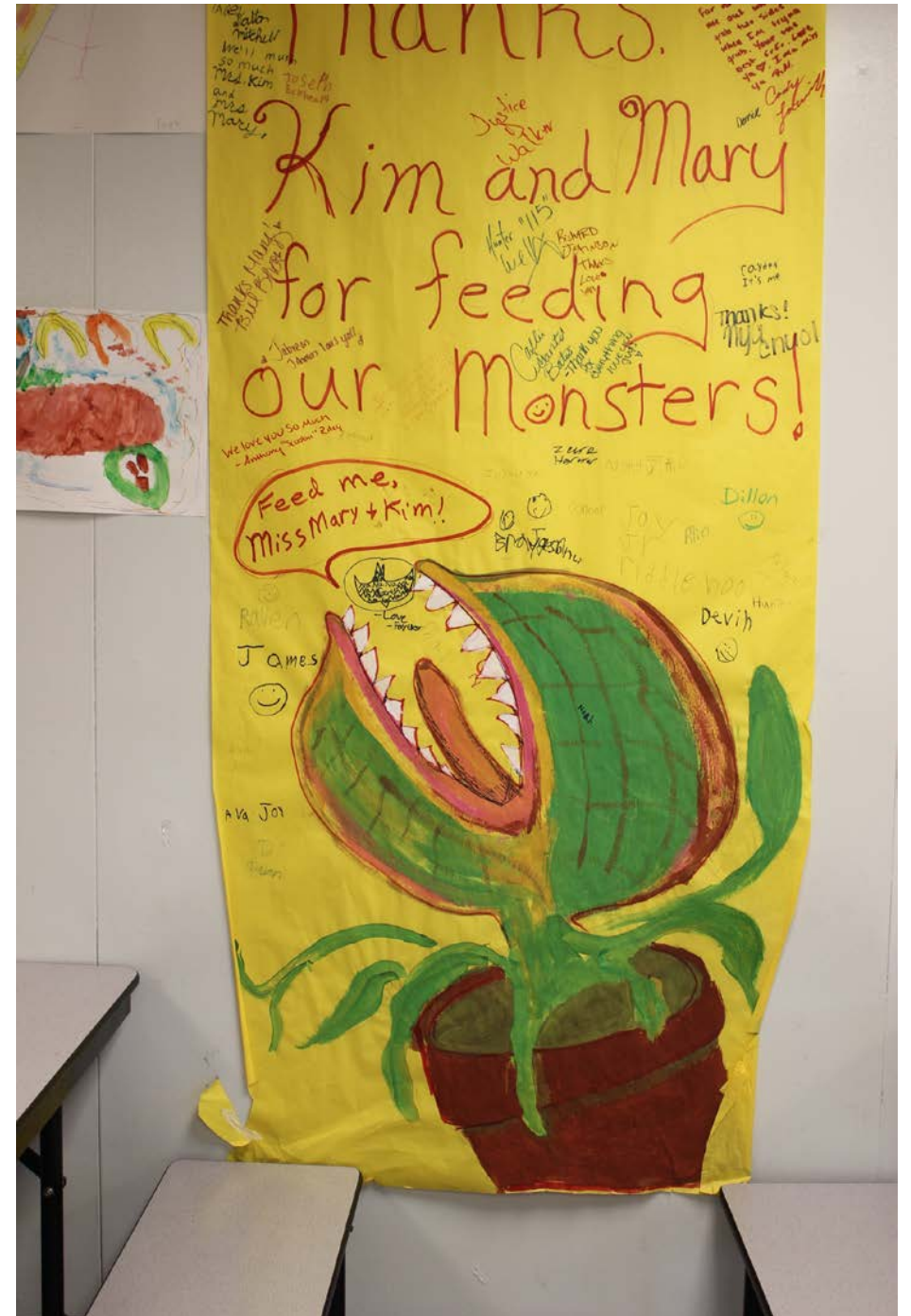
FOR STUDENT ENGAGEMENT



MO SW-PBS:

LEADING THE WAY

FOR STUDENT ENGAGEMENT





MO SW-PBS:

LEADING THE WAY

FOR STUDENT ENGAGEMENT

PBIS Expectations Matrix

Be...	All Settings	Classroom	Hallways	Cafeteria	Bathrooms	Assemblies	Bus	Playground	Parking Lot
IN CONTROL	<ul style="list-style-type: none"> Maintain Personal Space 	<ul style="list-style-type: none"> Stay in assigned area Express emotions in a positive and safe manner Keep hands and feet to yourself Use inside voice level based on situation 	<ul style="list-style-type: none"> Walk Stay to the right on the stairs and the hall Use banisters only for hands Take one step at a time 	<ul style="list-style-type: none"> Place trash in trash cans 	<ul style="list-style-type: none"> Use facilities for intended purpose 	<ul style="list-style-type: none"> Enter and exit gym in an orderly manner Sit as instructed 	<ul style="list-style-type: none"> Walk to the bus Stay in your assigned seat Use sidewalk 	<ul style="list-style-type: none"> Stay in assigned area Keep body to self Maintain voice level 	<ul style="list-style-type: none"> Maintain designate speed Walk to designated location Follow district policy of tobacco use on campus
RESPONSIBLE	<ul style="list-style-type: none"> Follow Directions 	<ul style="list-style-type: none"> Complete your work Maintain an organized work space Complete and return homework Actively participate 	<ul style="list-style-type: none"> Move to destination within 2 minutes 	<ul style="list-style-type: none"> Leave only when an adult excuses you Eat only your food Clean table and floor area when finished 	<ul style="list-style-type: none"> Wash hands after use Maintain a clean facility 	<ul style="list-style-type: none"> Give speaker your attention Applaud to show positive appreciation 	<ul style="list-style-type: none"> Report any issues Keep all objects in the bus Wait your turn when entering and exiting the bus Keep possessions in your backpack 	<ul style="list-style-type: none"> Use equipment as intended Report broken equipment Model positive behavior 	<ul style="list-style-type: none"> Flow with traffic Place trash in trash cans
RESPECTFUL	<ul style="list-style-type: none"> Be an active listener 	<ul style="list-style-type: none"> Raise your hand Use positive language and tone Wait your turn Use property for specified use Get permission before borrowing supplies 	<ul style="list-style-type: none"> Voice level "zero" 	<ul style="list-style-type: none"> Use proper manners Use a Level 1 voice if permitted 	<ul style="list-style-type: none"> Respect the needs of others 	<ul style="list-style-type: none"> Focus on topic at hand Sit so others can see Be courteous Voice level "zero" 	<ul style="list-style-type: none"> Respect other's property Respect bus property Communicate positively with other passengers and community members 	<ul style="list-style-type: none"> Share equipment Interact positively with peers Use acceptable language Respect others while using equipment 	<ul style="list-style-type: none"> Park in designated areas Use only one parking space Exit in a safe manner Respect other's property
HONEST	<ul style="list-style-type: none"> Tell the truth at all times 	<ul style="list-style-type: none"> Keep independent work to yourself 	<ul style="list-style-type: none"> Go where you say you are going to go 	<ul style="list-style-type: none"> Take only as much food as you are supposed to Report messes 	<ul style="list-style-type: none"> Report messes 	<ul style="list-style-type: none"> Give positive feedback 	<ul style="list-style-type: none"> Get on and off at your designated stop 	<ul style="list-style-type: none"> Report something you broke Play by the rules of the game Report all problems and incidents 	<ul style="list-style-type: none"> Ride only in authorized vehicle Report criminal activity Report accidents

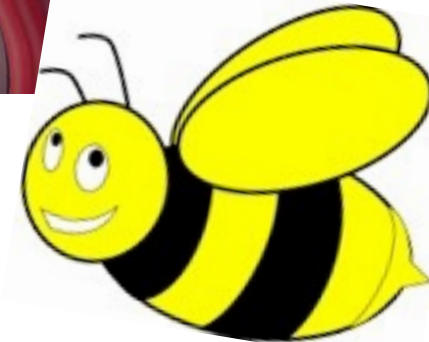
In Control



Responsible



Respectful



SAFE

MO SW-PBS:

LEADING THE WAY

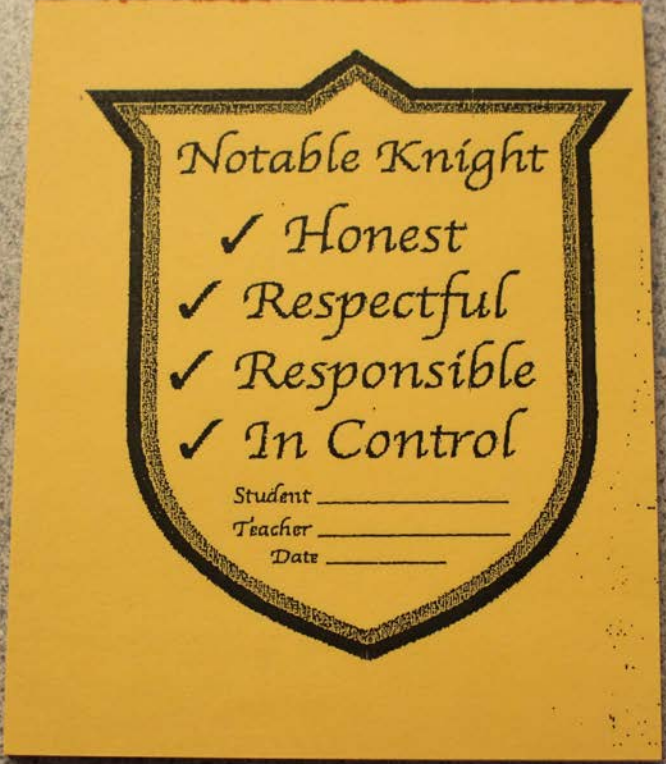
FOR STUDENT ENGAGEMENT



MO SW-PBS:

LEADING THE WAY

FOR STUDENT ENGAGEMENT



Menu of Reinforcers - Secondary

Pencil	10
New Folder	15
New Lanyard	25
Mechanical Pencil	25
Chew Gum for a day	25
Wear a hat for a day	25
Read to a younger kid	45
Sit in a rolling chair for a day	50
Free Homework Pass (for one class)	50
Go to recess with a younger kid	50
Help another teacher for an hour	60
Play basketball with a teacher	70
Read a book in every class	175

MO SW-PBS:



FOR STUDENT ENGAGEMENT



MO SW-PBS:

LEADING THE WAY

FOR STUDENT ENGAGEMENT



MO SW-PBS:

LEADING THE WAY 

FOR STUDENT ENGAGEMENT



MO SW-PBS:

LEADING THE WAY

FOR STUDENT ENGAGEMENT



When you

enter this

school...

You are

Scientists

You are

EXPLORERS

You are

RESPECTED

You are

important

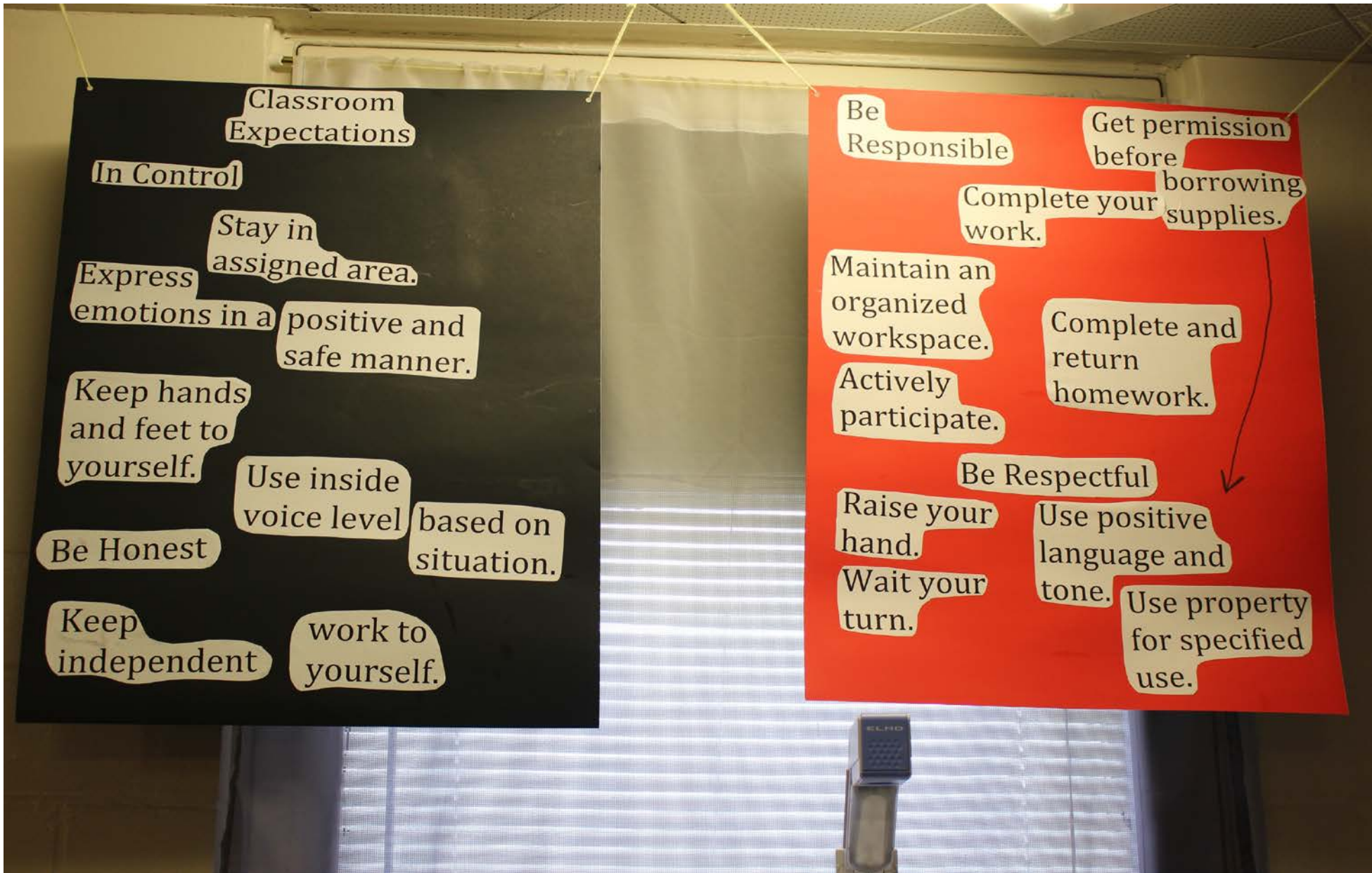
You are

Loved

MO SW-PBS:

LEADING THE WAY

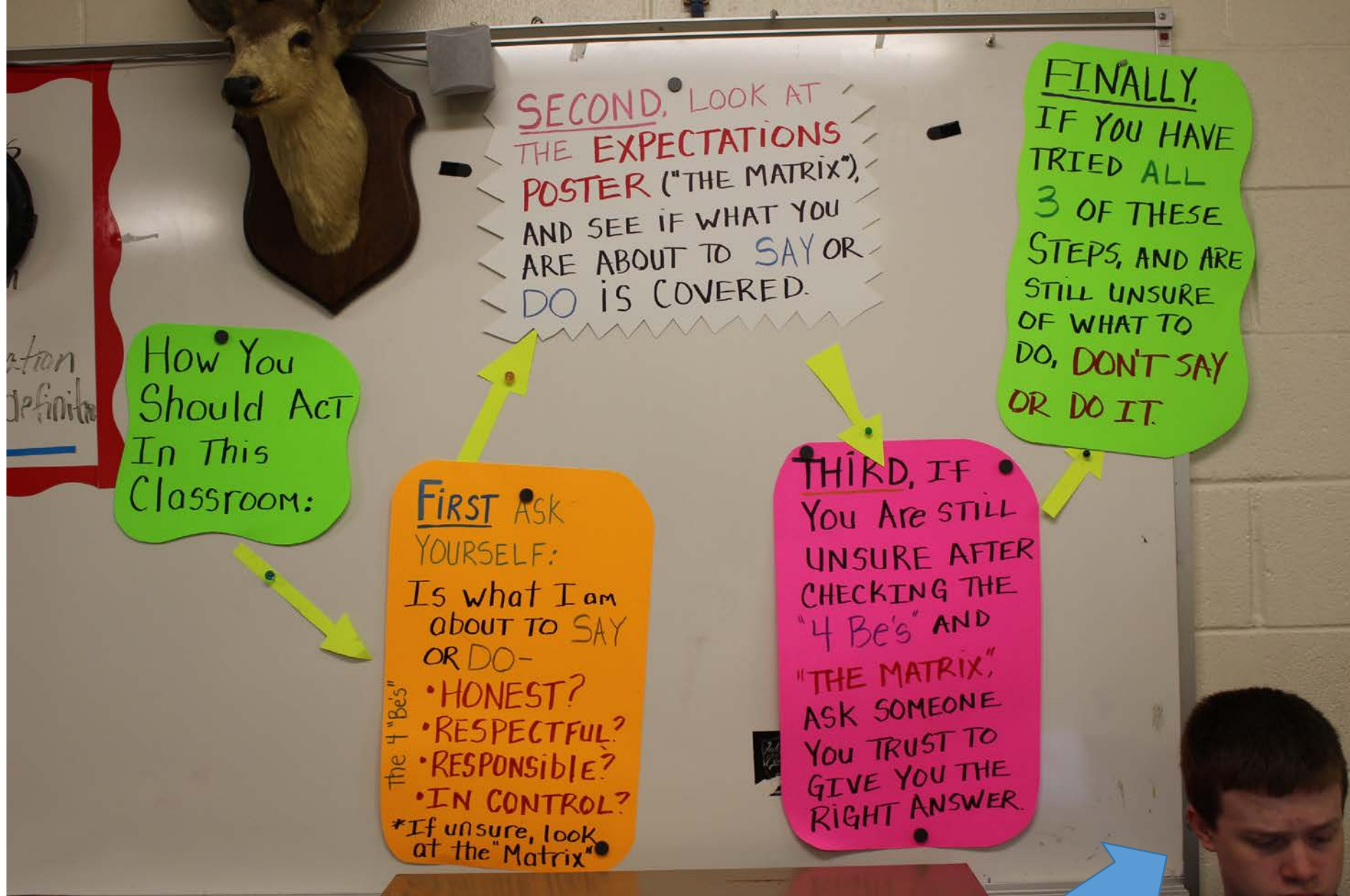
FOR STUDENT ENGAGEMENT



MO SW-PBS:

LEADING THE WAY

FOR STUDENT ENGAGEMENT



MO SW-PBS:

LEADING THE WAY

FOR STUDENT ENGAGEMENT



MO SW-PBS:

LEADING THE WAY
FOR STUDENT ENGAGEMENT



MO SW-PBS:

LEADING THE WAY

FOR STUDENT ENGAGEMENT



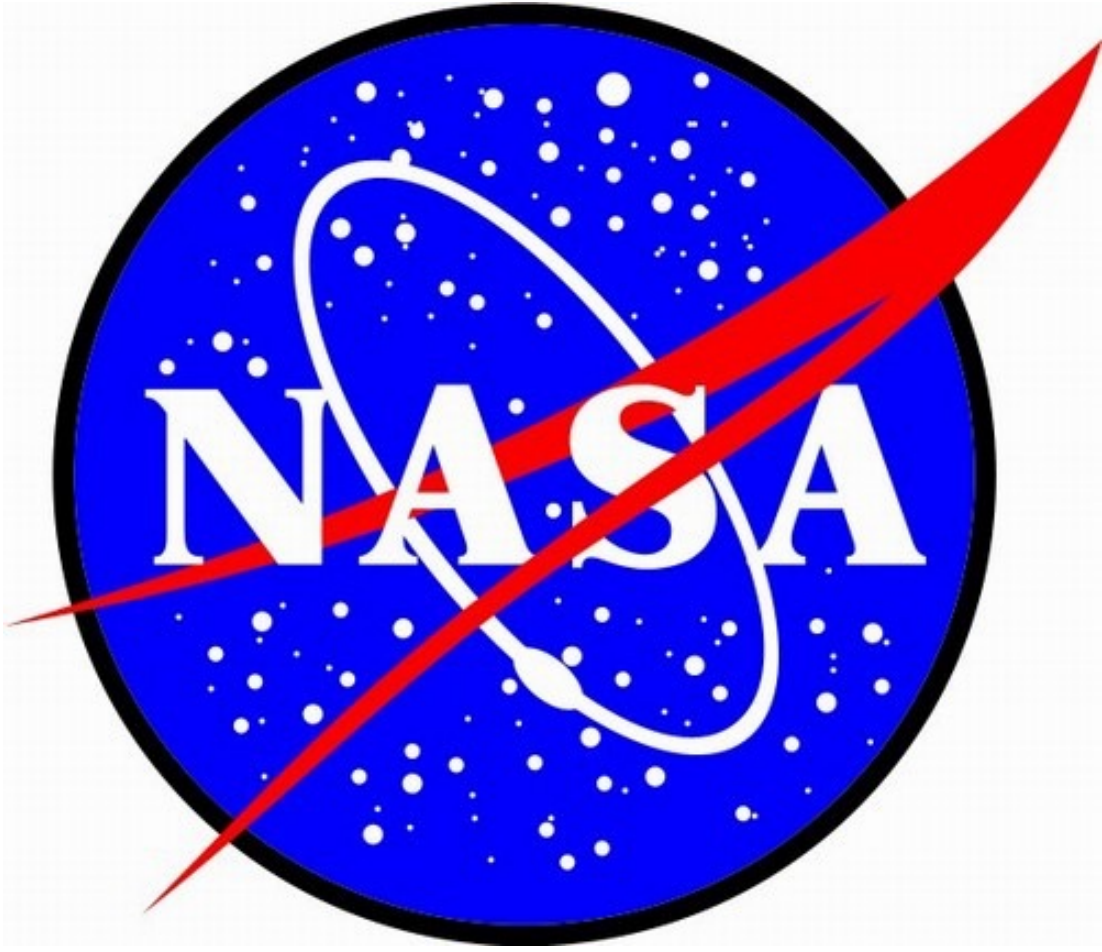
Knights Rule!



MO SW-PBS:

LEADING THE WAY

FOR STUDENT ENGAGEMENT



Contact Information:

Debbie Lyons,

PBIS Tier 2/3

Regional Consultant

lyonsdc@missouri.edu

816-676-8191

MO SW-PBS:



FOR STUDENT ENGAGEMENT