

Social Media



Moving past fear to innovate, crowdsource and celebrate success.

MO SW-PBS:

LEADING THE WAY

FOR STUDENT ENGAGEMENT

OBJECTIONS

- ✓ Waste of time
- ✓ No purpose
- ✓ Self-serving
- ✓ Unprofessional
- ✓ Risky



MO SW-PBS:

LEADING THE WAY

FOR STUDENT ENGAGEMENT

Who is telling your school's story?



MO SW-PBS:

LEADING THE WAY

FOR STUDENT ENGAGEMENT

Engage Your Constituents



MO SW-PBS:

LEADING THE WAY

FOR STUDENT ENGAGEMENT

BIG IDEA #1

Professional Development

MO SW-PBS:

LEADING THE WAY

FOR STUDENT ENGAGEMENT



Tweeting to Learn and Connect



TUESDAYS (9 EST, 8 CST, 7 MST, 6 PST)

Using the power of social media to connect, encourage, and discuss best practices related to PBIS in schools.



Matt Bush
@mbush36

 Follow

A6: Technology has allowed everything to become real and build relevancy with staff! Help shape PD and use of PBIS team

[#pbischat](#)

8:42 PM - 19 Apr 2016



ARCHIVES

- April 26, 2016 [Tier 3: Reaching the Top & Learning to Climb Down](#)
- April 19, 2016 [Get Connected: Social Media & PBIS](#)
- April 12, 2016 [Restarting a PBIS Initiative](#)
- April 5, 2016 [Getting Started: Exploring PBIS](#)
- March 29, 2016 [The Administrator's Role in PBIS](#)
- March 22, 2016 [Professional Development that Works](#)
- March 15, 2016 [Alternatives to Suspension and Expulsion](#)
- March 8, 2016 [The "Art" of Surviving March Madness](#)

MO SW-PBS:

LEADING THE WAY


FOR STUDENT ENGAGEMENT






Researching with Pinterest

7 Boards 150 Pins 0 Likes 5 Followers 7 Following

Student Leadership Team




23



Edit



Incentives



36


Dance Celebration

Students enjoyed open dancing during lunch today in celebration of a 97% attendance rate Wednesday, September 10th. A day of open seating!






Edit

GRReat Student of the Week!




69






Edit

Quarterly Celebrations




9






Edit

GRR Film Festival



5



the 2015 Spring BS Film Festival
May 1, 2015

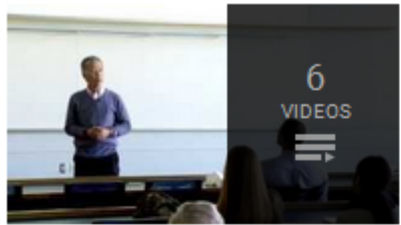
Edit

MO SW-PBS:



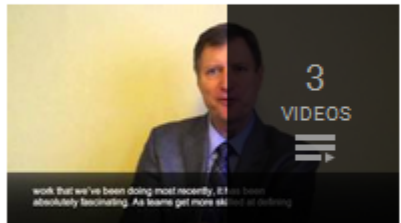


Virtual PD Opportunities



Sugai, George

- Faculty Talks -- George Sugai 50:31
- Improving the Impact of Evidence-based Practices: Tiered systems of support 1:09:07
- George Sugai - 3 Keys Plus 2014 - DMSELPA 1:48:13
- [View full playlist \(6 videos\)](#)



Horner, Robert

- What should we consider when developing information systems to support studen... 2:31
- How can data systems help teams track behavior data? 7:38
- 2013 03 Dr Rob Horner 3 Keys II 1:38:51
- [View full playlist \(3 videos\)](#)



Lewis, Tim

- ODE - Basic considerations for SW-PBIS 9:22
- ODE - Historical difficulties in dealing with behavior 3:27
- ODE - Challenges: academic excellence & behavioral support 4:26
- [View full playlist \(12 videos\)](#)

MO SW-PBS:

LEADING THE WAY
FOR STUDENT ENGAGEMENT

APBS Association for Positive Behavior Support
April 15 at 7:21pm

Time to unleash another new video from this year's conference! This week, we are featuring a presentation from #APBS2016 on problem solving for improving tiers 1 and 2 from this year's E. G. Carr Initial Researcher Award Winner, Sara McDaniel. Check it out below, and have a great weekend!

A1 - An Ounce of Prevention: Problem Solving for Improving Tiers 1 and 2 Sara McDaniel, University of Alabama... [See More](#)

What we risk without tiers 1 and 2 in place

- Negative, punitive school climate
- Poor teacher satisfaction
- Over identifying students for tiers 2 & 3
- Tier 3 > 5%
- Teachers can't teach and students can't learn
- Over use of exclusionary discipline
 - Office discipline referrals
 - Expulsion
 - Alternative setting placement

A1 - An Ounce of Prevention: Problem Solving for Improving Tiers 1 and 2
VIMEO.COM

Like Comment Share

22 Chronological



Visible Learning with Blogging

EXCELSIOR SPRINGS MIDDLE SCHOOL
Positive Behavioral Interventions & Supports

HOME ABOUT US TEACHER LEADERSHIP STUDENT LEADERSHIP VIDEOS INSTAGRAM CELEBRATIONS RESOURCES RESEARCH MISSOURI SW-PBS

June 26, 2012

The Elephant in the #PBIS Room

Following the Missouri School-wide PBS Summer Institute, I noticed a lot of discussion about the effectiveness of PBS practices on social media. Comments centered on the efficacy of the initiative because, in their opinion, PBS focuses exclusively on **extrinsic motivation**. Writers such as [Alfie Kohn](#) and [Daniel Pink](#) were offered as spokespersons for the anti-incentive position.



Resources & Links from ESMS

- Search for Blog Posts by Topic
- Our PBIS Journey (2007-present)
- Positive Behavior Support Brochure
- Multi-Tiered System of Supports
- Transfer Student Induction Model
- Social Skill Lesson Schedules
- Continuum of Consequences

Tweets by @TigerPBIS

TigerPBIS Retweeted

pbischat @pbischat
Join the discussion tonight at #pbischat as we explore Tier 3 Supports. #edchat #cpchat #MTSS

1. Despite a strong PBIS foundation, some do still need intensive Tier 3 support. What challenging behaviors do you see at your school?
2. In what ways has PBIS helped with supporting students with intensive, individualized needs?
3. What tools assist you when conducting a functional behavior assessment to identify setting events, antecedents, behaviors & consequences?
4. Why are functions such as "power", "control" & "revenge" inappropriate?
5. Share some interventions you've used for peer or adult attention maintained behaviors?
6. What are some interventions for escape (avoidance) maintained behaviors?
7. Tier 3 supports can include Person-centered Planning or Wtsparound. Explain how you use either or both.
8. What do you wish you knew more about when it comes to supporting students with intensive behavioral needs?

EXCELSIOR SPRINGS MIDDLE SCHOOL
Positive Behavioral Interventions & Supports

HOME ABOUT US TEACHER LEADERSHIP STUDENT LEADERSHIP VIDEOS INSTAGRAM CELEBRATIONS RESOURCES RESEARCH MISSOURI SW-PBS

July 9, 2015

Problems of Practice

A significant change to school-wide problem solving procedures was implemented last year at Excelsior Springs Middle School. Since the implementation of PBIS in 2008 we have used elements of **BIST** (Behavior Intervention Support Team) and **Fred Jones Tools for Teaching** to support the development and maintenance of a focused learning environment in each classroom. As our implementation of PBIS progressed we had to address a philosophical rift that emerged between core PBIS principles and what appeared to be inconsistent application of BIST procedures in the classroom.



Resources & Links from ESMS

- Search for Blog Posts by Topic
- Our PBIS Journey (2007-present)
- Positive Behavior Support Brochure
- Multi-Tiered System of Supports
- Transfer Student Induction Model
- Social Skill Lesson Schedules
- Continuum of Consequences

Tweets by @TigerPBIS

TigerPBIS Retweeted

pbischat @pbischat
Join the discussion tonight at #pbischat as we explore Tier 3 Supports. #edchat #cpchat #MTSS

1. Despite a strong PBIS foundation, some do still need intensive Tier 3 support. What challenging behaviors do you see at your school?
2. In what ways has PBIS helped with supporting students with intensive, individualized needs?
3. What tools assist you when conducting a functional behavior assessment to identify setting events, antecedents, behaviors & consequences?
4. Why are functions such as "power", "control" & "revenge" inappropriate?
5. Share some interventions you've used for peer or adult attention maintained behaviors?
6. What are some interventions for escape (avoidance) maintained behaviors?
7. Tier 3 supports can include Person-centered Planning or Wtsparound. Explain how you use either or both.
8. What do you wish you knew more about when it comes to supporting students with intensive behavioral needs?

MO SW-PBS:

LEADING THE WAY

FOR STUDENT ENGAGEMENT



Virtual Networking



MO SW-PBS:



Managing Social Media Content



MO SW-PBS:

LEADING THE WAY 

FOR STUDENT ENGAGEMENT



BIG IDEA #2

Student Voice

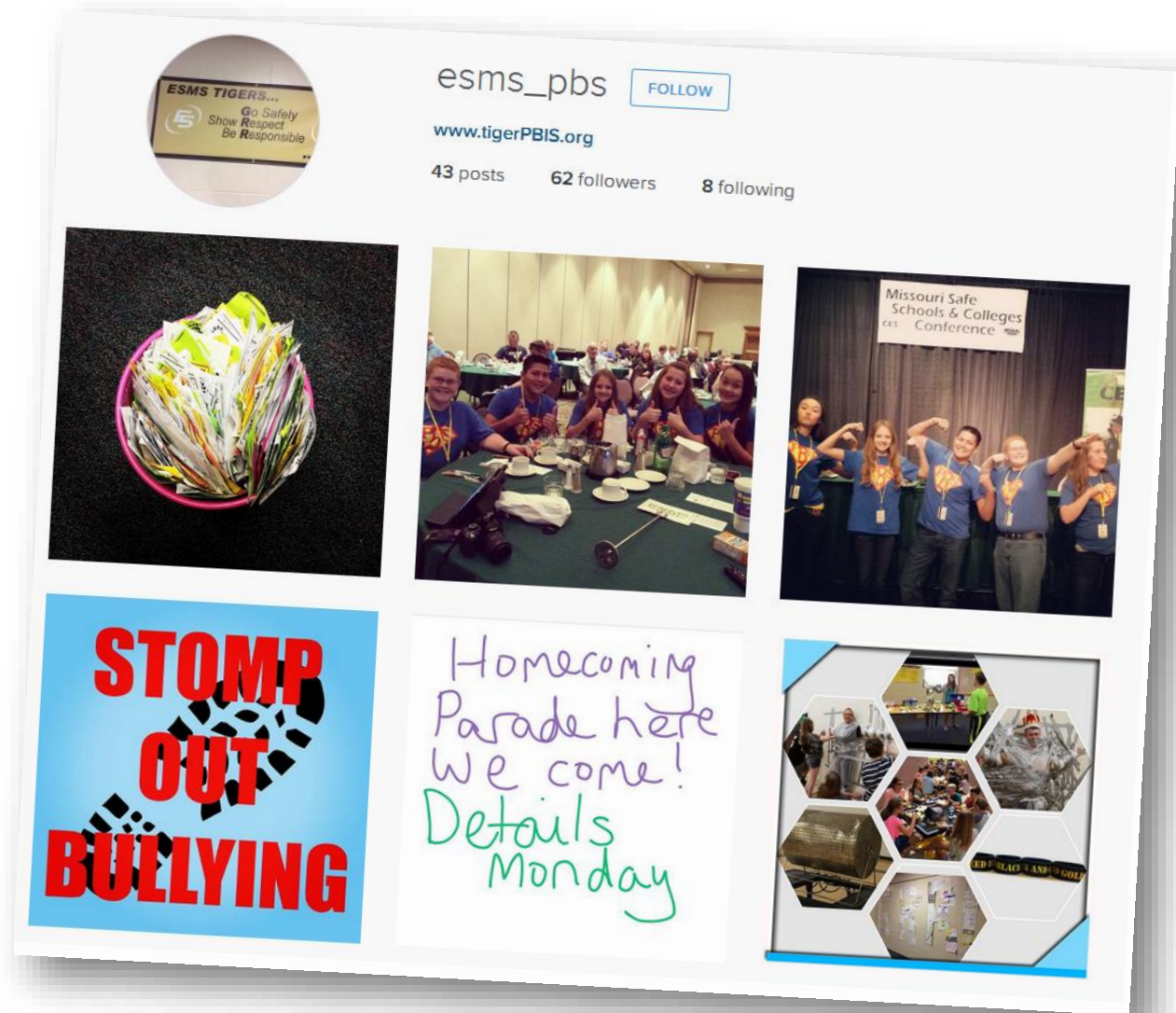
MO SW-PBS:

LEADING THE WAY

FOR STUDENT ENGAGEMENT



Instagram: Student Teams



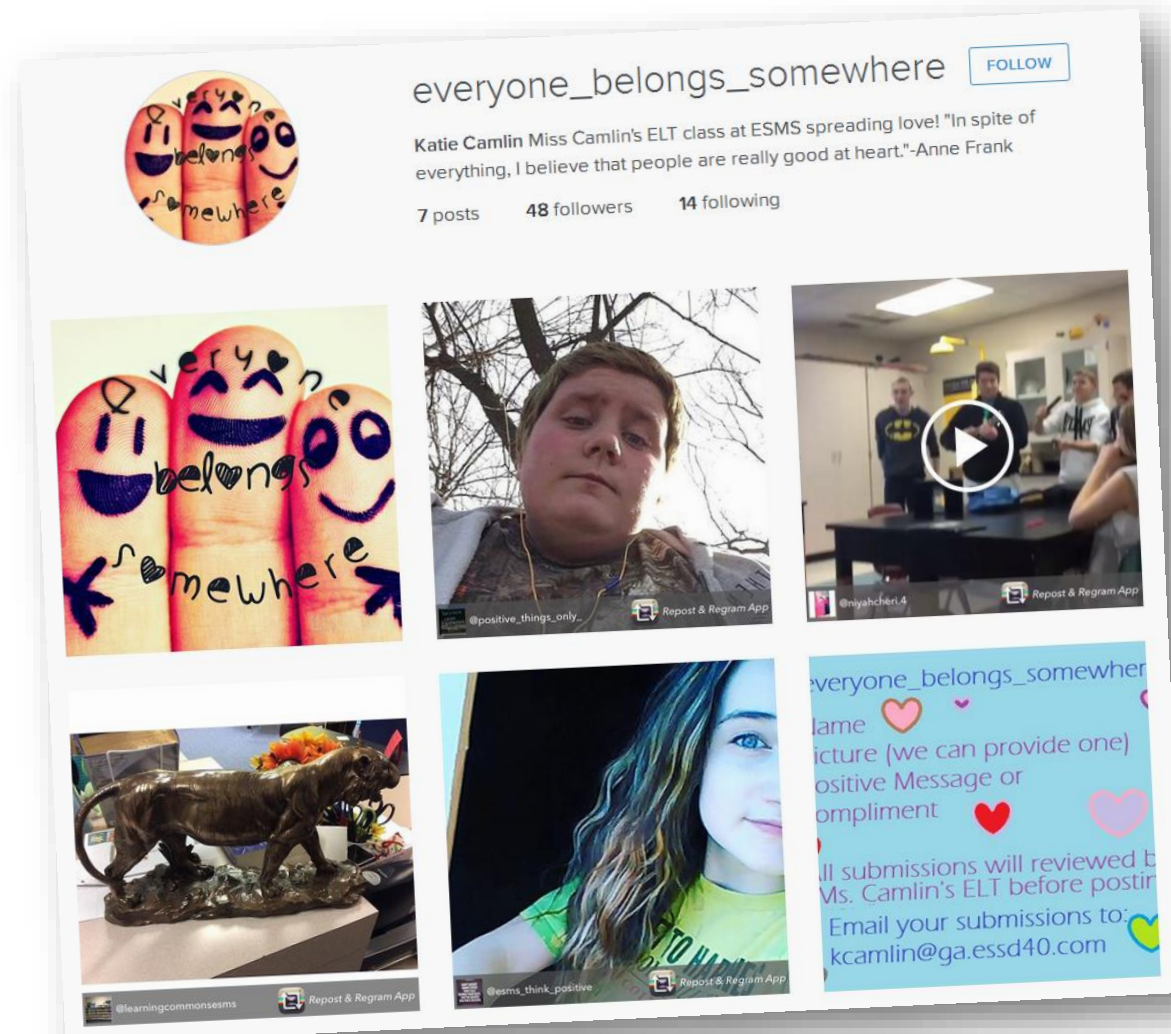
MO SW-PBS:

LEADING THE WAY

FOR STUDENT ENGAGEMENT



Instagram: Bully Prevention



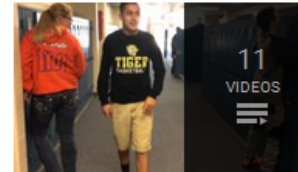
MO SW-PBS:

LEADING THE WAY

FOR STUDENT ENGAGEMENT

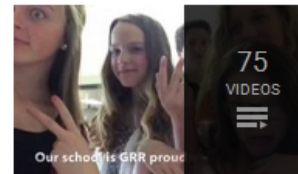


Project-Based Learning



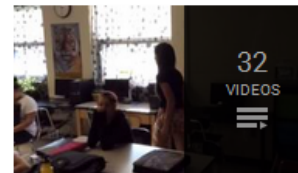
PBIS (2015-2016)

Hallway Expectations	2:42
PBS Leaders 15-16	1:19
Tiger Paw Raffle	1:09
View full playlist (11 videos)	



PBIS (2014-2015)

McCracken - Tiger Family	1:42
Egbert - Safety	2:29
Dickel - Respect	3:16
View full playlist (75 videos)	



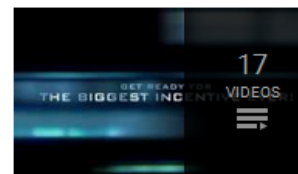
ESMS PBS Film Festival 2014

Wilkins safe seat	1:00
Kirkpatrick Respect	0:54
Classroom Distractions - Skillman	3:13
View full playlist (32 videos)	



Bully Prevention (2014)

Wear Your Tiger Pride	0:50
View full playlist (1 video)	



PBIS (2013-2014)

Who Will Get Your Vote?	1:05
Talent Show Expectations	2:43
GRRage Sale	2:09
View full playlist (17 videos)	

MO SW-PBS:

LEADING THE WAY

FOR STUDENT ENGAGEMENT

BIG IDEA #3

Stakeholder Communication

MO SW-PBS:

LEADING THE WAY

FOR STUDENT ENGAGEMENT



Menu of Social Media Channels



ms.essd40

barrel__racer_12, sara_9_14, imisabelleparsons, hailey__d, _tristansykes_ shroyer__girl and _madeline_evert_ like this

ms.essd40 Congratulations to Annika Thorsen, our GRReat Student of the Week for the week of February 16-19.

Log in to like or comment.



February 19, 2016



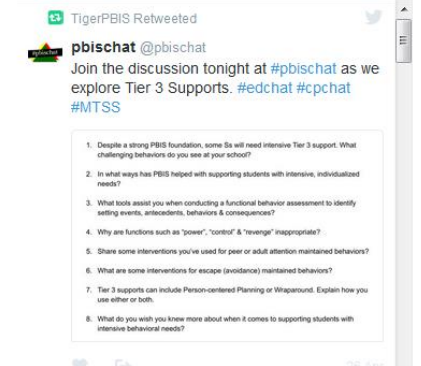
GRReat Student of the Week

Congratulations to Annika Thorsen, our GRReat Student of the Week for the week of February 16-19. Each week a GRReat Student is chosen. A student will have his or her name drawn from a list of teacher nominations along with Tiger Paws turned in throughout the week. Students chosen must have no major or minor referrals.

Resources & Links from ESMS

- Search for Blog Posts by Topic
- Our PBIS Journey (2007-present)
- Positive Behavior Support Brochure
- Multi-Tiered System of Supports
- Transfer Student Induction Model
- Social Skill Lesson Schedules
- Continuum of Consequences

Tweets by @TigerPBIS



Excelsior Springs Middle School

Congratulations to Annika Thorsen, our GRReat Student of the Week for the week of February 16-19. <http://www.igpsd.org/2016/02/19/grreat-student-of-week.html>

Like Comment Share

Shelley Anderson Dobson, Kaleb Duddy and 14 others

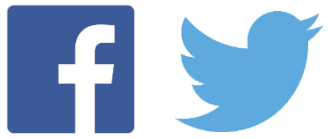
2 shares

Write a comment.



MO SW-PBS:

LEADING THE WAY
FOR STUDENT ENGAGEMENT



Drive Traffic to PBIS Content

Excelsior Springs Middle School
Published by Chris Hubbuch [?] · April 20 at 7:39am ·

GRR in Focus: Review of Data from 2014-present
<http://www.tigerpbis.org/2016/04/20.html>

107 people reached Boost Post

Like Comment Share

Sandie Biehl and 2 others

1 share

Write a comment...

TigerPBIS @TigerPBIS Following

GRR in Focus: Review of Data from 2014-present tigerpbis.org/2016/04/20.html

8:36 PM · 20 Apr 2016



EXCELSIOR SPRINGS MIDDLE SCHOOL
Positive Behavioral Interventions & Supports

HOME ABOUT US TEACHER LEADERSHIP STUDENT LEADERSHIP VIDEOS INSTAGRAM CELEBRATIONS RESOURCES RESEARCH MISSOURI SW-PBS

April 20, 2016

GRR in Focus: Review of Data from 2014-present

With 22 days remaining in the 2015-16 school year there have been 312 major ODRs. The projected end of year total is 357, the lowest total since implementation of PBIS in 2008. There have been 1484 minor ODRs this year with a projected end of year total of 1699. That is the lowest total of minor ODRs in six years at ESMS.

ODRs for Major Problem Behaviors	15-16	14-15
6th Grade	114	153
7th Grade	99	124
8th Grade	99	144
Totals	312	421

ODRs for Minor Problem Behaviors	15-16	14-15
6th Grade	396	553
7th Grade	523	831
8th Grade	565	678
Totals	1484	2062

Through 151 days, 90.6% of students have received 0-1 major ODRs and 80% of students have no major ODRs. This is a marked improvement over the previous school year. During the 2014-15 school year 87.7% of students had 0-1 major ODRs and 76.4% of students had no major ODRs. We are very proud of our students for their leadership, focus, and demonstration of the GRR expectations this year at ESMS.

Resources & Links from ESMS

- Search for Blog Posts by Topic
- Our PBIS Journey (2007-present)
- Positive Behavior Support Brochure
- Multi-Tiered System of Supports
- Transfer Student Induction Model
- Social Skill Lesson Schedules
- Continuum of Consequences

Tweets by @TigerPBIS

TigerPBIS Retweeted

pbischat @pbischat
Join the discussion tonight at #pbischat as we explore Tier 3 Supports. #edchat #cpchat #MTSS

- Develop a strong PBIS foundation, some. So will need intensive Tier 3 support. What challenging behaviors do you see at your school?
- In what ways has PBIS helped with supporting students with intensive, individualized needs?
- What tools assist you when conducting a functional behavior assessment to identify setting events, antecedents, behaviors & consequences?
- Why are functions such as "power", "control" & "revenge" inappropriate?
- Share some interventions you've used for peer or adult attention maintained behaviors?
- What are some interventions for escape (avoidance) maintained behaviors?
- Tier 3 supports can include Person-centered Planning or Wraparound. Explain how you use either or both.
- What do you wish you knew more about when it comes to supporting students with intensive behavioral needs?

MO SW-PBS:

LEADING THE WAY

FOR STUDENT ENGAGEMENT

LIKELY BENEFITS

- ✓ Optimize PBIS efforts
- ✓ Multiple tools for learning
- ✓ Tell your school's story
- ✓ Connect with experts
- ✓ Celebrate students and staff
- ✓ All of this is free!



MO SW-PBS:

LEADING THE WAY

FOR STUDENT ENGAGEMENT

“Chance favors the connected mind.”



Stephen Johnson



MO SW-PBS:

LEADING THE WAY

FOR STUDENT ENGAGEMENT