




Navigating Barriers  
**of SWPBS** 




Daniel Rector  
Assistant Principal


# WEST MIDDLE

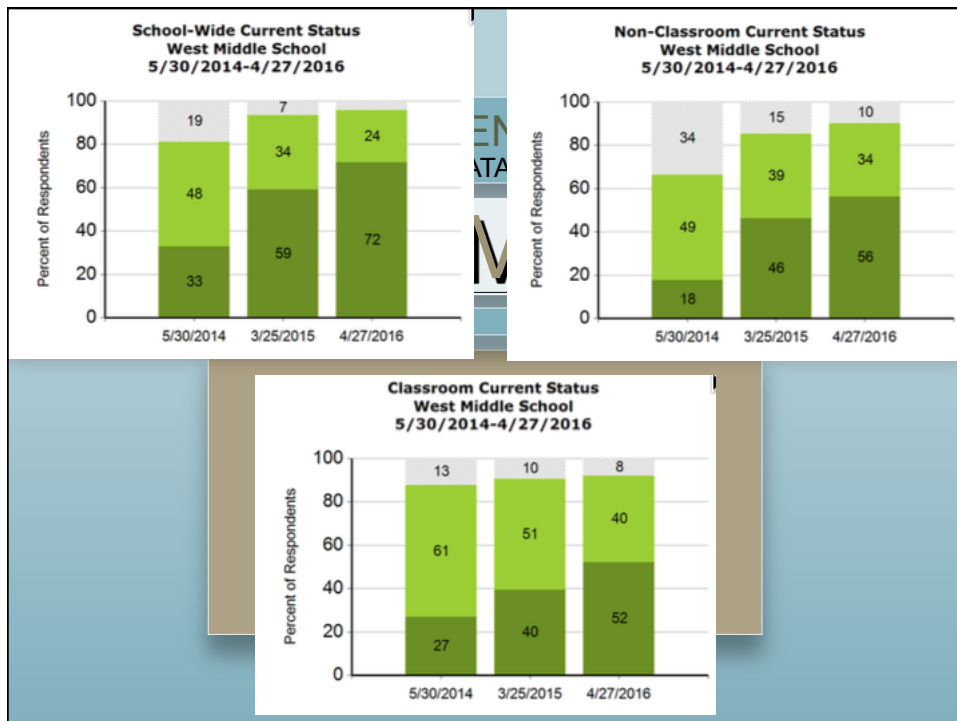
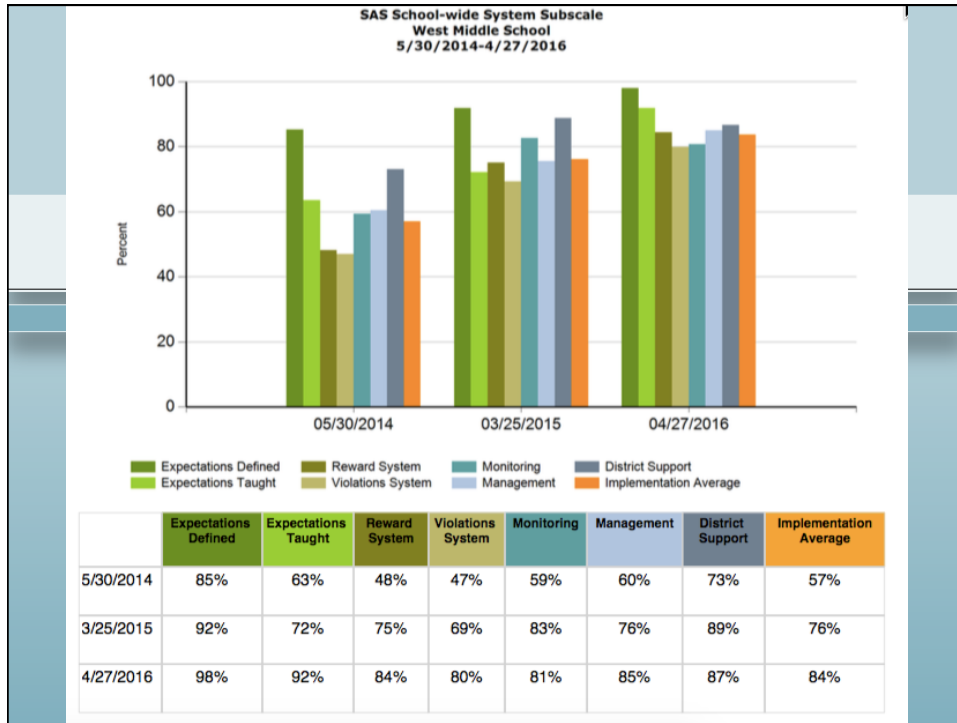
Staff: 50+ teachers, 75+ overall  
Students: 630                      Grades: 6-8

Demographics:  
- American Indian 1%, Asian 3%, Black 24%,  
Hispanic 6%, White 62%  
- F/RL: 42%, ELL 2 %, 504 4%, IEP 12%, Gifted 15%

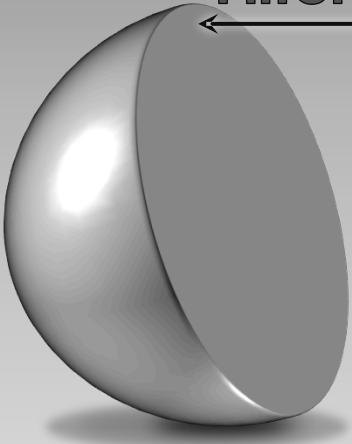


**West Middle School**  
Live...Learn...Become.





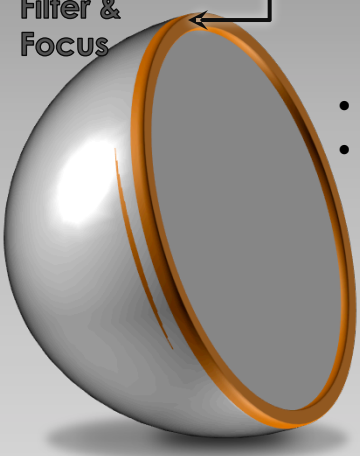
## Filter & Focus



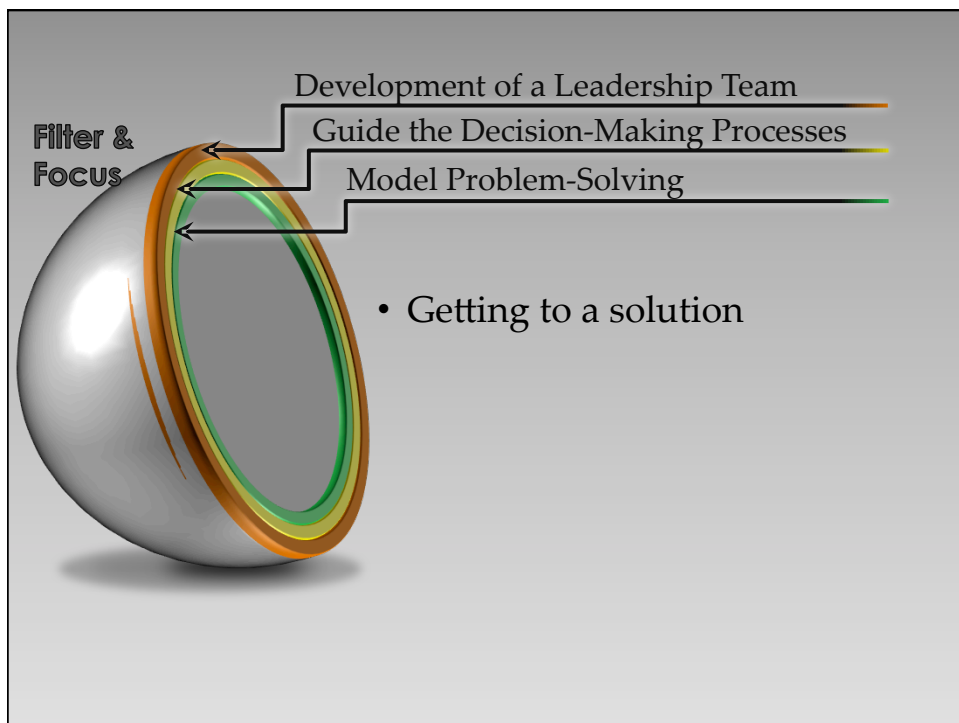
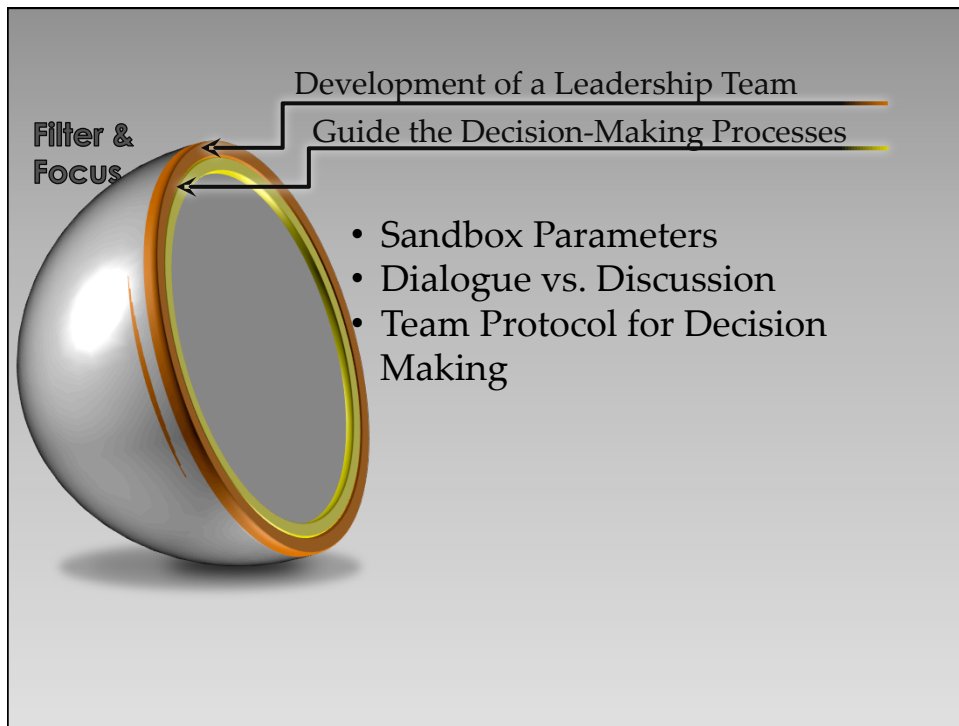
- Maintain Standards
- Make a Public Statement of Support

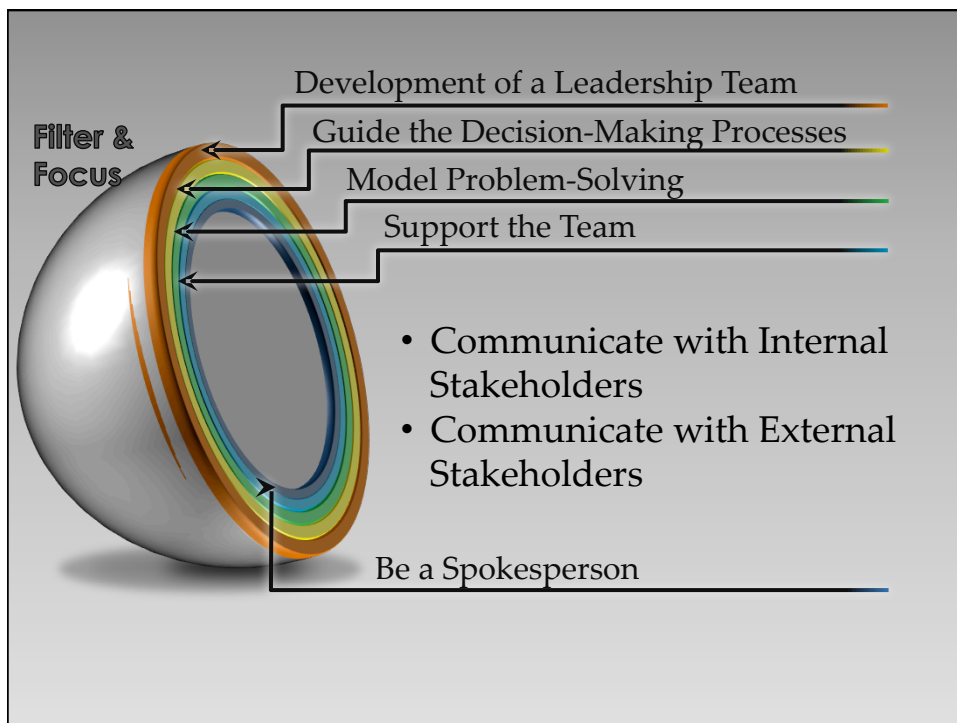
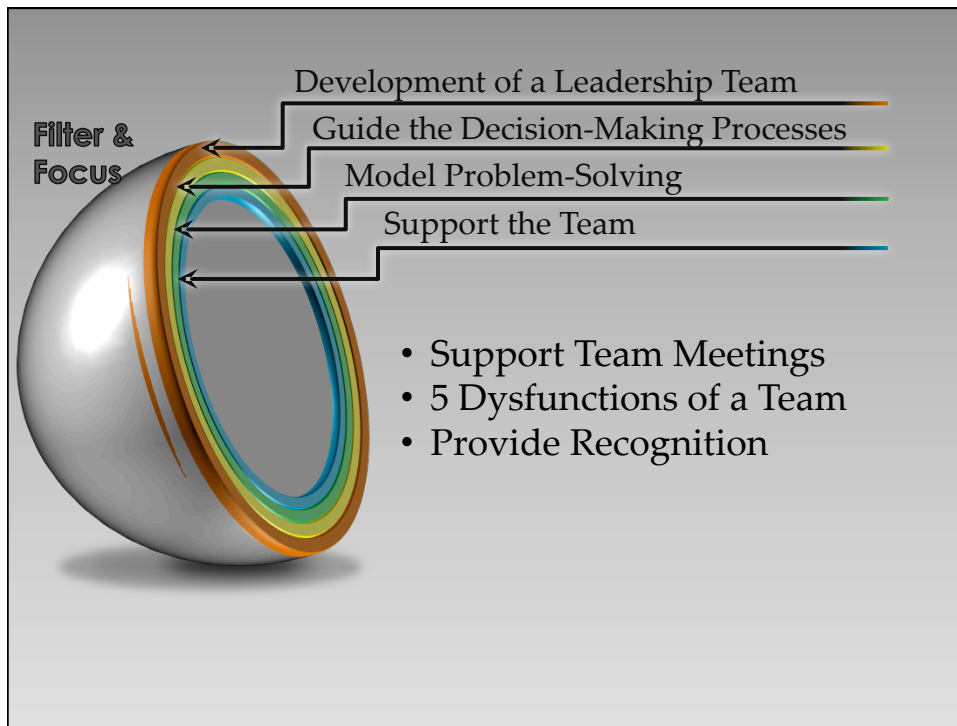
## Development of a Leadership Team

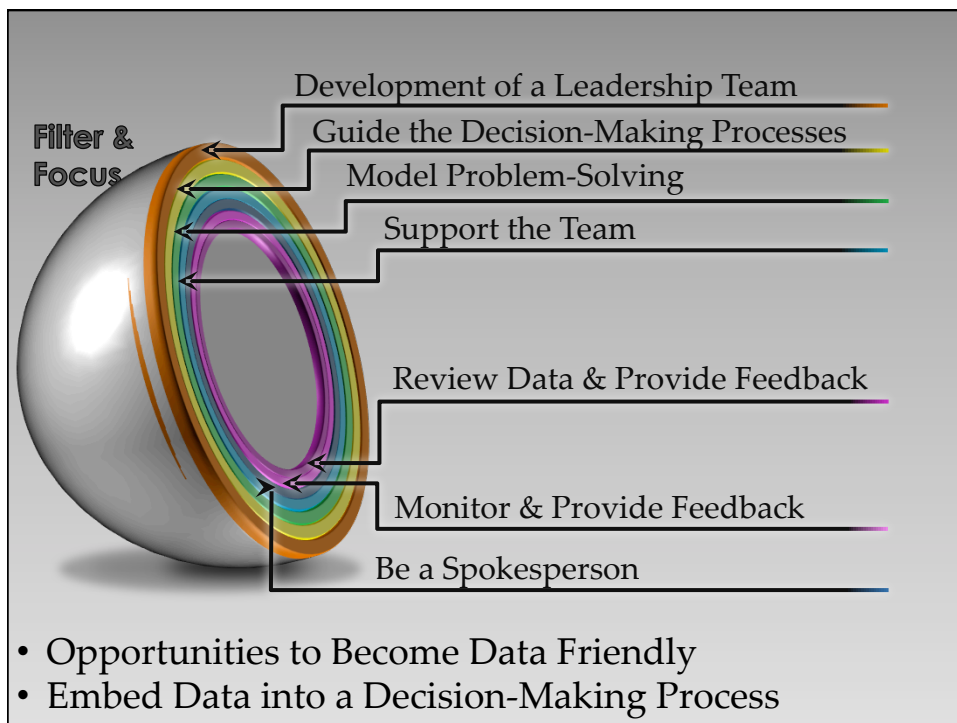
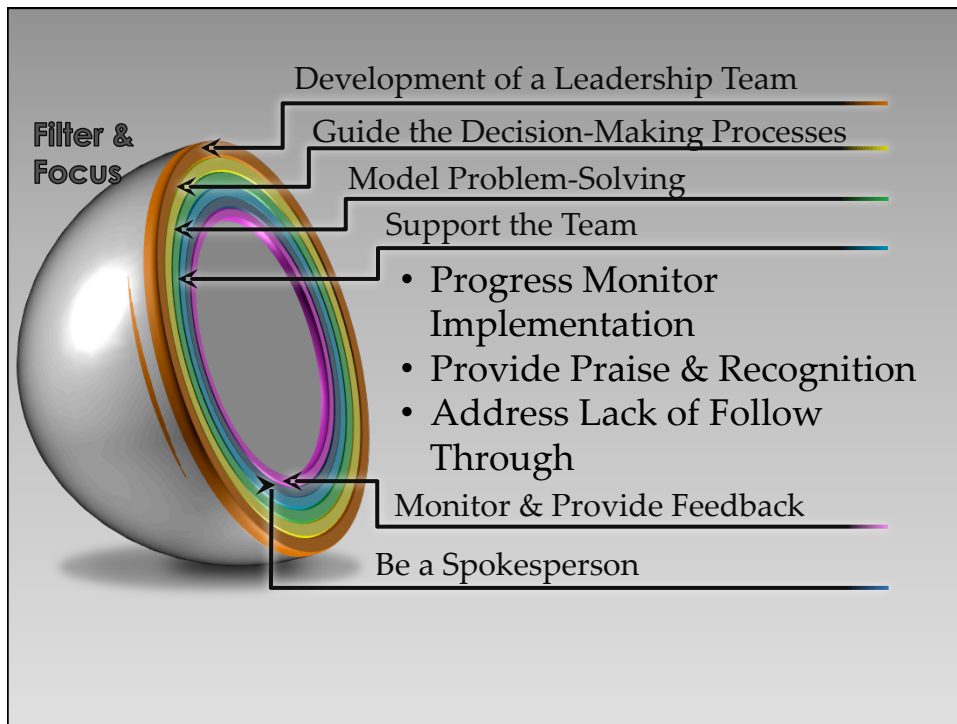
Filter & Focus

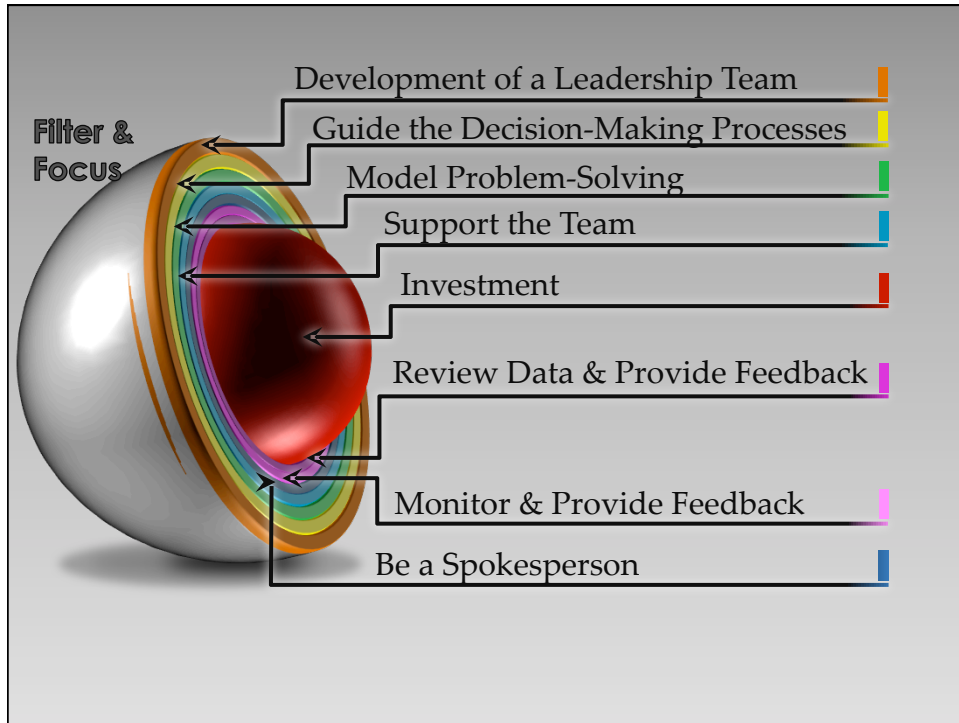


- Establish a Leadership Team
- Support the Team Members







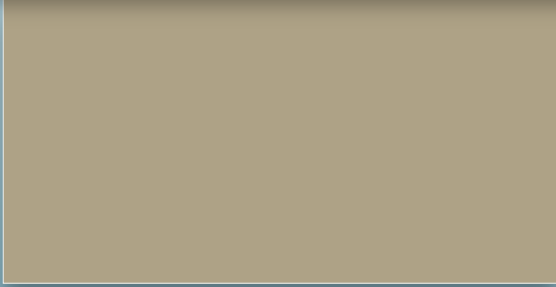


Questions so far...



Theory Application

# SUMMER PLANNING



**Summer Planning**  
Theory Application

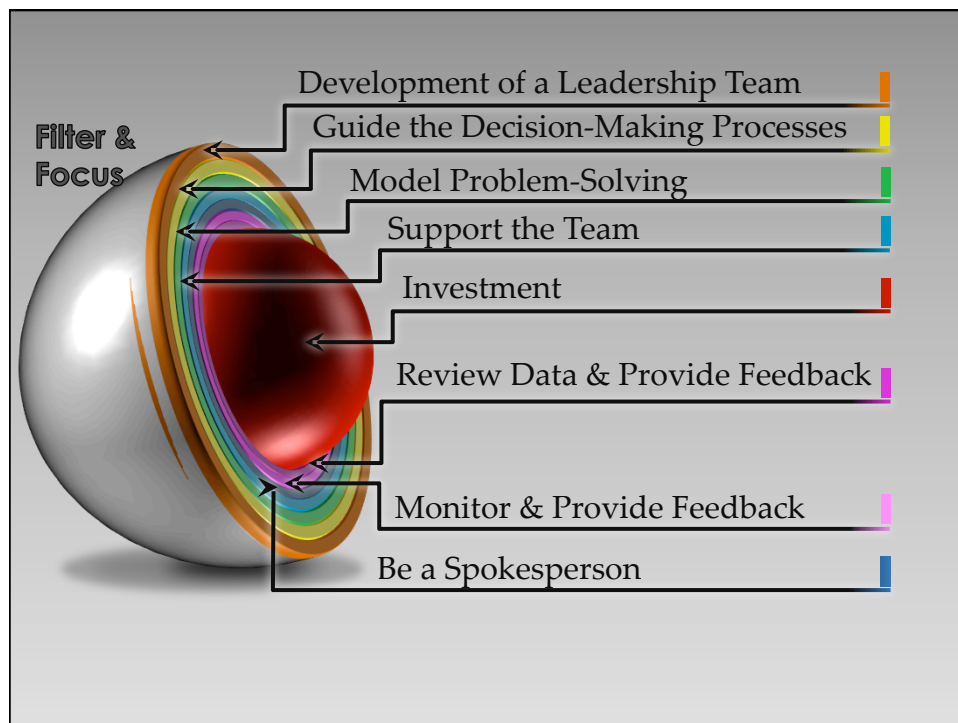


- 1. May Planning Meeting**  
Off-site Celebration Meeting  
Set Summer Meeting Dates
- 2. June Meeting**  
Review of data  
Taskforce groups created
- 3. Task Force Meetings**
- 4. Early July Meeting**  
Presentation of recommendations  
Team provided feedback  
Staff feedback solicited
- 5. Late July Meeting**  
Presentation updates  
Need for further staff input?
- 6. August Retreat**  
Final wrap-up  
Planning for staff PD



## Planning for Peer Observations/ Peer Coaching

- Planning time for Tier 1 coach
- Release time for teachers (MPER Grant)
- Ongoing training from consultants on the observation process
- Teachers doing the observations



## Questions



## Let's Chat...

- What barriers have you faced / are you facing?